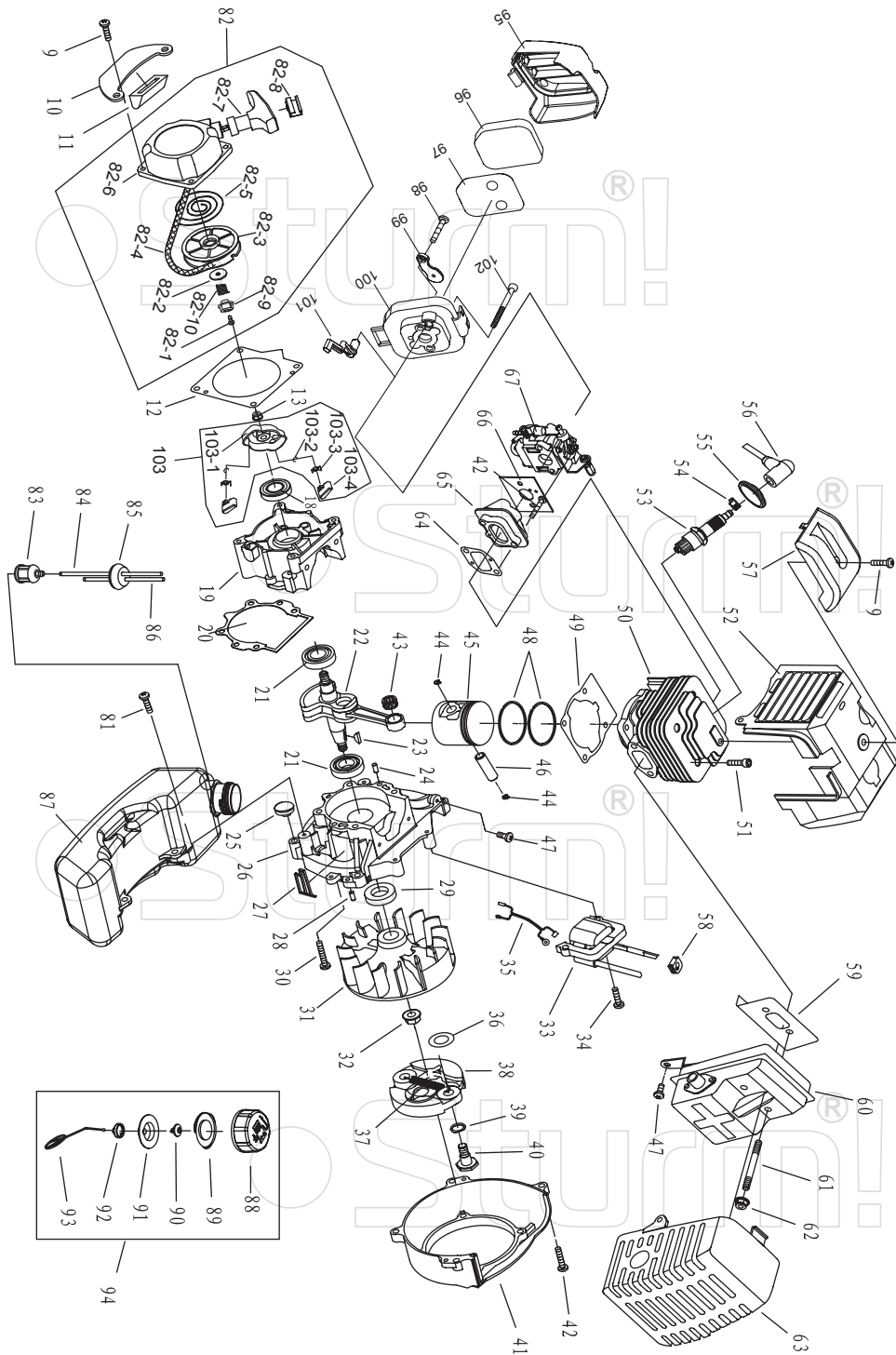


BT8952D

No.	DESCRIPTION	No.	DESCRIPTION	No.	DESCRIPTION
1	GEAR CASE ASS'Y	31	HARNES CLAMP	61	SPRING
2	STOP RING 26	32	CLAMP	62	LOCK PIN
3	STOP RING 10	33	SCREW M5X20	63	HAND GRIP
4	BEARING 600-2RS/P5	34	NUT M5	64	SPRING
5	PINION	35	CLUTCH COMP.	65	BOX,RIGHT
6	STEEL CAP	36	CLUTCH DRUM COMP.	66	SCREW ST2.9X18
7	SCREW M6X20	37	STOP RING 35	67	SCREW M5X30
8	WASHER 6	38	BEARING 6202-2RS/P5	68	CABLE COMP.
9	SCREW M5X12	39	STOP RING 15	69	TUBE
10	BOLT M6X12	40	LINKER	70	STOP BUTTON COMP.
11	WASHER 6	41	RUBBER COVER	71	HAND GRIP
12	GEAR CASE	42	SCREW M5X25	72	SPRING
13	SAFELY GUARD	43	WASHER 5	73	BOX,LEFT
14	BEARING 6000/P5	44	WASHER 5	74	BRACKET
15	GEAR	45	CLAMP B	75	BOLT M5X30
16	GEAR SHAFT	46	CLAMP A	76	SAFELY GUARD
17	BEARING 6002-2RS/P5	47	WIRE CLAMP BAND	77	SCREW M5X16
18	STOP RING 32	48	HARNES ASS'Y	78	GUARD COMP.
19	HOLDER A	49	SCREW M6X25	79	SCREW ST4.2X16
20	HOLDER B	50	CAP,LOWER	80	GUARD
21	WASHER 10	51	RUBBER WASHER	81	BLADE
22	LEFT NUT	52	BRACKET	82	NYLON CUTTER HEAD
23	PIN 2X16	53	HANDLE	83	CASE
24	BLADE	54	GRIP LEFT	84	LEFT NUT A
25	PIPE COMP.	55	CAP,UPPER	85	WASHER
26	RUBBER COVER	56	BOLT M5X25	86	SPRING
27	OIL-BEARING	57	HANDLE	87	CORD
28	DRIVE SHAFT	58	LEVER ASS'Y	88	CORD HOLDER
29	PIPE	59	SCREW ST2.9X9.5	89	COVER
30	HOLDER ASS'Y	60	BUTTON	90	BLADE

ST20121030-02

Sturm!



Engine for BT8952D

No.	DESCRIPTION	NO.	DESCRIPTION	NO.	DESCRIPTION
9	SCREW M5X20	44	RING	82-7	START HANDLE
10	STAND	45	PISTON	82-8	RING
11	RUBBER COVER	46	PISTON PIN	82-9	START RATCHET
12	GASKET	47	BOLT M5X12	82-10	EASY START COIL-SPRING
13	NUT M8	48	PISTON RING	83	CLEANER COVER
18	OIL-SEAL	49	GASKET	84	FUEL PIPE
19	CRANK CASE	50	CYLINDER	85	PLUG
20	GASKET	51	SCREW M5X20	86	FUEL PIPE
21	BEARING 6202/P5	52	GUIDE COVER ASS'Y	87	FUEL TANK
22	CRANK SHAFT	53	SPARK PLUG	88	FUEL TANK LID
23	KEY 3X13	54	SPRING	89	GASKET
24	PIN B5X12	55	PLUG CAP	90	INLET
25	RUBBER WASHER	56	CAP	91	INSIDE COVER
26	CRANK CASE	57	COVER	92	LID
27	GUIDE COVER	58	PLUG	93	CHAIN
28	PIN B4X10	59	GASKET	94	FUEL TANK LID COMP
29	OIL-SEAL	60	MUFFLER	95	CLEANER OUTSIDE COVER
30	SCREW M5X30	61	BOLT	96	CLEANER ELEMENT
31	FLY WHEEL	62	NUT M6	97	DEFENDER FOR CLEANER ELEMENT
32	NUT M8	63	MUFFLER COVER	98	SCREW ST4.2X12-F-H
33	STATOR	64	ADMITTING PIPE	99	CHOKE
34	BOLT M5X20	65	ADMITTING PIPE	100	CLEANER INSIDE COVER
35	CORD COMP	66	GASKET	101	CHOKE HANDLE
36	WASHER B	67	CARBURETOR	102	SCREW M5X55
37	SPRING	82	STARTER	103	STARTER PULLEY ASS'Y
38	EXPANDER	82-1	SCREW M5X12-9.8-DZ	103-1	STARTER REEL
39	WASHER	82-2	WASHER	103-2	STOP RING
40	SCREW PIN	82-3	START ROPE REEL	103-3	STARTER PAWL SPRING
41	FAN COVER	82-4	ROPE	103-4	STARTER PAWL
42	BOLT M5X25	82-5	RECOIL SPRING		
43	BEARING	82-6	START COVER ASS'Y		

ST20121030-02

Sturm!