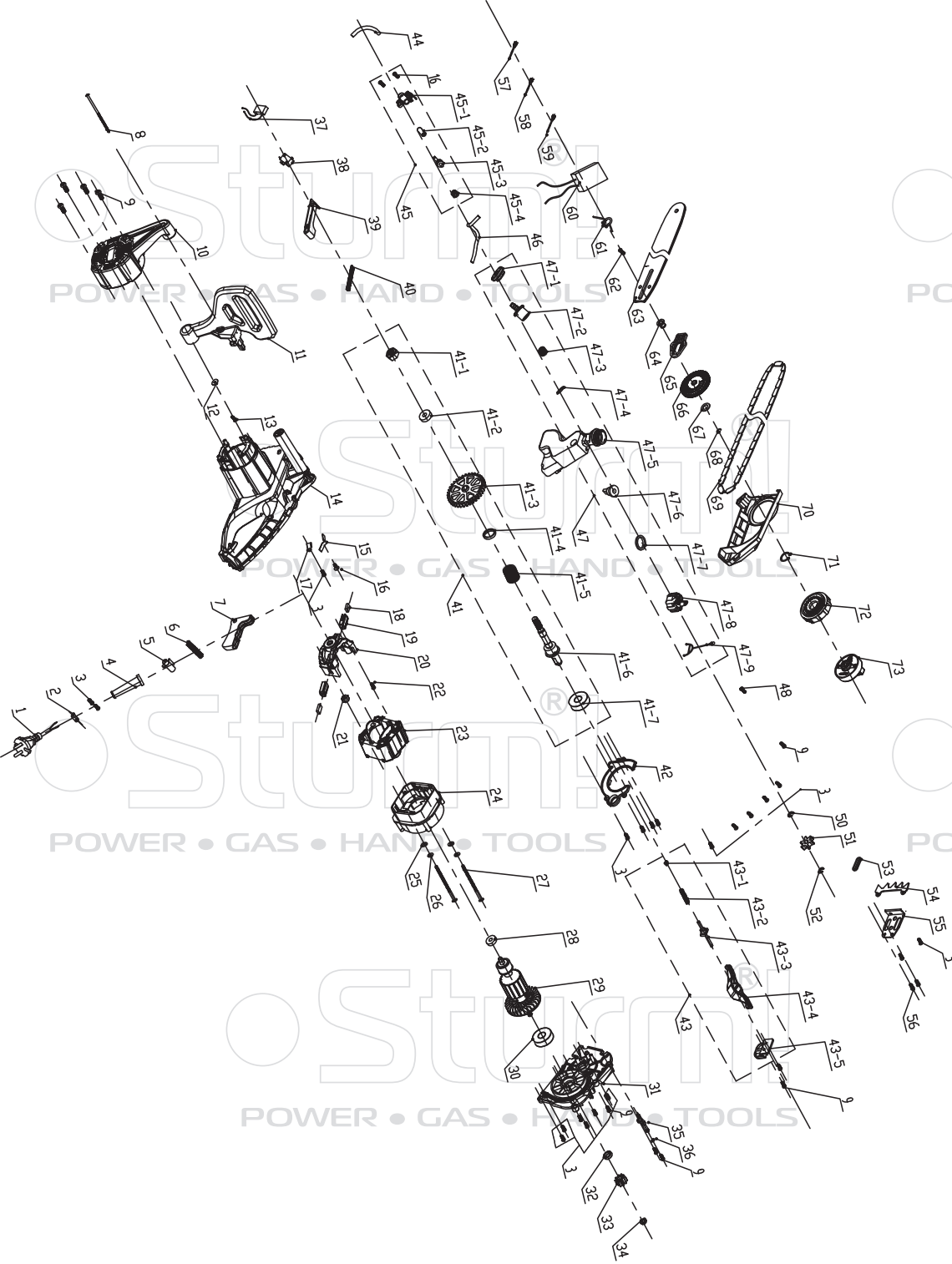


CC9924S



NO.	DESCRIPTION	NO.	DESCRIPTION
1	POWER CORD	43	BRAKE ROD ASSM.
2	CORD CLAMP	43-1	WASHER
3	SCREW ST4X12	43-2	BRAKE ROD SPRING
4	CORD SLEEVE	43-3	BRAKE ROD
5	BUTTON	43-4	TRIGGER
6	SPRING	43-5	BRAKE ROD SUPPORT
7	TRIGGER	44	INNER OIL TUBE
8	SCREW ST5X150	45	PUMP ASSM.
9	SCREW ST4X16	45-1	PUMP BODY
10	COVER	45-2	PISTON SLEEVE
11	HAND GUARD	45-3	WORM POLE
12	WASHER	45-4	WORM
13	SCREW ST5X16	46	OUT OIL TUBE
14	HOUSING	47	TANK ASSM.
15	SPRING PIECE	47-1	SEAL RING
16	SCREW ST3X8	47-2	TANK JOINT
17	WASHER	47-3	SPONGE
18	CARBON BRUSH	47-4	ONE-WAY VALVE
19	CARBON BRUSH HOLDER	47-5	OIL TANK
20	MOTOR SURPORT	47-6	ONE-WAY VALVE
21	NUT M4	47-7	SEAL RING
22	SCREW ST3X8	47-8	TANK COVER
23	STATOR	47-9	HOOK
24	FAN GUARD	48	SCREWM5X20
25	WASHER	50	SPRING
26	SPRING WASHER	51	WHEEL
27	SCREW M4X56	52	E CIRCLP
28	BEARING 608Z	53	SEAL RING
29	ROTOR	54	WOOD TEECH
30	BEARING 6000Z	55	PRESS PLATE
31	SURPORT	56	SCREWST4X10
32	SHAFT SLEEVE	57	LINE500
33	GEAR	58	LINE330
34	SCREW M8	59	LINE240
35	OIL POLE	60	SOFT START
36	O RING	61	INDUCTANCE
37	CAPACITY	62	SCREW M5
38	SWITCH	63	CHAIN BAR
39	PUSH POLE	64	JOINT SLEEVE
40	PUSH SPRING	65	PUSH PLATE
41	GEARS	66	WHEEL
41-1	NUT M8	67	WASHER
41-2	BEARING 608Z	68	CIRCLP
41-3	BIG GEAR	69	CHAIN SAW
41-4	SHAFT SLEEVE	70	CHAIN SAW COVER
41-5	TWISTED SPRING	71	CIRCLP
41-6	SHAFT	72	ADJUST BUTTON
41-7	BEARING 6000Z	73	PRESS BUTTON
42	DUST COVER		