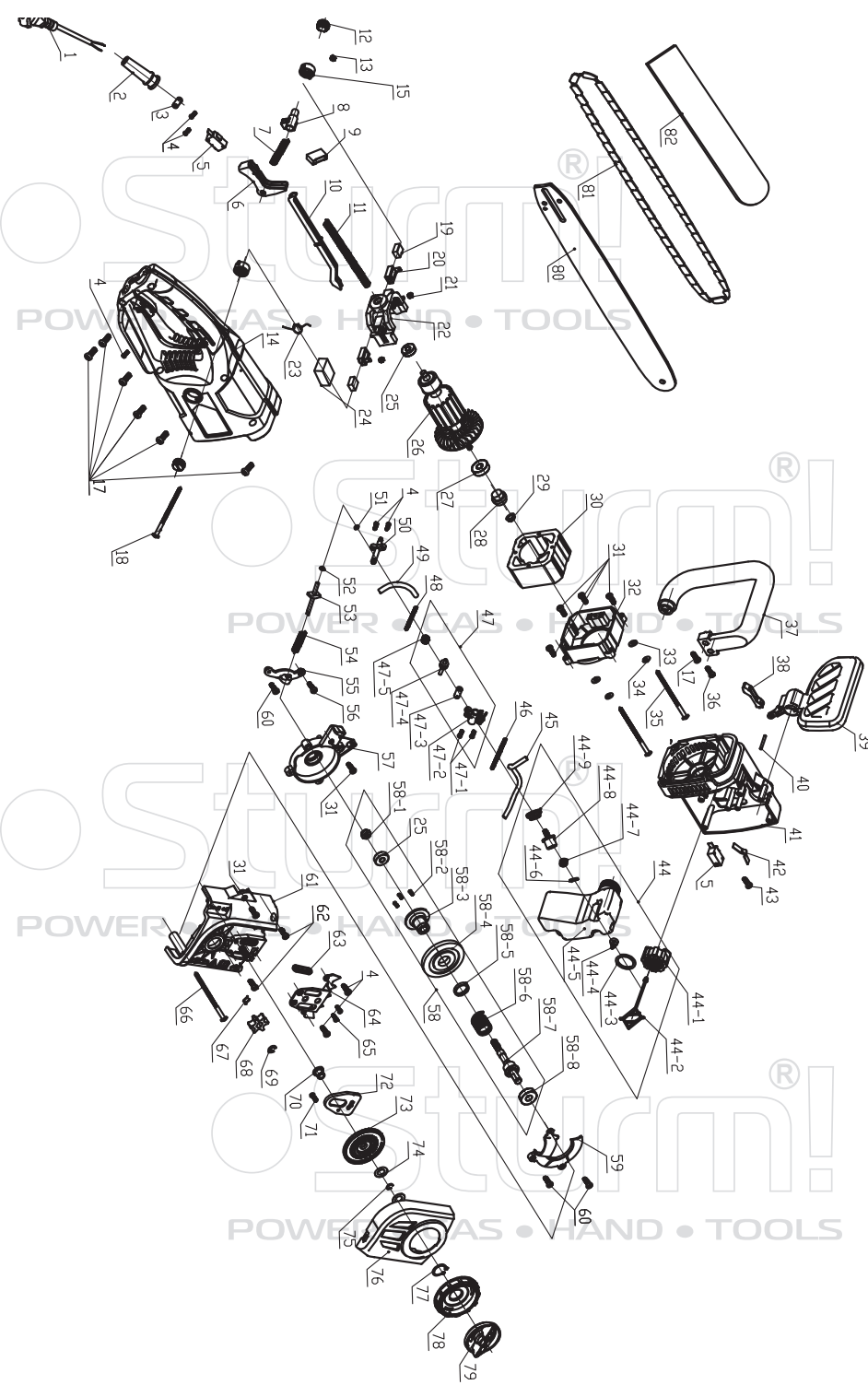


# CC9928S



NO.	DESCRIPTION	NO.	DESCRIPTION
1	CABLE	45	TUBING
2	CABLE PROTECTOR	46	SPRING
3	CABLE ANCHORAGE	47	OIL PUMP COMPONENTS
4	SCREW ST4*12	47-1	SCREW ST3*8
5	SWITCH	47-2	PUMP BODY
6	SWITCH TRIGGER	47-3	PISTON BUSH
7	SPRING	47-4	TURBINE ROD
8	SAFETY LOCKING BUTTON	47-5	TURBINE TOOTH
9	CAPACITOR	48	SPRING
10	PUSH ROD	49	TUBING
11	SPRING	50	OUT OF THE NOZZLE
12	BRUSH CAP	51	O-RING
13	NUT M4	52	WASHER Φ4
14	HANDLE	53	BRAKE LEVER
15	CARBON BRUSH HOLDER	54	SPRING
17	SCREW ST5*16	55	BRAKE FIXING PLATE
18	SCREW M4*70	56	SCREW ST4*22
19	CARBON BRUSH	57	SUPPORT PLATE
20	BRUSH HOLDER	58	GEAR ASSEMBLY
21	NUT M4	58-1	NUT M8
22	MOTOR BACK BRACKET	58-2	SCREW M4*10
23	INDUCTOR	58-3	GEAR MOLD INSERT
24	SOFT START	58-4	BIG BEVEL GEAR
25	BEARING 608RS	58-5	SHAFT SLEEVE
26	ROTOR	58-6	BRAKE TORSION SPRING
27	BEARING 6000RS	58-7	OUTPUT SHAFT
28	SMALL BEVEL GEAR	58-8	BEARING 608RS
29	NUT M6	59	DUST COVER
30	STATOR	60	SCREW ST4*20
31	SCREW M4*16	61	GEAR BOX COVER
32	MOTOR FRONT BRACKET	62	SCREW ST5*30
33	WASHER Φ4	63	RUBBER RING
34	SPRING WASHER Φ4	64	BUMPER SPIKE
35	NON-STANDARD SCREW M4*65	65	SCREW ST4*10
36	SCREW M5*40	66	SCREW ST5*70
37	AUXILIARY HANDLE	67	SPRING
38	CONNECTING ROD	68	CHAIN WHEEL
39	PROTECTIVE PLATE	69	CIRCLIP Φ7
40	PIN Φ3X12	70	SHAFT SLEEVE
41	GEAR BOX	71	GUIDE BAR SCREW
42	LEAF SPRING	72	KNOCKOUT PLATE
43	SCREW ST3*8	73	CIRCLING ROUND WHEEL
44	OIL TANK ASSEMBLY	74	WASHER Φ11XΦ20X1
44-1	OIL TANK COVER	75	CIRCLIP
44-2	POTHOOK	76	CHAIN COVER
44-3	O-RING	77	CIRCLIP Φ19
44-4	CHECK VALVE	78	TENSIONING KNOB
44-5	OIL TANK	79	COMPRESS KNOB
44-6	PLUG	80	GUIDE BAR
44-7	SPONGE	81	CHAIN
44-8	FUEL TANK JOINT	82	SCABBARD
44-9	SEALING RING		