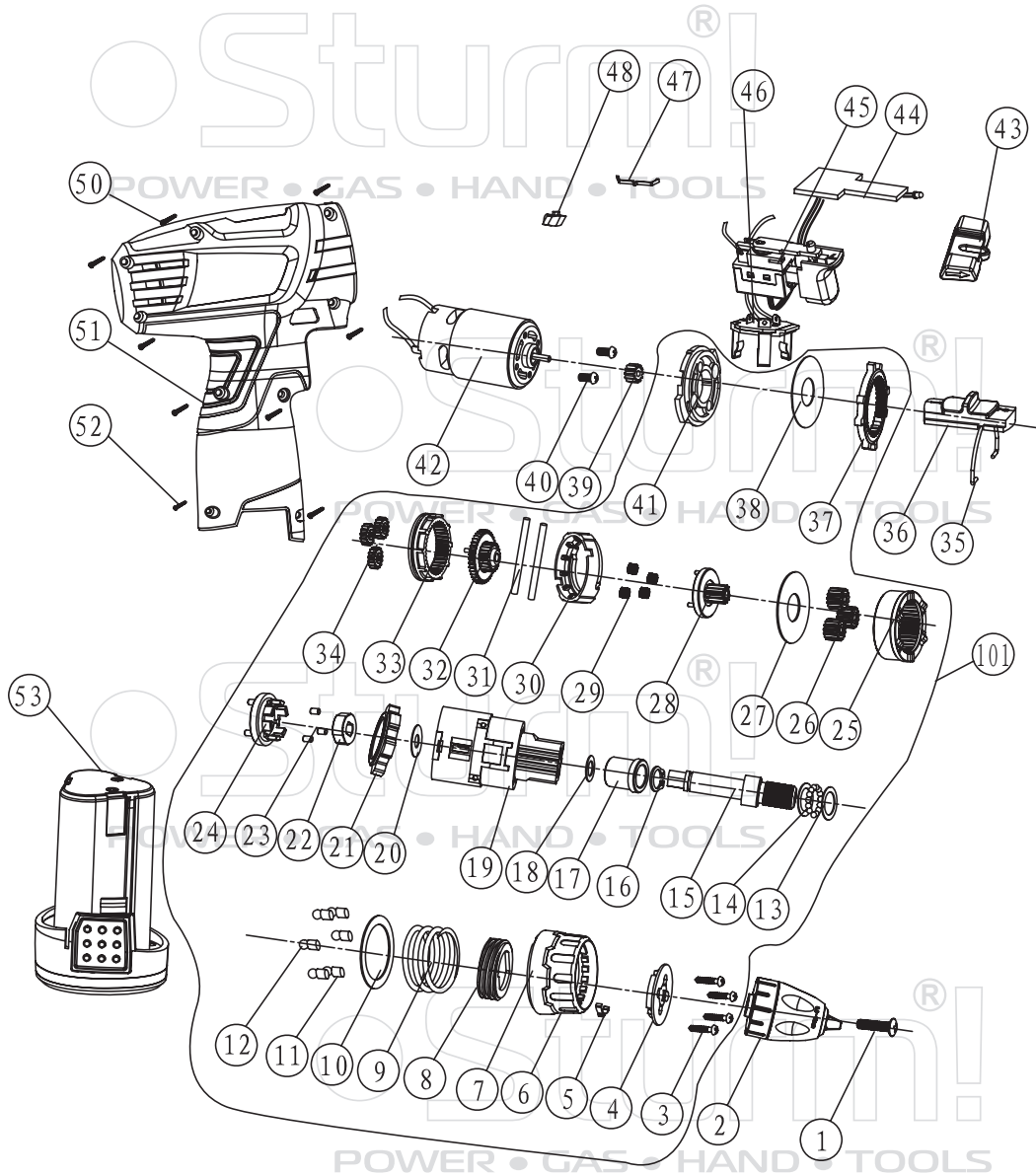


# CD32121L



NO.	DESCRIPTION	NO.	DESCRIPTION
1	CHUCK SCREW	28	PLANETARY CARRIER
2	CHUCK	29	PLANETARY GEAR
3	TAPPING SCREW	30	LIMIT POSITION RING
4	COMPRESSING PLATE	31	NEEDLE ROLLER
5	POSITIONING SPRING	32	PLANETARY CARRIER
6	TORQUE SETTING RING	33	MOVEABLE RING GEAR
7	DECORATIVE RING	34	PLANETARY GEAR
8	INNER THREADED RING	35	2-SPEED LEVER
9	SPRING	36	SPEED SELECTOR
10	WASHER	37	FIXED RING GEAR
11	NEEDLE ROLLER	38	WASHER
12	BALL GROUP	39	MOTOR GEAR
13	WASHER	40	SCREW
14	SMALL BALL GROUP	41	MOTOR FLANGE
15	SHAFT	42	MOTOR ASSEMBLY
16	FIXING RING	43	FWD/REV LEVER
17	SHAFT COAT	44	PCB
18	WASHER	45	SWITCH ASSEMBLY
19	GEAR BOX	46	CONTACT PLATE
20	WASHER	47	LEVER
21	SHAFT LOCK RING	48	LENS
22	DRIVING BLOCK	50	TAPPING SCREW
23	NEEDLE ROLLER	51	HOUSING ASSEMBLY
24	PLANETARY CARRIER	52	TAPPING SCREW
25	GEARING RING	53	BATTERY PACK
26	PLANETARY GEAR	101	GEAR BOX ASSEMBLY
27	WASHER		

ST20130729

