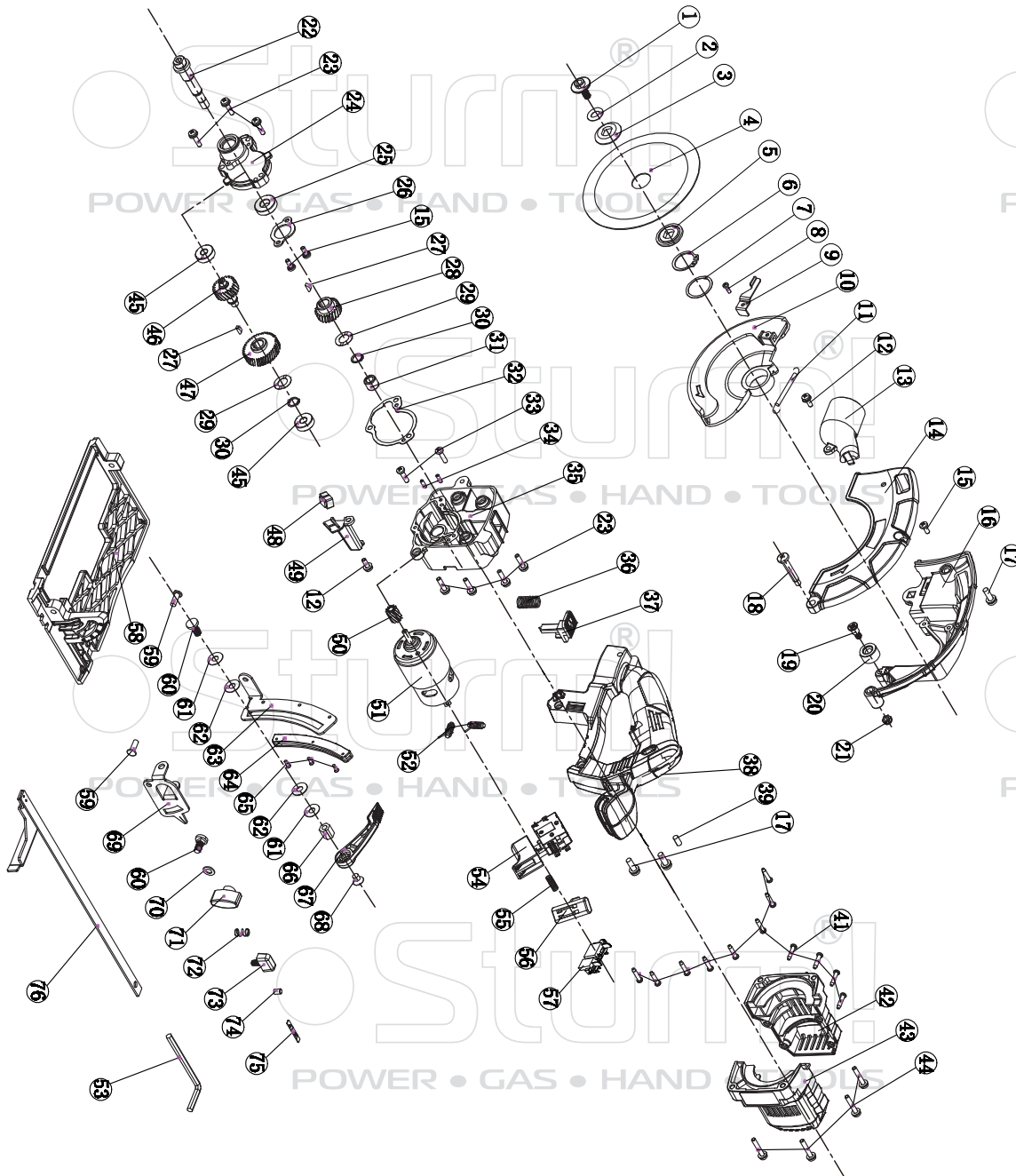


# CS50125CL<sup>®</sup>



NO.	DESCRIPTION	NO.	DESCRIPTION
1	BOLT M6*16	39	RUBBER LOCATING RING
2	BOLT WASHER Ø6.5*Ø18*1.5	41	SCREW ST3.5*16
3	OUTER FLANGE	42	RIGHT HOUSING
4	SAW BLADE	43	LEFT HOUSING
5	INNER FLANGE	44	SCREW M4*25
6	CIRCLIP FOR AXES Ø22	45	BALL BEARING 607Z
7	CLAMPING PLATE OF MOVABLE GUARD	46	GEAR SPINDLE
8	SCREW ST3*10	47	REDUCTION BIG GEAR
9	MOVABLE GUARD WRENCH	48	LED LIGHT
10	MOVABLE GUARD	49	CORD CLAMPING PLATE
11	MOVABLE GUARD SPRING	50	MOTOR GEAR
12	SCREW M4*12	51	MOTOR
13	TUBE	52	BAR INDUCTOR
14	OUTER FIXED GUARD	53	ALLEN KEY 5#
15	SCREW M4*10	54	SWITCH
16	INNER FIXED GUARD	55	SPRING FOR PUSH ROD
17	SCREW M6*16	56	UNLOCK-OFF BUTTON
18	UPPER GUARD LOCKING BOLT M5*38.7	57	SUPPORT
19	LOCKING BOLT FOR LOCATING LOCK RING M5*18	58	BASE PLATE
20	RETAINER RING OF MOVABLE GUARD	59	RIVET Ø5*14
21	LOCK NUT M5*8	60	SQUARE NECK BOLT M6*14
22	OUTPUT SPINDLE	61	FLAT WASHER
23	SCREW M4*18	62	FLAT WASHER
24	COVER FOR GEAR BOX	63	DEPTH RULER
25	BEARING 6900	64	DEPTH SCALE INDICATOR
26	BEARING FLANGE	65	SCREW ST2.5*8
27	WOODRUFF KEY 3*3.7*10	66	DEPTH LOCKING HEXAGON NUT M6*12
28	BIG GEAR	67	DEPTH LOCKING ROD
29	WAVE WASHER	68	SCREW M6*8
30	CIRCLIP FOR AXES Ø10	69	GEMEL FOR BASEPLATE ANGLE RULER
31	NEEDLE BEARINGHK0810	70	FLAT WASHER
32	OIL BAFFLE PAD	71	ADJUSTION KNOB
33	SCREW M4*16	72	SELF-LOCK SPRING
34	LOCATING PIN	73	FIXED KNOB FOR STAFF GAUGE
35	GEAR BOX BODY	74	ALLEN SCREW M5*5
36	SPRING OF SPINDLE LOCK	75	BASEPLATE SCALE LABEL
37	SPINDLE LOCK BUTTON	76	GUIDE RULER
38	LEFT HANDLE		

UK-ST20210219