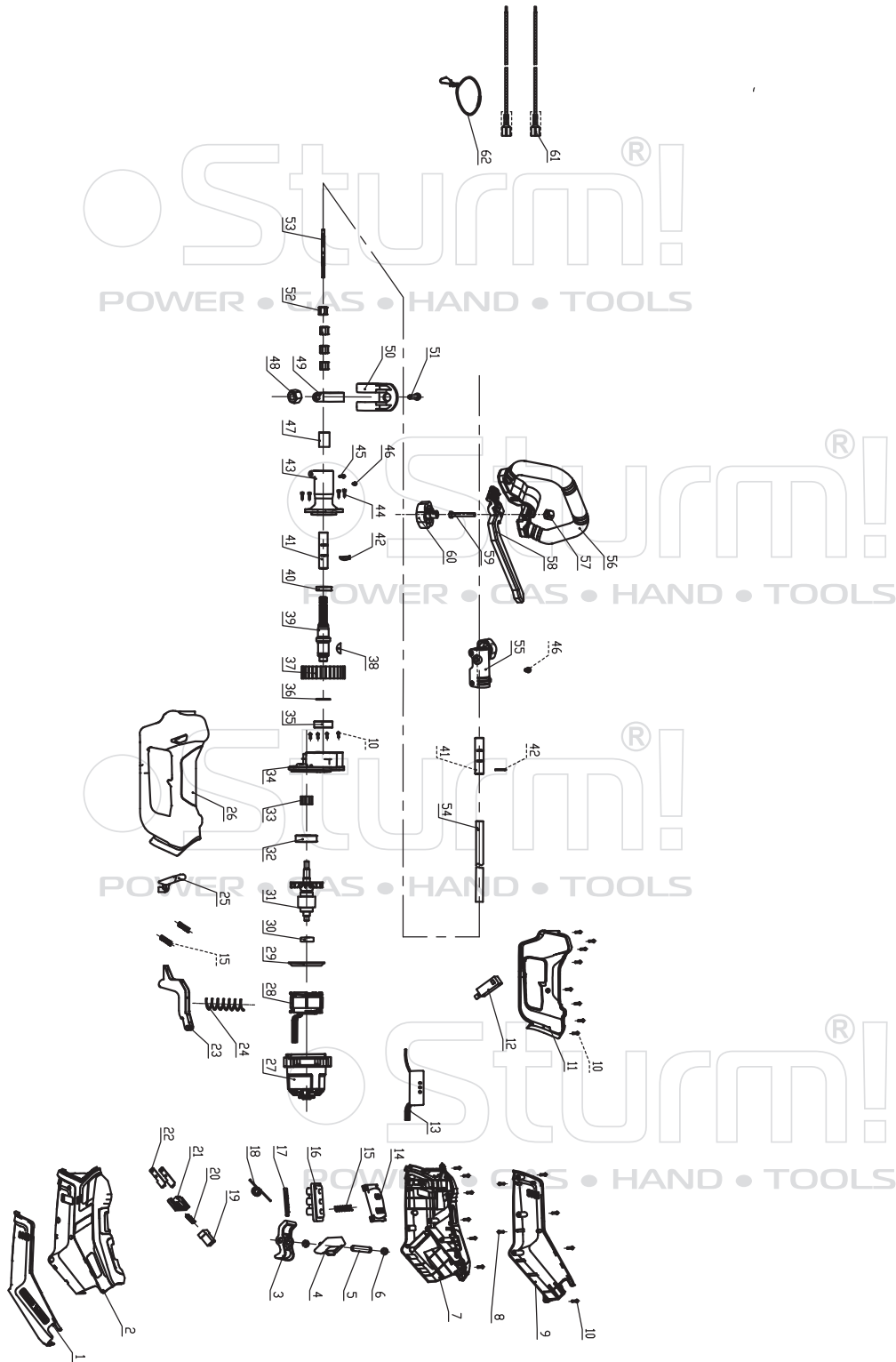
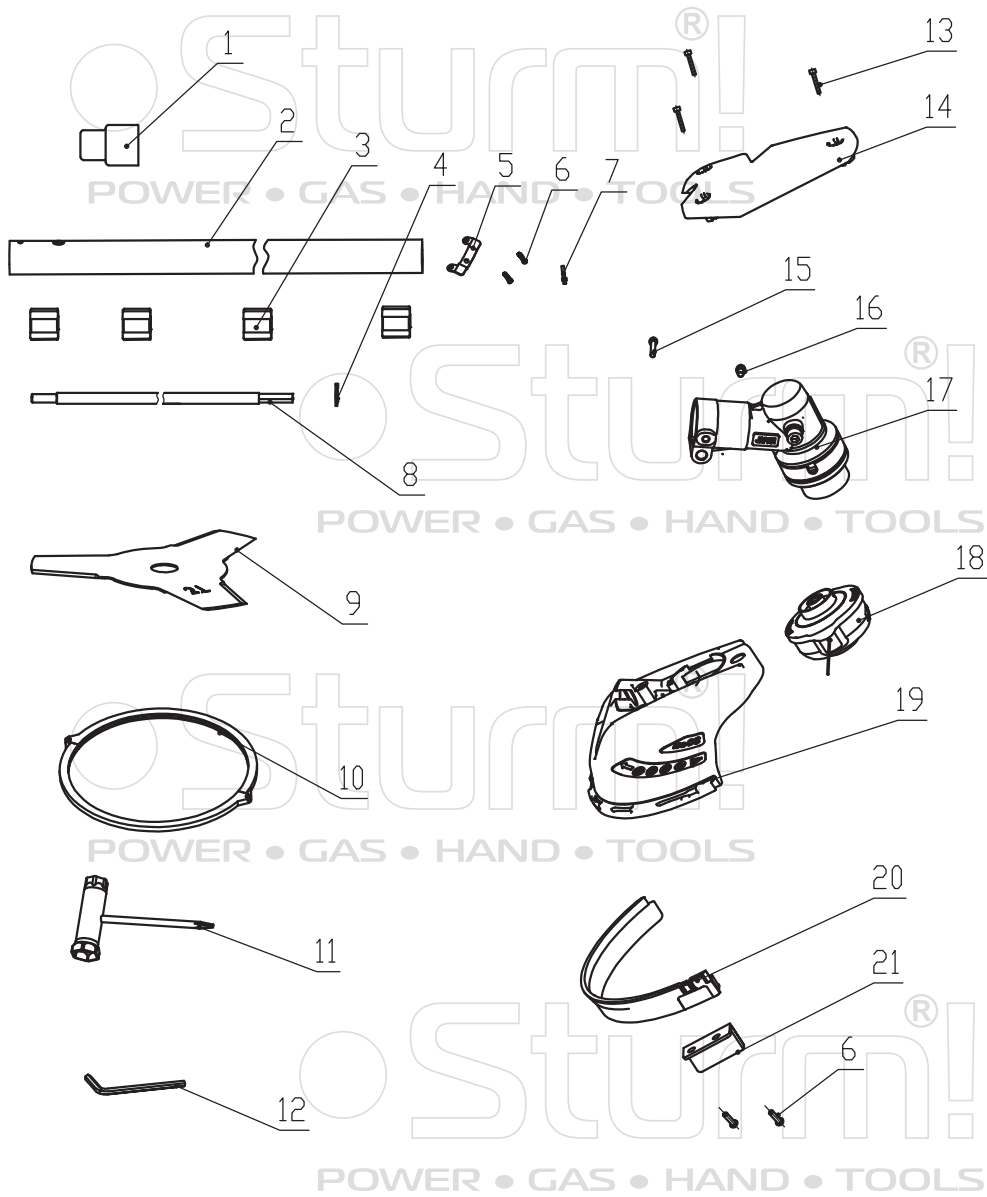


# GT3530CL



NO.	DESCRIPTION	NO.	DESCRIPTION
1	left decoration cover	34	gear box
2	left housing	35	bearing 697
3	driving konb	36	circlip 10
4	battery fixing block	37	big gear
5	rotated axle	38	key
6	retainer ring	39	output shaft
7	right housing	40	bearing 6000
8	screw ST4x14	41	connecting sleeve
9	right decoration cover	42	circlip
10	screw 4x16	43	nut M5
11	right handle	44	screw ST*16
12	switch	45	oil bearing
13	PCB board	46	circlip
14	battery button	47	rubber cover
15	pushing knob spring	48	nut M5
16	indicator board	49	sponge
17	battery volume indicator board	50	connecting sleeve
18	torsion spring	51	screw M5x20
19	covex piece	52	swinging ring
20	spring	53	front hard axle
21	terminal fixed block	54	front aluminum pipe
22	battery chip	55	aluminum connector
23	trigger	56	screw M5x16
24	trigger spring	57	nut M6
25	self lock button	58	lower handle
26	left handle	59	bolt M6x45
27	motor housing	60	knob
28	stator	61	connecting line
29	fan cover	62	belt
30	bearing 606		
31	armature		
32	bearing 608		
33	small gear		



## GT3530CL-1

NO.	DESCRIPTION
1	protect cover
2	back aluminum pipe
3	oil bearing
4	retainer ring
5	fixed plate
6	screw ST4x16
7	rivet 4x6
8	back hard axle
9	3T blade
10	blade protection cover
11	socket spanner
12	socket head wrench
13	screw M6x25
14	grass board top cover
15	screw M5x25
16	screw M5x12
17	gear box assy
18	spool
19	grass board
20	grass board seat
21	small blade