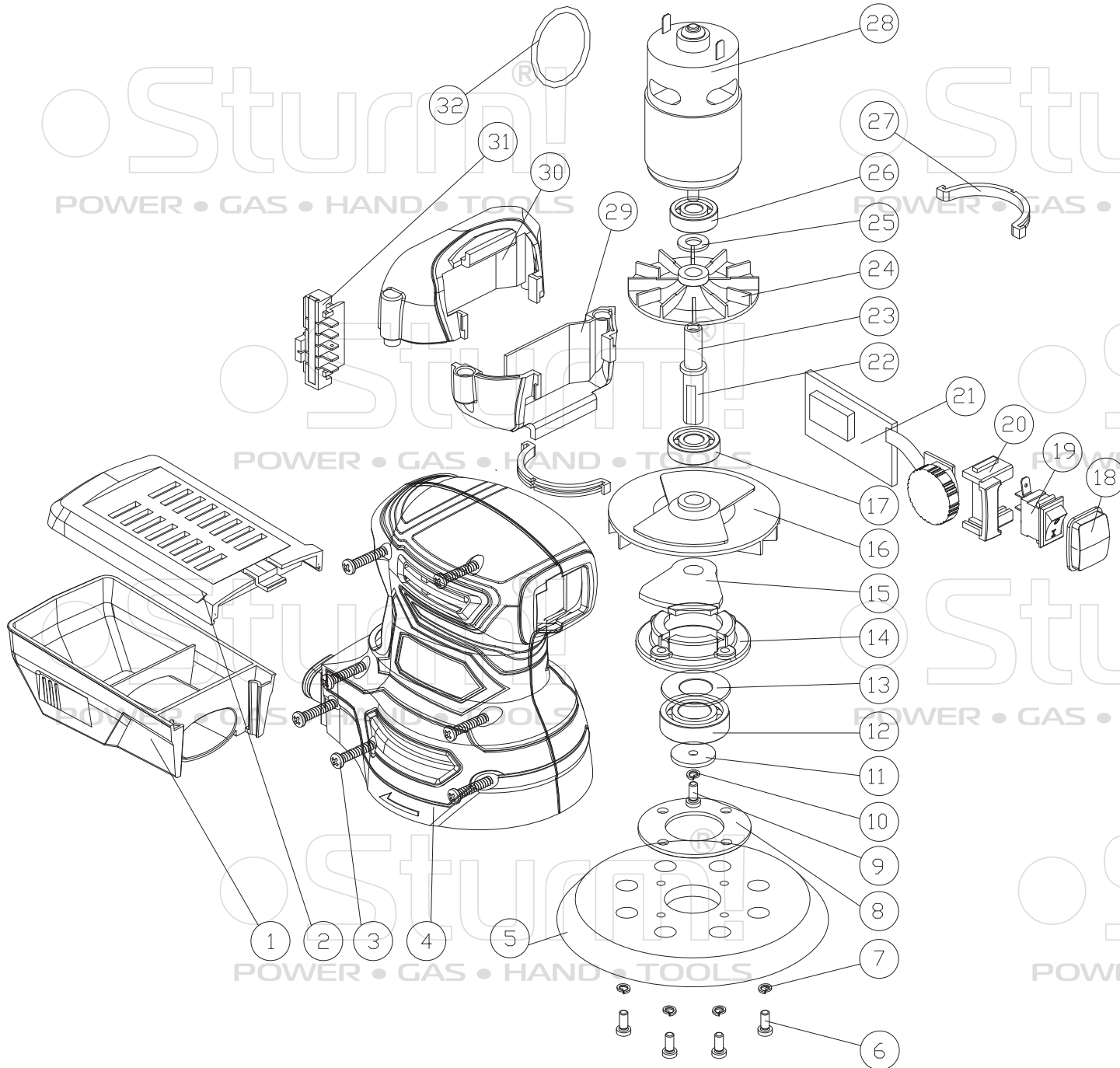


OS8120CL



NO.	DESCRIPTION
1	DUST BOX
2	DUST BOX COVER
3	TAPPING SCREW ST3.9X19
4	HOUSING
5	BASE
6	SCREW M5X12
7	SPRING WASHER M5
8	PRESS BOARD
9	SCREW M5X14
10	SPRING WASHER M5
11	WASHER T2
12	BEARING 6002RS
13	ANTI-DUST WASHER
14	BEARING BASE
15	BALANCE BLOCK
16	DUST FAN
17	BEARING 609RS
18	ANTI-DUST SWITCH COVER
19	SWITCH
20	SWITCH BOX
21	VARIABLE SPEED SWITCH
22	BALANCE BLOCK SHAFT
23	MOTOR SHAFT
24	COOL FAN
25	WASHER
26	BEARING 608RS
27	ANTI-VIBRATION PIECE
28	MOTOR
29	UPPER CONNECTION BLOCK
30	DOWN CONNECTION BLOCK
31	CONNECTION FOOT
32	O-RING

OS8120CL-EX-UKW210928OS