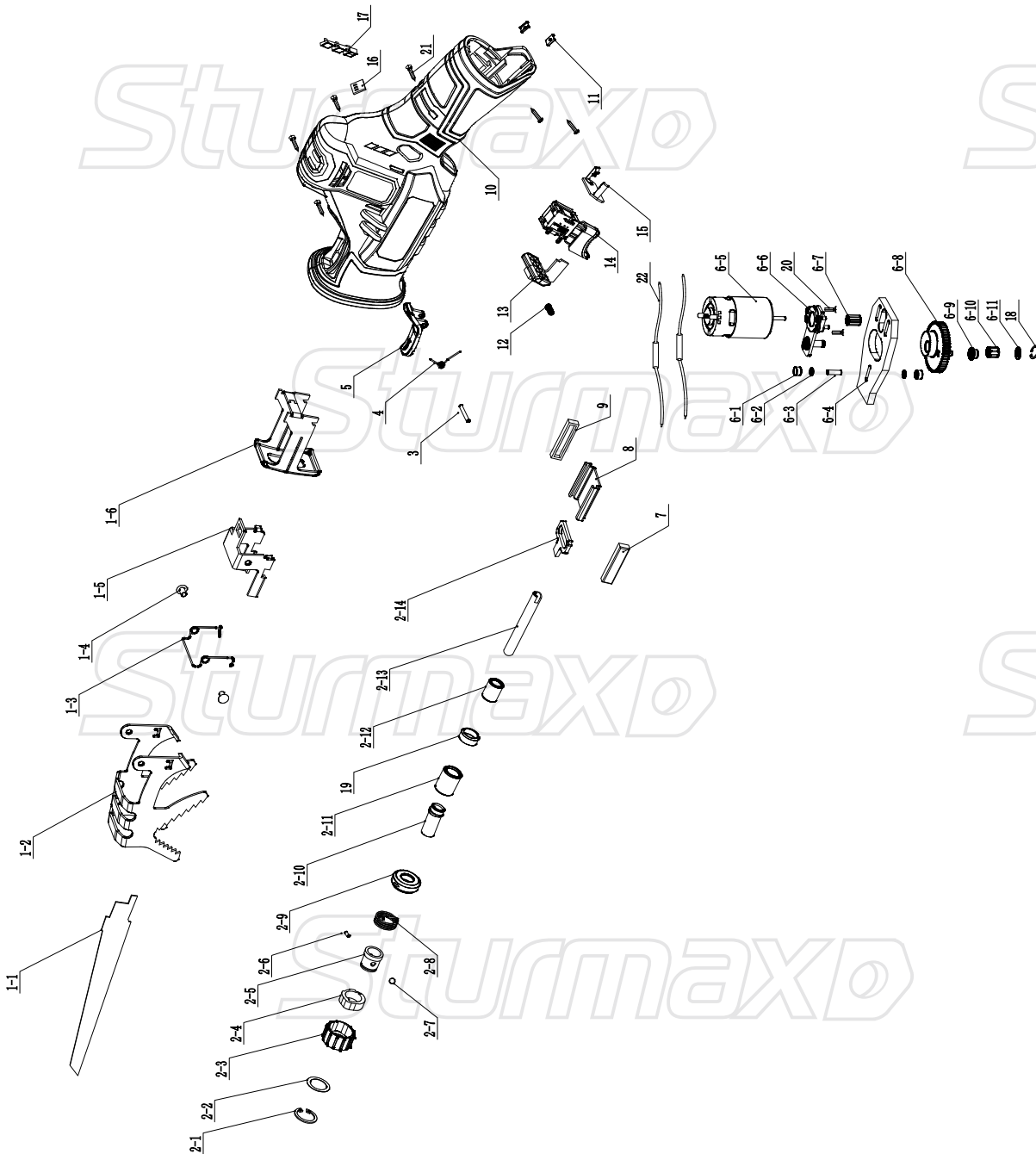


RSM8812CL



NO.	DESCRIPTION	NO.	DESCRIPTION
1-1	Blade	6-3	Pin \varnothing 4x12
1-2	Branch baffle	6-4	Balance part
1-3	Torsion spring	6-5	Motor
1-4	Rivet	6-6	Motor seat
1-5	Bracket	6-7	Motor gear
1-6	Bottom plate	6-8	Big gear
2-1	Circlip \varnothing 20.5	6-9	Roller
2-2	large washer	6-10	Needle HK0610
2-3	Lock sleeve	6-11	Shim
2-4	Quick fit sleeve	7	Guide fixing seat
2-5	Blade sleeve	8	Slide guide
2-6	Pin \varnothing 2.6x6.7	9	Guide seat
2-7	Steel ball \varnothing 5	10	Housing
2-8	Torsion spring	11	Clip
2-9	Indicator ring	12	Spring
2-10	Quick installation head	13	Unlock button
2-11	Shaft sleeve seat	14	Switch
2-12	Shaft sleeve	15	Connect board
2-13	Pipe	16	Battery display board
2-14	Reciprocating rod	17	Battery display cover
3	Pin \varnothing 3x25.8	18	Shaft circlip \varnothing 6
4	Torsion spring	19	Wool felt
5	Block button	20	Screw M3x10
6-1	Pin fixing seat	21	Screw ST3x14
6-2	Small gasket	22	Inductance

RSM8812CL-EX-UKW230707