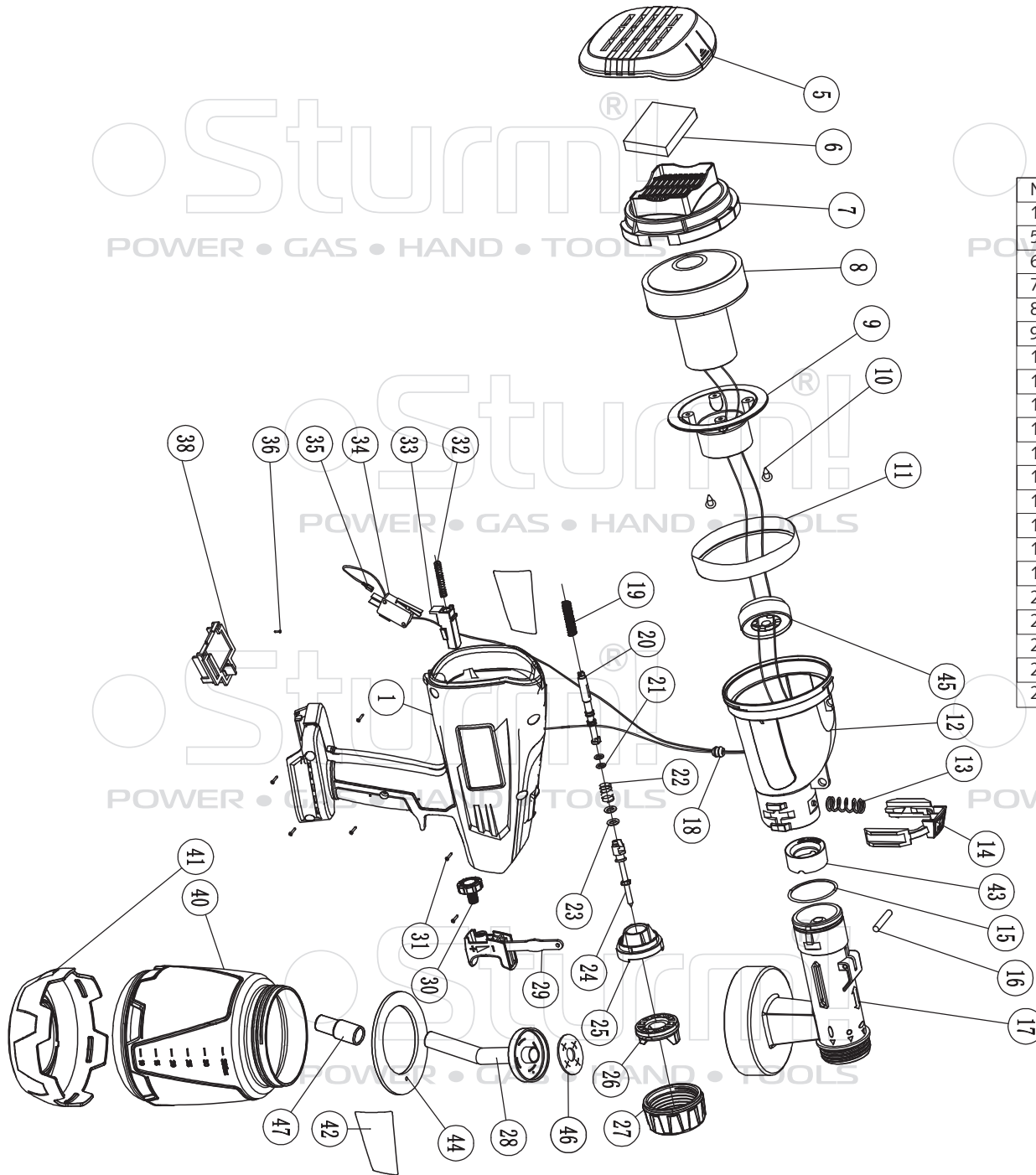


# SG9620CL



NO.	DESCRIPTION	NO.	DESCRIPTION
1	HOUSING	25	FIXED NOZZLE
5	HOUSING COVER	26	CHANGE NOZZLE
6	AIR FILTER	27	NOZZLE NUT
7	MOTOR BACK COVER	28	SUCKER
8	MOTOR	29	TRIGGER
9	MOTOR FRONT COVER	30	ADJUST NUT
10	SCREW ST3.0X10	31	SCREW ST3.5X15
11	MOTOR O-RING	32	SWITCH SPRING Ø0.6XØ5.5X35
12	MOTOR HOUSING	33	SWITCH POLE
13	DISASSEMBLY BUTTON SPRING Ø0.8XØ5.2X16	34	SWITCH
14	DISASSEMBLY BUTTON	35	CONNECTOR
15	GUN SEAT O-RING Ø2.2XØ38	36	SCREW ST2.6X6
16	PIN Ø3X25	38	BATTERY CONNECTOR
17	GUN SEAT	40	CONTAINER
18	INNER WIRE RING	41	CONTAINER COVER
19	VALVE SPRING Ø1.0XØ5.2X29	42	LABLE
20	VALVE NEEDLE TAIL	43	GUN RETAINING RING
21	VALVE NEEDLE TAIL O-RING Ø1.3XØ5	44	AIRPROOF WASHER 85XT3.0
22	VALVE TIP SPRING 0.5XØ8.2X15	45	MOTOR CHECK VALVE
23	VALVE TIP O-RING Ø2XØ5	46	SUCKER AIRPROOF WASHER 85XT3.0
24	VALVE TIP	47	SUCKER EXTENSION

UK-ST20211102