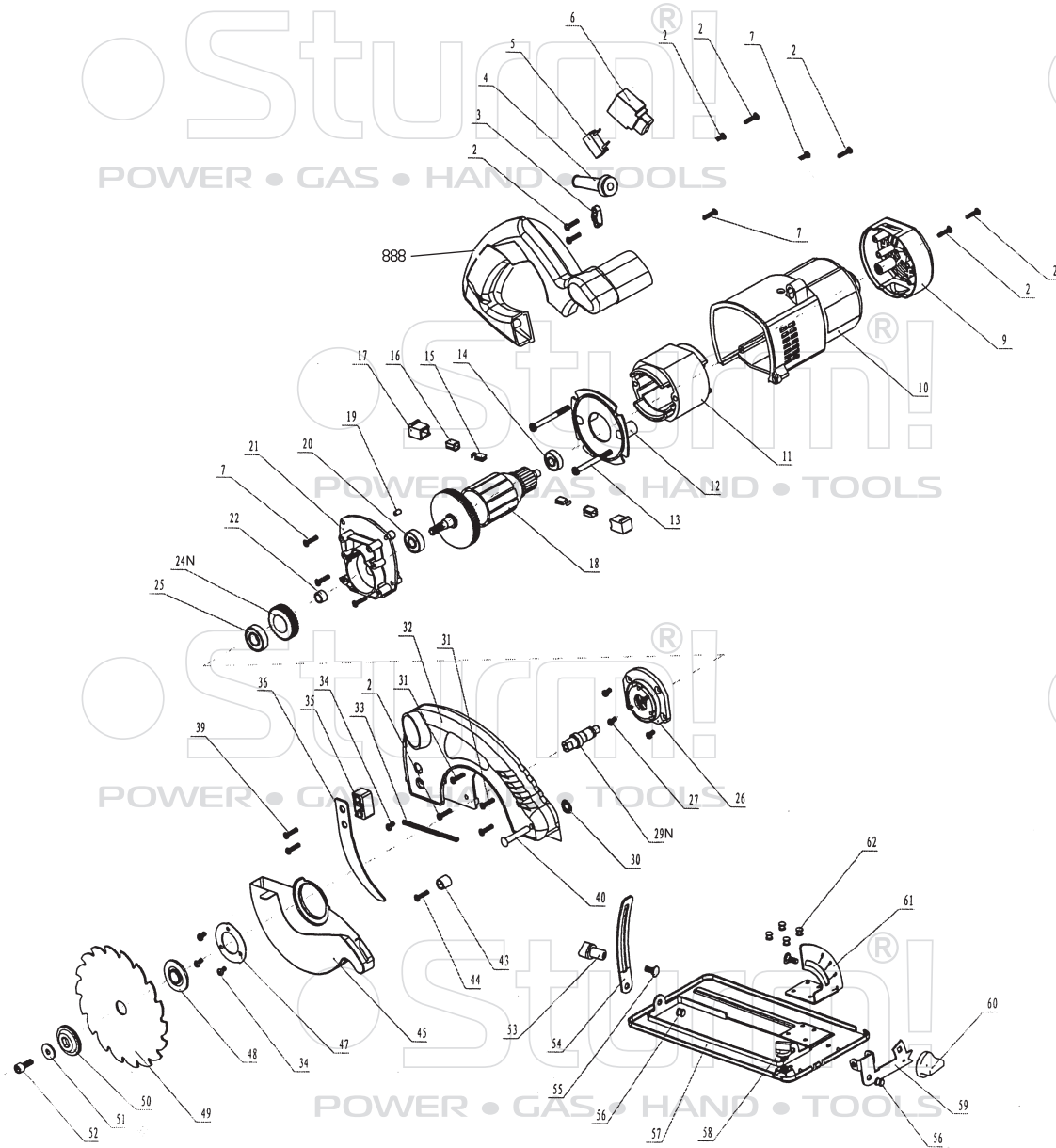


# CS50140



| NO. | DESCRIPTION          | NO. | DESCRIPTION                |
|-----|----------------------|-----|----------------------------|
| 2   | TAPPING SCREW ST4X16 | 32  | FIXED GUARD                |
| 3   | CORD CLAMP           | 33  | PULLING SPRING             |
| 4   | CORD SLEEVE          | 34  | SCREW M4X8                 |
| 5   | CAPACITOR            | 35  | RIVING KNIFE BASE          |
| 6   | SWITCH               | 36  | RIVING KNIFE               |
| 7   | TAPPING SCREW ST4X20 | 39  | SCREW M5X25                |
| 9   | REAR COVER           | 40  | CONNECTING PIN             |
| 10  | HOUSING              | 43  | RUBBER WASHER              |
| 11  | STATOR               | 44  | SCREW M5X14                |
| 12  | WIND GUARD           | 45  | MOVING GUARD               |
| 13  | TAPPING SCREW ST4X55 | 47  | PRESS BOARD FOR GUARD      |
| 14  | BEARING 608Z         | 48  | INNER FLANGE               |
| 15  | CARBON BRUSH         | 49  | BLADE                      |
| 16  | BRUSH COPPER SLEEVE  | 50  | OUTER FLANGE               |
| 17  | BRUSH HOLDER         | 51  | PLAIN WASHER               |
| 18  | ROTOR                | 52  | ALLEN SCREW M5X15          |
| 19  | RUBBER PIN           | 53  | KNOB FOR DEPTH ADJUSTMENT  |
| 20  | BEARING 629Z         | 54  | DEPTH STAND                |
| 21  | CENTER SUPPORT       | 55  | CROSS SCREW                |
| 22  | OILED BEARING        | 56  | RIVET Ø6                   |
| 24N | GEAR                 | 57  | BASE PLATE                 |
| 25  | BEARING 6001Z        | 58  | KNOB FOR FIXING RAIL GUIDE |
| 26  | BEARING BASE         | 59  | ANGLE ST AND(I)            |
| 27  | TAPPING SCREW ST4X12 | 60  | KNOB FOR ANGLE ADJUSTMENT  |
| 29N | SPINDLE              | 61  | ANGLE ST AND(II)           |
| 30  | WASHER               | 62  | RIVET Ø4                   |
| 31  | SCREW M4X12          | 888 | HANDLE ASSEMBLE            |

ST20120809-02