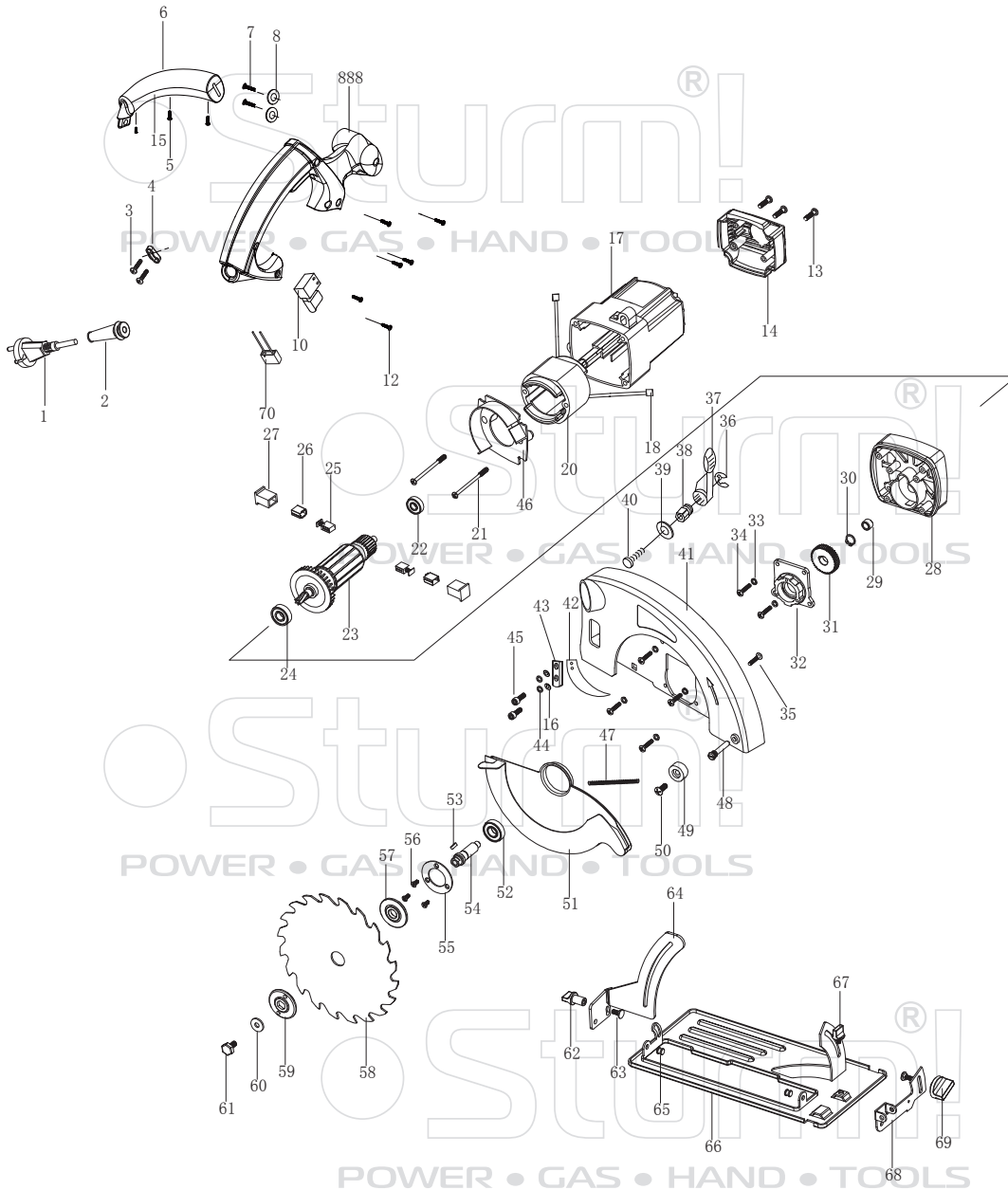


CS50186



NO.	DESCRIPTION	NO.	DESCRIPTION
1	CORD & PLUG	39	WASHER
2	CORD SLEEVE	40	LOCK SCREW
3	SCREW	41	FIXED GUARD
4	CORD CLAMP	42	RIVING KNIFE
5	SCREW	43	PRESS PLATE
6	UPPER AUXILIARY HANDLE	44	SPRING WASHER
7	SCREW	45	SCREW
8	WASHER	46	WIND GUIDE
10	SWITCH	47	SPRING
12	SCREW	48	SCREW
13	SCREW	49	RUBBER BLOCK
14	REAR COVER	50	SCREW
15	DOWN AUXILIARY HANDLE	51	MOVING GUARD
16	PLATE WASHER	52	BEARING 6001Z
17	HOUSING	53	KEY
18	INSERT PIECE	54	SPINDLE
20	STATOR	55	BEARING PRESS PLATE
21	SCREW	56	SCREW
22	BEARING 608Z	57	INNER FLANGE
23	ROTOR	58	BLADE
24	BEARING 6000Z	59	OUTER FLANGE
25	CARBON BRUSHER	60	WASHER
26	CARBON BRUSHER NEST	61	HEX SCREW
27	CARBON BRUSHER HOLDER	62	ANGLE LOCKING KNOB 1
28	GEAR BOX	63	SCREW
29	NEEDLE BEARING HK0808	64	DEPTH STAND
30	CRICLIP	65	RIVET
31	GEAR	66	BASE PALTE
32	GEAR BOX COVER	67	PARALLEL GUIDE KNOB
33	WASHER	68	ANGLE STAND
34	SCREW	69	ANGLE LOCKING KNOB 2
35	SCREW	70	CAPACITOR
36	CRICLIP	888	HANDLE ASSEMBLE
37	DEPTH LOCK BUTTON		
38	LOCK NUT		

ST20130508-02