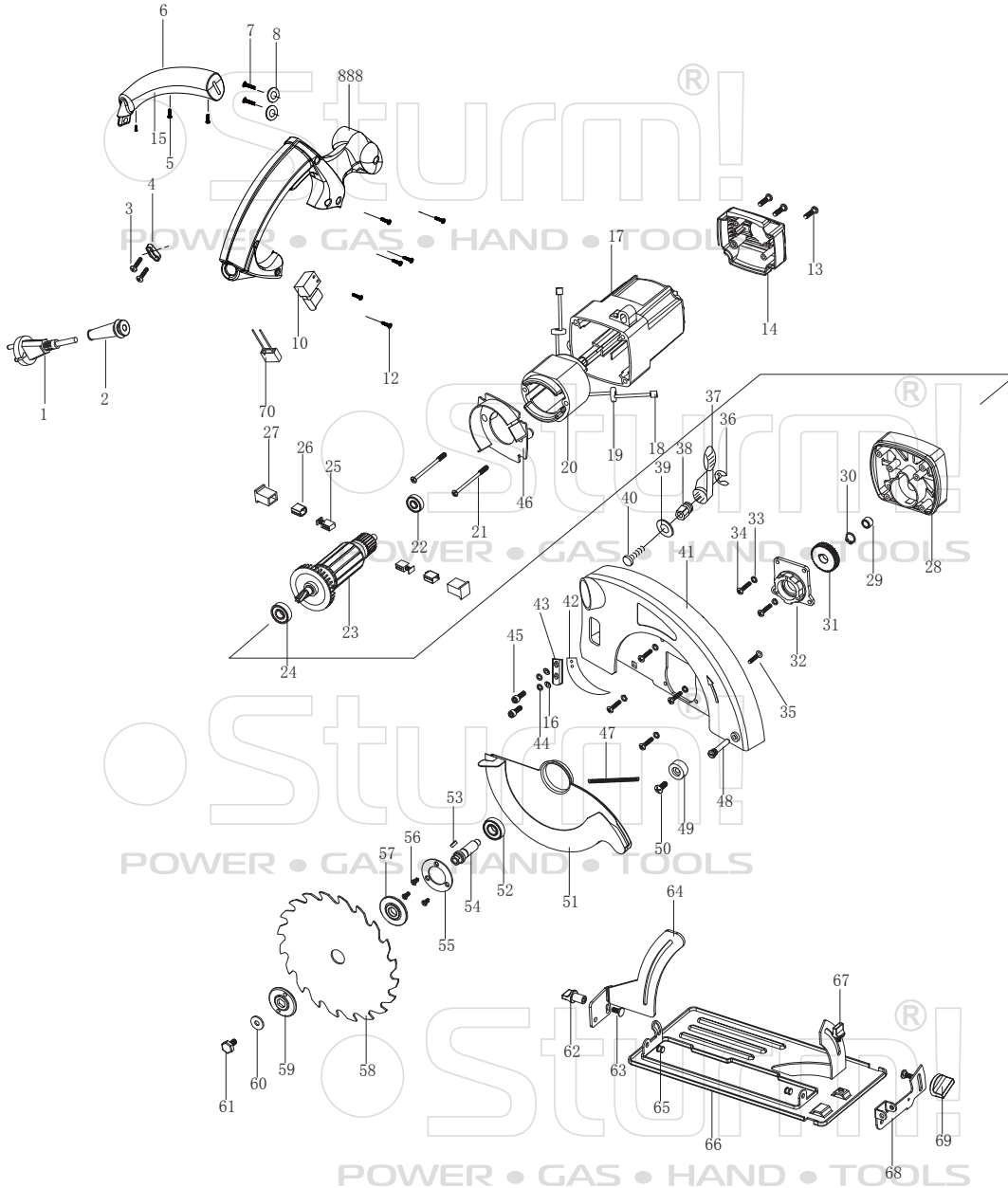


CS50186



NO.	DESCRIPTION	NO.	DESCRIPTION
1	CORD & PLUG	38	LOCK NUT
2	CORD SLEEVE	39	WASHER
3	SCREW	40	LOCK SCREW
4	CORD CLAMP	41	FIXED GUARD
5	SCREW	42	RIVING KNIFE
6	UPPER AUXILIARY HANDLE	43	PRESS PLATE
7	SCREW	44	SPRING WASHER
8	WASHER	45	SCREW
10	SWITCH	46	WIND GUIDE
12	SCREW	47	SPRING
13	SCREW	48	SCREW
14	REAR COVER	49	RUBBER BLOCK
15	DOWN AUXILIARY HANDLE	50	SCREW
16	PLATE WASHER	51	MOVING GUARD
17	HOUSING	52	BEARING 6001Z
18	INSERT PIECE	53	KEY
19	INDUCTOR	54	SPINDLE
20	STATOR	55	BEARING PRESS PLATE
21	SCREW	56	SCREW
22	BEARING 608Z	57	INNER FLANGE
23	ROTOR	58	BLADE
24	BEARING 6000Z	59	OUTER FLANGE
25	CARBON BRUSHER	60	WASHER
26	CARBON BRUSHER NEST	61	HEX SCREW
27	CARBON BRUSHER HOLDER	62	ANGLE LOCKING KNOB 1
28	GEAR BOX	63	SCREW
29	NEEDLE BEARING HK0808	64	DEPTH STAND
30	CRICLIP	65	RIVET
31	GEAR	66	BASE PALTE
32	GEAR BOX COVER	67	PARALLEL GUIDE KNOB
33	WASHER	68	ANGLE STAND
34	SCREW	69	ANGLE LOCKING KNOB 2
35	SCREW	70	CAPACITOR
36	CRICLIP	888	HANDLE ASSEMBLE
37	DEPTH LOCK BUTTON		

ST20101125-01