

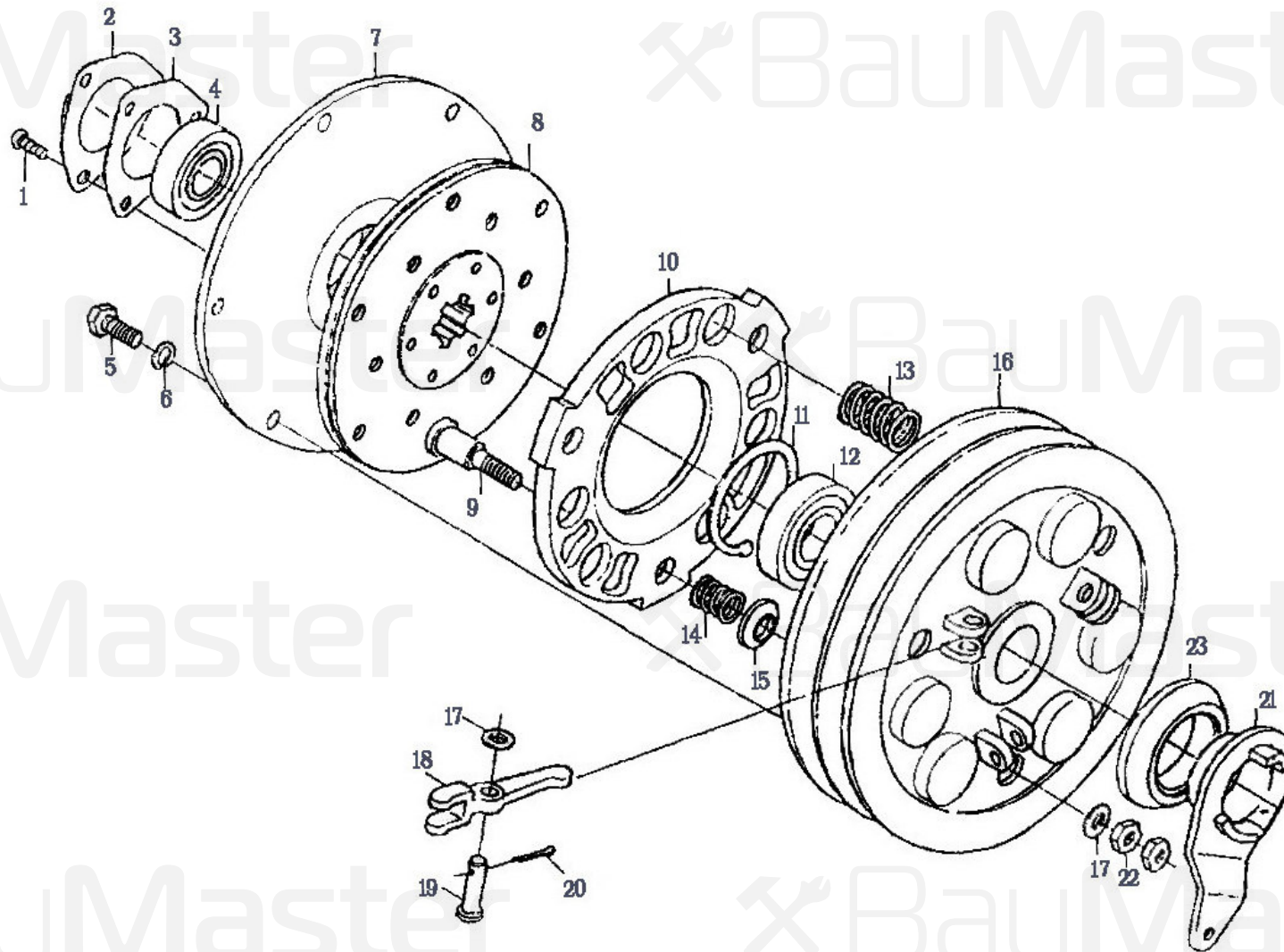
PART CATALOGUE

DT-8807X

DT-8809X

VERSION No. : BM20120110

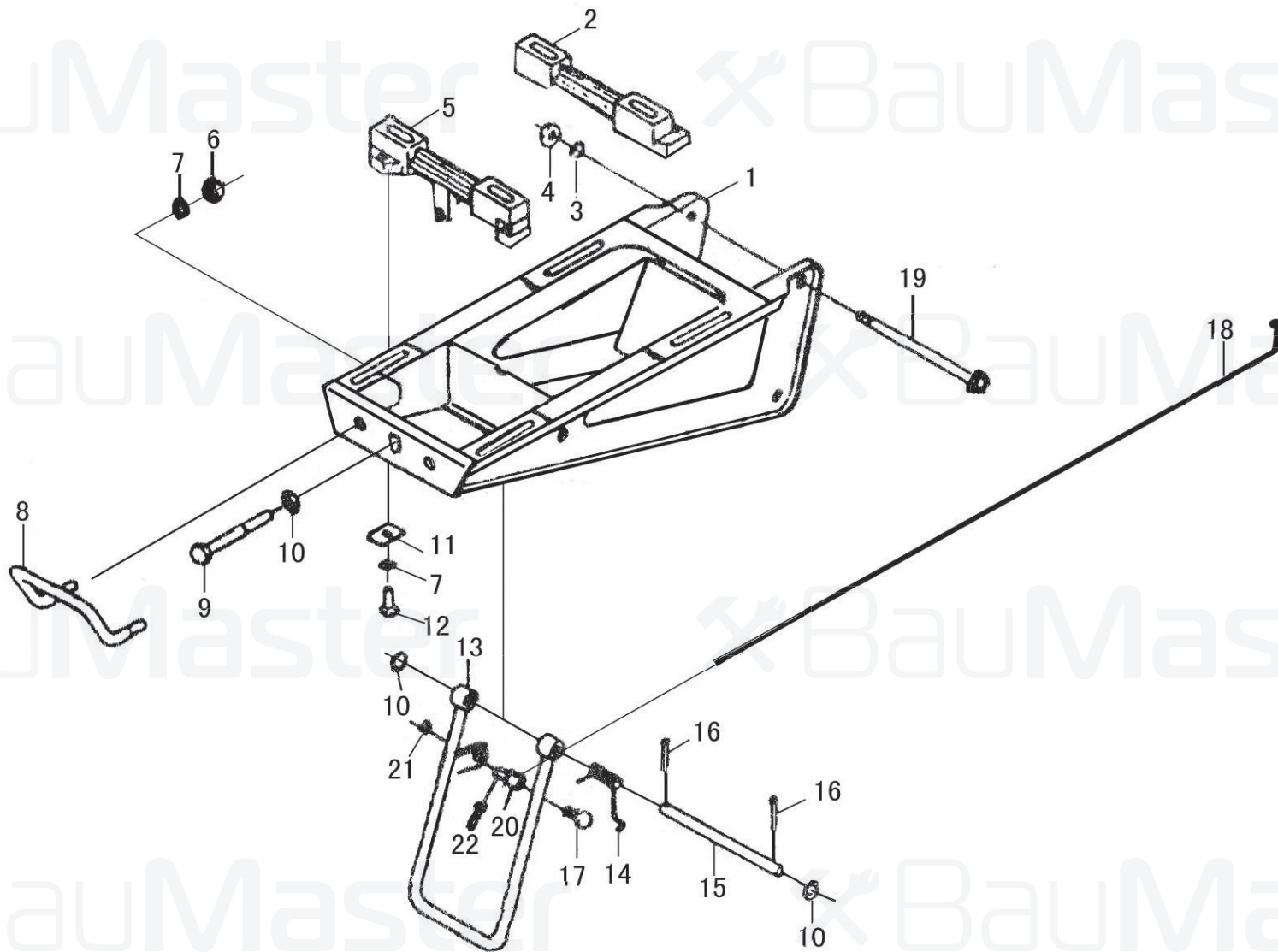
1 Clutch assembly (Pic.1)



Clutch assembly

No.	Parts name	No.	Parts name
1	Screw M6×16	13	Spring of clutch
2	Bearing cover	14	Spring
3	Paper pad	15	Dust sealing ring
4	Roll bearing 60204	16	Pulley wheel
5	Bolt M8×16	17	Washer
6	Washer 8	18	Separate lever
7	Pulley wheel cover	19	Pin shaft 8×28
8	Clutch driven plate assembly	20	Pin 2.5×20
9	Stretching screw	21	Clutch jaw
10	Clutch pressure plate	22	Nut M8
11	Lock ring 55	23	Release bearing 588908
12	Roll bearing 60206		

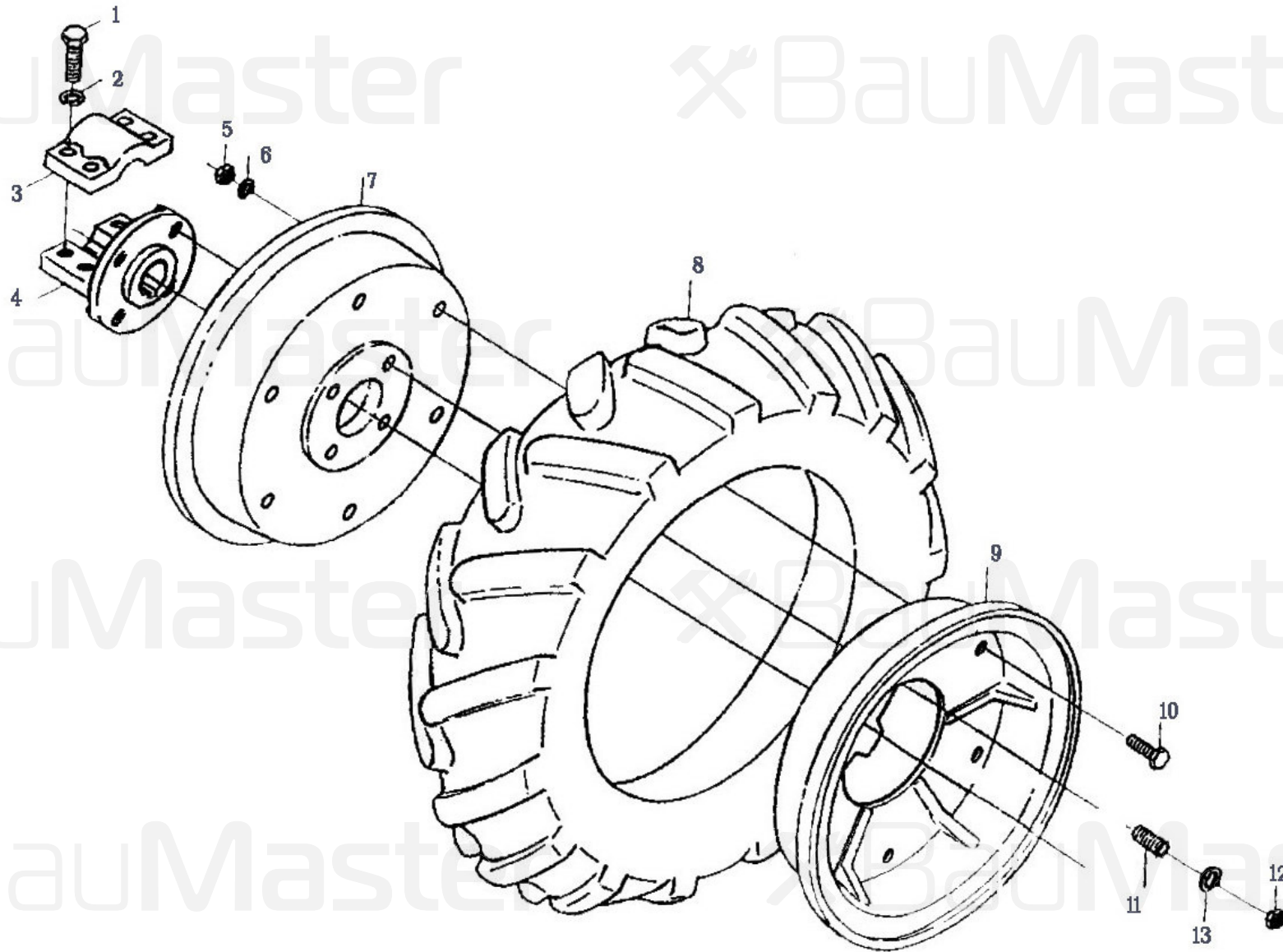
2. Frame assembly (Pic.2)



Frame assembly parts list

No.	Parts name	No.	Parts name
1	Frame seam	13	Frame solder part
2	Rear frame	14	Frame torque spring
3	Washer 14	15	Frame pin shaft
4	Nut M14	16	Pin 4*25
5	Front frame	17	Bolt M6*16
6	Nut M10	18	Frame pull pole
7	Washer 10	19	Bolt M14*185
8	Humper	20	Adjustment pin
9	Bolt M12*160	21	Washer 6-140HV
10	Washer 12-140HV	22	Pin 2*20
11	Washer		
12	Bolt M10*30		

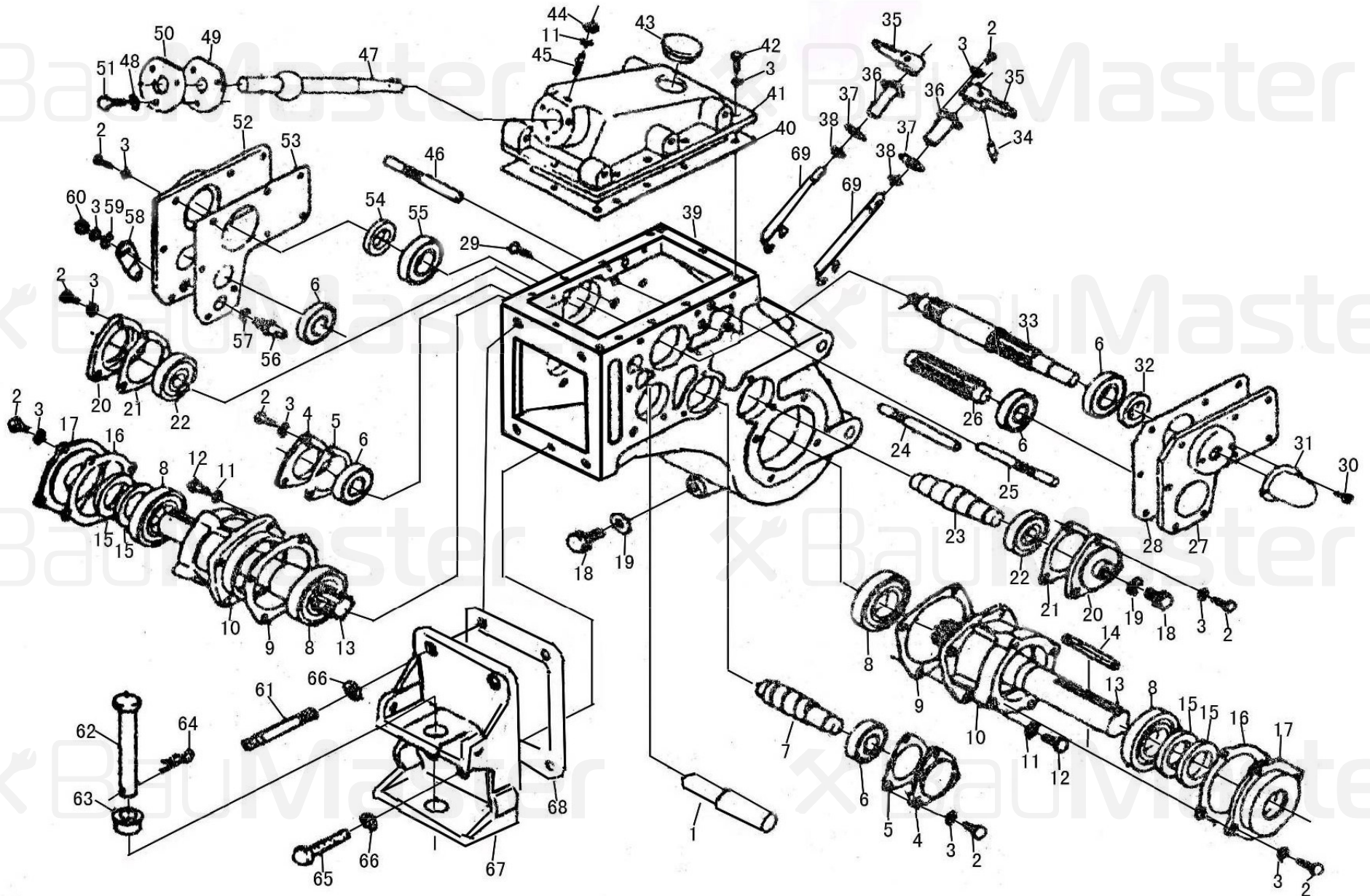
3. Driving wheel assembly (Pic.3)



Driving wheel assembly parts list

No.	Parts name	No.	Parts name
1	Bolt M12*45	8	Tyre 6.00-12
2	Washer 12	9	Wheel rim (A) 4.50E*30
3	Wheel hub cover	10	Bolt M10*30
4	Wheel hub	11	Double head bolt
5	Nut M10	12	Nut M12
6	Washer 10	13	Washer 12-140
7	Wheel rim (B) 4.50E*30		

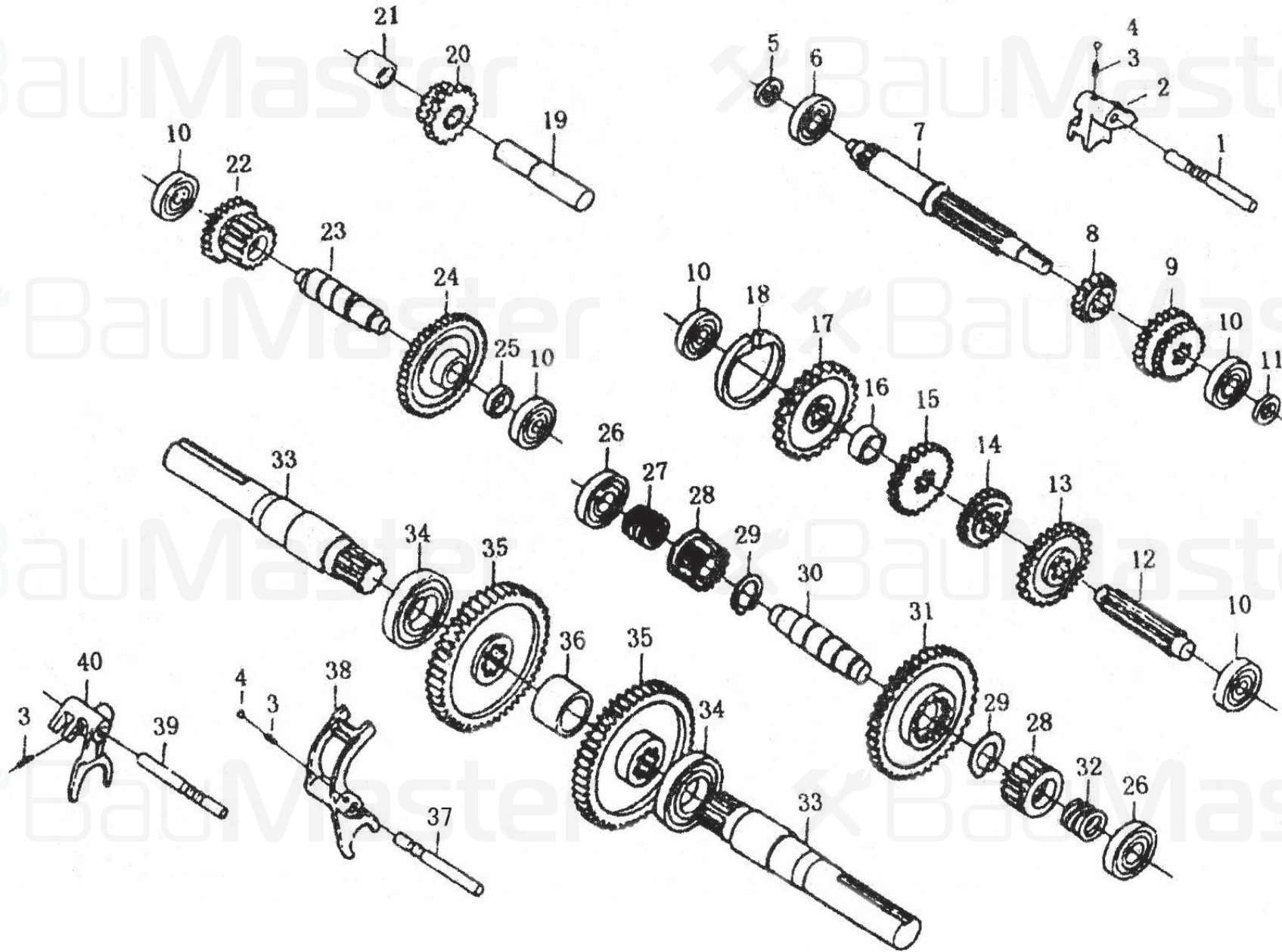
4. Gear box assembly (I) (Pic.4)



Gear box assembly (I) parts list

No	Parts name	No.	Parts name	No.	Parts name	No.	Parts name
1	Reverse gear shaft	19	Washer	37	Paper pad	55	Bearing 206
2	Bolt M8*20	20	Bearing cover	38	O Ring 19*2.4	56	Arresting lever
3	Washer 8	21	Paper pad	39	Gear box body	57	O Ring 14*2.4
4	Bearing cover	22	Bearing 305	40	Paper pad	58	Brake rocker arm
5	Paper pad	23	Steering shaft	41	Gear box cover	59	Washer 8
6	Bearing 304	24	Auxiliary gear box shift fork shaft	42	Nut M8*25	60	Nut M8
7	Auxiliary gearbox shaft	25	II 、 III speed shift fork shaft	43	Observing hole cover	61	Bolt AM12*30
8	Bearing 208	26	Second shaft	44	Nut M10	62	Traction pin
9	Paper pad	27	Paper pad of right cover	45	Gearlever position pin	63	Bush
10	Half Shaft shield	28	Right bearing cover	46	I Reversing shift fork shaft	64	Spring pin
11	Washer 10	29	Bolt M6*12	47	Inner gearlever	65	Bolt M12*30
12	Bolt M10*30	30	Bolt M6*8	48	Washer 6	66	Washer 12
13	Driving wheel shaft	31	Output shaft cover	49	Rubber pad	67	Traction casing
14	Key B12*125	32	Oil sealing SG20*40*8	50	Gearlever pressure cover	68	Paper pad
15	Oil sealing SG40*70*12	33	First shaft	51	Bolt M6*20	69	Steering shift fork
16	Paper pad	34	Pin 6*30	52	Left bearing cover		
17	Oil sealing base	35	Steering arm	53	Paper pad of left cover		
18	Screw plug	36	Steering shift fork cover	54	Oil sealing SG30*45*8		

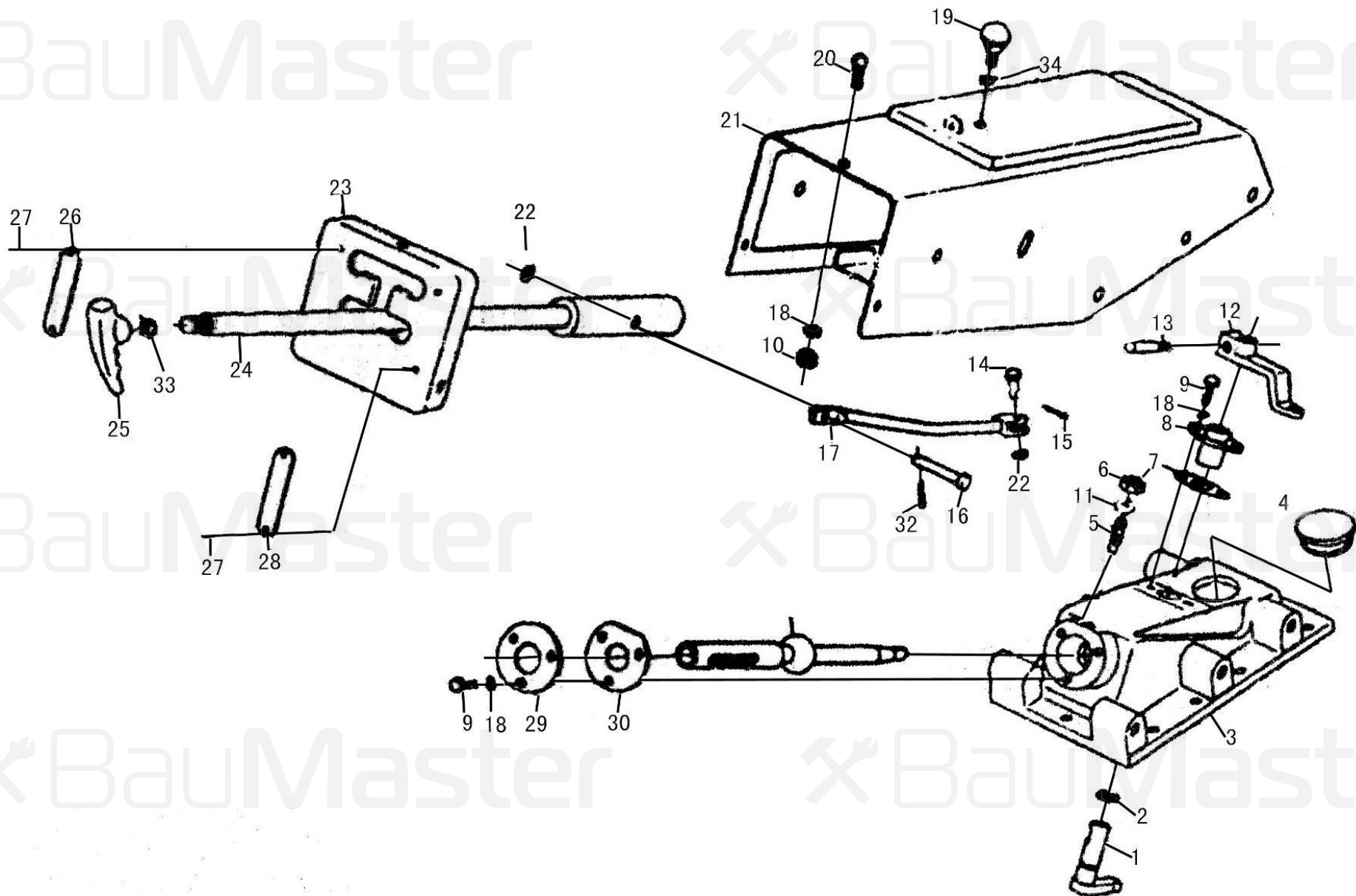
5. Gear box assembly(II) (Pic.5)



Gear box assembly (II) parts list

No.	Parts name	No.	Parts name
1	I reversing gear shift fork shaft	21	Reverse gear shaft bush
2	I reversing gear shift fork	22	Auxiliary gear-shift duplex gear
3	Position spring	23	Auxiliary gear-shift shaft
4	Steel ball Ø8	24	Reduction driven gear
5	Oil sealing SG30*45*8	25	Narrow lock ring
6	Bearing 206	26	Bearing 305
7	First shaft	27	Steering spring(right)
8	I Reverse idler gear	28	Steering gear box
9	II 、 III speed idler gear	29	Lock ring 32
10	Bearing 304	30	Steering shaft
11	Oil sealing SG20*40*8	31	Central big transmission gear
12	Second shaft	32	Steer spring(left)
13	II speed driven gear	33	Driving wheel shaft
14	Reduction idler gear	34	Bearing 208
15	III speed driven gear	35	Drive gear
16	Lock ring	36	Sleeve gasket
17	I speed driven gear	37	Auxiliary gear-shift shift fork shaft
18	Blake ring	38	Auxiliary gear-shift shift fork
19	Reversing gear shaft	39	II 、 III speed shift fork shaft
20	Reverse gear assembly	40	II 、 III speed shift fork

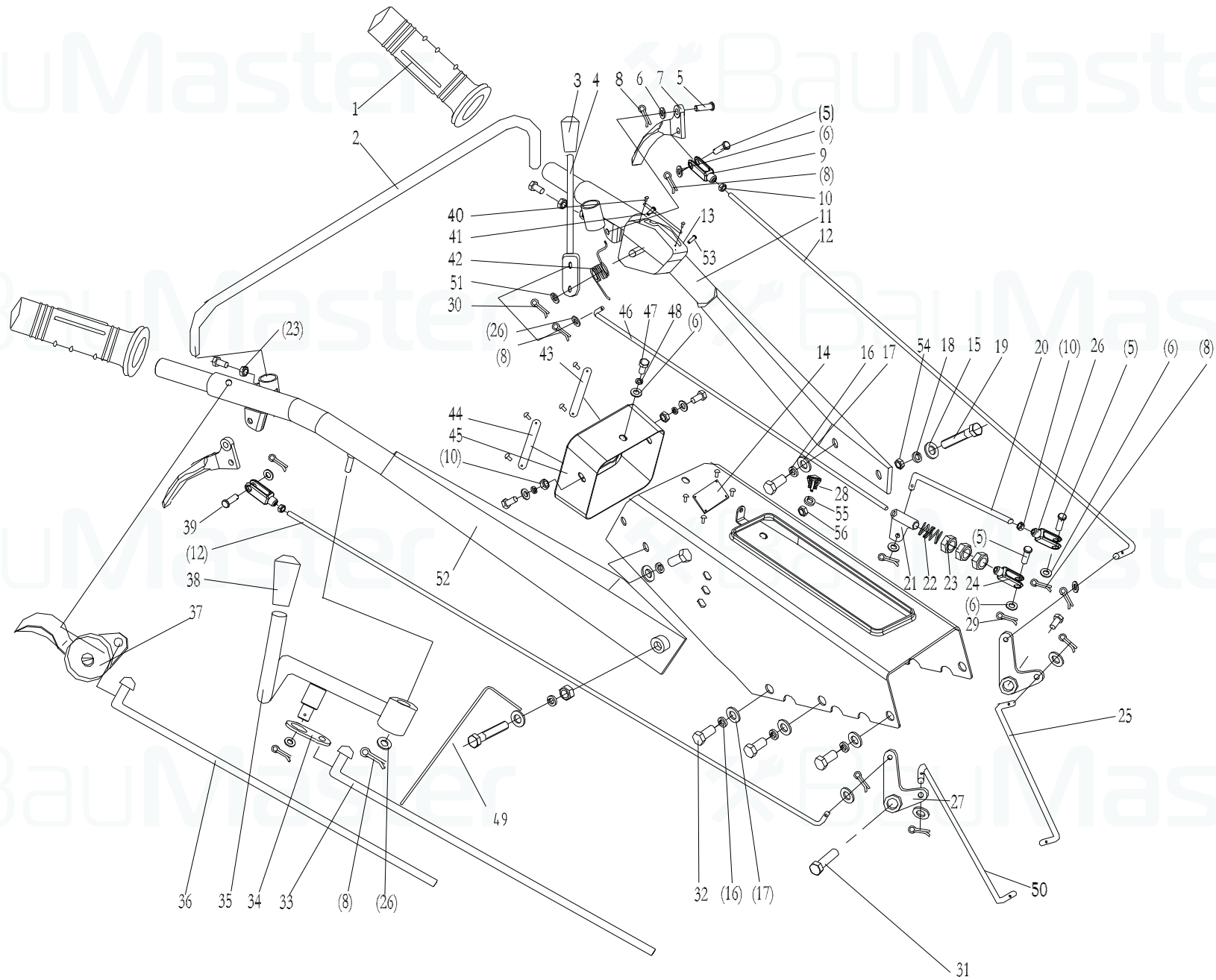
6. Speed change control mechanism (Pic.6)



speed change control mechanism parts list

No.	Parts name	No.	Parts name
1	Assistant gear fork rod	18	Washer 6
2	O Ring11.8*2.65	19	Handle assembly
3	Gear-box cover	20	Screw M6*12
4	Observing hole cover	21	Cover
5	Gearlever position pin	22	Washer 8
6	Nut M10	23	Shift board
7	Paper pad	24	Gearlever solder part
8	Guide sleeve	25	handle
9	Bolt M6*20	26	Left shift indicator
10	Nut M6	27	Rivet 2.5*6
11	Washer 10	28	Right shift indicator
12	Auxiliary shift gear rocking arm	29	Gearlever pressure cover
13	Pin 6*30	30	Rubber pad
14	Pin B8*22	31	Inner gearlever
15	Pin 2.5*20	32	Pin 2.5*26
16	Axis pin	33	Nut M16
17	Connecting pole solder part	34	Nut M5

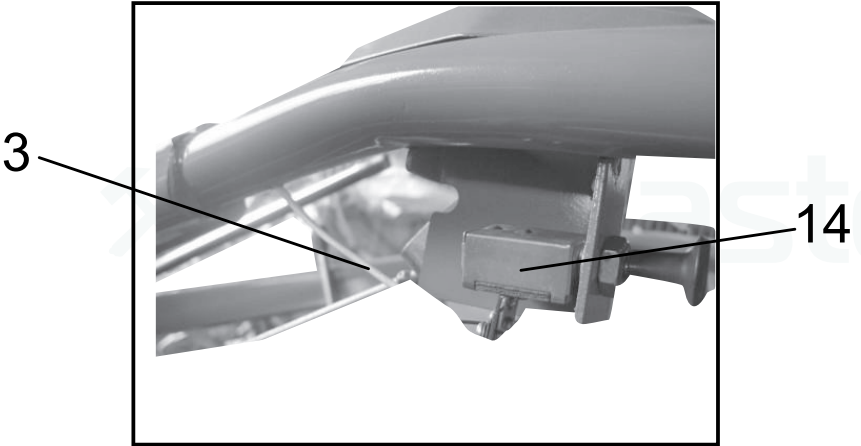
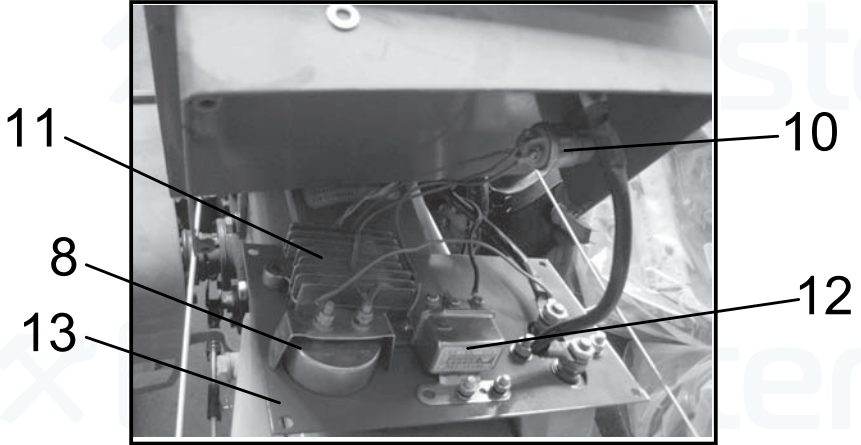
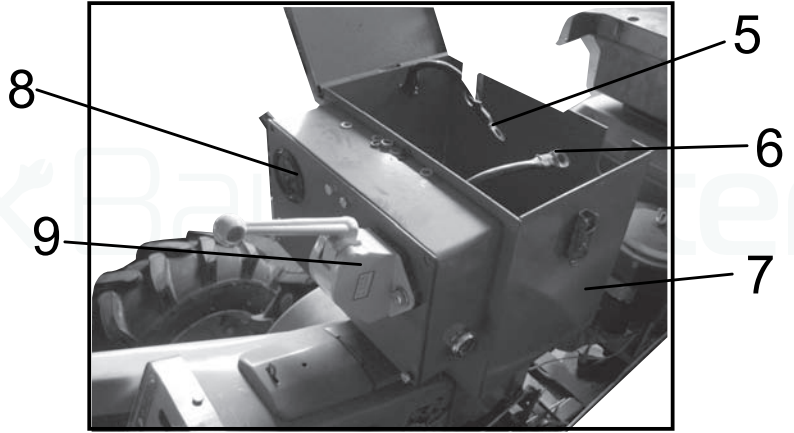
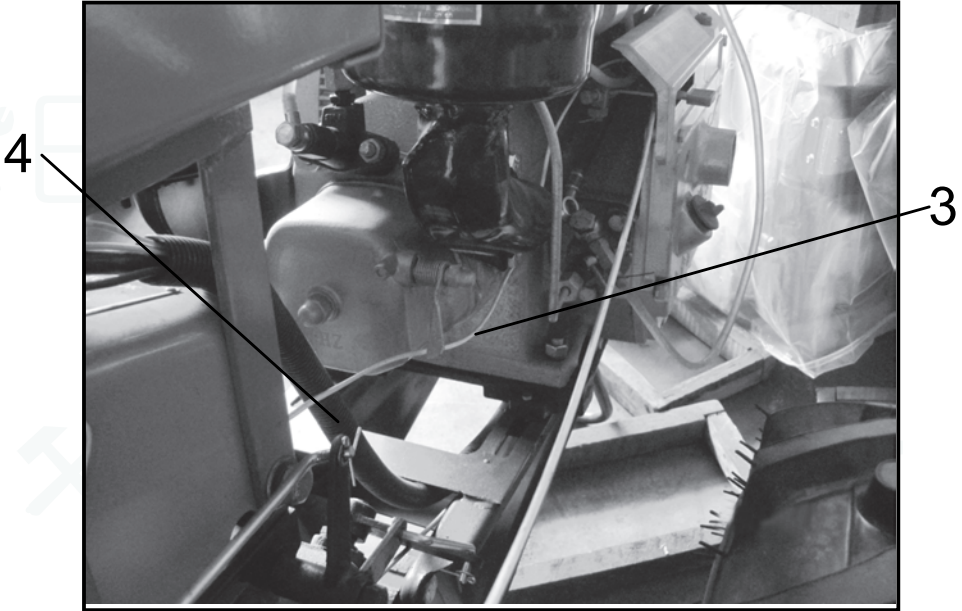
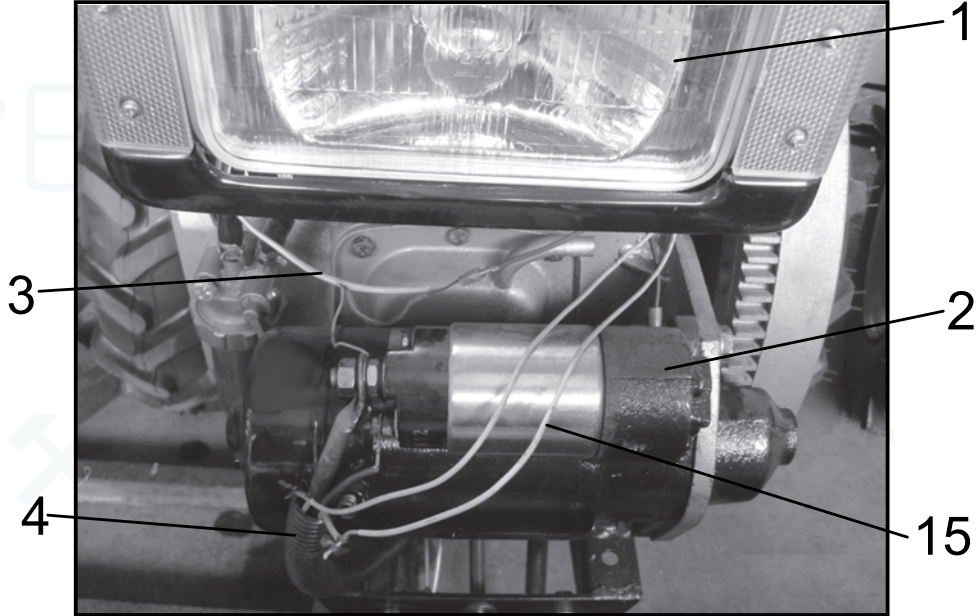
7. Control mechanism (Pic.7)



Control mechanism parts list

No.	Parts name	No.	Parts name	No.	Parts name	No.	Parts name
1	Handle sheath	16	Washer 12	31	Bolt	46	Clutch pull rod
2	Across handle	17	Washer 12	32	Bolt M12*25	47	Screw M6×16
3	Handle sheath of clutch	18	Washer 10	33	Frame pull rod	48	Washer 6
4	Clutch pull rod	19	Nut M10*50	34	Connection board	49	Hand throttle pull rod bracket
5	Short pin	20	Brake short pull rod	35	Steel handle	50	Turn right short pull rod
6	Washer 6	21	Pull hook	36	Pull rod of engine throttle	51	Washer 8
7	Steer handle	22	Arrester pressure spring	37	Throttle control trigger	52	Right handle
8	Pin 2*20	23	Nut M8	38	Handle ball	53	Screw M6*20
9	Small connection fork	24	Big connection fork	39	Bolt M8×20	54	Screw M12
10	Nut M6	25	Turn left short pull rod	40	Rivet 2.5×6	55	Washer 5
11	Left handle solder part	26	Connection fork	41	Clutch indicator	56	Nut M5
12	Steer pull rod	27	Steer arm cover	42	Torque spring		
13	Clutch position cover	28	Handle ball	43	Gear plate indicator(left)		
14	Label	29	Pin	44	Gear plate indicator(right)		
15	Washer 10	30	Pin 2.5*26	45	Gear plate		

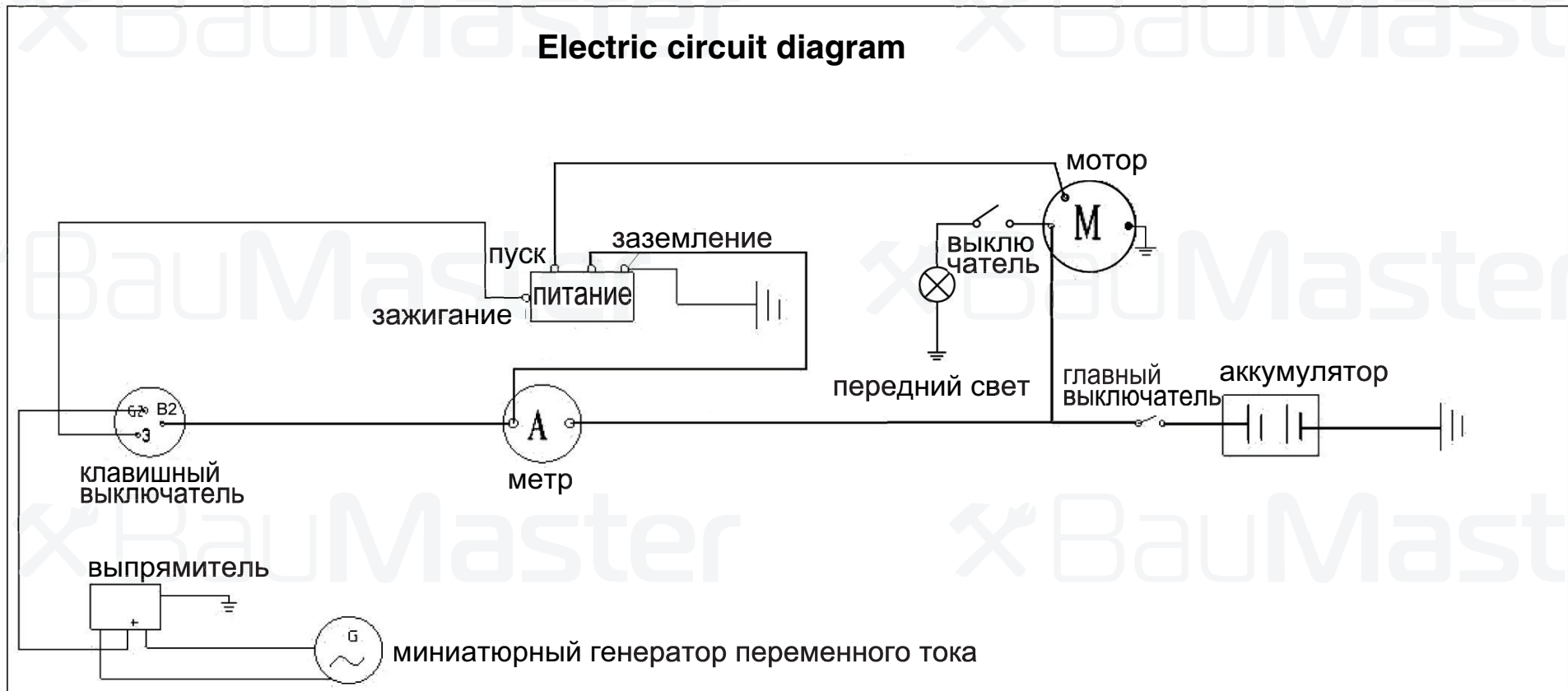
8. Electric start system parts list



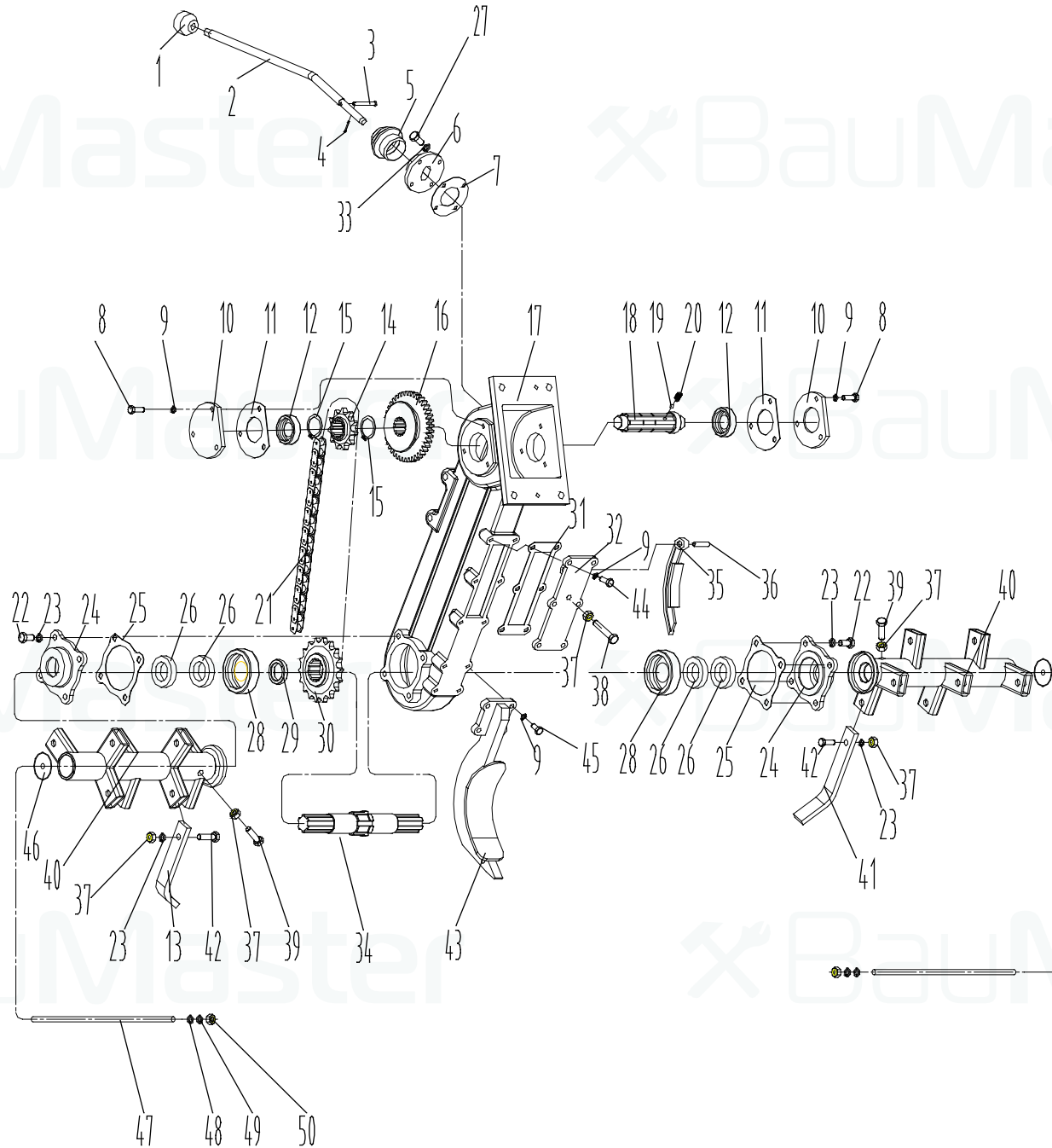
Electric start system parts list

No.	Parts Name	No.	Parts Name	No.	Parts Name
1	Light	6	Battery clip(“+” pole)	11	electronic adjustor
2	Start motor	7	Battery box	12	Start relay
3	Light switch wire	8	Current meter	13	Panel
4	Wiring harness	9	Power switch	14	Light switch
5	Battery clip(“-” pole)	10	Ignition switch	15	Miniature generator connecting wire

Electric circuit diagram



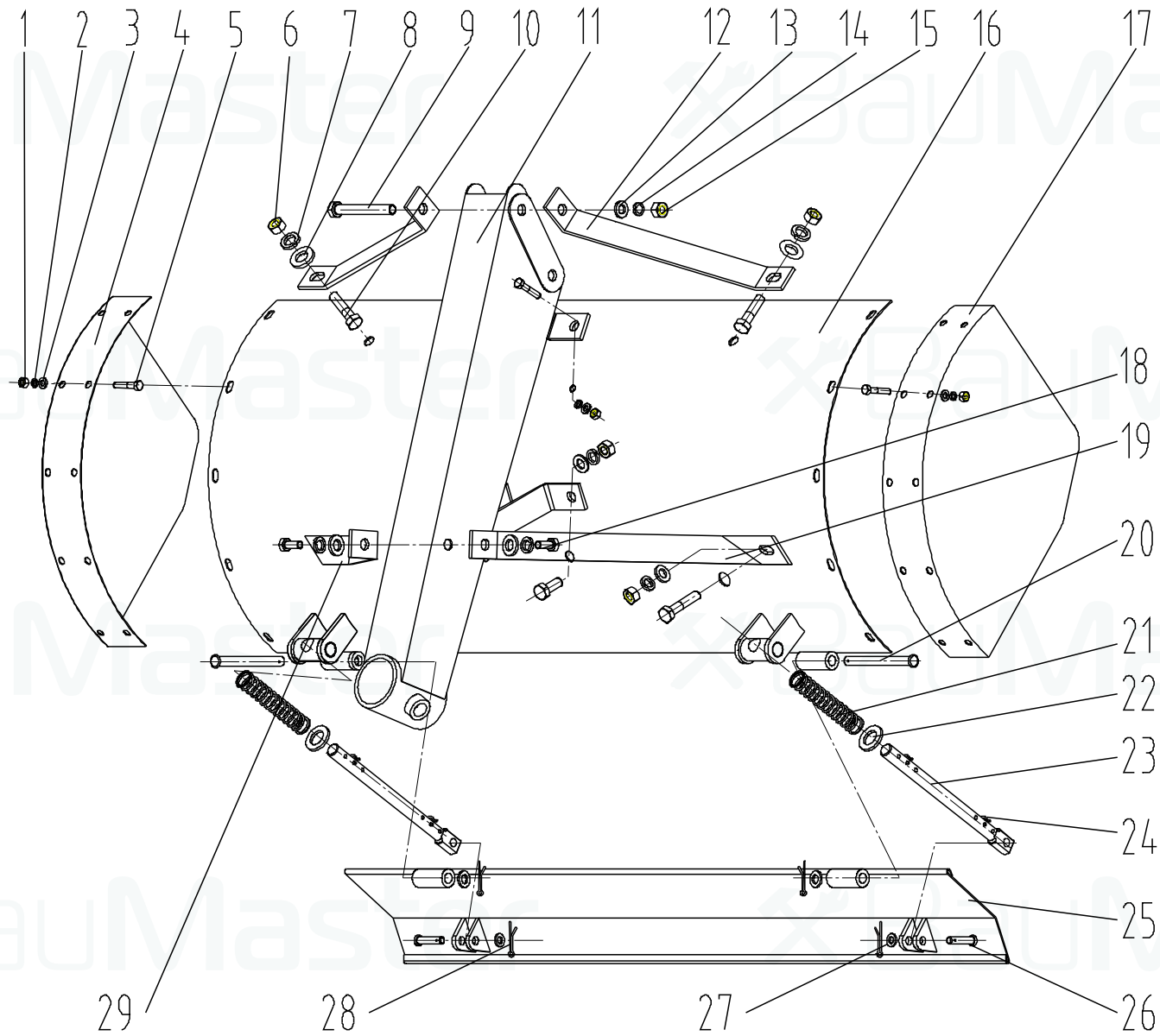
9. Sprocket wheel box assembly



Sprocket wheel box assembly

No.	Parts name	No.	Parts name	No.	Parts name
1	Handle ball	19	Steel ball	37	Nut
2	change speed lever	20	Retaining spring	38	bolt
3	Pin	21	Chain	39	Lock bolt I
4	Pin	22	Bolt	40	Coulter frame
5	Dustproof cover	23	Washer	41	Cultivator blade II
6	Upper cover	24	Oil sealing base	42	Bolt
7	Paper gasket	25	Paper gasket	43	Coulter
8	Bolt	26	Oil sealing	44	Bolt
9	Washer	27	Bolt	45	Bolt
10	End cover	28	Ball bearing	46	Stop plug
11	Paper gasket	29	bush	47	Pull pole
12	Ball bearing	30	Driven sprocket wheel	48	Washer
13	Cultivator blade I	31	Tension base gasket	49	Washer
14	driving sprocket wheel	32	Tension base	50	Nut
15	Circlip for shaft	33	Washer		
16	Sliding gear	34	II shaft		
17	Sprocket wheel case	35	Tension belt		
18	I shaft	36	Pin		

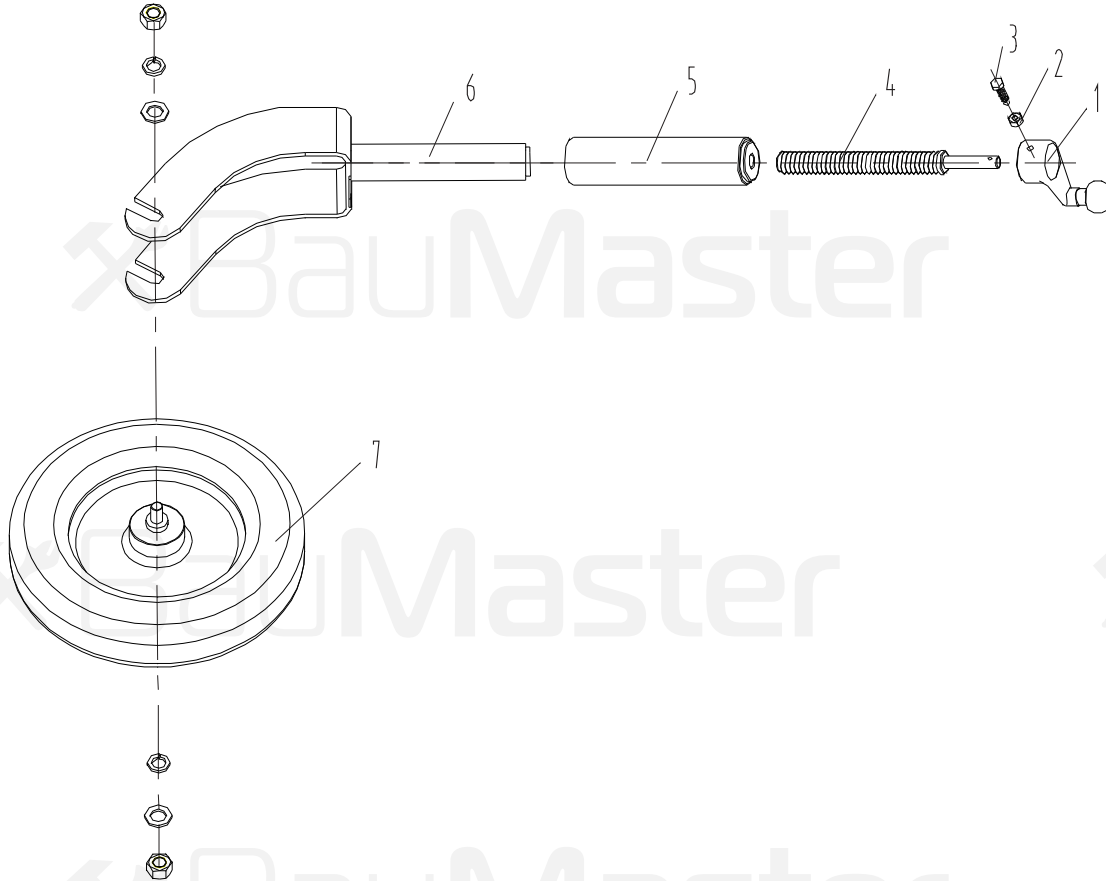
10. Cultivator shield assembly



Cultivator shield assembly

No.	Parts name	No.	Parts name
1	Nut	19	Right support plate
2	Washer	20	Pin
3	Washer	21	Compression spring
4	Left side plate	22	Washer
5	Bolt	23	Support pole
6	Nut	24	Spring pin
7	Washer	25	Draw plate
8	Washer	26	Pin shaft
9	Bolt	27	Washer
10	Bolt	28	Cotter pin
11	Shield	29	Left support plate
12	Front support plate		
13	Washer		
14	Washer		
15	Nut		
16	Top cover		
17	Right side plate		
18	Bolt		

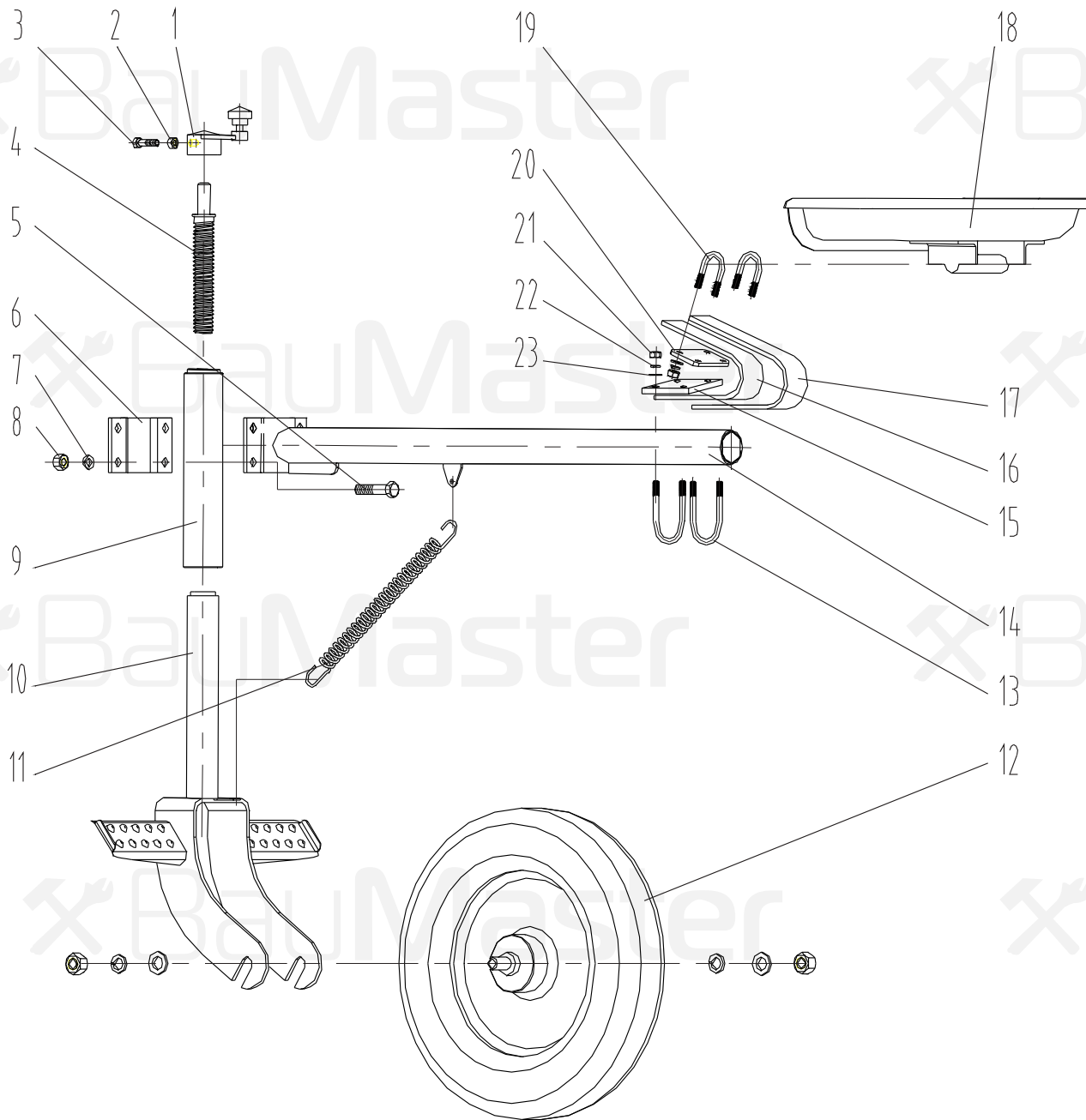
11. Rear wheel assembly



Rear wheel assembly

No.	Parts name
1	Screw rocking handle assembly
2	Nut
3	Locking screw II
4	Screw pole
5	Liftable tube
6	Connection fork
7	Wheel

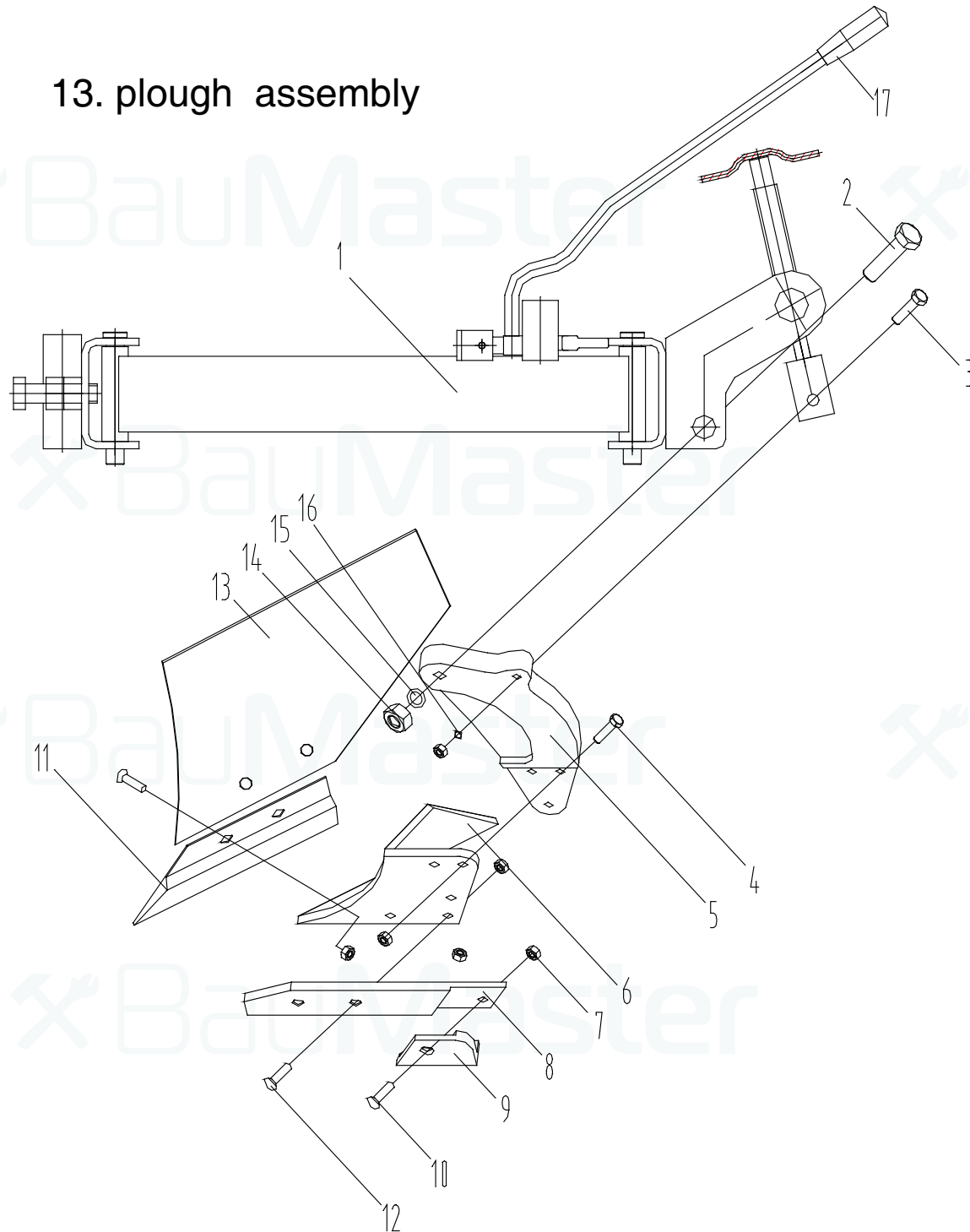
12. Riding support assembly



Riding support assembly

No.	Parts name
1	Screw rocking handle assembly
2	Nut
3	Locking screw II
4	Screw pole
5	Bolt
6	Pressure plate
7	Washer
8	Nut
9	Liftable tube
10	Connection fork
11	Pull spring
12	wheel (3.00-8)
13	U bolt II
14	Stay bar
15	Retaining plate II
16	Short leaf spring
17	Long leaf spring
18	Base
19	U bolt I
20	Retaining plate I
21	Nut
22	Washer
23	Washer

13. plough assembly



plough assembly

No.	Parts name
1	traction arm
2	Bolt M16×60
3	Bolt M10×55
4	Bolt M10×40
5	Plough girder
6	Plough palm
7	Bolt M10
8	Plough side board
9	Plough bell
10	Bolt M10×25
11	Plough shovel
12	Boot M10×35
13	Plough wall
14	Bolt M16
15	Washer 16
16	Washer 10
17	handle