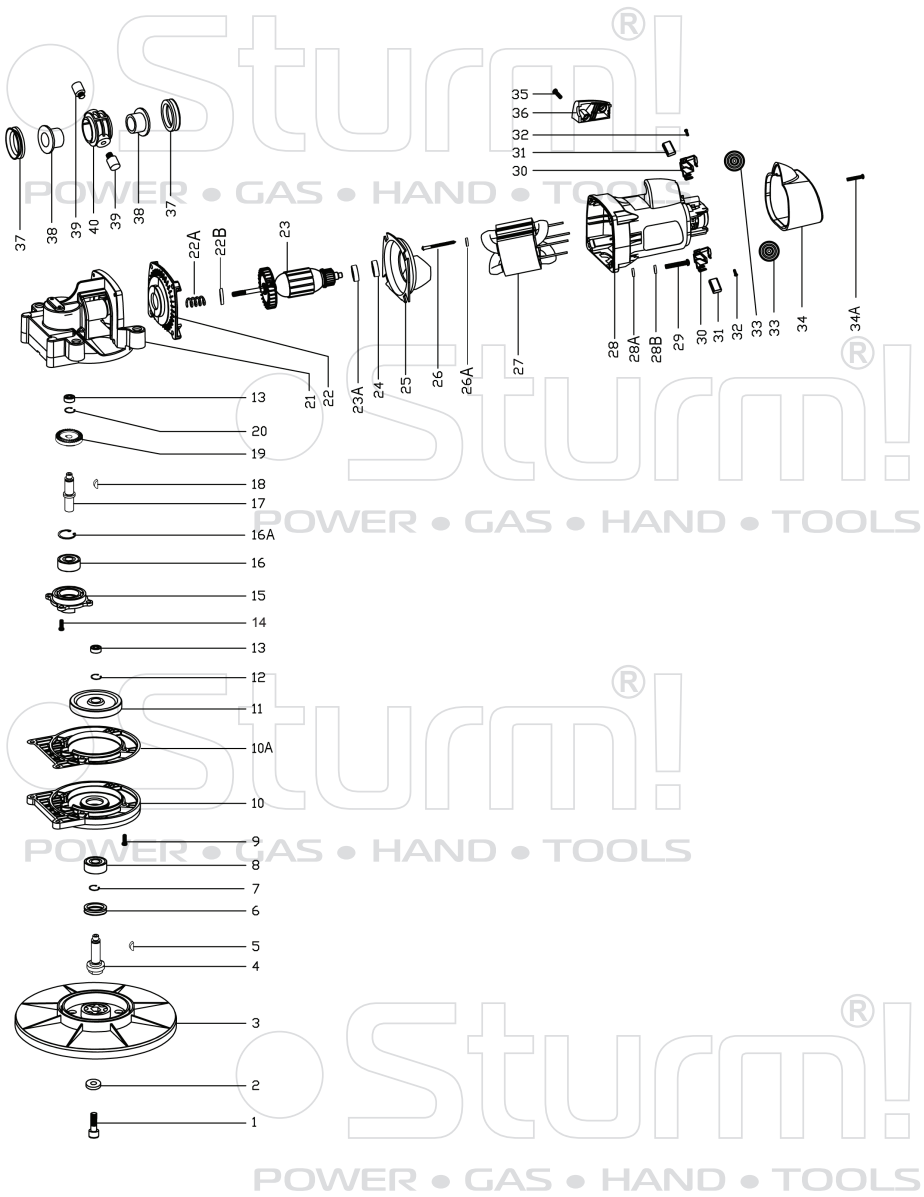
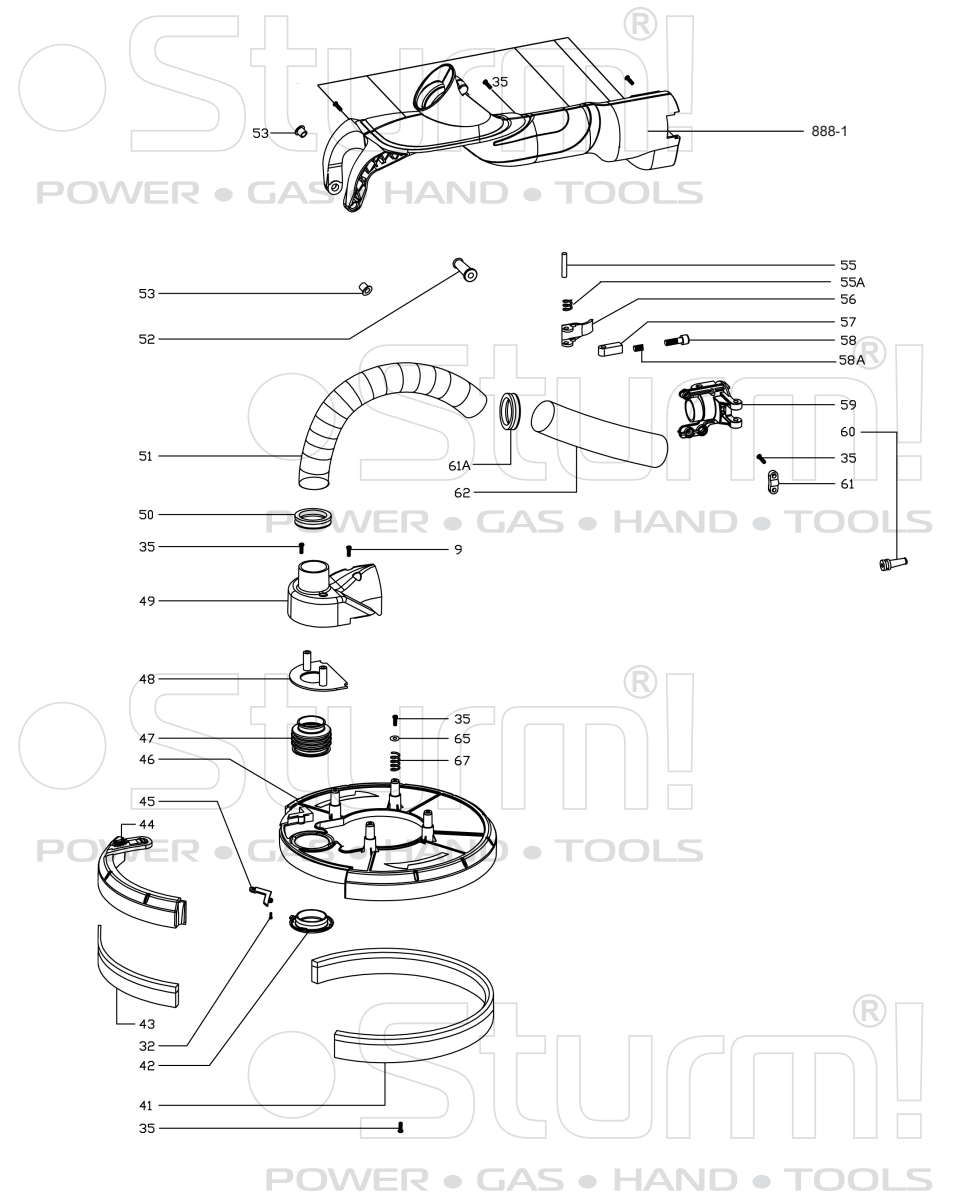


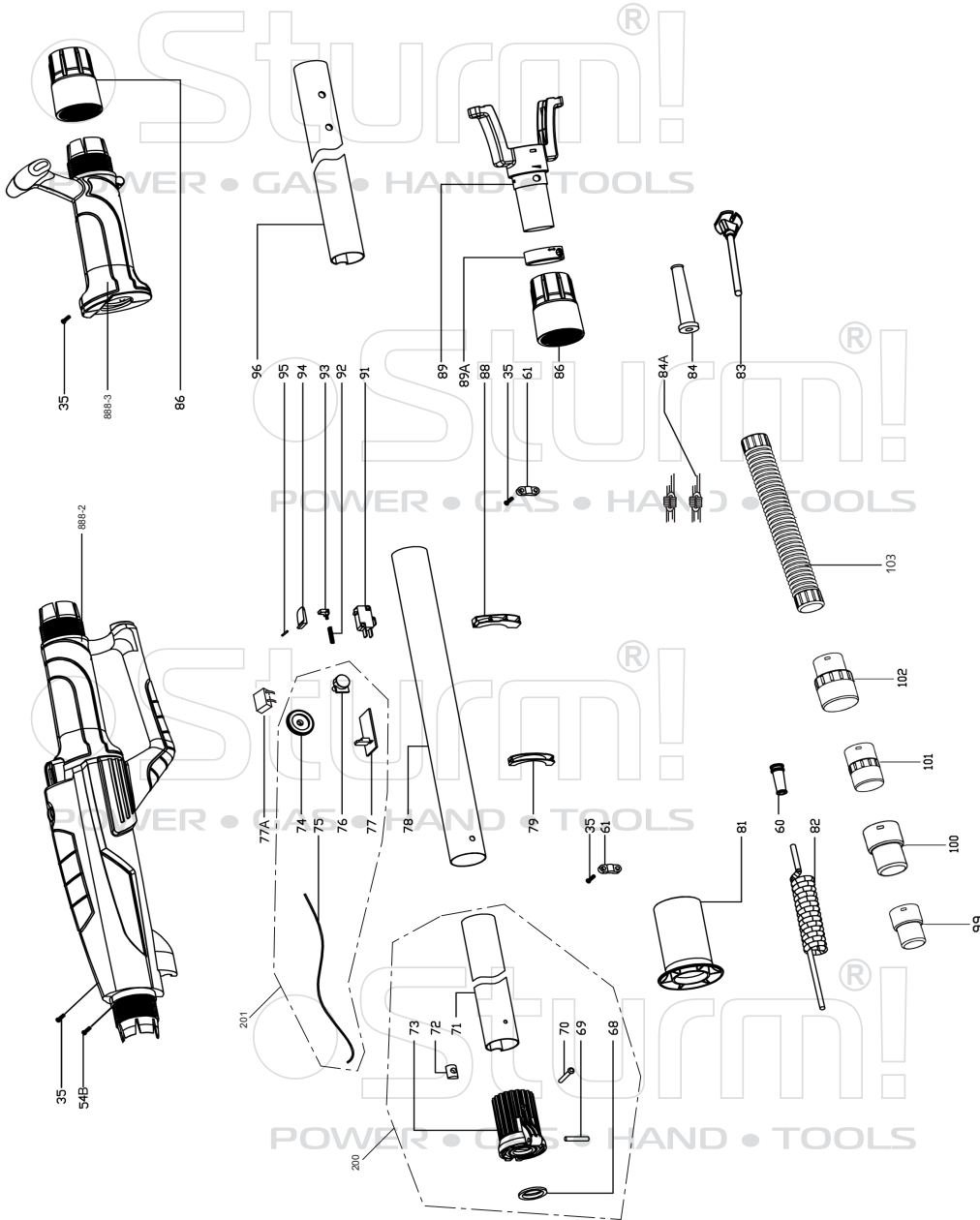
DWS6016-A



DWS6016-B



DWS6016-C



DWS6016

NO.	DESCRIPTION	NO.	DESCRIPTION	NO.	DESCRIPTION
1	M6X15 SCREW	31	CARBON BRUSH	69	HINGE SHAFT
2	Φ6 WASHER	32	SCREW ST3*10	70	SCREW ST5*40
3	SANDING PAD	33	COIL SPRING	71	ALUMINIUM PIPE Φ37.5
4	OUTPUT SHAFT	34	BACK COVER	72	BLOCK FOR FIXING POSITION
5	SEMI-CIRCULAR KEY 3X3X9	34A	SCREW	73	BACK HINGE SLEEVE
6	OIL SEAL	35	SCREW ST4*14	74	SPEED BUTTON
7	COLLAR Φ22	36	PRESSING BLOCK ON MOTOR HOUSING	75	INTERNAL WIRE
8	BALL BEARING 6900 -RZ	37	HORN DAMPING	76	POTENTIOMETER
9	SCREW M4*12	38	BIG RUBBER SLEEVE	77	ELECTRONIC SPEED CONTROL PLATE
10	BIG BEARING COVER	39	SCREW PIN	77A	CAPACITOR
10A	PAPER WASHER	40	FLEXIBLE SLEEVE	78	ALUMINIUM PIPE Φ40
11	END GEAR	41	LONG BRUSH SEGMENT	79	PRESSING BLOCK1#
12	COLLAR Φ10	42	PRESSING PLATE FOR CABLE SLEEVE	81	FRONT SCREW NUT
13	BALL BEARING 606-RZ	43	SHORT BRUSH SEGMENT	82	SPRING CABLE
14	SCREW M4*12	44	DETACHABLE	83	CABLE
15	SMALL BEARING COVER	45	PRESSING PLATE FOR SANDING PAD COVER	84	CABLE SLEEVE
16	BALL BEARING 699-RZ	46	SANDING PAD COVER	84A	INDUCATOR
16A	COLLAR	47	WAVED SLEEVE	86	BACK SCREW NUT
17	MAIN DRIVING SHAFT	48	END BLOCK FOR DUST COLLECTION COVER	88	PRESSING BLOCK 2#
18	SEMI-CIRCULAR KEY 3X3X10	49	DUST COLLECTION COVER	89	PROTECTION CONNECTOR
19	TAPERED GEAR	50	TIGHTENING RING 25-38	89A	ADJUSTABLE RING
20	COLLAR Φ9	51	350 HOSE WITH 2 WIRES	91	SWITCH
21	GEAR BOX	52	SLEEVE 1#	92	SPRING FOR SWITCH
22	MIDDLE COVER	53	SMALL RUBBER SLEEVE	93	SWITCH PUSHING LEVER
22A	SPRING	55	CIRCULAR PIN Φ5X28	94	SWITCH BUTTON
22B	FELTED WOOL	55A	SPRING	95	CIRCULAR PIN Φ1.8X16
23	ROTOR	56	WRENCH	96	ALUMINIUM PIPE Φ37.5
23A	DUST RING	57	SCREW COVER	99	Φ35MM CONNECTION ADAPTER
24	BALL BEARING 607-RZ	58	SCREW M6X22	100	Φ41MM CONNECTION ADAPTER
25	ANTI-WIND RING	58A	PIN	101	Φ47MM CONNECTION ADAPTER
26	SCREW ST4*55	59	FRONT HINGE SLEEVE	102	Φ57MM CONNECTION ADAPTER
26A	SPRING WASHER	60	SLEEVE 2#	103	FLEXIBLE HOSE ASSEMBLY
27	STATOR	61	CABLE PRESSING PLATE	200	ALUMINIUM PIPE ASSEMBLY
28	MOTOR HOUSING	61A	CONNECTION ADAPTER Φ28	201	VARIABLE SPEED SWITCH
28A	WASHER	62	PLASTIC SOFT PIPE Φ28	888-1	HANDLE STAND ASSEMBLY
28B	SPRING WASHER	65	WASHER Φ4	888-2	MAIN HANDLE ASSEMBLY
29	SCREW M4*20	67	COMPRESSED SPRING	888-3	SUB-HANDLE ASSEMBLY
30	BRUSH HOLDER	68	O RING Φ28		

ST20120206