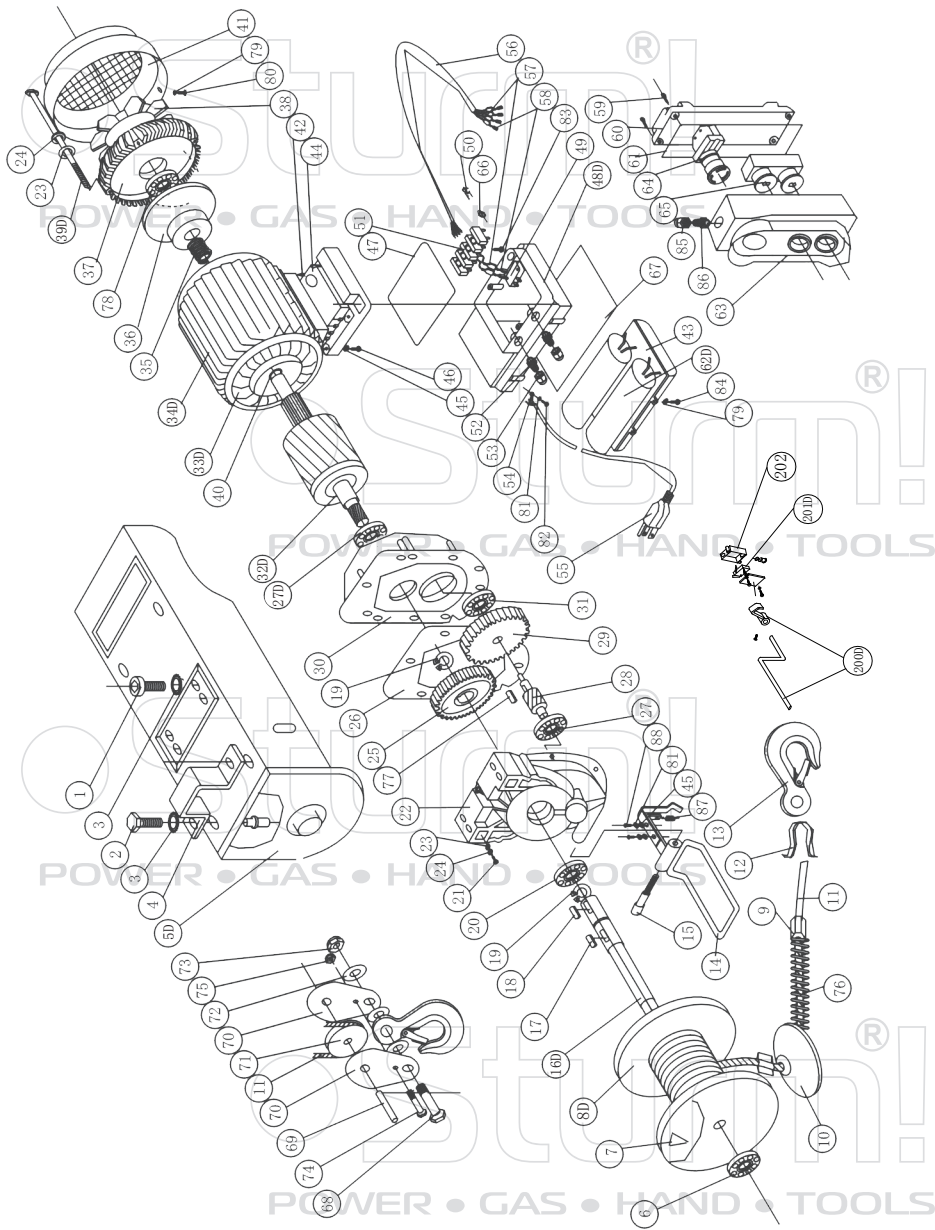


EH72100



| NO. | DESCRIPTION | NO. | DESCRIPTION |
|-----|--------------------------------|------|--|
| 1 | HEX SOCKET CAP HEAD SCREWS9 | 48D | CONNECTING HOUSING(SUBMIT) |
| 2 | HEX HEAD BOLTSM12X25 | 49 | MICROSWITCH |
| 3 | LOCK WASHERS EXTERNAL TEETH | 50 | SWITCH SHAFT |
| 4 | FIXING RING | 51 | TERMINAL BLOCK |
| 5D | FIXING RACK | 52 | WIRE CLIP |
| 6 | BEARING 6204 | 53 | PRESSING TIGHT NUT |
| 7 | WEDGE | 54 | GROUNDING SHEET |
| 8D | ROPE TUBE | 55 | THREE-CORE PLUG |
| 9 | FASTENING SLEEVE OF ROPE | 56 | FOUR CORE CABLE |
| 10 | POURING WEIGHT | 57 | PLUG-IN SHEET |
| 11 | ROPE | 58 | SLEEVE OF PLUG-IN SHEET |
| 12 | SHRINK-RING OF ROPE | 59 | CROSS RECESSED PAN HEAD TAPPING SCREWS |
| 13 | LIFT HOOK | 60 | HANDLE BASE |
| 14 | SPACING RACK | 61 | HANDLE SEALED LOOP |
| 15 | CLAMP CONNECTER M8X45 | 62D | CAPACITOR |
| 16D | SHAFT OF ROPE TUBE | 63 | HANDLE COVER |
| 17 | SQUARE KEY 8X30 | 64 | EMERGENCY STOP SWITCH |
| 18 | SQUARE KEY 8X20 | 65 | POSITIVE AND NEGATIVE SWITCH |
| 19 | CIRCLIP FOR SHAFT Ø 25 | 66 | SLEEVE OF MICROSWITCH |
| 20 | BEARING 6205 | 67 | CONNECTING HOUSING SPACE |
| 21 | HEX SOCKET SCREW | 68 | HEXAGON HEAD BOLTSM12X30 |
| 22 | GEAR BOX | 69 | CLAMP CONNECTER |
| 23 | PLAIN WASHER Ø 6 | 70 | PULLEY CLAMP |
| 24 | SPRING WASHER Ø 6 | 71 | PULLEY |
| 25 | GRADE 2 GEAR | 72 | PLAIN WASHER Ø10 |
| 26 | PAPER SEAL | 73 | NUT |
| 27D | BEARING 6204 | 74 | HEXAGON HEAD BOLT |
| 28 | INTERMEDIATE SHAFT | 75 | NUT |
| 29 | GRADE 1 GEAR | 76 | SPRING |
| 30 | FRONT COVER | 77 | SQUARE KEY6X16 |
| 31 | BEARING 6201 | 78 | BEARING 6203 |
| 32D | ROTOR | 79 | PLAIN WASHER Ø3 |
| 33D | STATOR | 80 | CROSS RECESSED PAN HEAD SCREWS |
| 34D | CHASSIS | 81 | LOCKWASHERSEXTERNAL TEETH |
| 35 | SPRING | 82 | CROSS RECESSED PAN HEAD SCREWS |
| 36 | BRAKE HOOP | 83 | CROSS RECESSED PAN HEAD TAPPING SCREWS |
| 37 | GEAR COVER | 84 | CROSS RECESSED PAN HEAD TAPPING SCREWS |
| 38 | FAN BLADE | 85 | WIRECLIP |
| 39D | HEX HEAD BOLTS | 86 | PRESSING TIGHT NUT |
| 40 | "O" WASHER | 87 | SPRING |
| 41 | FAN HOOD | 88 | CROSS RECESSED PAN HEAD SCREWS |
| 42 | HEX SOCKET SCREW | 200D | DOWN LIMIT POLE ASSEMBLY |
| 43 | CONNECTING HOUSING | 201D | DOWN LIMIT SWITCH |
| 44 | CONNECTING HOUSING(DOWN) | 202 | TERMINAL BLOCK |
| 45 | PLAIN WASHER Ø4 | | |
| 46 | CROSS RECESSED PAN HEAD SCREWS | | |
| 47 | CONNECTING HOUSING SPACER | | |