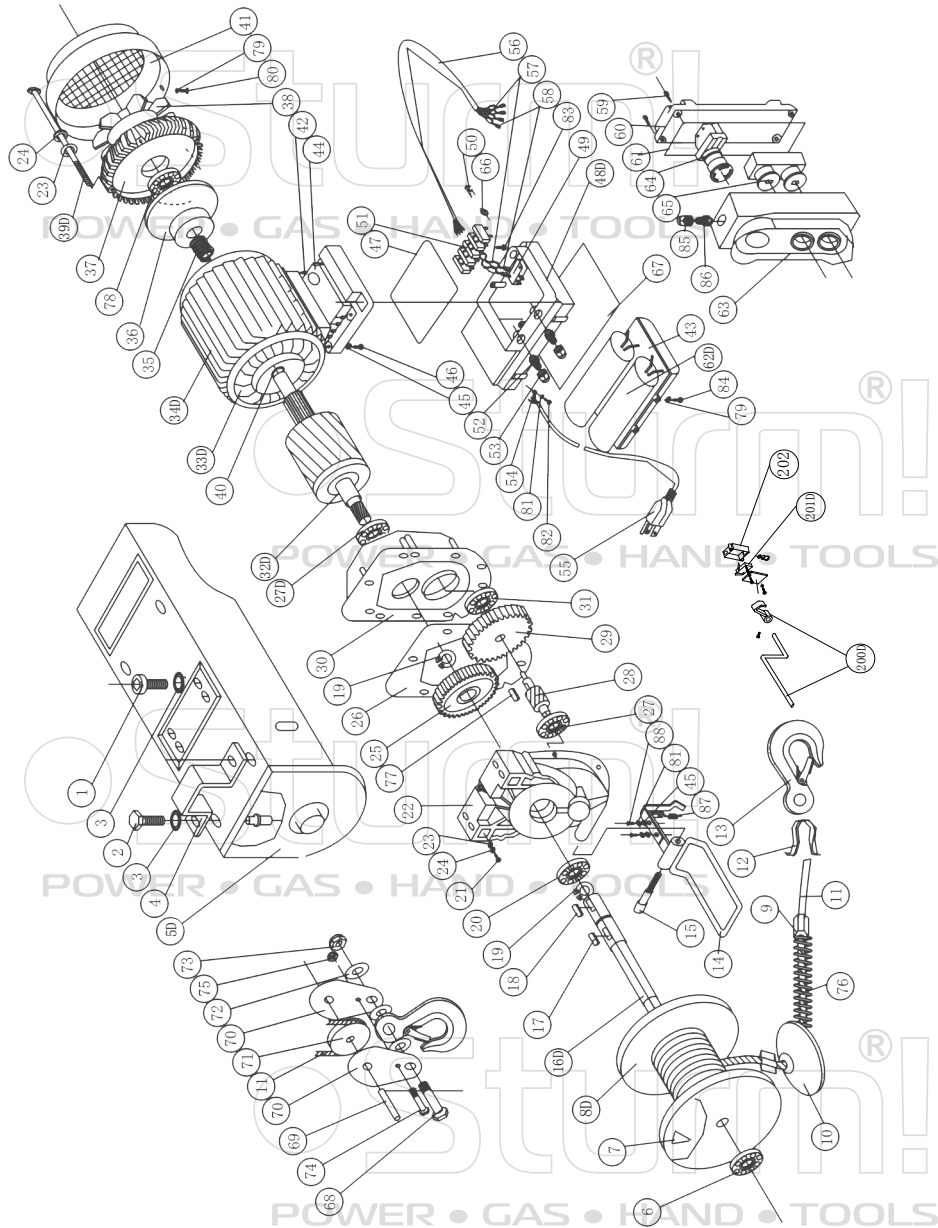


EH72100



NO.	DESCRIPTION	NO.	DESCRIPTION
1	HEX SOCKET CAP HEAD SCREWS9	47	CONNECTING HOUSING SPACER
2	HEX HEAD BOLTSM12X25	48D	CONNECTING HOUSING(SUBMIT)
3	LOCK WASHERS EXTERNAL TEETH	49	MICROSWITCH
4	FIXING RING	50	SWITCH SHAFT
5D	FIXING RACK	51	TERMINAL BLOCK
6	BEARING 6204	52	WIRE CLIP
7	WEDGE	53	PRESSING TIGHT NUT
8D	ROPE TUBE	54	GROUNDING SHEET
9	FASTENING SLEEVE OF ROPE	55	THREE-CORE PLUG
10	Pouring Weight	56	FOUR CORE CABLE
11	ROPE	57	PLUG-IN SHEET
12	SHRINK-RING OF ROPE	58	SLEEVE OF PLUG-IN SHEET
13	LIFT HOOK	59	CROSS RECESSED PAN HEAD TAPPING SCREWS
14	SPACING RACK	60	HANDLE BASE
15	CLAMP CONNECTER M8X45	61	HANDLE SEALED LOOP
16D	SHAFT OF ROPE TUBE	62D	CAPACITOR ASSEMBLY
17	SQUARE KEY 8X30	63	HANDLE COVER
18	SQUARE KEY 8X20	64	EMERGENCY STOP SWITCH
19	CIRCLIP FOR SHAFT Ø 25	65	POSITIVE AND NEGATIVE SWITCH
20	BEARING 6205	66	SLEEVE OF MICROSWITCH
21	HEX SOCKET SCREW	67	CONNECTING HOUSING SPACE
22	GEAR BOX	68	HEXAGON HEAD BOLTSM12X30
23	PLAIN WASHER Ø 6	69	CLAMP CONNECTER
24	SPRING WASHER Ø 6	70	PULLEY CLAMP
25	GRADE 2 GEAR	71	PULLEY
26	PAPER SEAL	72	PLAIN WASHER Ø10
27	BEARING 6202	73	NUT
27D	BEARING 6204	74	HEXAGON HEAD BOLT
28	INTERMEDIATE SHAFT	75	NUT
29	GRADE 1 GEAR	76	SPRING
30	FRONT COVER	77	SQUARE KEY6X16
31	BEARING 6201	78	BEARING 6203
32D	ROTOR	79	PLAIN WASHER Ø3
33D	STATOR	80	CROSS RECESSED PAN HEAD SCREWS
34D	CHASSIS	81	LOCKWASHERSEXTERNAL TEETH
35	SPRING	82	CROSS RECESSED PAN HEAD SCREWS
36	BRAKE HOOP	83	CROSS RECESSED PAN HEAD TAPPING SCREWS
37	GEAR COVER	84	CROSS RECESSED PAN HEAD TAPPING SCREWS
38	FAN BLADE	85	WIRECLIP
39D	HEX HEAD BOLTS	86	PRESSING TIGHT NUT
40	"O" WASHER	87	SPRING
41	FAN HOOD	88	CROSS RECESSED PAN HEAD SCREWS
42	HEX SOCKET SCREW	200D	DOWN LIMIT POLE ASSEMBLY
43	CONNECTING HOUSING	201D	DOWN LIMIT SWITCH
44	CONNECTING HOUSING(DOWN)	202	TERMINAL BLOCK
45	PLAIN WASHER Ø4		
46	CROSS RECESSED PAN HEAD SCREWS		