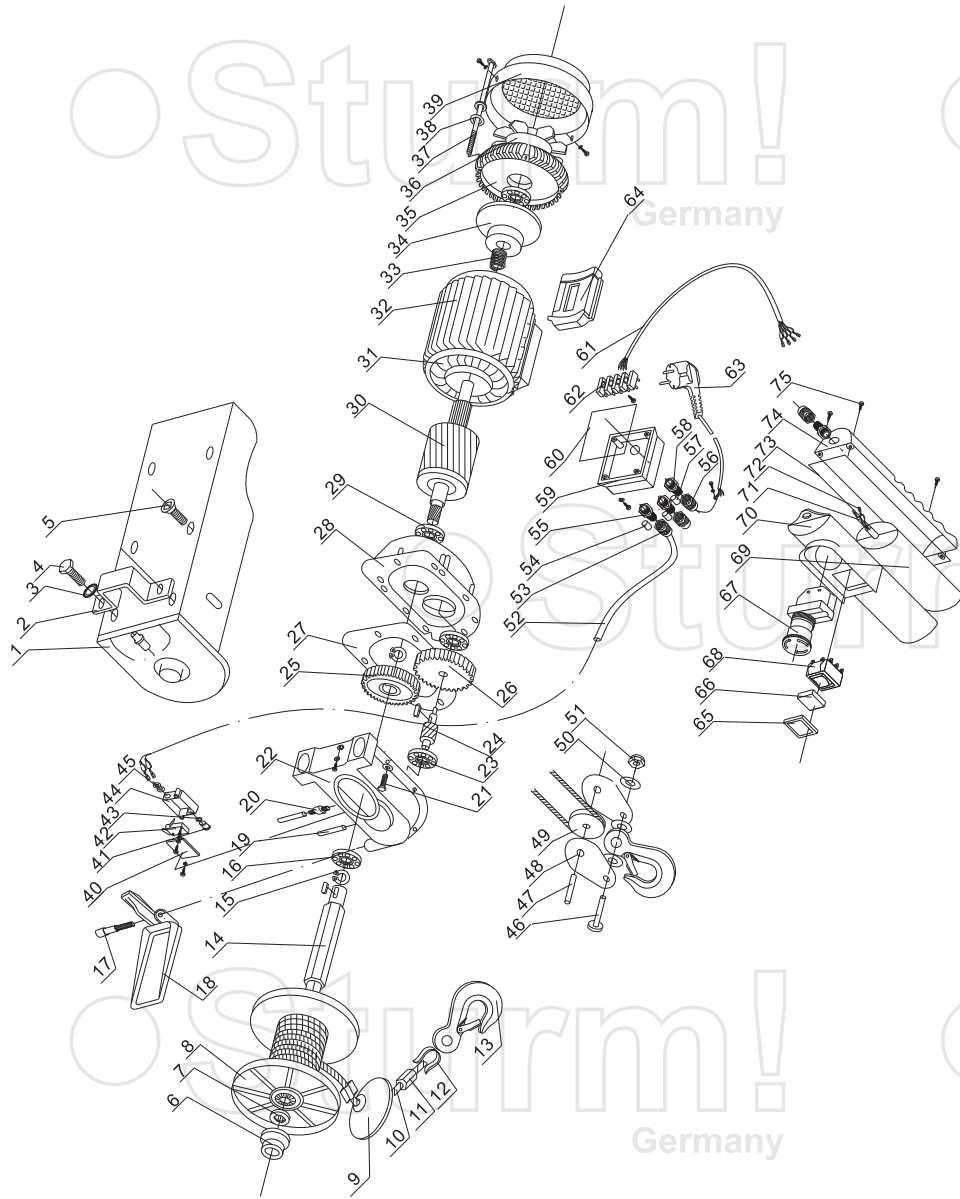


# EH7220



NO.	DESCRIPTION	NO.	DESCRIPTION
1	FIXING RACK	39	FAN HOOD
2	FIXING RING	40	MICROSWITCH COVER
3	LOCK WASHERS EXTERNAL TEETH	41	MICROSWITCH SHAFT
4	HEXAGON HEAD BOLTS	42	MICROSWITCH
5	HEXAGON SOCKET CAP HEAD SCREWS	43	CIRCLIP
6	CRADLE	44	MICROSWITCH BOX
7	WASHER	45	GUARD RING (SMALL)
8	ROPE TUBE	46	CYLINDER PIN
9	POURING WEIGHT	47	CLAMP CONNECTER
10	ROPE	48	PULLEY CLAMP
11	FASTENING SLEEVE OF ROPE	49	PULLEY
12	SHRINK-RING OF ROPE	50	PLAIN WASHER
13	LIFT HOOK	51	NUT
14	SHAFT OF ROPE TUBE	52	TWO CORE CABLE
15	CIRCLIP FOR SHAFT	53	PRESSING TIGHT NUT(SMALL)
16	BEARING 60202	54	SHEATH(SMALL)
17	HEXAGON SOCKET SCREW	55	WIRECLIP
18	SPACING RACK	56	PRESSING TIGHT NUT(LARGE)
19	CYLINDER PIN	57	SHEATH(LARGE)
20	DOUBLE END STUDS	58	WIRE CLIP(LARGE)
21	HEXAGON HEAD BOLTS	59	CONNECTING HOUSING
22	GEAR BOX	60	CONNECTING HOUSING SPACER
23	BEARING 60200	61	FOUR CORE CABLE
24	INTERMEDIATE SHAFT	62	PLACES TERMINAL BLOCK
25	GRADE 1 GEAR	63	THREE-CORE PLUG
26	GRADE 2 GEAR	64	PAD
27	SPACER	65	WINDOW OF SWITCH COVER
28	FRONT COVER	66	SWITCH COVER
29	BEARING 60201	67	EMERGENCY STOP SWITCH
30	ROTOR	68	POSITIVE AND NEGATIVE SWITCHES
31	STATOR	69	CAPACITOR
32	CHASSIS	70	HANDLE COVER
33	SPRING	71	PLUG-IN SHEET
34	BRAKE HOOP	72	SLEEVE OF PLUG-IN SHEET
35	GEAR COVER	73	HANDLE SEALED LOOP
36	FAN BLADE	74	HANDLE BASE
37	HEXAGON HEAD BOLTS	75	CROSS RECESSED PAN HEAD TAPPING SCREWS
38	PLAIN WASHER		