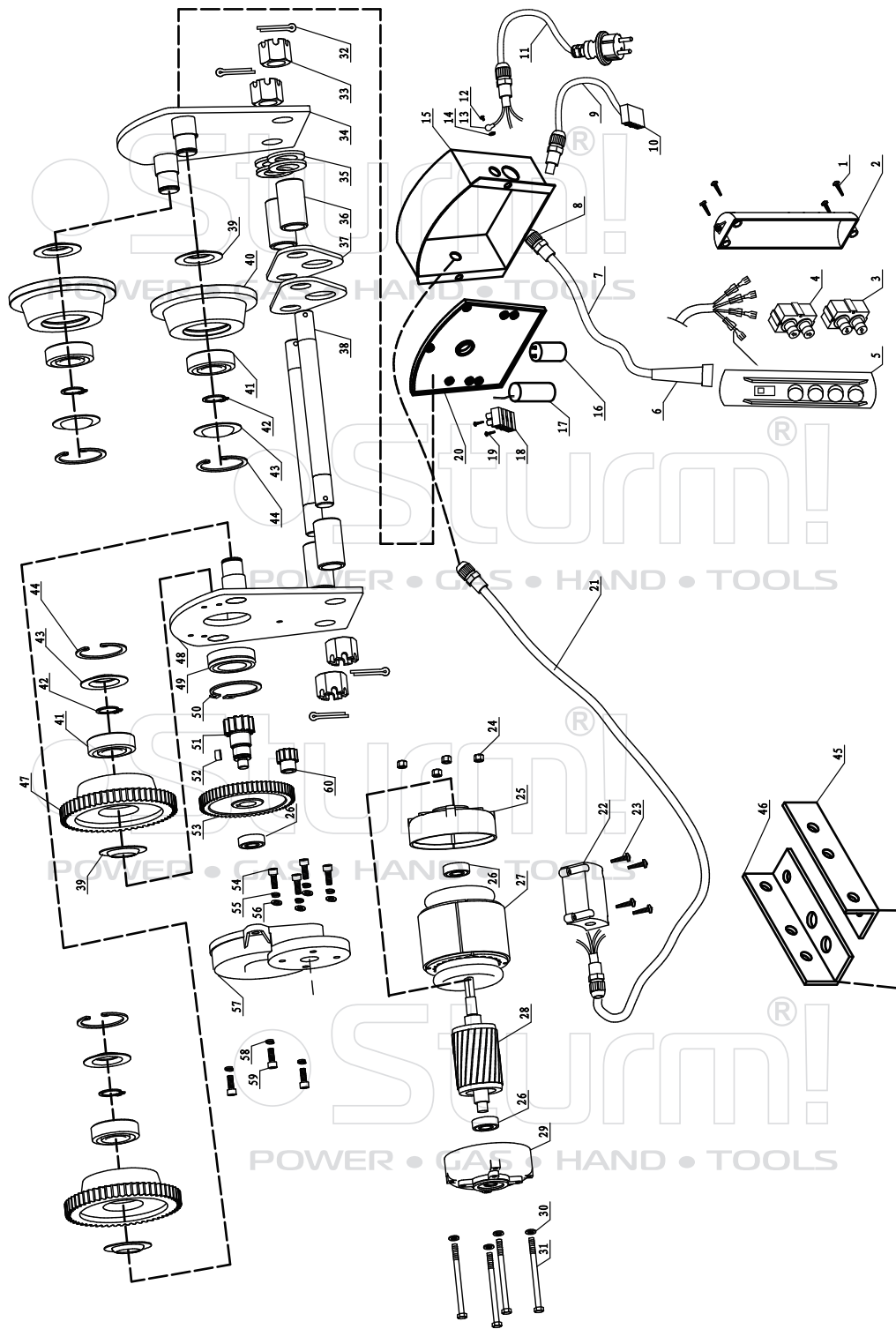


ELECTRIC HOIST OF EH72421

NO.	DESCRIPTION	NO.	DESCRIPTION
1	SOCKET SUNK HEAD SCREW	44	LOWER AIRPROOF LOOP OF JUNCTION BOX
2	SUBULATE TOOTH-WASHER	45	LOWER COVER OF JUNCTION BOX
3	OUTER HEX BOLT	46	CROSS PAN HEAD SCREW
4	SPRING WASHER	47	CROSS PAN HEAD TAPPING SCREW
5	WASHER	48	POSITION LIMITED SWITCH
6	FASTEN CLAMP	49	SNAP RING
7	HOUSING COVER	50	BUTTON SPRING LOOP
8	ROLLING BEARING6203	51	POSITION LIMITED BUTTON
9	SHAFT WASHER FOR ROPE DRUM	52	CONNECTION ENDING
10	ROPE PIN	53	UP AIRPROOF LOOP OF JUNCTION BOX
11	ROPE DRUM	54	UP COVER OF JUNCTION BOX
12	STEEL WIRE ROPE	55	ELICITING LINE
13	BALANCE WEIGHT	56	PLUG-IN REED JACKET
14	UPPER LIMIT OF BIT FRAME COMPONENTS	57	PLUG-IN REED
15	ALUMINUM BUCKLE	58	RUBBER LOOP
16	PROTECTIVE LOOP FOR STEEL WIRE ROPE	59	CROSS PAN HEAD TAPPING SCREW
17	SOCKET SHAFT FOR ROPE DRUM	60	COPPER HEAD
18	FLAT KEY	61	ANTI-KINK DEVICE OF CABLE LINE
19	ROLLING BEARING6203	62	CABLE LINE
20	OUTER HEX BOLT	63	BINDING
21	SPRING WASHER	64	PLUG-IN REED JACKET
22	FLAT WASHER	65	PLUG-IN REED
23	GEAR BOX	79	LOCKNUT
24	SMALL HELICAL GEAR	80	FLAT WASHER
25	SNAP RING	81	LOCKNUT
26	PAPER WASHER	82	PULLEY PLYWOOD
27	ROLLING BEARING6201	83	PULLEY WASHER
28	GEAR DRIVING SHAFT	84	PULLEY
29	FLAT KEY	85	OUTER HEX BOLT
30	BIG HELICAL GEAR	86	COLUMN NUT
31	FRONT HOUSING COVER	87	PULLEY SHAFT
32	ROLLING BEARING 6202	88	REED OF POSITION LIMITED SWITCH
33	ROTOR	89	TIE-IN OF POSITION LIMITED SWITCH
34	STATOR	90	POSITION LIMITED BRACKET
35	MOTOR HOUSING	91	SOCKET SCREW
36	BRAKE SPRING	92	UP REED OF POSITION LIMITED SWITCH
37	BRAKE ASSEMBLY	93	LIMITED POSITION SLICE
38	BACK HOUSING COVER	94	OUTER HEX BOLT
39	FAN	95	LIMITED POSITION SLICE
40	FAN COVER	96	DOWN LIMITED POSITION POLE
41	OUTER HEX BOLT	97	HOOK
42	FLAT WASHER	105	SHAFT WASHER FOR ROPE DRUM
43	CROSS PAN HEAD SCREW		



ELECTRIC TROLLEY OF EH72421

NO.	DESCRIPTION	NO.	DESCRIPTION
1	SCREW M4X16	31	SCREW M4X10
2	THE RIGHT COVER OF CONTROL BOX	32	SPLIT PIN 3.2X40
3	LEFT AND RIGHT SWITCH	33	SPLIT SCREW M18X15
4	UP AND DOWN SWITCH	34	SURPORT BOARD
5	THE LEFT COVER OF CONTROL BOX	35	GASKET
6	CABLE SLEEVE	36	BUSH
7	CONTROL CABLE	37	ANGLE IRON
8	CABLE CLAMP	38	DOUBLE-HEAD SCEW
9	CABLE	39	BEARING COVER
10	PLUG	40	RUN WHEEL
11	POWER CABLE	41	BEARING 6204
12	SCREW M4X8	42	CIRCLIP $\Phi 20$
13	GROUND GASKET	43	BEARING COVER
14	GASKET	44	CIRCLIP FOR HOLE $\Phi 47$
15	CONNECT BOX	45	LEFT ANGLE IRON
16	CAPACITOR 1	46	RIGHT ANGLE IRON
17	CAPACITOR 2	47	GEAR
18	TERMINAL BLOCK	48	SURPORT BOARD
19	SCREW	49	BEARING 6204
20	RUBBER WASHER	50	CIRCLIP FOR SHAFT $\Phi 47$
21	CABLE	51	GEAR
22	CABLE BOX	52	KEY
23	SCREW	53	BIG GEAR
24	NUT M4	54	SCREW M5X14
25	THE FRONT COVER OF MOTOR	55	SPRING GASKET
26	BEARING 6200	56	GASKET
27	STATOR	57	GEAR BOX
28	ROTOR	58	SPRING GASKET
29	REAR COVER	59	SCREW M6X14
30	GASKET	60	PINION

ST20130621

POWER • GAS • HAND • TOOLS

Sturm!

POWER • GAS • HAND • TOOLS