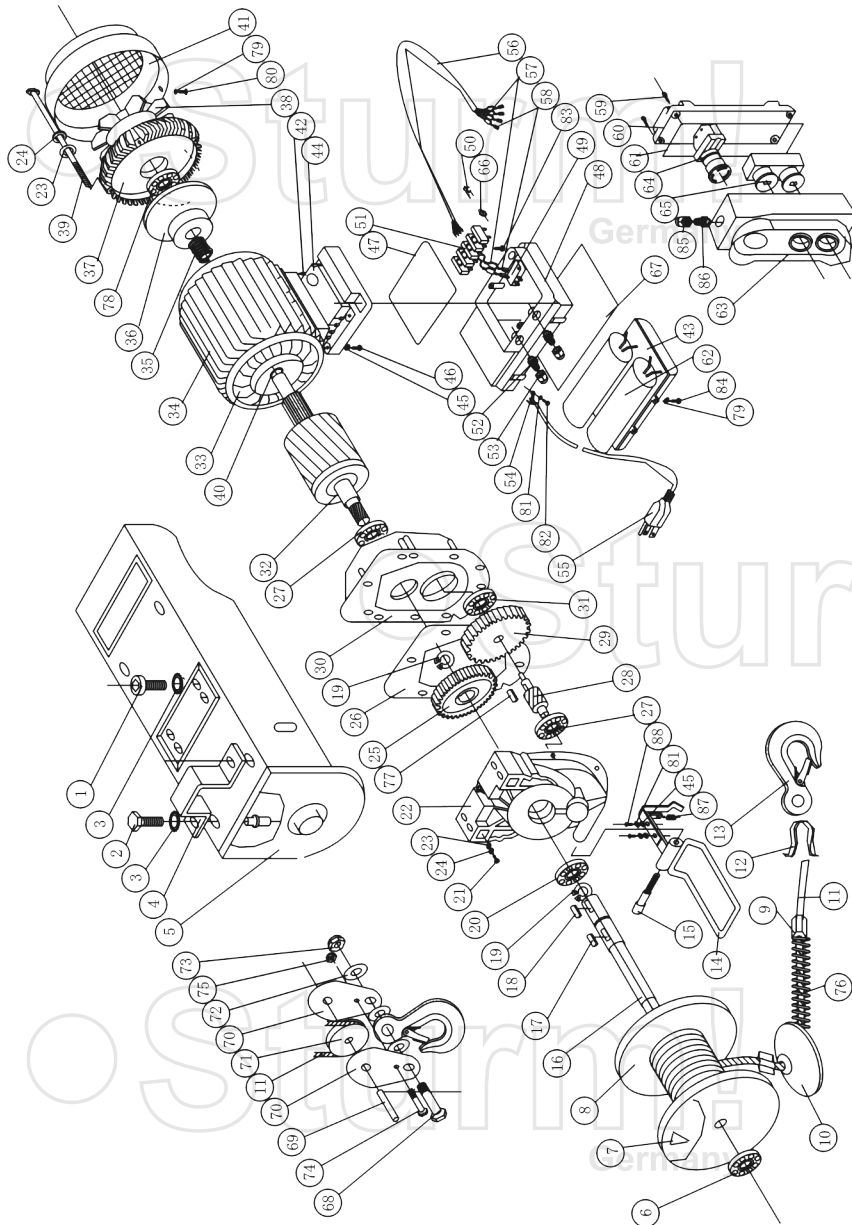


EH7280,EH72100



NO.	DESCRIPTION	NO.	DESCRIPTION
1	HEX SOCKET CAP HEAD SCREWS9	45	PLAIN WASHER Ø4
2	HEX HEAD BOLTSM12X25	46	CROSS RECESSED PAN HEAD SCREWS
3	LOCK WASHERS EXTERNAL TEETH	47	CONNECTING HOUSING SPACER
4	FIXING RING	48	CONNECTING HOUSING(SUBMIT)
5	FIXING RACK	49	MICROSWITCH
6	BEARING (60204)	50	SWITCH SHAFT
7	WEDGE	51	TERMINAL BLOCK
8	ROPE TUBE	52	WIRE CLIP
9	FASTENING SLEEVE OF ROPE	53	PRESSING TIGHT NUT
10	POURING WEIGHT	54	GROUDING SHEET
11	ROPE	55	THREE-CORE PLUG
12	SHRINK-RING OF ROPE	56	FOUR CORE CABLE
13	LIFT HOOK	57	PLUG-IN SHEET
14	SPACING RACK	58	SLEEVE OF PLUG-IN SHEET
15	CLAMP CONNECTER M8X45	59	CROSS RECESSED PAN HEAD TAPPING SCREWS
16	SHAFT OF ROPE TUBE	60	HANDLE BASE
17	SQUARE KEY 8X30	61	HANDLE SEALED LOOP
18	SQUARE KEY 8X20	62	CAPACITOR
19	CIRCLIP FOR SHAFT Ø 25	63	HANDLE COVER
20	BEARING (60205)	64	EMERGENCY STOP SWITCH
21	HEX SOCKET SCREW	65	POSITIVE AND NEGATIVE SWITCH
22	GEAR BOX	66	SLEEVE OF MICROSWITCH
23	PLAIN WASHER Ø 6	67	CONNECTING HOUSING SPACEE
24	SPRING WASHER Ø 6	68	HEXAGON HEAD BOLTSM12X30
25	GRADE 2 GEAR	69	CLAMP CONNECTER
26	SPACER	70	PULLEY CLAMP
27	BEARING (60202)	71	PULLEY
28	INTERMEDIATE SHAFT	72	PLAIN WASHER Ø10
29	GRADE 1 GEAR	73	NUT
30	FRONT COVER	74	HEXAGON HEAD BOLTS
31	BEARING (80201)	75	NUT
32	ROTOR	76	SPRING
33	STATOR	77	SQUARE KEY6X16
34	CHASSIS	78	BEARING (80203)
35	SPRING	79	PLAIN WASHER Ø3
36	BRAKE HOOP	80	CROSS RECESSED PAN HEAD SCREWS
37	GEAR COVER	81	LOCKWASHERSEXTERNAL TEETH
38	FAN BLADE	82	CROSS RECESSED PAN HEAD SCREWS
39	HEX HEAD BOLTS	83	CROSS RECESSED PAN HEAD TAPPING SCREWS
40	"O" WASHER	84	CROSS RECESSED PAN HEAD TAPPING SCREWS
41	FAN HOOD	85	WIRECLIP
42	HEX SOCKET SCREW	86	PRESSING TIGHT NUT
43	CONNECTING HOUSING	87	SPRING
44	CONNECTING HOUSING(DOWN)	88	CROSS RECESSED PAN HEAD SCREWS