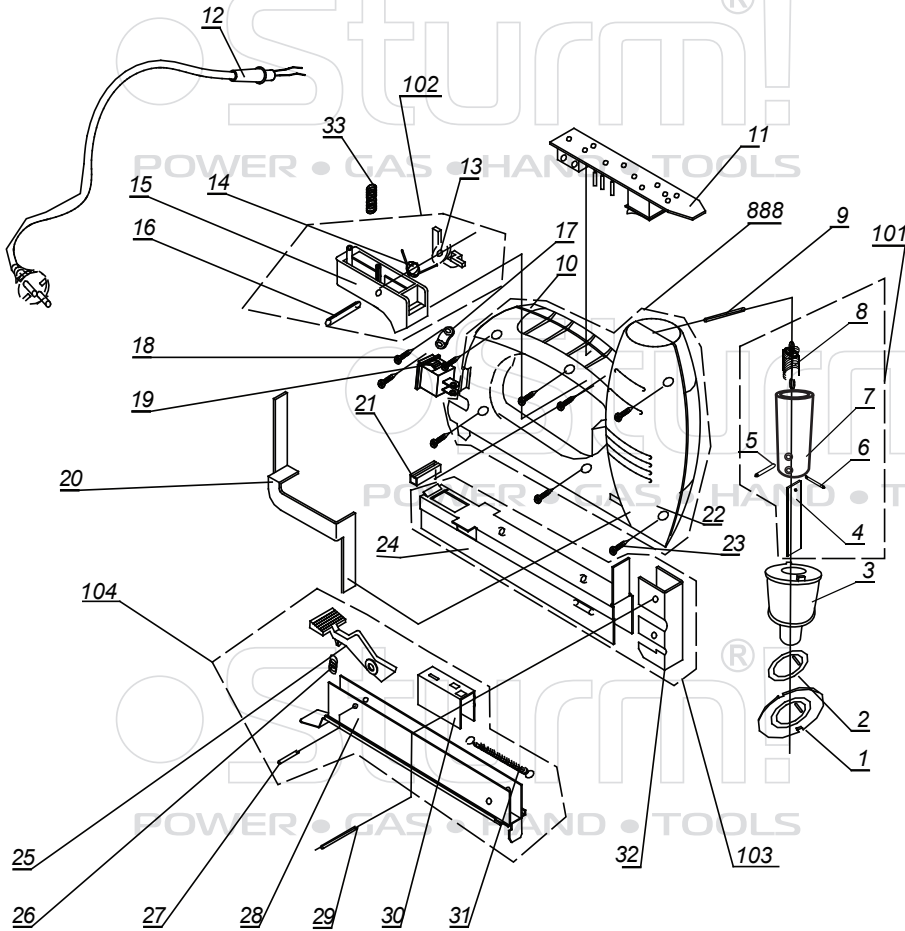


ET4516



NO.	DESCRIPTION	NO.	DESCRIPTION
1	DAMPENING CUP	20	SAFETY ARM
2	DAMPENING PAD	21	STEEL HOOP
3	LOOP	22	RIGHT HOUSING
4	STRIKING PLATE	23	SCREW
5	PIN	24	OUTER MAGAZINE CHANNEL
6	PIN	25	MAGAZINE LOCK
7	SOLENOID CORE	26	SPRING
8	TENSION SPRING	27	PIN
9	PIN	28	INNER MAGAZINE CHANNEL
10	LEFT HOUSING	29	PIN
11	PCB	30	NAIL PUSHER
12	CORD & PLUG	31	NAIL PUSHER SPRING
13	LOCKING TAB	32	NAIL CHANNEL
14	TWISTED REED	33	SWITCH TRIGGER SPRING
15	SWITCH TRIGGER	101	SOLENOID CORE ASSEMBLY(4+5+6+7+8)
16	PIN	102	SWITCH TRIGGER ASSEMBLY(13+14+15+16)
17	CORD CLAMP	103	OUTER MAGAZINE CHANNEL ASSEMBLY(24+32)
18	SCREW	104	INNER MAGAZINE CHANNEL ASSEMBLY(25+26+27+28+30+31)
19	SWITCH	888	HOUSING ASSEMBLY(10+22)

ST20130408