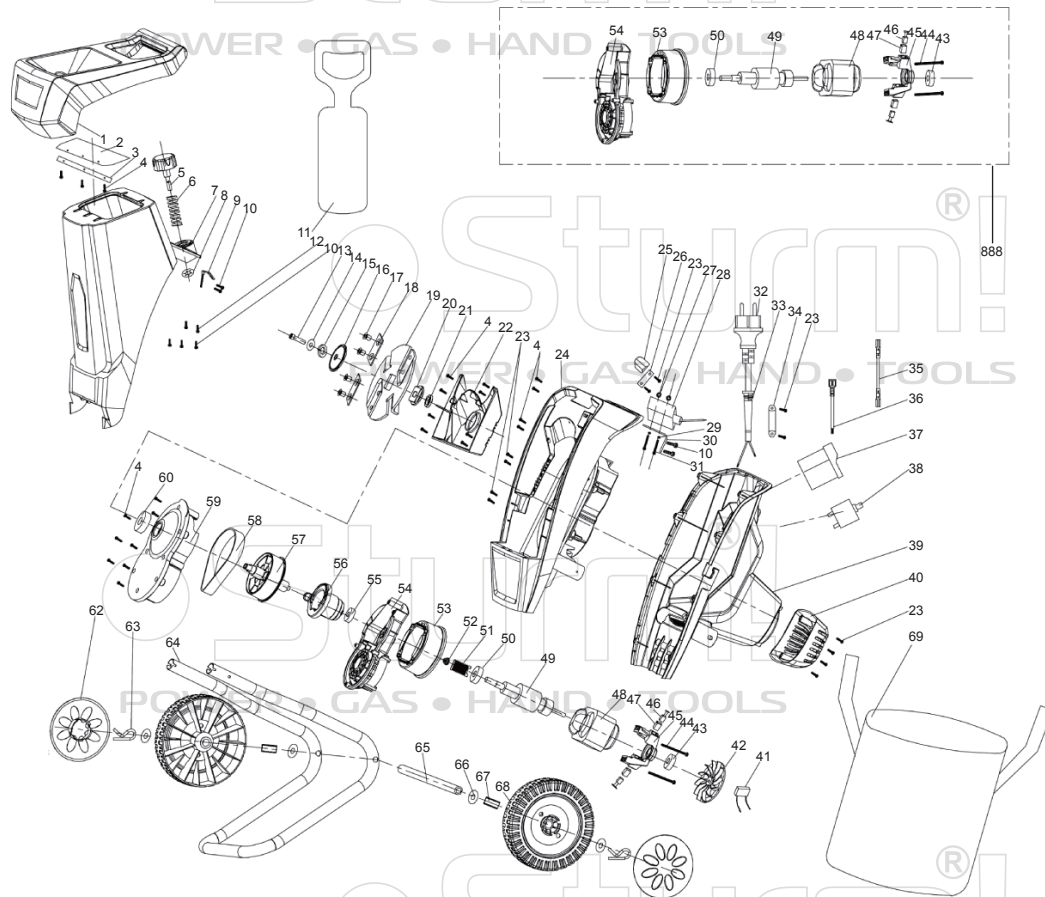


## GBE2400C



NO.	DESCRIPTION	NO.	DESCRIPTION
1	FEED HOPPER	35	CONNECTING LINE1
2	SPLASH GUARD	36	CONNECTING LINE2
3	PRESS BAR	37	MAGNETIC SWITCH
4	SCREW	38	OVERCURRENT PROTECTOR
5	KNOB	39	MOTOR CASING
6	SPRING	40	MOTOR HOUSING COVER
7	UP HOUSING	41	CAPACITOR
8	LOCK RING	42	FAN
9	SAFE PIN	43	BEARING 608Z
10	SCREW	44	SCREW
11	CLEAR MATERIAL ROD	45	MOTOR STENT (BACK)
12	"H" TYPE SCREW	46	CARBON BRUSH
13	INNER HEXAGON SCREW	48	STATOR
14	FLAT GASKET	49	ROTOR
15	SPRING WASHER 1	50	BEARING 6210Z
16	FLANGE	51	SMALLBELT WHEEL
17	SCREW	52	HEXNUT
18	BLADE	53	WIND SHIELD
19	CUTTER	54	GEARBOX COVER
20	TRANSMISSION PIECE	55	BEARING 629Z
21	AXIS GUIDE	56	ECCENTRIC WHEEL
22	BLOCK BOARD	57	BIG BELT WHEEL
23	SCREW	58	BELT
24	DOWN HOUSING	59	GEARBOX COVER
25	HOLD-DOWN NUT	60	BEARING 6003Z
26	NUT FIXED BOARD	62	WHEEL COVER
27	HEXNUT	64	SUPPORTING TUBE
28	SWITCH	65	CONNECTING ROD
29	SPRING WASHER 1	66	GASKET 2
30	SWITCH FIXED BOARD	67	AXLE SETS
31	SCREW	68	WHEEL
32	CORD	69	RUBBISH BAG
33	GUARD	888	MOTOR ASSEMBLY
34	CABLE CLAMP		