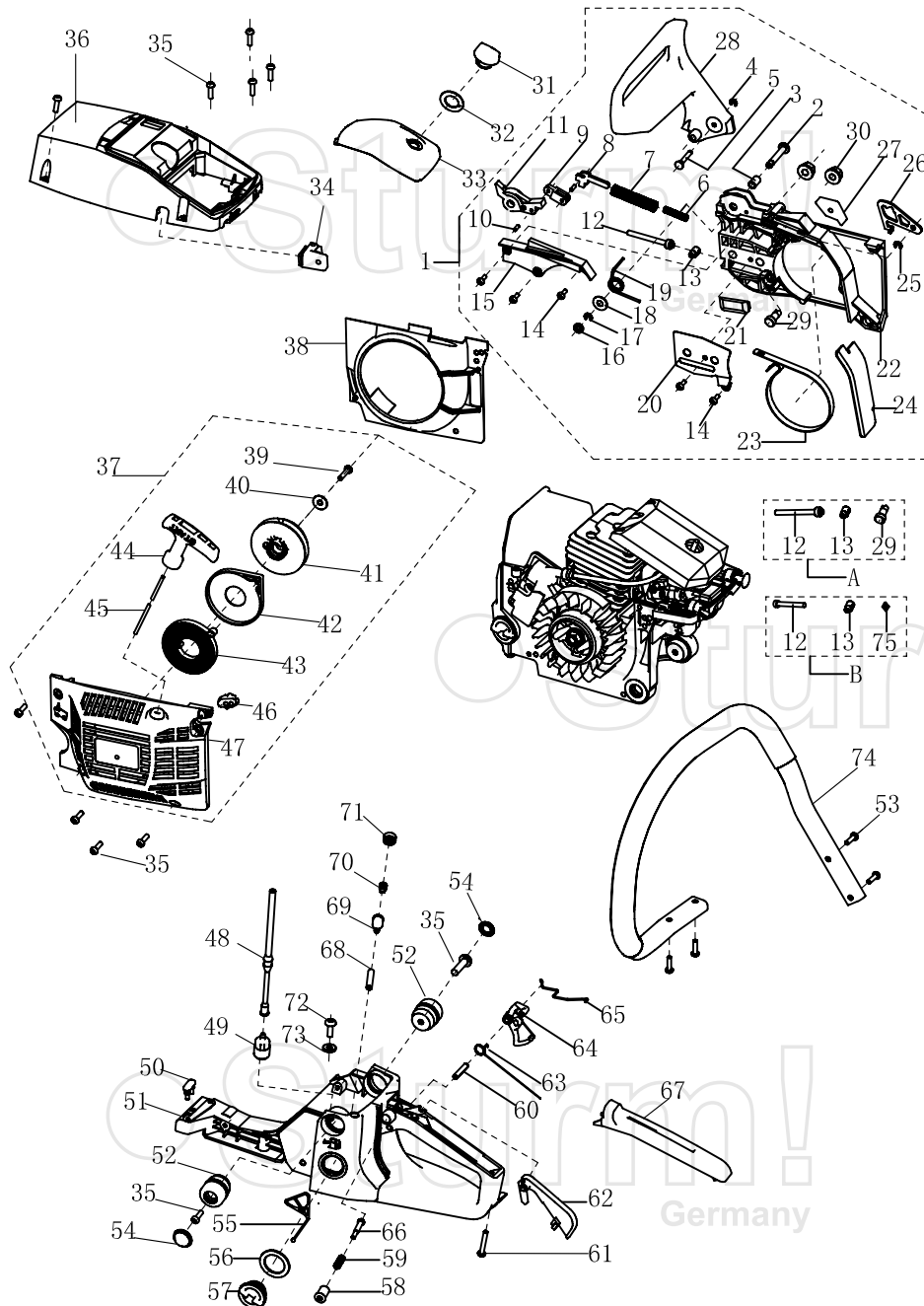
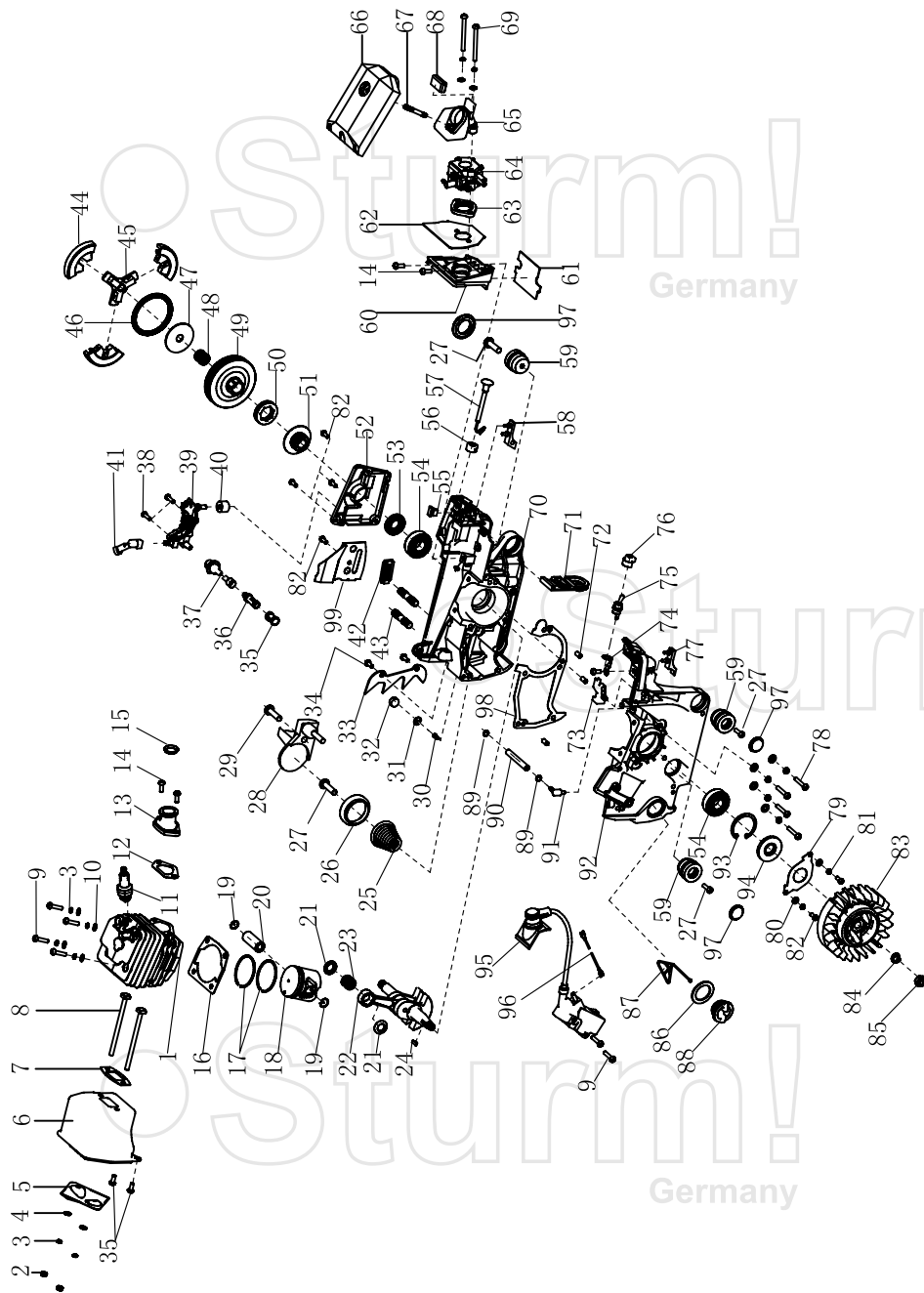


GC99456, GC99458



NO.	DESCRIPTION	NO.	DESCRIPTION
1	right cover assembly	39	screw M5X10
2	shield pin	40	washer 5
3	shield pin gland	41	start plate
4	ring 3	42	coil-spring gland
5	spacer pin	43	start coil-spring
6	secondary brake spring	44	start handle
7	brake spring	45	start stretching wire
8	brake control rod	46	LH sheathing
9	secondary pull-rod	47	start cover
10	pin 3x9	48	fuel tube
11	main level	49	petrol filter components
12	tightener screw	50	shock rubber
13	tension block	51	base
14	tapping screw ST4x8	52	shock rubber gland
15	brake spring cover plate	53	tapping screw ST5X16
16	shock rubber washer	54	dust cover
17	shield ring 5	55	anti-drop plate
18	washer 6	56	packing washing 20X30X2
19	brake torsion rod spring	57	oil cover
20	tensioner cover plate	58	button
21	chain guide dog	59	button spring
22	right cover	60	pin6X30
23	brake strap	61	tapping screw ST4X25
24	dust shield	62	trigger control rack
25	shield ring 4	63	trigger torsion rod spring
26	spacing shield	64	trigger
27	shock rubber cushioning	65	throttle
28	front damper	66	button shaft
29	tension gear	67	handle cover
30	nut M8	68	balancer oil tube
31	air filter lock nut	69	balancer body
32	lock nut washer 15X26X1	70	balancer rubber
33	air filter cover	71	balancer cover
34	idle adjusting guide set	72	sealing rubber
35	screw M5X16	73	tapping screw ST4X13
36	upper cover plate	74	front handle assembly
37	starter assembly	75	position block
38	bossing		

RU06091501



GC99456, GC99458

NO.	DESCRIPTION	NO.	DESCRIPTION	NO.	DESCRIPTION
1	cylinder body	34	screw M5X10	67	double-screw bolt GM5-M5X30
2	nut M5	35	oil filter screen	68	cushion of air intake socket
3	washer 5	36	oil filter	69	nut M5X50
4	washer 5	37	oil tube	70	right case body
5	silencer cover plate	38	screw M4X14	71	dust plate
6	silencer body	39	oil pump	72	pin 5X10
7	silencer sealing plate	40	sponge transition coil	73	shoe block 2
8	muffler connecting screw	41	nozzle	74	ground strip
9	screw M5X20	42	chain guide block	75	extinction switch
10	wahser 5	43	double-screw bolt AYM8-M8X26-8.8	76	extinction switch socket
11	spark plug NHSP LD L8RTF	44	shoe block	77	left shock block
12	air intake tube sealing plate	45	retainer	78	screw M5X25
13	air intake tube	46	clutch extension spring	79	oil seal damper
14	screw M5X12	47	clutch adjusting washer	80	washer 4
15	hold coil	48	needle bearing 12X15X14.5	81	washer 4
16	cylinder sealing plate	49	clutch shell	82	screw M4X10
17	piston ring	50	sprocket	83	flywheel
18	piston	51	turbine	84	washer 8
19	piston pin circlip	52	cover plate	85	nut M8X1
20	piston pin	53	oil seal 15X28X4.5	86	packing washing 20X30X2
21	needle bearing ring	54	bearing 6202 grade D 15X35X11	87	anti-drop plate
22	crankshaft connecting bar components	55	shock block 1	88	oil cover
23	needle bearing 11X15X12.5	56	throttle lever retaining bracket	89	suction tube circlip
24	semicircular key 3X3.5X10	57	throttle rod	90	suction tube 2.5X7X105
25	conical spreader spring	58	right shock block	91	suction jet
26	conical spreader base	59	cushion socket	92	left case body
27	tapping screw ST5X16	60	air intake support	93	ring35
28	chain catcher	61	backing board	94	oil seal 15X35X4.5
29	screw M5X16	62	sealing plate of air intake support	95	igniter
30	aeration jet	63	air intake flange	96	extinction conductor
31	aeration jet circlip	64	carburetor	97	dust cover
32	sponge transition block	65	air intake socket	98	case body sealing plate
33	bumper spikes	66	air filter	99	damper

RU06091501