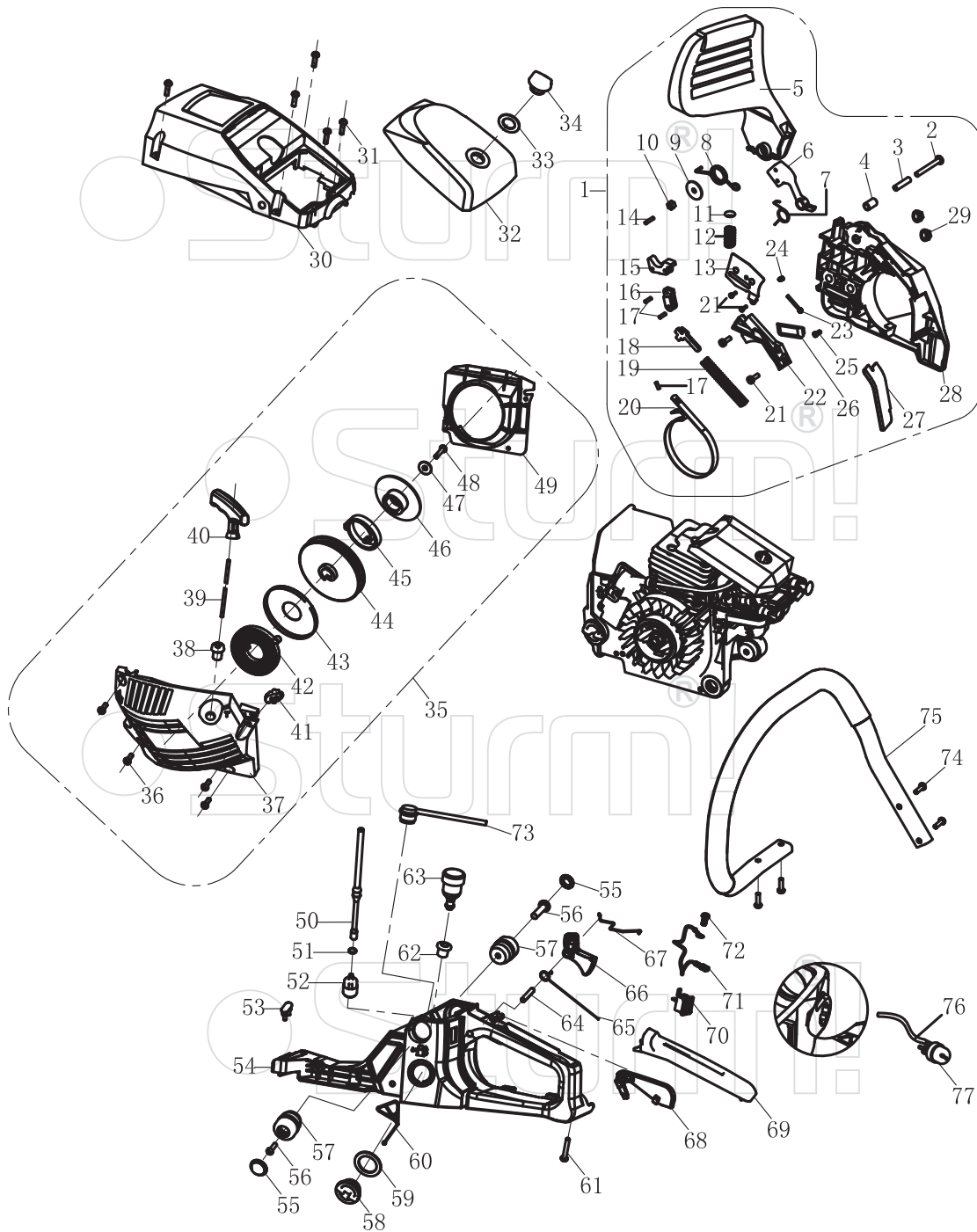
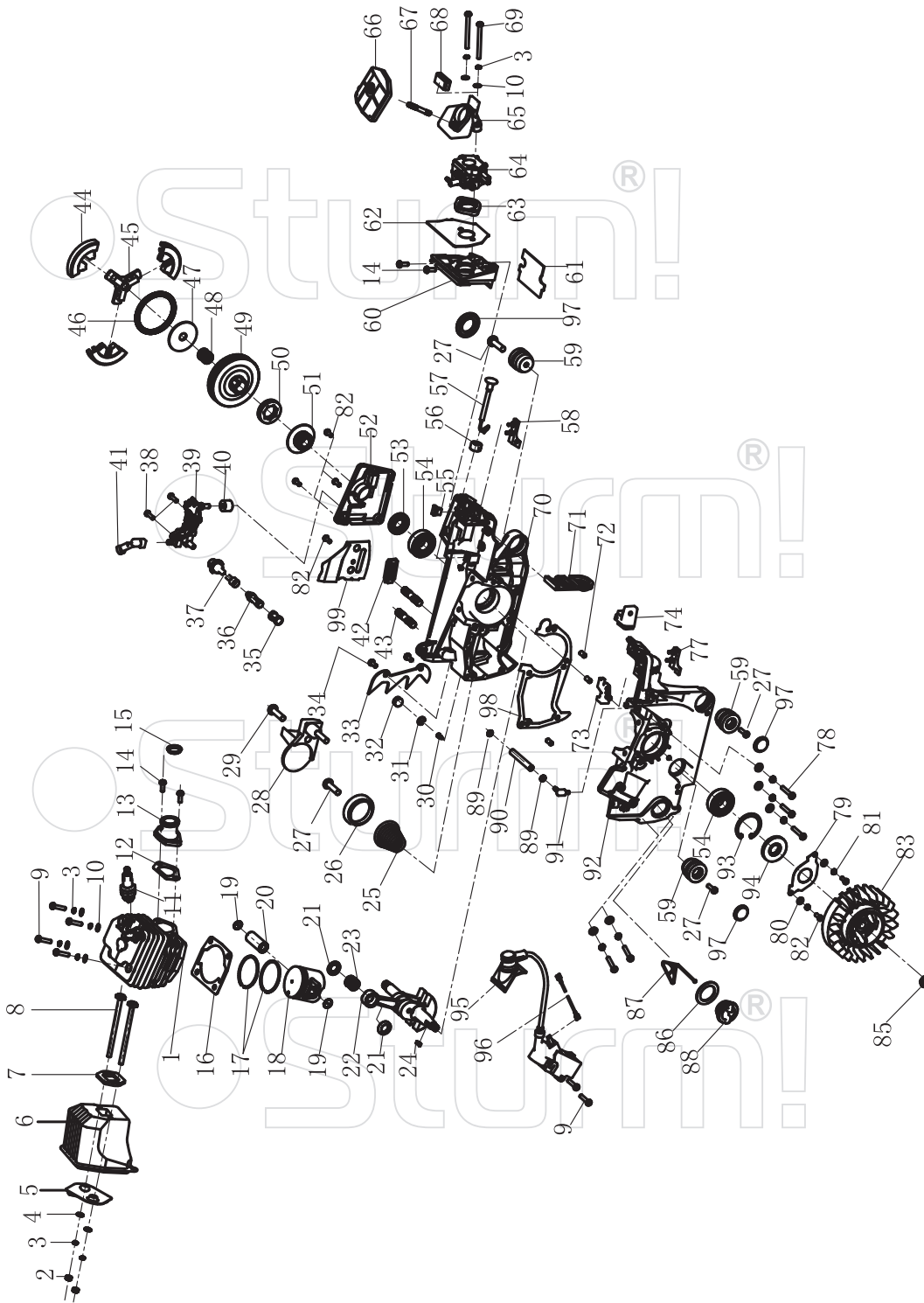


GC99466M



| NO | DESCRIPTION | NO | DESCRIPTION |
|----|-----------------------------|----|---------------------------------|
| 1 | Clutch cover assembly | 40 | start grip |
| 2 | Screw M5×40 | 41 | LH sheathing |
| 3 | pin gland 5×6.3×30 | 42 | start coil spring |
| 4 | heavy brock gland 6.3×9×15 | 43 | coil spring cover |
| 5 | front damper | 44 | start plate |
| 6 | heavy brock | 45 | easy start-coil spring |
| 7 | heavy brock spring | 46 | easy start-coil spring cover |
| 8 | brake torsion rod spring | 47 | plate washer 5 |
| 9 | washer 5.2×23×1.2 | 48 | tapping screw ST4.8×14 |
| 10 | lock- nut M5 | 49 | bossing |
| 11 | spring base | 50 | fuel tube |
| 12 | front guard spring | 51 | circlip |
| 13 | tensioner cover plate | 52 | gasoline strainer petrol filter |
| 14 | pin 3×14 | 53 | shock-reducing rubber |
| 15 | main level | 54 | base |
| 16 | secondary pull-rod | 55 | dust cover |
| 17 | pin 3×9 | 56 | screw ST5×16 |
| 18 | break control rod | 57 | shock rubber gland |
| 19 | brake spring | 58 | oil cover |
| 20 | break strap | 59 | packing washing 23×34×1.7 |
| 21 | tapping screw ST4.2X9.5 | 60 | anti-drop plate |
| 22 | break spring cover plate | 61 | tapping screw ST4×25 |
| 23 | tightener screw | 62 | balancer seat |
| 24 | tension block | 63 | balancer body |
| 25 | tension gear | 64 | pin6×30 |
| 26 | chain guide block | 65 | trigger torsion rod spring |
| 27 | dust shield | 66 | trigger |
| 28 | clutch cover | 67 | throttle |
| 29 | nut M8 | 68 | trigger control rack |
| 30 | upper cover plate | 69 | handle cover |
| 31 | screw M5×16 | 70 | extinction switch |
| 32 | air filter cover | 71 | earth wire |
| 33 | lock nut washer 15×26×1 | 72 | screw ST5×16 |
| 34 | air filter lock nut | 73 | petrol return pipe |
| 35 | starter assembly | 74 | tapping screw ST5×16 |
| 36 | screw M5×16 | 75 | front handle assembly |
| 37 | bossing | 76 | pump tube |
| 38 | sheach | 77 | primer bulb |
| 39 | start sterching wire3.5×900 | | |



GC99466M

| NO | DESCRIPTION | NO | DESCRIPTION |
|----|--------------------------------------|----|-------------------------------------|
| 1 | cylinder body | 49 | clutch shell |
| 2 | nut M5 | 50 | sprocket |
| 3 | washer 5 | 51 | turbine |
| 4 | washer 5 | 52 | cover plate |
| 5 | silencer cover plate | 53 | oil seal 15×28×4.5 |
| 6 | silencer body | 54 | bearing 6202 grade D 15×35×11 |
| 7 | silencer sealing plate | 55 | shock block 1 |
| 8 | muffler connecting screw | 56 | throttle lever retaining bracket |
| 9 | screw M5×20 | 57 | throttle rod |
| 10 | wahser 5 | 58 | right shock block |
| 11 | spark plug NHSP LD L8RTF | 59 | cushion socket |
| 12 | air intake tube sealing plate | 60 | air intake support |
| 13 | air intake tube | 61 | backing board |
| 14 | screw M5×12 | 62 | sealing plate of air intake support |
| 15 | hold coil | 63 | air intake flange |
| 16 | cylinder sealing plate | 64 | carburetor |
| 17 | piston ring | 65 | air intake socket |
| 18 | piston | 66 | air filter |
| 19 | piston pin circlip | 67 | double-screw bolt GM5-M5×30 |
| 20 | piston pin | 68 | cushion of air intake socket |
| 21 | needle bearing ring | 69 | nut M5×50 |
| 22 | crankshaft connecting bar components | 70 | right case body |
| 23 | needle bearing 11×15×12.5 | 71 | dust plate |
| 24 | semicircular key 3×3.5×10 | 72 | pin 5×10 |
| 25 | conical spreader spring | 73 | shoe block 2 |
| 26 | conical spreader base | 74 | idle adjusting guide set |
| 27 | tapping screw ST5×16 | 77 | left shock block |
| 28 | chain catcher | 78 | screw M5×25 |
| 29 | screw M5×16 | 79 | oil seal damper |
| 30 | aeration jet | 80 | washer 4 |
| 31 | aeration jet circlip | 81 | washer 4 |
| 32 | sponge transition block | 82 | screw M4×10 |
| 33 | bumper spikes | 83 | flywheel |
| 34 | screw M5×10 | 85 | nut M8×1 |
| 35 | oil filter screen | 86 | packing washing 20×30×2 |
| 36 | oil filter | 87 | anti-drop plate |
| 37 | oil tube | 88 | oil cover |
| 38 | screw M4×14 | 89 | suction tube circlip |
| 39 | oil pump | 90 | suction tube 2.5×7×105 |
| 40 | sponge transition coil | 91 | suction jet |
| 41 | nozzle | 92 | left case body |
| 42 | chain guide block | 93 | ring35 |
| 43 | double-screw bolt AYM8-M8X26-8.8 | 94 | oil seal 15×35×4.5 |
| 44 | shoe block | 95 | igniter |
| 45 | retainer | 96 | extinction conductor |
| 46 | clutch extension spring | 97 | dust cover |
| 47 | clutch adjusting washer | 98 | case body sealing plate |
| 48 | needle bearing 12×15×14.5 | 99 | damper |