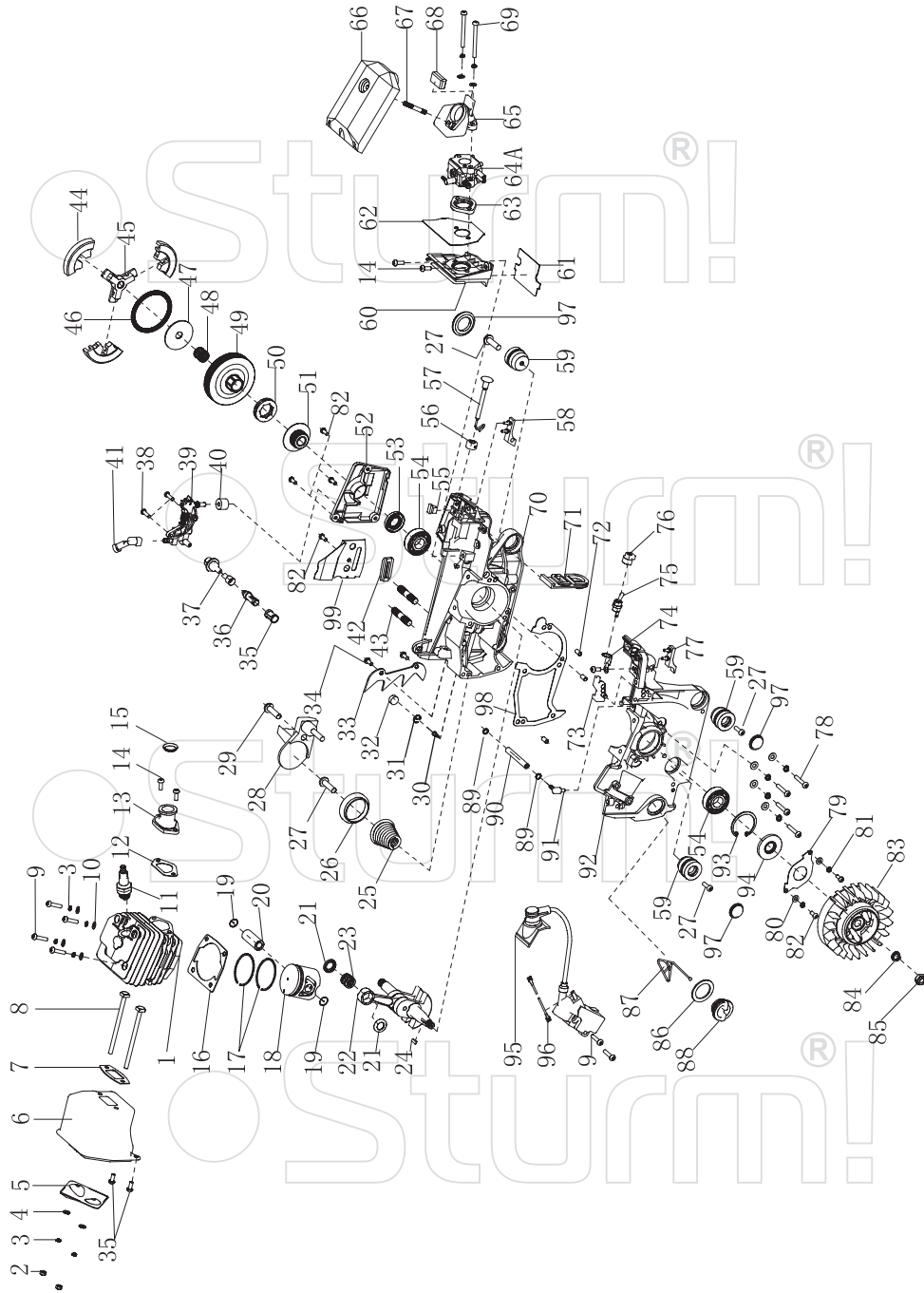


## GC99466, GC99468

NO.	DESCRIPTION	NO.	DESCRIPTION
1	RIGHT COVER ASSEMBLY	41	START HANDLE
2	SCREW M5X36	42	START STRETCHING WIRE
3	SHIELD PIPE	43	LH SHEATHING
4	PIPE	44	STARTER COVER
5	PIN 3 X 14	45	SHOCK RUBBER
6	TENSION BLOCK	46	BASE
7	TIGHTENER SCREW	47	SHOCK RUBBER GLAND
8	TENSIONER COVER PLATE	48	TAPPING SCREW
9	TAPPING SCREW ST4.2 X 9.5	49	DUST COVER
10	FRONT DAMPER	50	ANTI-DROP PLATE
11	BRAKE TORSION ROD SPRING	51	PACKING WASHER
12	WASHER 5.2X20X1.2	52	PETROL COVER
13	NUT M5	53	DUST SHIELD
14	SPRING BASE	56	FUEL TUBE
15	FRONT DAMPER SPRING	57	PETROL FILTER
16	MAIN LEVEL	58	SCREW
17	SECONDARY PULL-ROD	59	WASHER
18	PIN 3X9	60	BALANCER CORER
19	BRAKE CONTROL ROD	61	BALANCER RUBBER
20	BRAKE SPRING	62	BALANCER BODY
21	BRAKE STRAP	63	BALANCER ROOT
22	TAPPING SCREW ST4.2X12	64	DUST COVER
23	BRAKE SPRING COVER PLATE	65	TAPPING SCREW
24	POSITION BLOCK	66	CUSHION SOCKET
25	CHAIN GUIDE BLOCK	67	THROTTLE
26	RIGHT COVER	68	TRIGGER
27	NUT M8	69	SPRING
28	AIR FILTER LOCK NUT	70	PIN
29	LOCK NUT WASHER 15X26X1	71	HANDLE COVER
30	AIR FILTER COVER	72	TRIGGER CONTROL RACK
31	IDLE ADJUSTING GUIDE SET	73	TAPPING SCREW
32	SCREW M5X16	74	HANDLE
33	UPPER COVER PLATE	75	TAPPING SCREW
34	STARTER ASSEMBLY	100	PUMP TUBE
35	GUIDE FLOW COVER	101	PRIMER BULB
36	SCREW M5X10	102	SCAVENGE TUBE
37	WASHER5	103	OIL TUBE TIE-IN
38	STARTER PALTE	104	OIL TUBE CLIP
39	COIL SPRING GLAND	105	SCAVENGE NOZZLE
40	START COIL SPRING		

## ENGINE FOR GC99466, GC99468



NO.	DESCRIPTION	NO.	DESCRIPTION
1	CYLINDER	51	WORM
2	NUT M5	52	COVER PLATE
3	WASHER5	53	OIL SEAL 15X28X4.5
4	WASHER5	54	BEARING 6202D GRADE 15X35X11
5	MUFFLER COVER PLATE	55	CUSHION BLOCK
6	MUFFLER BODY	56	THROTTLE ROD FIXATION ROOT
7	MUFFLER SEALING PLATE	57	THROTTLE ROD
8	MUFFLER CONNECTING SCREW	58	RIGHT SHOCK BLOCK
9	SCREW M5X20	59	SHOCK SEAT
10	WASHER5	60	AIR INTAKE TUBE SUPPORT
11	SPARK PLUG	61	TIE PLATE
12	AIR INTAKE TUBE SEALING PLATE	62	SEALING PLATE OF AIR INTAKE SUPPORT
13	AIR INTAKE TUBE	63	AIR INTAKE TUBE FLANGE
14	SCREW M5X12	64A	CARBURETOR
15	HOLD COIL	65	AIR INTAKE SOCKET
16	CYLINDER SEALING PLATE	66	AIR FILTER
17	PISTON RING	67	DOUBLE-SCREW BOLT
18	PISTON	68	CUSHION OF AIR INTAKE SOCKET
19	PISTON PIN CIRCLIP	69	SCREW M5X50
20	PISTON PIN	70	LEFT CASE
21	NEEDLE BEARING RING	71	DUST PLATE
22	CRANK SHAFT COMPONENTS	72	PIN 5X10
23	NEEDLE BEARING 11X15X12.5	73	SHOCK BLOCK2
24	SEMICIRCULAR KEY 3X3.5X10	74	GROUND STRIP
25	CONICAL SPRING BASE	75	FLAMEOUT SWITCH
26	CONICAL SPREADER BASE	76	FLAMEOUT SWITCH SOCKET
27	TAPPING SCREW ST5X16	77	LEFT SHOCK BLOCK
28	CHAIN SHIELD	78	SCREW M5X25
29	SCREW M5X16	79	OIL SHIELD
30	AERATION JET	80	WASHER4
31	AERATION JET CIRCLIP	81	WASHER4
32	SPONGE TRANSITION BLOCK	82	SCREW M4X10
33	PINION RACK	83	FLYWHEEL
34	SCREW M5X10	84	WASHER8
35	OIL FILTER SCREEN	85	NUT M8X1
36	OIL FILTER	86	SEALING WASHER20X30X2
37	OIL TUBE	87	ANTI-DROP PLATE
38	SCREW M4X14	88	OIL COVER
39	OIL PUMP	89	SUCTION TUBE CIRCLIP
40	SPONGE TRANSITION COIL	90	SUCTION TUBE 2.5X7X10.5
41	NOZZLE	91	SUCTION JET
42	CHAIN GUIDE BLOCK	92	LEFT CASE
43	DOUBLE-SCREW BOLT	93	SHIELD RING35
44	SHOE BLOCK	94	OIL SEAL 15X35X4.5
45	RETAINER	95	IGNITER
46	CLUTCH SPRING	96	EXTINCTION CONDUCTOR
47	CLUTCH ADJUSTING WASHER	97	DUST COVER
48	NEEDLE BEARING 12X15X14.5	98	CASE BODY SEALING PLATE
49	CLUTCH SHELL	99	DAMPER
50	SPROCKET		