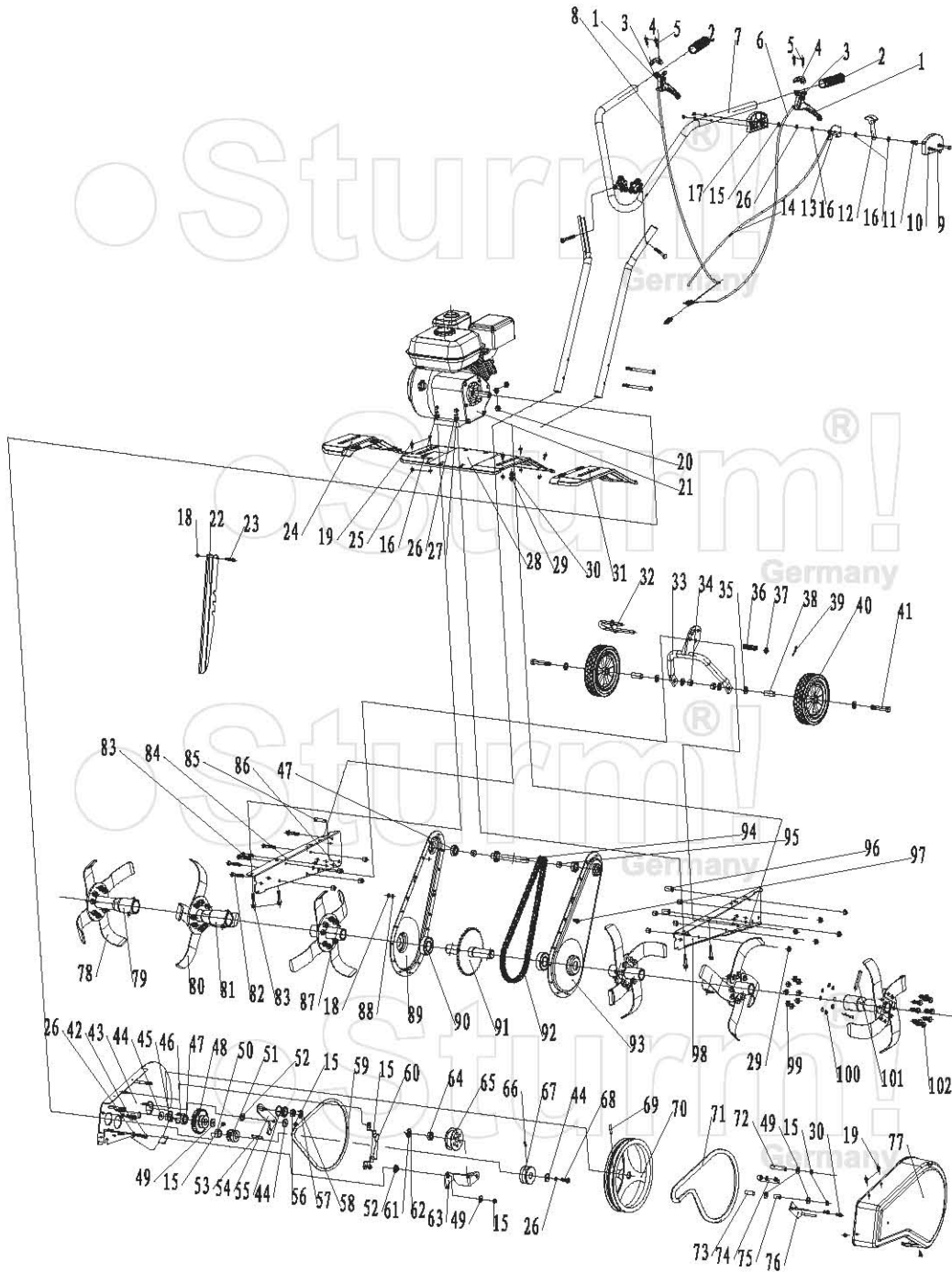


# GK8355

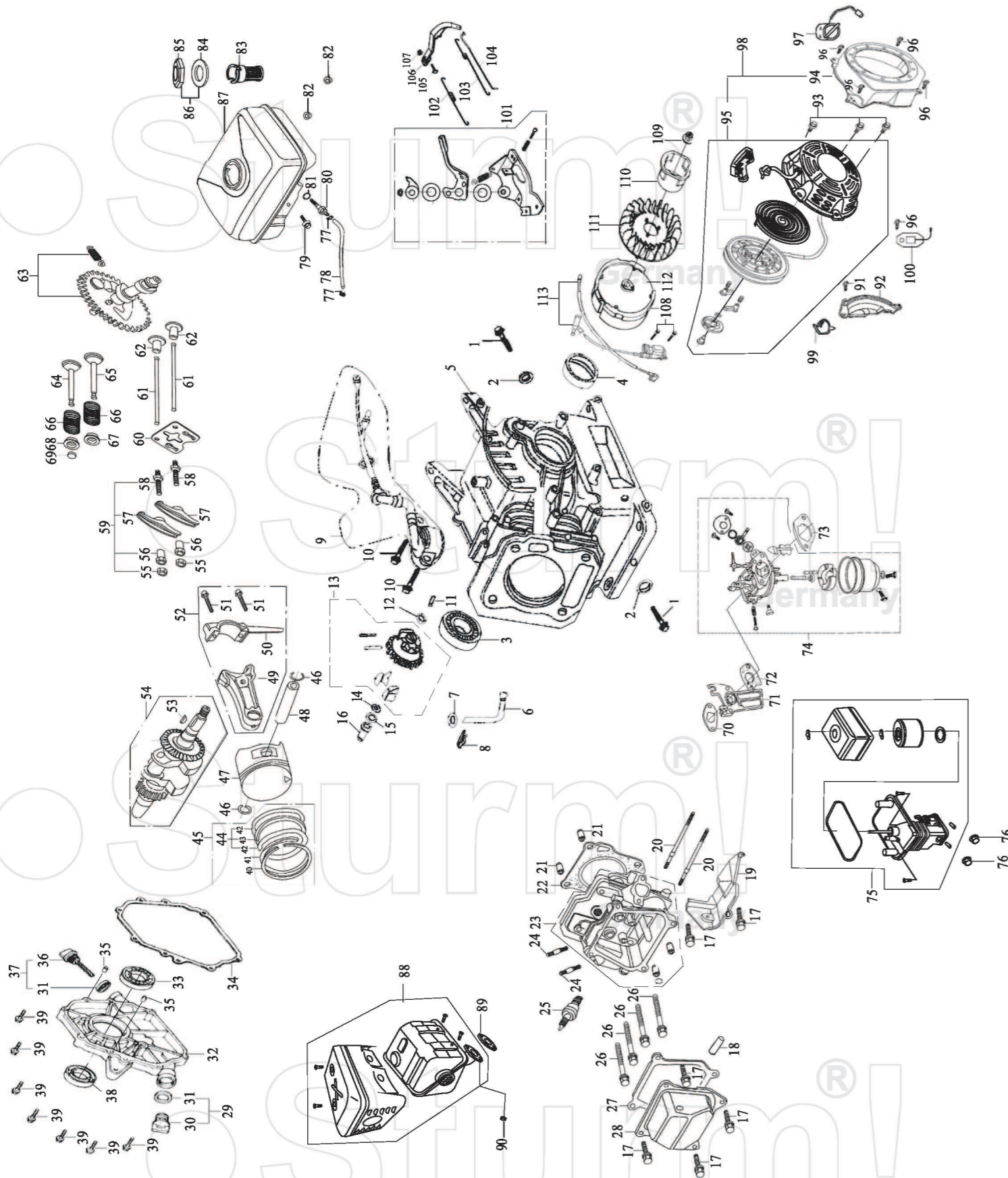


| NO. | DESCRIPTION                     | NO. | DESCRIPTION           | NO. | DESCRIPTION                    |
|-----|---------------------------------|-----|-----------------------|-----|--------------------------------|
| 1   | CLUTCH SWITCH                   | 35  | WASHER                | 69  | PIN                            |
| 2   | STEER COVER                     | 36  | SPRING                | 70  | BIG BELT WHEEL                 |
| 3   | DOWN CLUTCH SWITCH HOLDER       | 37  | WASHER                | 71  | FORWARD BELT                   |
| 4   | UPPER CLUTCH SWITCH HOLDER      | 38  | BUSH                  | 72  | BACK BELT POSITION BUSH        |
| 5   | SCREW                           | 39  | PIN                   | 73  | FRONT RIGHT BELT POSITION BUSH |
| 6   | REVERSE WIRE                    | 40  | WHEEL                 | 74  | POSITION BUSH                  |
| 7   | STEER                           | 41  | BOLT                  | 75  | FRONT LEFT BELT POSITION BUSH  |
| 8   | FORWARD WIRE                    | 42  | BOLT                  | 76  | BELT POSITION BOARD            |
| 9   | BOLT                            | 43  | FIX BOARD             | 77  | BELT COVER                     |
| 10  | RIGHT THROTTLE SWITCH BOX COVER | 44  | WASHER                | 78  | LEFT BLADE                     |
| 11  | BOLT                            | 45  | GEAR TENSION BUSH     | 79  | LEFT BLADE HOLDER              |
| 12  | THROTTLE SWITCH 2               | 46  | CIRCLIP               | 80  | RIGHT BLADE                    |
| 13  | THROTTLE SWITCH 1               | 47  | BEARING               | 81  | RIGHT BLADE HOLDER             |
| 14  | THROTTLE WIRE                   | 48  | GEAR                  | 82  | BOLT                           |
| 15  | ANTI-LOOSE NUT                  | 49  | WASHER                | 83  | BOLT                           |
| 16  | WASHER                          | 50  | BEARING               | 84  | RIGHT BASE                     |
| 17  | LEFT THROTTLE SWITCH BOX COVER  | 51  | PINION                | 85  | PIN                            |
| 18  | ANTI-LOOSE NUT                  | 52  | TENSION BUSH          | 86  | CHAIN BOX POSITION BUSH        |
| 19  | BOLT                            | 53  | KEY                   | 87  | PIN                            |
| 20  | FIX BOARD POSITION BUSH         | 54  | REVERSE TENSION ARM   | 88  | WASHER                         |
| 21  | ENGINE                          | 55  | REVERSE TENSION WHEEL | 89  | RIGHT CHAIN BOX                |
| 22  | DEPTH SKID                      | 56  | BEARING               | 90  | BEARING                        |
| 23  | BOLT                            | 57  | CIRCLIP               | 91  | BIG SPROCKET                   |
| 24  | LEFT LENGTHEN BOARD             | 58  | CKRCLIP               | 92  | CHAIN                          |
| 25  | ANTI-LOOSE NUT                  | 59  | REVERSE BELT          | 93  | LEFT CHAIN BOX                 |
| 26  | SPRING WASHER                   | 60  | REVERSE BELT GUARD    | 94  | SMALL SPROCKET                 |
| 27  | NUT                             | 61  | CIRCLIP               | 95  | SMALL SPROCKET POSITION BUSH   |
| 28  | FENDER                          | 62  | CIRCLIP               | 96  | BASE POSITION BUSH             |
| 29  | ANTI-LOOSE NUT                  | 63  | FORWARD TENSION ARM   | 97  | BOLT                           |
| 30  | BOLT                            | 64  | BEARING               | 98  | LEFT BASE                      |
| 31  | RIGHT LENGTHEN BOARD            | 65  | FORWARD TENSION WHEEL | 99  | NUT                            |
| 32  | LOCK HANDLE                     | 66  | SCREW                 | 100 | WASHER                         |
| 33  | WHEEL BRACKET                   | 67  | FORWARD BELT WHEEL    | 101 | PIN                            |
| 34  | ANTI-LOOSE NUT                  | 68  | NUT                   | 102 | BOLT                           |

RU090622-1



# Engine for GK8355



| NO. | DESCRIPTION                  | NO. | DESCRIPTION                  | NO. | DESCRIPTION                   |
|-----|------------------------------|-----|------------------------------|-----|-------------------------------|
| 1   | OIL DRAIN PLUG               | 39  | M8×32 BOLT                   | 77  | PIPE CLAMP                    |
| 2   | WASHER                       | 40  | PISTON RING ( I )            | 78  | OUTLET PIPE                   |
| 3   | BEARING 6205                 | 41  | PISTON RING ( II )           | 79  | M6×22 BOLT                    |
| 4   | CRANKSHAFT OIL SEAL          | 42  | SIDE RAIL                    | 80  | CONNECTOR                     |
| 5   | CRANKCASE                    | 43  | EXPANDER                     | 81  | PACKING RING                  |
| 6   | REGULATING SWAY BAR          | 44  | SCRAPER RING SET             | 82  | M6 NUT                        |
| 7   | WASHER                       | 45  | PISTON RING ASSEMBLY         | 83  | FILTER CUP                    |
| 8   | SPLIT PIN                    | 46  | PISTON PIN CLIP              | 84  | PACKING RING                  |
| 9   | OIL SENSOR                   | 47  | PISTON                       | 85  | FUEL CAP                      |
| 10  | M6×14 BOLT                   | 48  | PISTON PIN                   | 86  | FUEL CAP WITH ASSEMBLY        |
| 11  | REGULATING SHAFT             | 49  | SHANK                        | 87  | FUEL TANK                     |
| 12  | WASHER                       | 50  | CONNECTING ROD COVER         | 88  | EXHAUST MUFFLER               |
| 13  | REGULATOR GEAR ASSEMBLY      | 51  | BOLT                         | 89  | EXHAUST GASKET                |
| 14  | SNAP RING                    | 52  | CONNECTING ROD ASSEMBLY      | 90  | M6 NUT                        |
| 15  | WASHER                       | 53  | WOODRUFF KEY                 | 91  | M6×22 BOLT                    |
| 16  | SLEEVE                       | 54  | CRANKSHAFT ASSEMBLY          | 92  | CRANKCASE SIDE PLATE ASSEMBLY |
| 17  | M6×12 BOLT                   | 55  | LOCK NUT                     | 93  | M6×8 BOLT                     |
| 18  | AIR DUCT                     | 56  | SLEEVE                       | 94  | FAN HOOD ASSEMBLY             |
| 19  | WIND COVER                   | 57  | VALVE ROCKER                 | 95  | RECOIL STARTER                |
| 20  | M6×113 BOLT                  | 58  | ADJUSTING BOLT FOR VALVE GAP | 96  | M6×12 BOLT                    |
| 21  | SET PIN $\phi$ 10×16         | 59  | VALVE ROCKER ASSEMBLY        | 97  | ENGINE SWITCH                 |
| 22  | CYLINDER HEAD GASKET         | 60  | PUSHER GUIDE                 | 98  | RECOIL STARTER ASSEMBLY       |
| 23  | CYLINDER HEAD ASSEMBLY       | 61  | PUSHER                       | 99  | PLASTIC CLIP                  |
| 24  | M8×34 BOLT                   | 62  | TAPPET                       | 100 | DIODE                         |
| 25  | SPARK PLUG                   | 63  | CAMSHAFT ASSEMBLY            | 101 | REGULATING FRAME ASSEMBLY     |
| 26  | BOLT                         | 64  | EXHAUST VALVE                | 102 | BACK SPRING                   |
| 27  | CYLINDER HEAD COVER GASKET   | 65  | INTAKE VALVE                 | 103 | REGULATING SPRING             |
| 28  | CYLINDER HEAD COVER ASSEMBLY | 66  | VALVE SPRING                 | 104 | PULLING ROD                   |
| 29  | OIL PLUG ASSEMBLY            | 67  | INTAKE VALVE SPRING SEAT     | 105 | LOCK BOLT                     |
| 30  | OIL PLUG                     | 68  | EXHAUST VALVE SPRING SEAT    | 106 | REGULATING ARM                |
| 31  | SEAL                         | 69  | CAP                          | 107 | M6 NUT                        |
| 32  | CRANKCASE COVER              | 70  | INLET GASKET                 | 108 | M6×25 SCREW                   |
| 33  | BEARING 6205                 | 71  | CONNECTING BLOCK             | 109 | M14×1.5 NUT                   |
| 34  | CRANKCASE GASKET             | 72  | CARBURETOR GASKET            | 110 | STARTING FLANGE               |
| 35  | SET PIN                      | 73  | AIR CLEANER GASKET           | 111 | FLYWHEEL FAN                  |
| 36  | OIL DIPSTICK                 | 74  | CARBURETOR ASSEMBLY          | 112 | FLYWHEEL                      |
| 37  | OIL DIPSTICK ASSEMBLY        | 75  | AIR CLEANER                  | 113 | IGNITION COIL ASSEMBLY        |
| 38  | CRANKSHAFT OIL SEAL          | 76  | M6 NUT                       |     |                               |