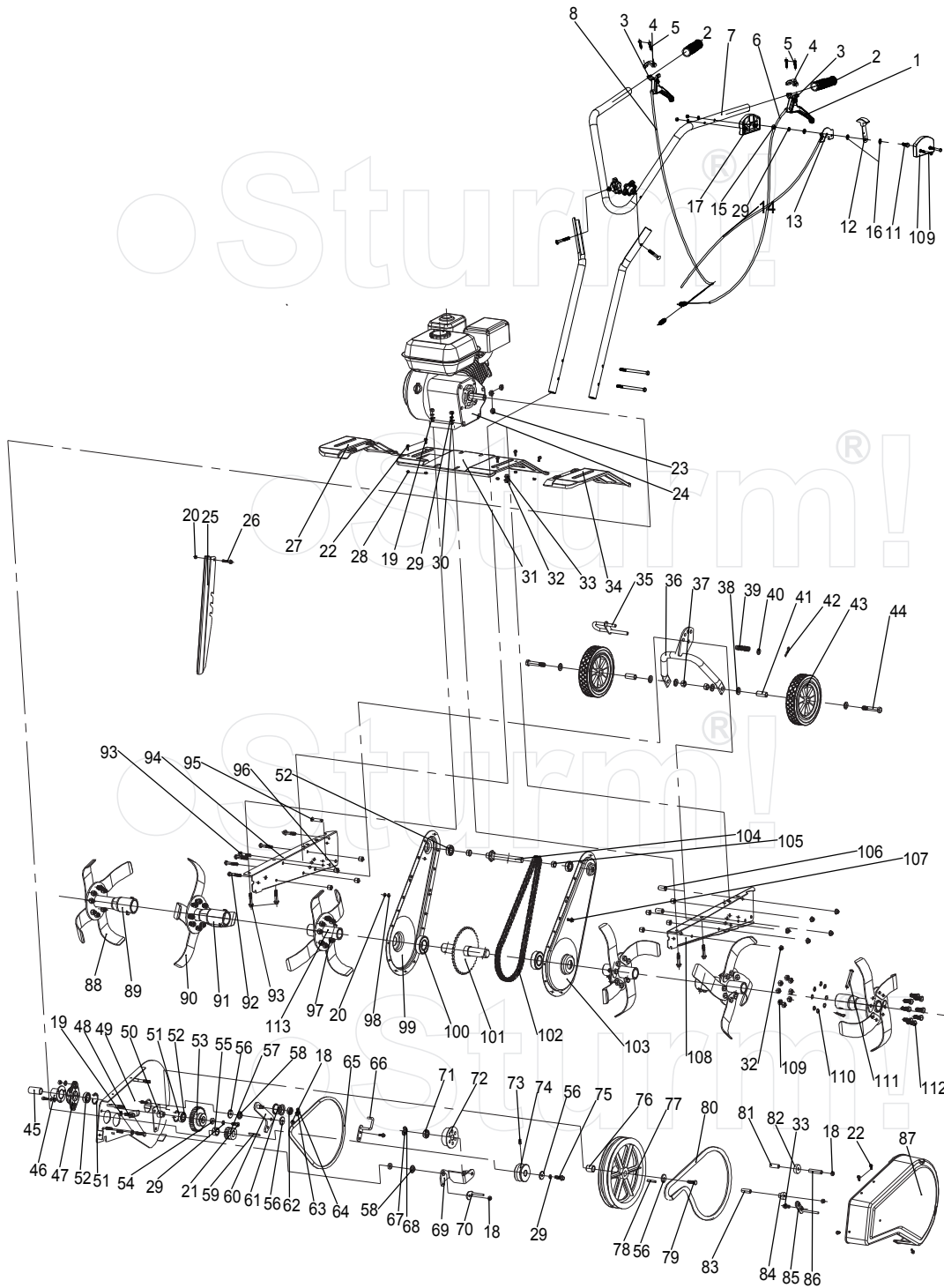


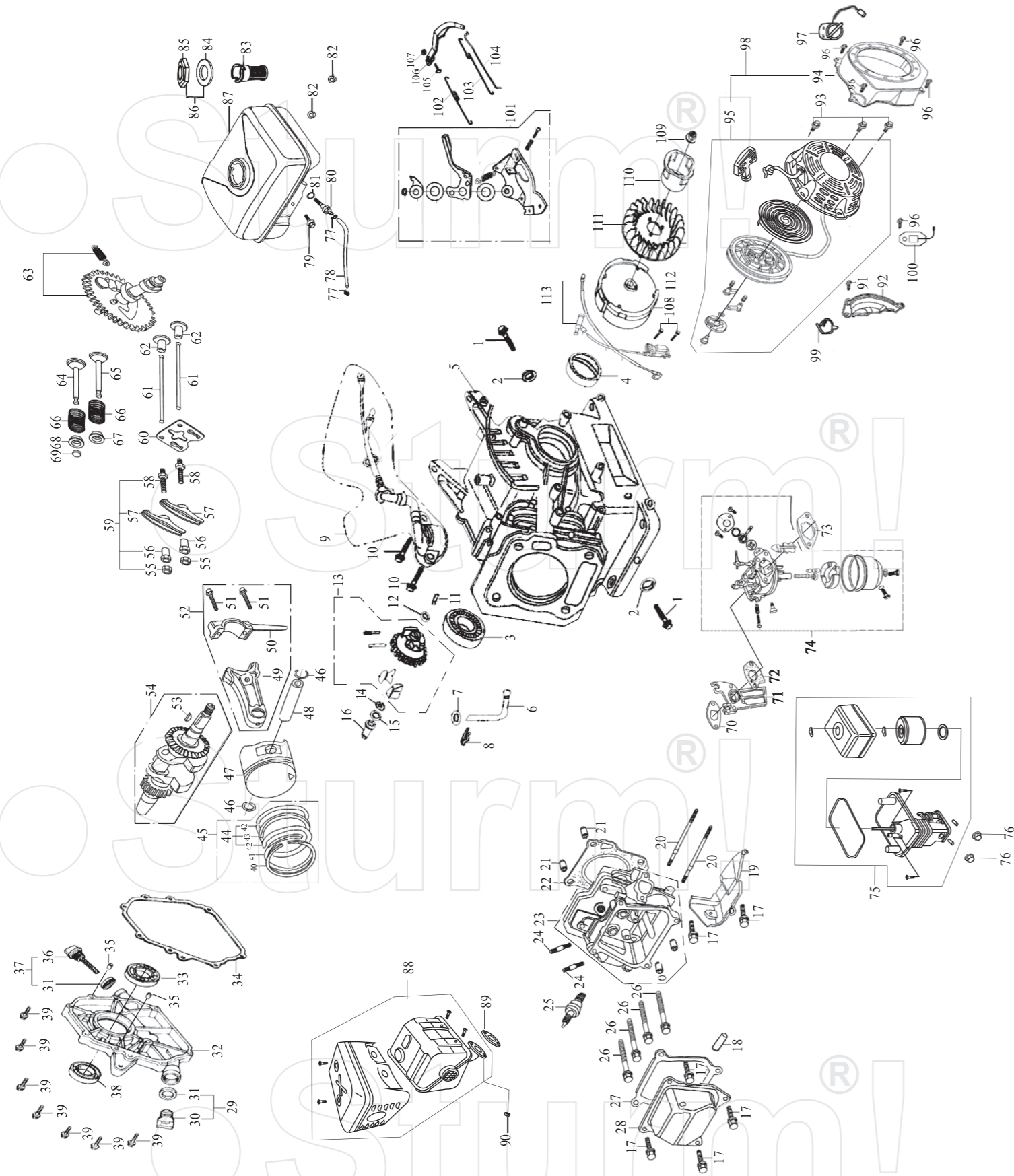
GK8355



NO.	DESCRIPTION	NO.	DESCRIPTION	NO.	DESCRIPTION
1	CLUTCH HANDLEBAR	39	SPRING	77	BIG BELT WHEEL ASSEMBLY
2	HANDLE GRIP	40	FLAT WASHER 10	78	FLAT KEY 5x5x35
3	DOWN CLUTCH HANDLE SEAT	41	WHEEL BUSHING	79	OUTER HEXAGON BOLT M8X30
4	UPPER CLUTCH HANDLE SEAT	42	PIN Ø2x37	80	FORWARD BELT
5	INNER HEXAGON BOLT M6x20	43	WHEEL	81	BACK BELT PROTECTOR BUSHING 1
6	REVERSE CABLE	44	OUTER HEXAGON BOLT M12X65	82	TENSION BUSHING
7	HANDLE	45	FIXING BOARD BUSHING	83	FRONT RIGHT BELT POSITION BUSH
8	FORWARD CABLE	46	FLANGE PLATE ASSEMBLY	84	BELT PROTECTOR BUSHING
9	OUTER HEXAGON BOLT M6x50	47	BEARING SEAT	85	BIG BELT PROTECTOR ASSEMBLY
10	RIGHT THROTTLE SWITCH BOX COVER	48	OUTER HEXAGON BOLT M8X25	86	BACK BELT PROTECTOR BUSHING 2
11	OUTER HEXAGON BOLT M8x18	49	FIXING BOARD ASSEMBLY	87	BELT COVER
12	THROTTLE SWITCH 2	50	BIG SPROCKET FIXING BOARD ASSEMBLY	88	LEFT BLADE
13	THROTTLE SWITCH 1	51	CIRCLIP 35	89	LEFT TINE ASSEMBLY
14	THROTTLE CABLE	52	DEEP GROOVE BALL BEARING 6003	90	RIGHT BLADE
15	LOCKNUT	53	BIG GEAR	91	BLADE HOLDER
16	FLAT WASHER 8	54	WASHER	92	OUTER HEXAGON FLANGE BOLT M8x45
17	LEFT THROTTLE SWITCH BOX COVER	55	SMALL BELT WHEEL BUSHING	93	OUTER HEXAGON FLANGE BOLT M8x40
18	LOCKNUT M8	56	FLAT WASHER φ8xφ28x3	94	RIGHT ENGINE SEAT
19	FLAT WASHER 8	57	PINION	95	SHAFT PIN Ø10x40
20	LOCKNUT M6	58	TENSION BUSHING	96	CHAIN BOX bushing
21	OUTER HEXAGON BOLT M8x20	59	FLAT KEY 4.78x5x45	97	SHAFT PIN Ø10x50
22	OUTER HEXAGON FLANGE BOLT M5x12	60	REVERSE TENSION ARM	98	FLAT WASHER 6
23	FIXING BOARD BUSHING	61	REVERSE TENSION PULLEY	99	RIGHT CHAIN BOX
24	5.5HP GASOLINE ENGINE	62	DEEP GROOVE BALL BEARING 628	100	DEEP GROOVE BALL BEARING 6206
25	DEPTH REGULATOR	63	CIRCLIO	101	BIG SPROCKET ASSEMBLY
26	OUTER HEXAGON FLANGE BOLT M6x30	64	CIRCLIP	102	CHAIN Ø8B-1-80
27	LEFT EXTENSION FENDER	65	REVERSE BELT	103	LEFT CHAIN BOX
28	LOCKNUT M5	66	REVERSE BELT PROTECTOR ASSEMBLY	104	SMALL SPROCKET
29	SPRING WASHER 8	67	CIRCLIP 12	105	SMALL SPROCKET BUSHING
30	NUT M6	68	CIRCLIP 28	106	ENGINE SEAT BUSHING
31	FENDER	69	FORWARD TENSION ARM	107	OUTER HEXAGON FLANGE BOLT M6x16
32	HEXAGON FLANGE LOCKNUT M8	70	FORWARD BELT PROTECTOR ASSEMBLY	108	LEFT ENGINE SEAT
33	OUTER HEXAGON FLANGE BOLT M8x16	71	DEEP GROOVE BALL BEARING 6001	109	OUTER HEXAGON NUT M10X1
34	RIGHT LENGTHEN FENDER	72	FORWARD TENSION PULLEY	110	SPRING WASHER 10
35	WHEEL ADJUSTMENT LEVER	73	INNER HEXAGON BOLT M6x16	111	SHAFT PINφ10X60
36	WHEEL LEVER ASSEMBLY	74	FORWARD SMALL BELT WHEEL	112	OUTER HEXAGON BOLT M10X1X25
37	LOCKNUT M12	75	OUTER HEXAGON NUT	113	BLADE ASSEMBLY 1
38	FLAT WASHER 12	76	BIG BELT WHEEL BUSHING		

RU201001-2

Engine for GK8355



NO.	DESCRIPTION	NO.	DESCRIPTION	NO.	DESCRIPTION
1	OIL DRAIN PLUG	39	M8×32 BOLT	77	PIPE CLAMP
2	WASHER	40	PISTON RING (I)	78	OUTLET PIPE
3	BEARING 6205	41	PISTON RING (II)	79	M6×22 BOLT
4	CRANKSHAFT OIL SEAL	42	SIDE RAIL	80	CONNECTOR
5	CRANKCASE	43	EXPANDER	81	PACKING RING
6	REGULATING SWAY BAR	44	SCRAPER RING SET	82	M6 NUT
7	WASHER	45	PISTON RING ASSEMBLY	83	FILTER CUP
8	SPLIT PIN	46	PISTON PIN CLIP	84	PACKING RING
9	OIL SENSOR	47	PISTON	85	FUEL CAP
10	M6×14 BOLT	48	PISTON PIN	86	FUEL CAP WITH ASSEMBLY
11	REGULATING SHAFT	49	SHANK	87	FUEL TANK
12	WASHER	50	CONNECTING ROD COVER	88	EXHAUST MUFFLER
13	REGULATOR GEAR ASSEMBLY	51	BOLT	89	EXHAUST GASKET
14	SNAP RING	52	CONNECTING ROD ASSEMBLY	90	M6 NUT
15	WASHER	53	WOODRUFF KEY	91	M6×22 BOLT
16	SLEEVE	54	CRANKSHAFT ASSEMBLY	92	CRANKCASE SIDE PLATE ASSEMBLY
17	M6×12 BOLT	55	LOCK NUT	93	M6×8 BOLT
18	AIR DUCT	56	SLEEVE	94	FAN HOOD ASSEMBLY
19	WIND COVER	57	VALVE ROCKER	95	RECOIL STARTER
20	M6×113 BOLT	58	ADJUSTING BOLT FOR VALVE GAP	96	M6×12 BOLT
21	SET PIN $\phi 10 \times 16$	59	VALVE ROCKER ASSEMBLY	97	ENGINE SWITCH
22	CYLINDER HEAD GASKET	60	PUSHER GUIDE	98	RECOIL STARTER ASSEMBLY
23	CYLINDER HEAD ASSEMBLY	61	PUSHER	99	PLASTIC CLIP
24	M8×34 BOLT	62	TAPPET	100	DIODE
25	SPARK PLUG	63	CAMSHAFT ASSEMBLY	101	REGULATING FRAME ASSEMBLY
26	BOLT	64	EXHAUST VALVE	102	BACK SPRING
27	CYLINDER HEAD COVER GASKET	65	INTAKE VALVE	103	REGULATING SPRING
28	CYLINDER HEAD COVER ASSEMBLY	66	VALVE SPRING	104	PULLING ROD
29	OIL PLUG ASSEMBLY	67	INTAKE VALVE SPRING SEAT	105	LOCK BOLT
30	OIL PLUG	68	EXHAUST VALVE SPRING SEAT	106	REGULATING ARM
31	SEAL	69	CAP	107	M6 NUT
32	CRANKCASE COVER	70	INLET GASKET	108	M6×25 SCREW
33	BEARING 6205	71	CONNECTING BLOCK	109	M14×1.5 NUT
34	CRANKCASE GASKET	72	CARBURETOR GASKET	110	STARTING FLANGE
35	SET PIN	73	AIR CLEANER GASKET	111	FLYWHEEL FAN
36	OIL DIPSTICK	74	CARBURETOR ASSEMBLY	112	FLYWHEEL
37	OIL DIPSTICK ASSEMBLY	75	AIR CLEANER	113	IGNITION COIL ASSEMBLY
38	CRANKSHAFT OIL SEAL	76	M6 NUT		