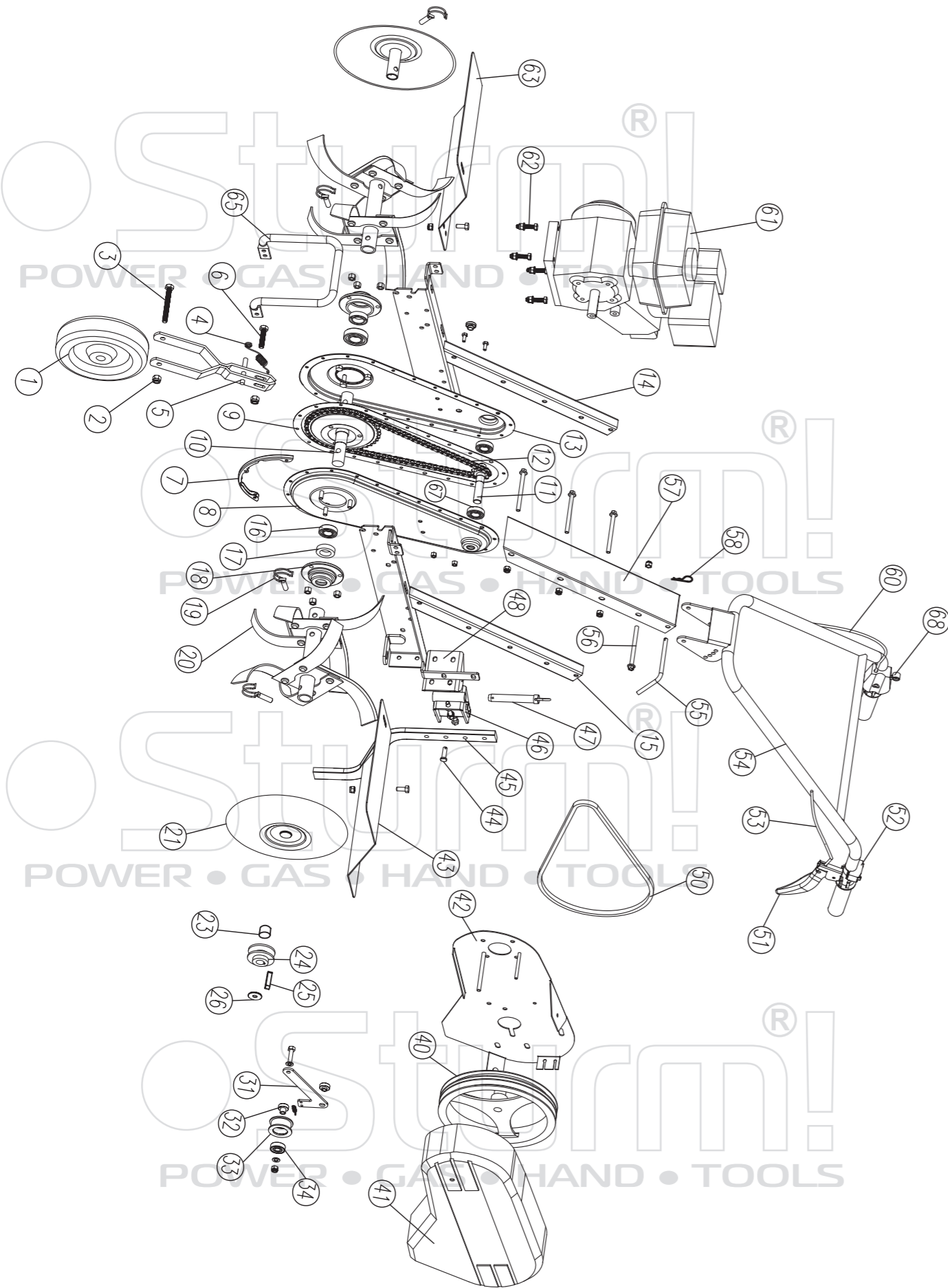


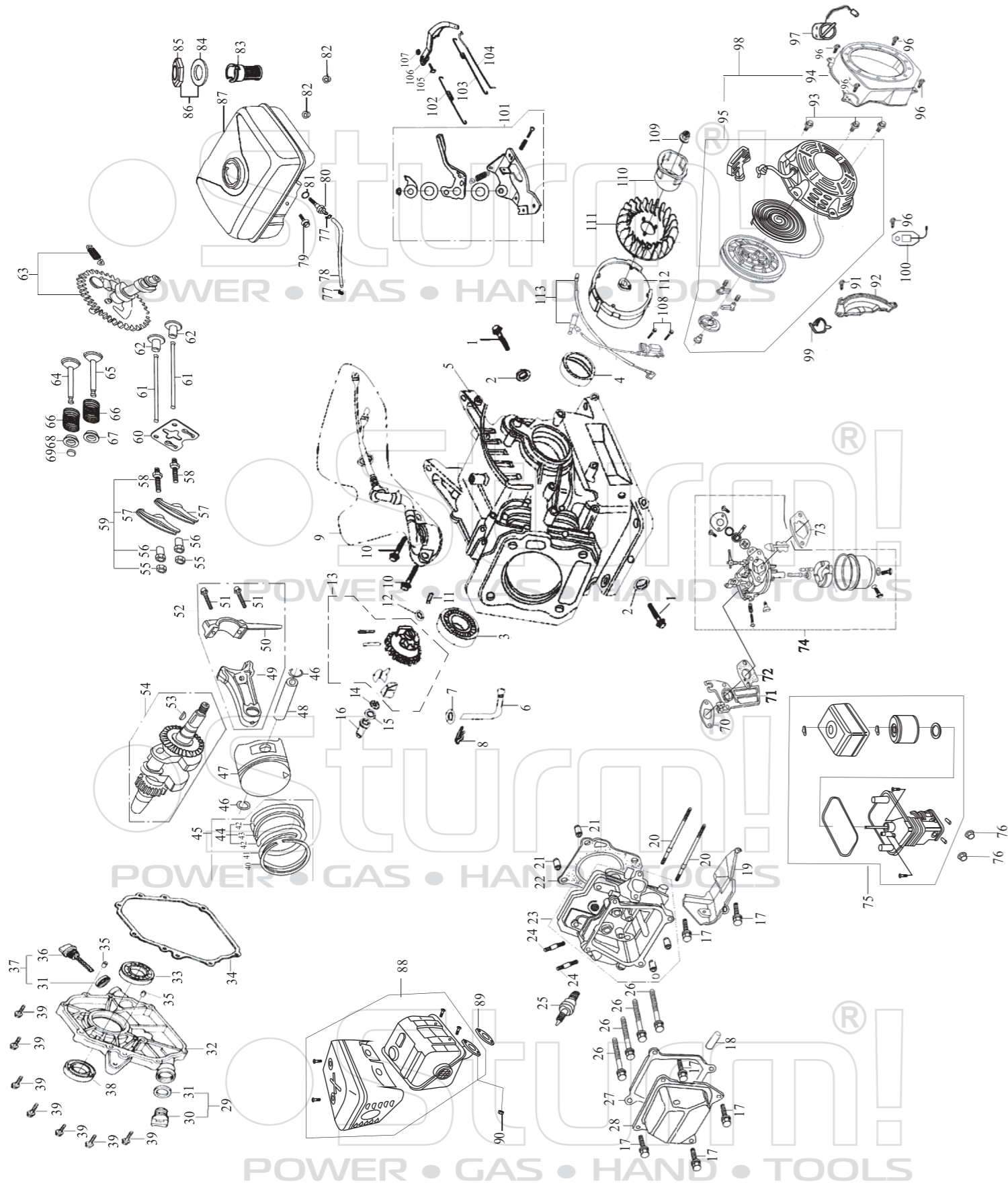
# GK8356



NO.	DESCRIPTION	NO.	DESCRIPTION
1	FRONT WHEEL	33	TENSION WHEEL
2	LOCKNUT	34	ROLLING BEARING 6202Z
3	BOLT	40	BIG BELT PULLEY
4	DRAW SPRING	41	BELT COVER
5	FRONT WHEEL BRACKET	42	ENGINE BAFFLE
6	HEXAGONAL BOLT	43	MUD GUARD(LEFT)
7	CHAIN BOX PROTECTIVE PART	44	FIXATION PIN
8	CHAIN BOX COVER(LEFT)	45	ADJUST LEVER
9	GASKET	46	STAND BAR SUPPORTER ASSEMBLY
10	BIG CHAIN PULLEY	47	FIXATION PIN ASSEMBLY
11	SMALL CHAIN PULLEY	48	STAND BAR SEAT PLATE 4
12	CHAIN	50	BELT
13	CHAIN BOX COVER(RIGHT)	51	WIRE HANDGRIP
14	GIRDER(RIGHT)	52	SWITCH
15	GIRDER(LEFT)	53	CLUTCH WIRE
16	ROLLING BEARING 6205Z	54	HANDLE
17	OIL SEAL	55	BOLT BAR
18	CHAIN BOX COVER	56	FLANGE SURFACE HEXAGONAL BOLT
19	HEMICYCLE PIN	57	COVER PLATE
20	BLADE ASSEMBLY	58	FIXATION PIN
21	BLADE COVER	60	THROTTLE WIRE
23	SMALL BELT PULLEY MAT COVER	61	ENGINE
24	SMALL BELT PULLEY	62	HEXAGONAL BOLT
25	KEY	63	MUDGUARD(RIGHT)
26	BIG WASHER	65	LIFT HANDLE
31	TENSION WHEEL SEAT PLATE	67	ROLLING BEARING 6203Z
32	TENSION WHEEL WASHER	68	THROTTLE SWITCH

ST20100706

# Engine for GK8356



NO.	DESCRIPTION	NO.	DESCRIPTION	NO.	DESCRIPTION
1	OIL DRAIN PLUG	39	M8×32 BOLT	77	PIPE CLAMP
2	WASHER	40	PISTON RING ( I )	78	OUTLET PIPE
3	BEARING 6205	41	PISTON RING ( II )	79	M6×22 BOLT
4	CRANKSHAFT OIL SEAL	42	SIDE RAIL	80	CONNECTOR
5	CRANKCASE	43	EXPANDER	81	PACKING RING
6	REGULATING SWAY BAR	44	SCRAPER RING SET	82	M6 NUT
7	WASHER	45	PISTON RING ASSEMBLY	83	FILTER CUP
8	SPLIT PIN	46	PISTON PIN CLIP	84	PACKING RING
9	OIL SENSOR	47	PISTON	85	FUEL CAP
10	M6×14 BOLT	48	PISTON PIN	86	FUEL CAP WITH ASSEMBLY
11	REGULATING SHAFT	49	SHANK	87	FUEL TANK
12	WASHER	50	CONNECTING ROD COVER	88	EXHAUST MUFFLER
13	REGULATOR GEAR ASSEMBLY	51	BOLT	89	EXHAUST GASKET
14	SNAP RING	52	CONNECTING ROD ASSEMBLY	90	M6 NUT
15	WASHER	53	WOODRUFF KEY	91	M6×22 BOLT
16	SLEEVE	54	CRANKSHAFT ASSEMBLY	92	CRANKCASE SIDE PLATE ASSEMBLY
17	M6×12 BOLT	55	LOCK NUT	93	M6×8 BOLT
18	AIR DUCT	56	SLEEVE	94	FAN HOOD ASSEMBLY
19	WIND COVER	57	VALVE ROCKER	95	RECOIL STARTER
20	M6×113 BOLT	58	ADJUSTING BOLT FOR VALVE GAP	96	M6×12 BOLT
21	SET PIN φ 10×16	59	VALVE ROCKER ASSEMBLY	97	ENGINE SWITCH
22	CYLINDER HEAD GASKET	60	PUSHER GUIDE	98	RECOIL STARTER ASSEMBLY
23	CYLINDER HEAD ASSEMBLY	61	PUSHER	99	PLASTIC CLIP
24	M8×34 BOLT	62	TAPPET	100	DIODE
25	SPARK PLUG	63	CAMSHAFT ASSEMBLY	101	REGULATING FRAME ASSEMBLY
26	BOLT	64	EXHAUST VALVE	102	BACK SPRING
27	CYLINDER HEAD COVER GASKET	65	INTAKE VALVE	103	REGULATING SPRING
28	CYLINDER HEAD COVER ASSEMBLY	66	VALVE SPRING	104	PULLING ROD
29	OIL PLUG ASSEMBLY	67	INTAKE VALVE SPRING SEAT	105	LOCK BOLT
30	OIL PLUG	68	EXHAUST VALVE SPRING SEAT	106	REGULATING ARM
31	SEAL	69	CAP	107	M6 NUT
32	CRANKCASE COVER	70	INLET GASKET	108	M6×25 SCREW
33	BEARING 6205	71	CONNECTING BLOCK	109	M14×1.5 NUT
34	CRANKCASE GASKET	72	CARBURETOR GASKET	110	STARTING FLANGE
35	SET PIN	73	AIR CLEANER GASKET	111	FLYWHEEL FAN
36	OIL DIPSTICK	74	CARBURETOR ASSEMBLY	112	FLYWHEEL
37	OIL DIPSTICK ASSEMBLY	75	AIR CLEANER	113	IGNITION COIL ASSEMBLY
38	CRANKSHAFT OIL SEAL	76	M6 NUT		

ST20100706