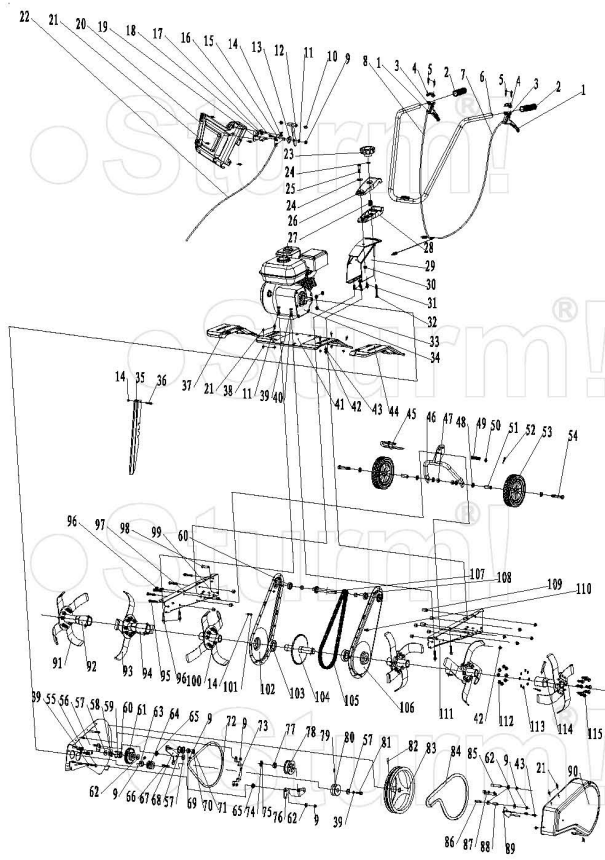
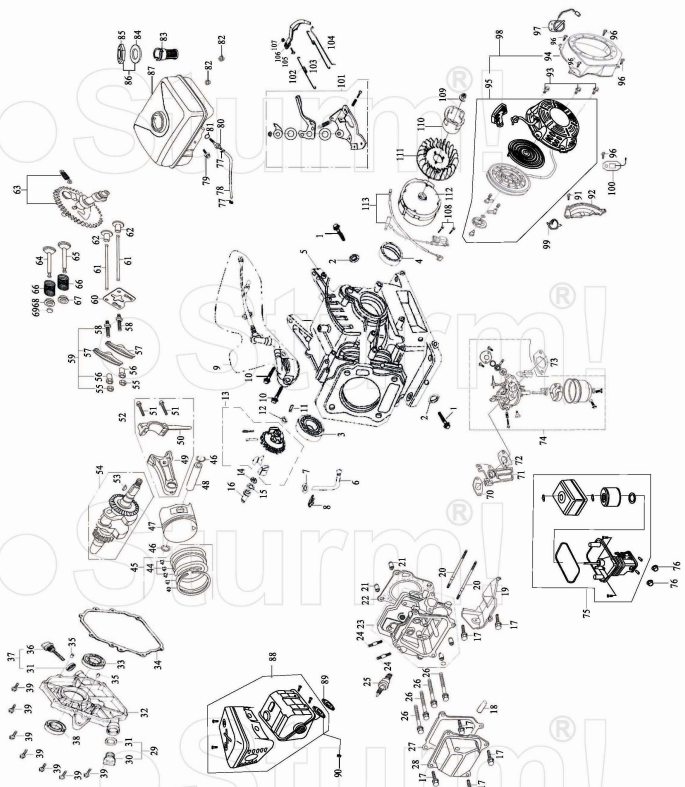


GK8360



NO.	DESCRIPTION	NO.	DESCRIPTION	NO.	DESCRIPTION
1	CLUTCH SWITCH	40	NUT	79	SCREW
2	STEER COVER	41	FENDER	80	FORWARD SMALL BELT WHEEL
3	DOWN CLUTCH SWITCH HOLDER	42	ANTI-LOOSE NUT	81	NUT
4	UPPER CLUTCH SWITCH HOLDER	43	BOLT	82	PIN
5	SCREW	44	RIGHT LENGTHEN BOARD	83	BIG BELT WHEEL
6	STEER	45	LICK HANDLE	84	FORWARD BELT
7	REVERSE WIRE	46	WHEEL BRACKET	85	BACK BELT POSITION BUSH
8	FORWARD WIRE	47	ANTI-LOOSE NUT	86	FRONT RIGHT BELT POSITION BUSH
9	ANTI-LOOSE NUT	48	WASHER	87	POSITION BUSH
10	TUBE COVER	49	SPRING	88	FRONT LEFT BELT POSITION BUSH
11	WASHER	50	WASHER	89	BELT POSITION BOARD
12	THROTTLE SWITCH	51	BUSH	90	BELT COVER
13	POSITION BOARD	52	PIN	91	LEFT BLADE
14	ANTI-LOOSE NUT	53	WHEEL	92	LEFT BLADE HOLDER
15	THROTTLE SWITCH BRACKET	54	BOLT	93	RIGHT BLADE
16	BOLT	55	BOLT	94	RIGHT BLADE HOLDER
17	SCREW	56	FIX BOARD	95	BOLT
18	WASHER	57	WASHER	96	BOLT
19	NUT	58	GEAR TENSION BUSH	97	RIGHT BASE
20	PANEL	59	CIRCLIP	98	PIN
21	BOLT	60	BEARING	99	CHAIN BOX POSITION PIN
22	THROTTLE WIRE	61	GEAR	100	PIN
23	STEER FIX KNOB	62	WASHER	101	WASHER
24	WASHER	63	SMALL BELT WHEEL BUSH	102	RIGHT CHAIN BOX
25	BOLT	64	PINION	103	BEARING
26	UPPER STEER HOLDER	65	TENSION BUSH	104	BIG SPROCKET
27	SPRING	66	KEY	105	CHAIN
28	DOWN STEER HOLDER	67	REVERSE TENSION ARM	106	LEFT CHAIN BOX
29	STEER BASE	68	REVERSE TENSION WHEEL	107	SMALL SPROCKET
30	ANTI-LOOSE NUT	69	BEARING	108	SMALL SPROCKET POSITION BUSH
31	BOLT	70	CIRCLIP	109	BASE POSITION BUSH
32	SCREW	71	CIRCLIP	110	SCREW
33	FIX BOARD POSITION BUSH	72	REVERSE BELT	111	LEFT BASE
34	ENGINE	73	REVERSE BELT GUARD	112	NUT
35	DEPTH SKID	74	CIRCLIP	113	WASHER
36	BOLT	75	CIRCLIP	114	PIN
37	LEFT LENGTHEN BOARD	76	FORWARD TENSION ARM	115	BOLT
38	ANTI-LOOSE NUT	77	BEARING		
39	SPRING WASHER	78	FORWARD TENSION WHEEL		



Engine for GK8360

NO.	DESCRIPTION	NO.	DESCRIPTION	NO.	DESCRIPTION
1	OIL DRAIN PLUG	39	M8×32 BOLT	77	PIPE CLAMP
2	WASHER	40	PISTON RING (I)	78	OUTLET PIPE
3	BEARING 6205	41	PISTON RING (II)	79	M6×22 BOLT
4	CRANKSHAFT OIL SEAL	42	SIDE RAIL	80	CONNECTOR
5	CRANKCASE	43	EXPANDER	81	PACKING RING
6	REGULATING SWAY BAR	44	SCRAPER RING SET	82	M6 NUT
7	WASHER	45	PISTON RING ASSEMBLY	83	FILTER CUP
8	SPLIT PIN	46	PISTON PIN CLIP	84	PACKING RING
9	OIL SENSOR	47	PISTON	85	FUEL CAP
10	M6×14 BOLT	48	PISTON PIN	86	FUEL CAP WITH ASSEMBLY
11	REGULATING SHAFT	49	SHANK	87	FUEL TANK
12	WASHER	50	CONNECTING ROD COVER	88	EXHAUST MUFFLER
13	REGULATOR GEAR ASSEMBLY	51	BOLT	89	EXHAUST GASKET
14	SNAP RING	52	CONNECTING ROD ASSEMBLY	90	M6 NUT
15	WASHER	53	WOODRUFF KEY	91	M6×22 BOLT
16	SLEEVE	54	CRANKSHAFT ASSEMBLY	92	CRANKCASE SIDE PLATE ASSEMBLY
17	M6×12 BOLT	55	LOCK NUT	93	M6×8 BOLT
18	AIR DUCT	56	SLEEVE	94	FAN HOOD ASSEMBLY
19	WIND COVER	57	VALVE ROCKER	95	RECOIL STARTER
20	M6×113 BOLT	58	ADJUSTING BOLT FOR VALVE GAP	96	M6×12 BOLT
21	SET PIN φ 10×16	59	VALVE ROCKER ASSEMBLY	97	ENGINE SWITCH
22	CYLINDER HEAD GASKET	60	PUSHER GUIDE	98	RECOIL STARTER ASSEMBLY
23	CYLINDER HEAD ASSEMBLY	61	PUSHER	99	PLASTIC CLIP
24	M8×34 BOLT	62	TAPPET	100	DIODE
25	SPARK PLUG	63	CAMSHAFT ASSEMBLY	101	REGULATING FRAME ASSEMBLY
26	BOLT	64	EXHAUST VALVE	102	BACK SPRING
27	CYLINDER HEAD COVER GASKET	65	INTAKE VALVE	103	REGULATING SPRING
28	CYLINDER HEAD COVER ASSEMBLY	66	VALVE SPRING	104	PULLING ROD
29	OIL PLUG ASSEMBLY	67	INTAKE VALVE SPRING SEAT	105	LOCK BOLT
30	OIL PLUG	68	EXHAUST VALVE SPRING SEAT	106	REGULATING ARM
31	SEAL	69	CAP	107	M6 NUT
32	CRANKCASE COVER	70	INLET GASKET	108	M6×25 SCREW
33	BEARING 6205	71	CONNECTING BLOCK	109	M14×1.5 NUT
34	CRANKCASE GASKET	72	CARBURETOR GASKET	110	STARTING FLANGE
35	SET PIN	73	AIR CLEANER GASKET	111	FLYWHEEL FAN
36	OIL DIPSTICK	74	CARBURETOR ASSEMBLY	112	FLYWHEEL
37	OIL DIPSTICK ASSEMBLY	75	AIR CLEANER	113	IGNITION COIL ASSEMBLY
38	CRANKSHAFT OIL SEAL	76	M6 NUT		