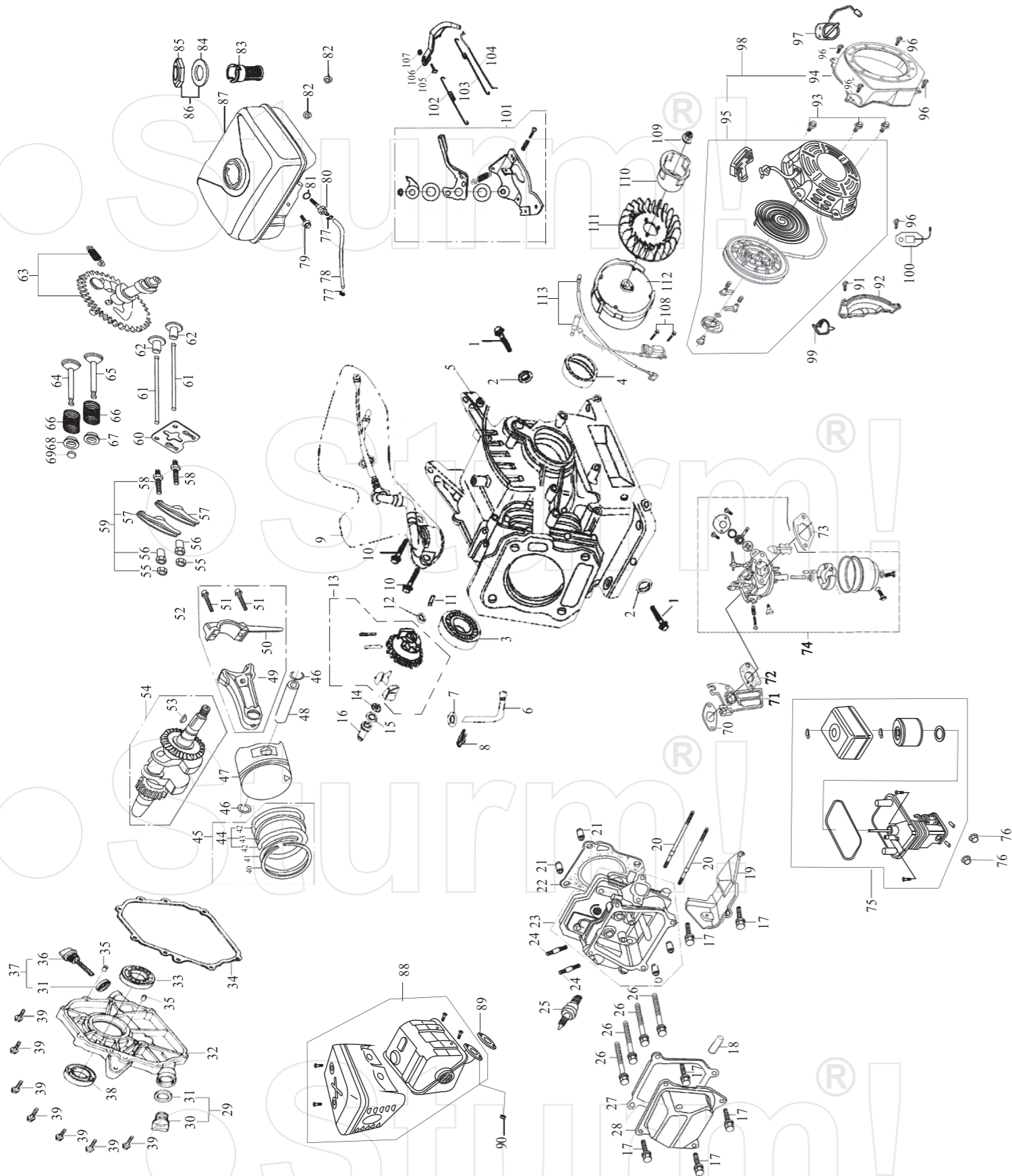


GK8360

NO.	DESCRIPTION	NO.	DESCRIPTION	NO.	DESCRIPTION
1	CLUTCH HANDLEBAR	42	OUTER HEXAGON FLANGE LOCKNUT M8	83	SCREW M6X16
2	HANDLE GRIP	43	OUTER HEXAGON FLANGE BOLT M8x16	84	FORWARD SMALL BELT WHEEL
3	DOWN CLUTCH HANDLE SEAT	44	RIGHT LENGTHEN FENDER	85	NUT
4	UPPER CLUTCH HANDLE SEAT	45	WHEEL ADJUSTMENT LEVER	86	BIG BELT WHEEL BUSHING
5	INNER HEXAGON BOLT M6x20	46	WHEEL LEVER ASSEMBLY	87	BIG BELT WHEEL ASSEMBLY
6	HANDLE	47	ANTI-LOOSE NUT	88	FLAT KEY 5x5x35
7	REVERSE CABLE	48	FLAT WASHER 12	89	OUTER HEXAGON BOLT M8X30
8	FORWARD CABLE	49	SPRING	90	FORWARD BELT
9	LOCKNUT M8	50	FLAT WASHER 10	91	BACK BELT PROTECTOR BUSHING 1
10	TUBE PLUG	51	WHEEL BUSHING	92	TENSION BUSHING
11	FLAT WASHER 8	52	PIN Φ 2x37	93	FRONT RIGHT BELT POSITION BUSH
12	THROTTLE SWITCH ASSEMBLY	53	WHEEL	94	BELT PROTECTOR BUSHING
13	POSITION BOARD	54	OUTER HEXAGON BOLT M12x65	95	BIG BELT PROTECTOR ASSEMBLY
14	LOCKNUT M6	55	FIXING BOARD BUSHING	96	BACK BELT PROTECTOR BUSHING 2
15	THROTTLE SWITCH BRACKET	56	FLANGE PLATE ASSEMBLY	97	BELT COVER
16	OUTER HEXAGON BOLT M8x20	57	BEARING SEAT	98	LEFT BLADE
17	SCREW M4x10	58	OUTER HEXAGON BOLT M8x25	99	LEFT TINE ASSEMBLY 4
18	FLAT WASHER 5	59	FIXING BOARD	100	RIGHT BLADE
19	NUT M6	60	BIG GEAR FIXING BOARD ASSEMBLY	101	BLADE ASSEMBLY 2
20	PANEL	61	CIRCLIP 35	102	OUTER HEXAGON FLANGE BOLT M8x45
21	OUTER HEXAGON FLANGE BOLT M8x20	62	DEEP GROOVE BALL BEARING 6003	103	OUTER HEXAGON FLANGE BOLT M8x40
22	THROTTLE CABLE	63	BIG GEAR	104	RIGHT ENGINE SEAT
23	HANDLE KNOB NUT	64	WASHER	105	SHAFT PIN Φ 10x40
24	FLAT WASHER ϕ 10x ϕ 30x2	65	SMALL BELT WHEEL BUSHING	106	CHAIN BOX bushing
25	OUTER HEXAGON BOLT M10x40	66	FLAT WASHER ϕ 8x ϕ 28x3	107	SHAFT PIN Φ 10x50
26	UPPER HANDLE SEAT	67	PINION	108	FLAT WASHER 6
27	SPRING	68	TENSION BUSHING	109	RIGHT CHAIN BOX
28	DOWN HANDLE SEAT	69	FALT KEY 4.78x5x45	110	DEEP GROOVE BALL BEARING 6206
29	HANDLE SEAT	70	REVERSE TENSION ARM	111	BIG SPROCKET ASSEMBLY
30	LOCKNUT M10	71	REVERSE TENSION PULLEY	112	CHAIN 08B-1-80
31	OUTER HEXAGON FLANGE BOLT M8x20	72	DEEP GROOVE BALL BEARING 628	113	LEFT CHAIN BOX
32	SCREW M10X65	73	CIRCLIP8	114	SMALL SPROCKET
33	FIXING BOARD BUSHING	74	CIRCLIP 24	115	SMALL SPROCKET BUSHING
34	6.5HP GASOINE ENGINE	75	REVERSE BELT	116	ENGINE SEAT BUSHING
35	DEPTH REGULATOR	76	REVERSE BELT PROTECTOR ASSEMBLY	117	OUTER HEXAGON FLANGE BOLT M6x16
36	BOLT	77	CIRCLIP 12	118	LEFT ENGINE SEAT
37	LEFT LENGTHEN FENDER	78	CIRCLIP 28	119	OUTER HEXAGON NUT M10X1
38	LOCKNUT	79	FORWARD TENSION ARM	120	SPRING WASHER 10
39	SPRING WASHER 8	80	FORWARD BELT PROTECTOR ASSEMBLY	121	SHAFT PIN ϕ 10X60
40	NUT M8	81	DEEP GROOVE BALL BEARING 6001	122	OUTER HEXAGON BOLT M10X1X25
41	FENDER	82	FORWARD TENSION PULLEY	123	BLADE ASSEMBLY 1

Engine for GK8360



NO.	DESCRIPTION	NO.	DESCRIPTION	NO.	DESCRIPTION
1	OIL DRAIN PLUG	39	M8×32 BOLT	77	PIPE CLAMP
2	WASHER	40	PISTON RING (I)	78	OUTLET PIPE
3	BEARING 6205	41	PISTON RING (II)	79	M6×22 BOLT
4	CRANKSHAFT OIL SEAL	42	SIDE RAIL	80	CONNECTOR
5	CRANKCASE	43	EXPANDER	81	PACKING RING
6	REGULATING SWAY BAR	44	SCRAPER RING SET	82	M6 NUT
7	WASHER	45	PISTON RING ASSEMBLY	83	FILTER CUP
8	SPLIT PIN	46	PISTON PIN CLIP	84	PACKING RING
9	OIL SENSOR	47	PISTON	85	FUEL CAP
10	M6×14 BOLT	48	PISTON PIN	86	FUEL CAP WITH ASSEMBLY
11	REGULATING SHAFT	49	SHANK	87	FUEL TANK
12	WASHER	50	CONNECTING ROD COVER	88	EXHAUST MUFFLER
13	REGULATOR GEAR ASSEMBLY	51	BOLT	89	EXHAUST GASKET
14	SNAP RING	52	CONNECTING ROD ASSEMBLY	90	M6 NUT
15	WASHER	53	WOODRUFF KEY	91	M6×22 BOLT
16	SLEEVE	54	CRANKSHAFT ASSEMBLY	92	CRANKCASE SIDE PLATE ASSEMBLY
17	M6×12 BOLT	55	LOCK NUT	93	M6×8 BOLT
18	AIR DUCT	56	SLEEVE	94	FAN HOOD ASSEMBLY
19	WIND COVER	57	VALVE ROCKER	95	RECOIL STARTER
20	M6×113 BOLT	58	ADJUSTING BOLT FOR VALVE GAP	96	M6×12 BOLT
21	SET PIN φ 10×16	59	VALVE ROCKER ASSEMBLY	97	ENGINE SWITCH
22	CYLINDER HEAD GASKET	60	PUSHER GUIDE	98	RECOIL STARTER ASSEMBLY
23	CYLINDER HEAD ASSEMBLY	61	PUSHER	99	PLASTIC CLIP
24	M8×34 BOLT	62	TAPPET	100	DIODE
25	SPARK PLUG	63	CAMSHAFT ASSEMBLY	101	REGULATING FRAME ASSEMBLY
26	BOLT	64	EXHAUST VALVE	102	BACK SPRING
27	CYLINDER HEAD COVER GASKET	65	INTAKE VALVE	103	REGULATING SPRING
28	CYLINDER HEAD COVER ASSEMBLY	66	VALVE SPRING	104	PULLING ROD
29	OIL PLUG ASSEMBLY	67	INTAKE VALVE SPRING SEAT	105	LOCK BOLT
30	OIL PLUG	68	EXHAUST VALVE SPRING SEAT	106	REGULATING ARM
31	SEAL	69	CAP	107	M6 NUT
32	CRANKCASE COVER	70	INLET GASKET	108	M6×25 SCREW
33	BEARING 6205	71	CONNECTING BLOCK	109	M14×1.5 NUT
34	CRANKCASE GASKET	72	CARBURETOR GASKET	110	STARTING FLANGE
35	SET PIN	73	AIR CLEANER GASKET	111	FLYWHEEL FAN
36	OIL DIPSTICK	74	CARBURETOR ASSEMBLY	112	FLYWHEEL
37	OIL DIPSTICK ASSEMBLY	75	AIR CLEANER	113	IGNITION COIL ASSEMBLY
38	CRANKSHAFT OIL SEAL	76	M6 NUT		