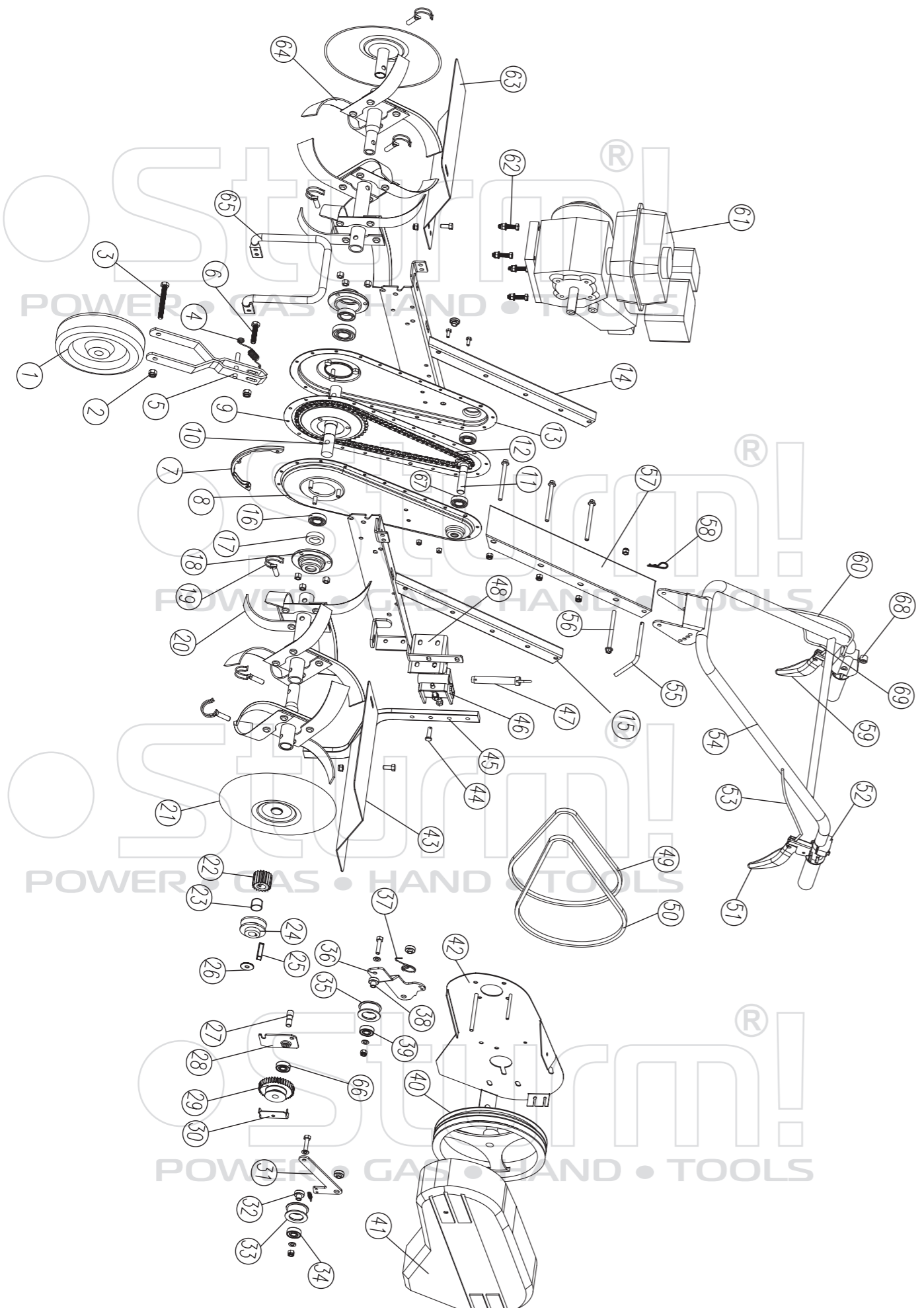


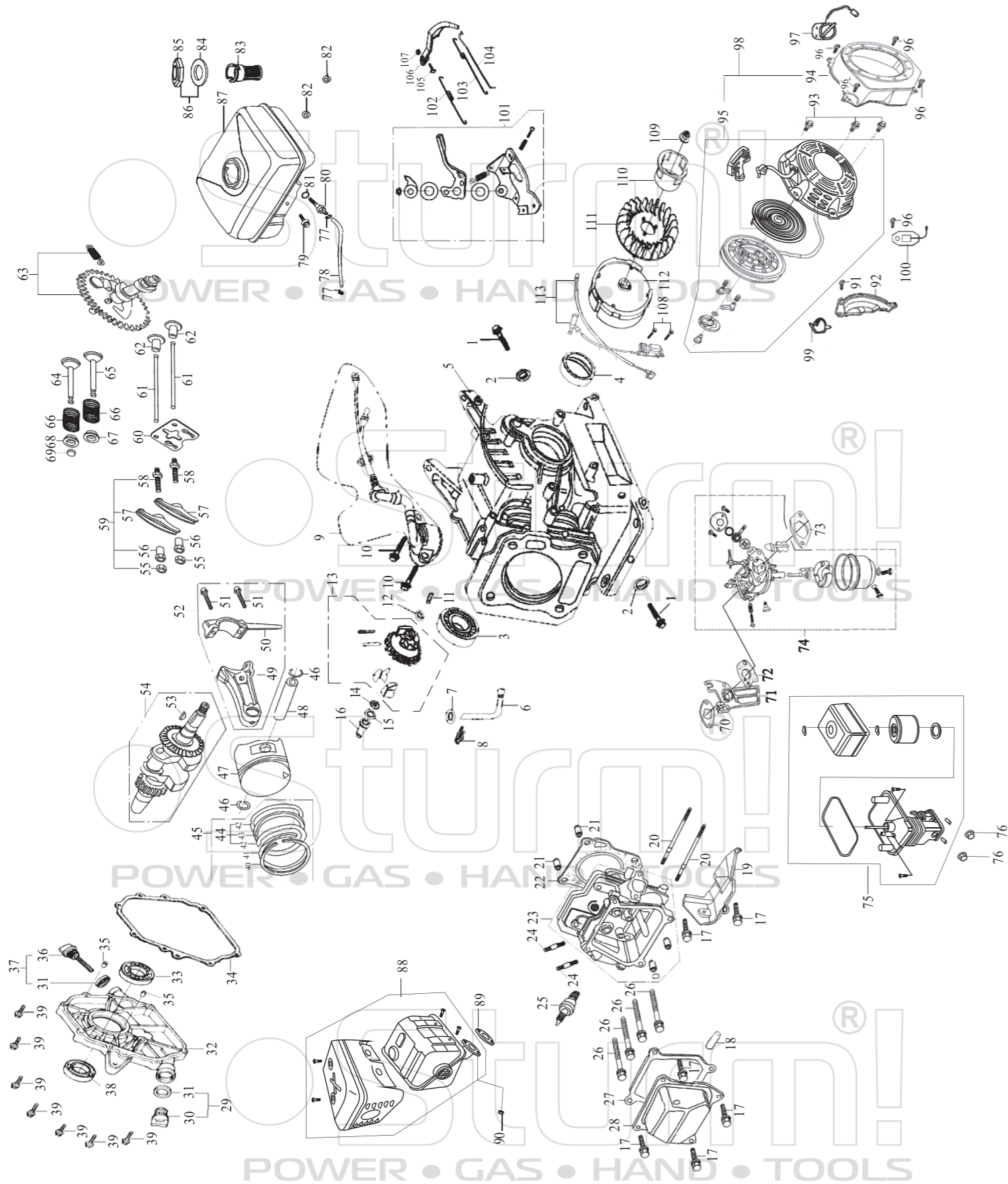
GK8361

| NO. | DESCRIPTION | NO. | DESCRIPTION |
|-----|-----------------------------|-----|-------------------------------|
| 1 | FRONT WHEEL | 36 | TENSION WHEEL SEAT PLATE |
| 2 | LOCKNUT | 37 | TORSION SPRING |
| 3 | BOLT | 38 | TENSION WHEEL WASHER |
| 4 | DRAW SPRING | 39 | ROLLING BEARING 6202Z |
| 5 | FRONT WHEEL BRACKET | 40 | BIG BELT PULLEY |
| 6 | HEXAGONAL BOLT | 41 | BELT COVER |
| 7 | CHAIN BOX PROTECTIVE PART | 42 | ENGINE BAFFLE |
| 8 | CHAIN BOX COVER(LEFT) | 43 | MUD GUARD(LEFT) |
| 9 | GASKET | 44 | FIXATION PIN |
| 10 | BIG CHAIN PULLEY | 45 | ADJUST LEVER |
| 11 | SMALL CHAIN PULLEY | 46 | STAND BAR SUPPORTER ASSEMBLY |
| 12 | CHAIN | 47 | FIXATION PIN ASSEMBLY |
| 13 | CHAIN BOX COVER(RIGHT) | 48 | STAND BAR SEAT PLATE 4 |
| 14 | GIRDER(RIGHT) | 49 | REVERSE BELT |
| 15 | GIRDER(LEFT) | 50 | FORWARD BELT |
| 16 | ROLLING BEARING 6205Z | 51 | FORWARD WIRE HANDGRIP |
| 17 | OIL SEAL | 52 | SWITCH |
| 18 | CHAIN BOX COVER | 53 | FORWARD CLUTCH WIRE |
| 19 | HEMICYCLE PIN | 54 | HANDLE |
| 20 | BLADE ASSEMBLY | 55 | BOLT BAR |
| 21 | BLADE COVER | 56 | FLANGE SURFACE HEXAGONAL BOLT |
| 22 | GEAR | 57 | COVER PLATE |
| 23 | SMALL BELT PULLEY MAT COVER | 58 | FIXATION PIN |
| 24 | SMALL BELT PULLEY | 59 | REVERSE WIRE HANDGRIP |
| 25 | KEY | 60 | THROTTLE WIRE |
| 26 | BIG WASHER | 61 | ENGINE |
| 27 | AXIS | 62 | HEXAGONAL BOLT |
| 28 | INSTALLATION BOARD | 63 | MUDGUARD(RIGHT) |
| 29 | GEAR | 64 | ADDITIONA BLADE ASSEMBLY |
| 30 | BAFFLE | 65 | LIFT HANDLE |
| 31 | TENSION WHEEL SEAT PLATE | 66 | ROLLING BEARING 6201Z |
| 32 | TENSION WHEEL WASHER | 67 | ROLLING BEARING 6003Z |
| 33 | TENSION WHEEL | 68 | THROTTLE SWITCH |
| 34 | ROLLING BEARING 6202Z | 69 | REVERSE CLUTCH WIRE |
| 35 | TENSION WHEEL | | |

ST20100706



Engine for GK8361



| NO. | DESCRIPTION | NO. | DESCRIPTION | NO. | DESCRIPTION |
|-----|------------------------------|-----|------------------------------|-----|-------------------------------|
| 1 | OIL DRAIN PLUG | 39 | M8×32 BOLT | 77 | PIPE CLAMP |
| 2 | WASHER | 40 | PISTON RING (I) | 78 | OUTLET PIPE |
| 3 | BEARING 6205 | 41 | PISTON RING (II) | 79 | M6×22 BOLT |
| 4 | CRANKSHAFT OIL SEAL | 42 | SIDE RAIL | 80 | CONNECTOR |
| 5 | CRANKCASE | 43 | EXPANDER | 81 | PACKING RING |
| 6 | REGULATING SWAY BAR | 44 | SCRAPER RING SET | 82 | M6 NUT |
| 7 | WASHER | 45 | PISTON RING ASSEMBLY | 83 | FILTER CUP |
| 8 | SPLIT PIN | 46 | PISTON PIN CLIP | 84 | PACKING RING |
| 9 | OIL SENSOR | 47 | PISTON | 85 | FUEL CAP |
| 10 | M6×14 BOLT | 48 | PISTON PIN | 86 | FUEL CAP WITH ASSEMBLY |
| 11 | REGULATING SHAFT | 49 | SHANK | 87 | FUEL TANK |
| 12 | WASHER | 50 | CONNECTING ROD COVER | 88 | EXHAUST MUFFLER |
| 13 | REGULATOR GEAR ASSEMBLY | 51 | BOLT | 89 | EXHAUST GASKET |
| 14 | SNAP RING | 52 | CONNECTING ROD ASSEMBLY | 90 | M6 NUT |
| 15 | WASHER | 53 | WOODRUFF KEY | 91 | M6×22 BOLT |
| 16 | SLEEVE | 54 | CRANKSHAFT ASSEMBLY | 92 | CRANKCASE SIDE PLATE ASSEMBLY |
| 17 | M6×12 BOLT | 55 | LOCK NUT | 93 | M6×8 BOLT |
| 18 | AIR DUCT | 56 | SLEEVE | 94 | FAN HOOD ASSEMBLY |
| 19 | WIND COVER | 57 | VALVE ROCKER | 95 | RECOIL STARTER |
| 20 | M6×113 BOLT | 58 | ADJUSTING BOLT FOR VALVE GAP | 96 | M6×12 BOLT |
| 21 | SET PIN φ 10×16 | 59 | VALVE ROCKER ASSEMBLY | 97 | ENGINE SWITCH |
| 22 | CYLINDER HEAD GASKET | 60 | PUSHER GUIDE | 98 | RECOIL STARTER ASSEMBLY |
| 23 | CYLINDER HEAD ASSEMBLY | 61 | PUSHER | 99 | PLASTIC CLIP |
| 24 | M8×34 BOLT | 62 | TAPPET | 100 | DIODE |
| 25 | SPARK PLUG | 63 | CAMSHAFT ASSEMBLY | 101 | REGULATING FRAME ASSEMBLY |
| 26 | BOLT | 64 | EXHAUST VALVE | 102 | BACK SPRING |
| 27 | CYLINDER HEAD COVER GASKET | 65 | INTAKE VALVE | 103 | REGULATING SPRING |
| 28 | CYLINDER HEAD COVER ASSEMBLY | 66 | VALVE SPRING | 104 | PULLING ROD |
| 29 | OIL PLUG ASSEMBLY | 67 | INTAKE VALVE SPRING SEAT | 105 | LOCK BOLT |
| 30 | OIL PLUG | 68 | EXHAUST VALVE SPRING SEAT | 106 | REGULATING ARM |
| 31 | SEAL | 69 | CAP | 107 | M6 NUT |
| 32 | CRANKCASE COVER | 70 | INLET GASKET | 108 | M6×25 SCREW |
| 33 | BEARING 6205 | 71 | CONNECTING BLOCK | 109 | M14×1.5 NUT |
| 34 | CRANKCASE GASKET | 72 | CARBURETOR GASKET | 110 | STARTING FLANGE |
| 35 | SET PIN | 73 | AIR CLEANER GASKET | 111 | FLYWHEEL FAN |
| 36 | OIL DIPSTICK | 74 | CARBURETOR ASSEMBLY | 112 | FLYWHEEL |
| 37 | OIL DIPSTICK ASSEMBLY | 75 | AIR CLEANER | 113 | IGNITION COIL ASSEMBLY |
| 38 | CRANKSHAFT OIL SEAL | 76 | M6 NUT | | |

ST20100706