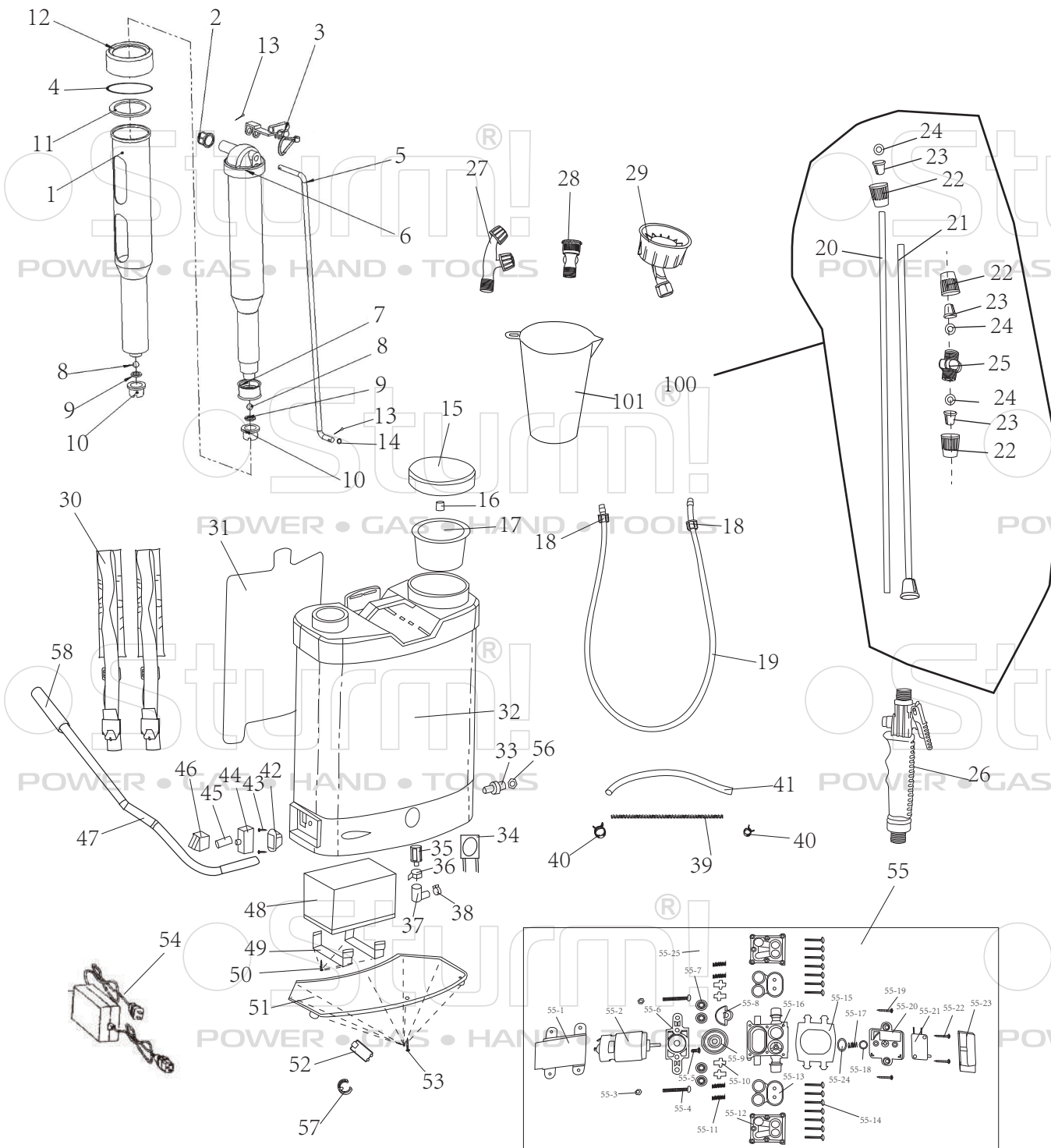


GS8216BM



NO.	DESCRIPTION	NO.	DESCRIPTION
1	Pump	43	Screw
2	plug	44	Speed-control switch
3	oper arm clamp	45	Speed control knob
4	gasket ring	46	Switch
5	connetion rod	47	Rocker
6	Air chamber cap	48	12V,8AH Battery
7	Bowl	49	Battery belt
8	Sealing ball	50	Screw
9	water outlet Seal valve	51	Base plate
10	water inlet seal valve	52	Base plate buckle
11	Oilcloth seal Ring	53	Screw
12	pressure lid of air chamber	54	charger
13	Cotter pin	55	Mini Pump
14	spacer	55-1	housing
15	cap	55-2	Dc motor
16	Intake valve	55-3	nut
17	Filter	55-4	Screw
18	Hose nut	55-5	Screw
19	Hose	55-6	Support bracket
20	Stainless steel pipe 1	55-7	Valve seat
21	Stainless steel pipe 2	55-8	Eccentric wheel
22	nut for spray rod	55-9	bearing
23	cover for opening	55-10	valve core
24	seal ring	55-11	Spring
25	Spray rod joint	55-12	Pump body cover
26	Trigger	55-13	Pump membrane
27	double nozzle	55-14	Screw
28	Four- hole nozzle	55-15	connetion rod
29	eight- hole nozzle	55-16	Pump body
30	Straps	55-17	Spring
31	Back pad	55-18	spacer
32	Tank	55-19	Screw
33	outlets connection	55-20	Pump body roof
34	Power indicator	55-21	Switch
35	Filter	55-22	Screw
36	Clamp	55-23	Switch cover
37	Water inlet connection	55-24	Rubber ring
38	Clamp	55-25	Pump body under cover
39	Spring	56	connection nut
40	Tube clamp	57	Fixed Buckle
41	Transparent hose	58	Handle sleeve
42	Charger plug	100	spray gun assembly
101	Measuring cup		