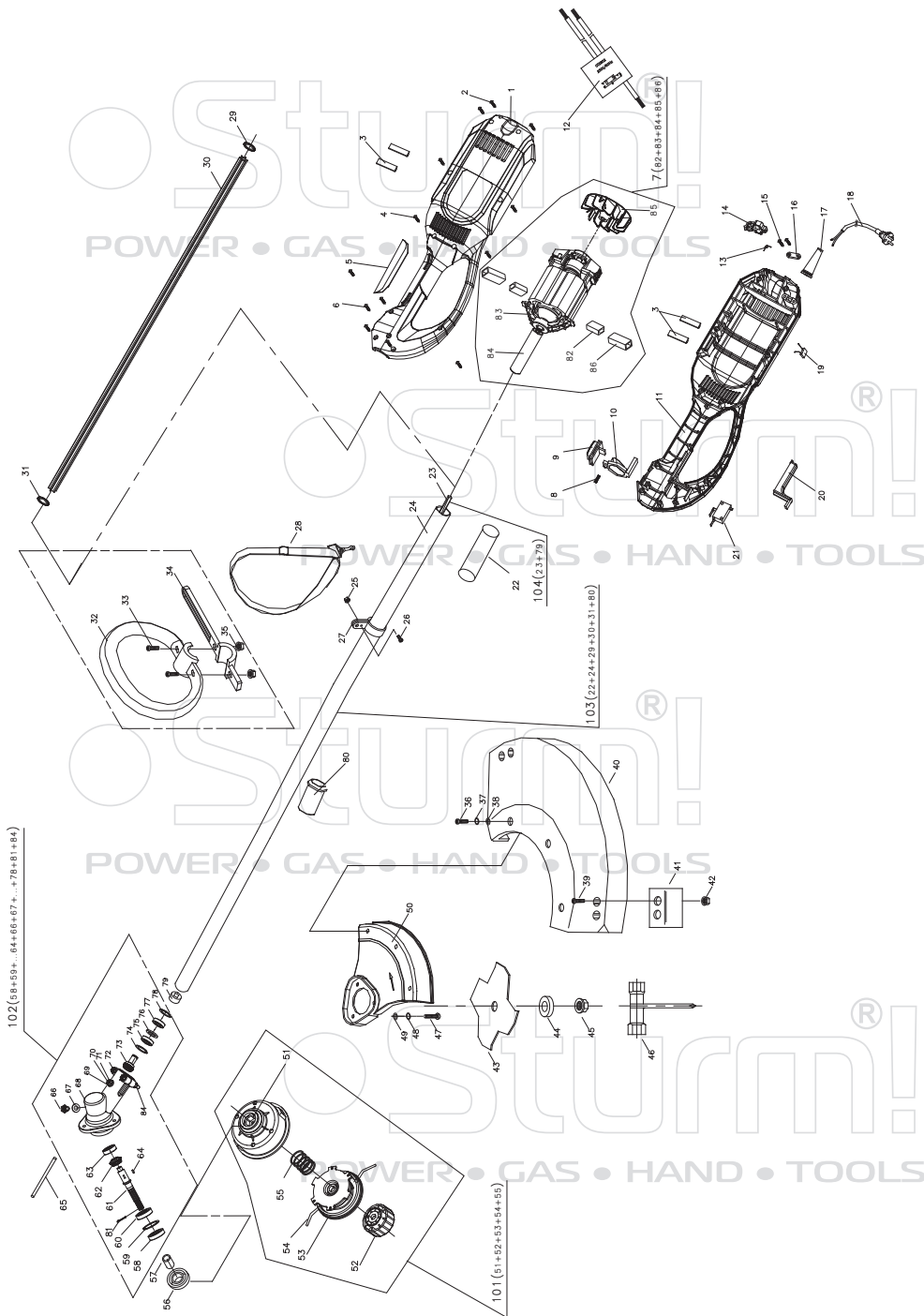


GT3512D



NO.	DESCRIPTION	NO.	DESCRIPTION	NO.	DESCRIPTION
1	RIGHT ENCLOSURE	42	HEXAGON NUT	82	CARBON BRUSH
2	TAPPING SCREW	43	BLADE FOR FRUTEX(4Z)	83	BRUSH HOLDER
3	RUBBER MAT	44	LOWER PLATE	84	CABLE DRIVE GEAR
4	TAPPING SCREW	45	HEXAGON NUT	85	FAN
5	HANDLE COVER	46	WRENCH ASSEMBLY	86	BRUSH COPPER BUSHING
6	TAPPING SCREW	47	SCREW	101	TRIMMER HEAD ASSEMBLY(51+52+53+54+55)
7	MOTOR ASSEMBLY(82+83+84+85+86)	48	SPRING SHIM	102	GEAR BOX ASSEMBLY(58+59+...64+66+67+...78+81+84)
8	PRESS SPRING	49	PLAIN WASHER	103	CONNECTION TUBE ASSEMBLY(22+24+29+30+31+80)
9	PUSH KNOB	50	BLADE HEAD COVER	104	FLEXIBLE SHAFT ASSEMBLY(23+79)
10	LIMITING TACH	51	TRIMMER HEAD BASE		
11	LEFT ENCLOSURE	52	LOCK HEAD ASSEMBLY		
12	PCB	53	TRIMMER HEAD COVER ASSEMBLY		
13	TWIST SPING	54	NYLON LINE		
14	HOOK FOR CORD	55	PRESS SPRING		
15	TAPPING SCREW	56	BASE PLATE		
16	CORD ANCHORAGE	57	STEEL SLEEVE		
17	CORD SLEEVE	58	GLAND		
18	POWER CORD & PLUG	59	CIRCLIP		
19	CAPACITOR	60	BEARING6002Z		
20	SWITCH TRIGGER	61	SHAF		
21	SWITCH	62	BIG GEAR		
22	SOFT HANDLE COVER	63	BEARING629Z		
23	FLEXIBLE SHAFT	64	KEY		
24	CONNECTION TUBE	65	LITTLE CLUB		
25	HEXAGON NUT	66	BOLT		
26	SCREW	67	PLAIN WASHER		
27	HOOK FOR BELT	68	GEAR BOX		
28	BELT	69	BOLT		
29	SET COLLAR	70	PLAIN WASHER		
30	POSITION TUBE	71	SPRING SHIM		
31	SET COLLAR	72	BOLT		
32	ASSISTANT HANDLE	73	SMALL GEAR		
33	SCREW	74	CIRCLIP		
34	ASSISTANT HANDLE COVER	75	BEARING6900		
35	HEXAGON NUT	76	WASHER		
36	SCREW	77	BEARING6900		
37	SPRING SHIM	78	CIRCLIP		
38	PLAIN WASHER	79	CONNECTION SQUARE HEAD		
39	SCREW	80	TUBE FOR ASSISTANT HANDLE		
40	TRIMMER HEAD COVER	81	COTTER PIN		
41	BLADE				

ST20100902-01