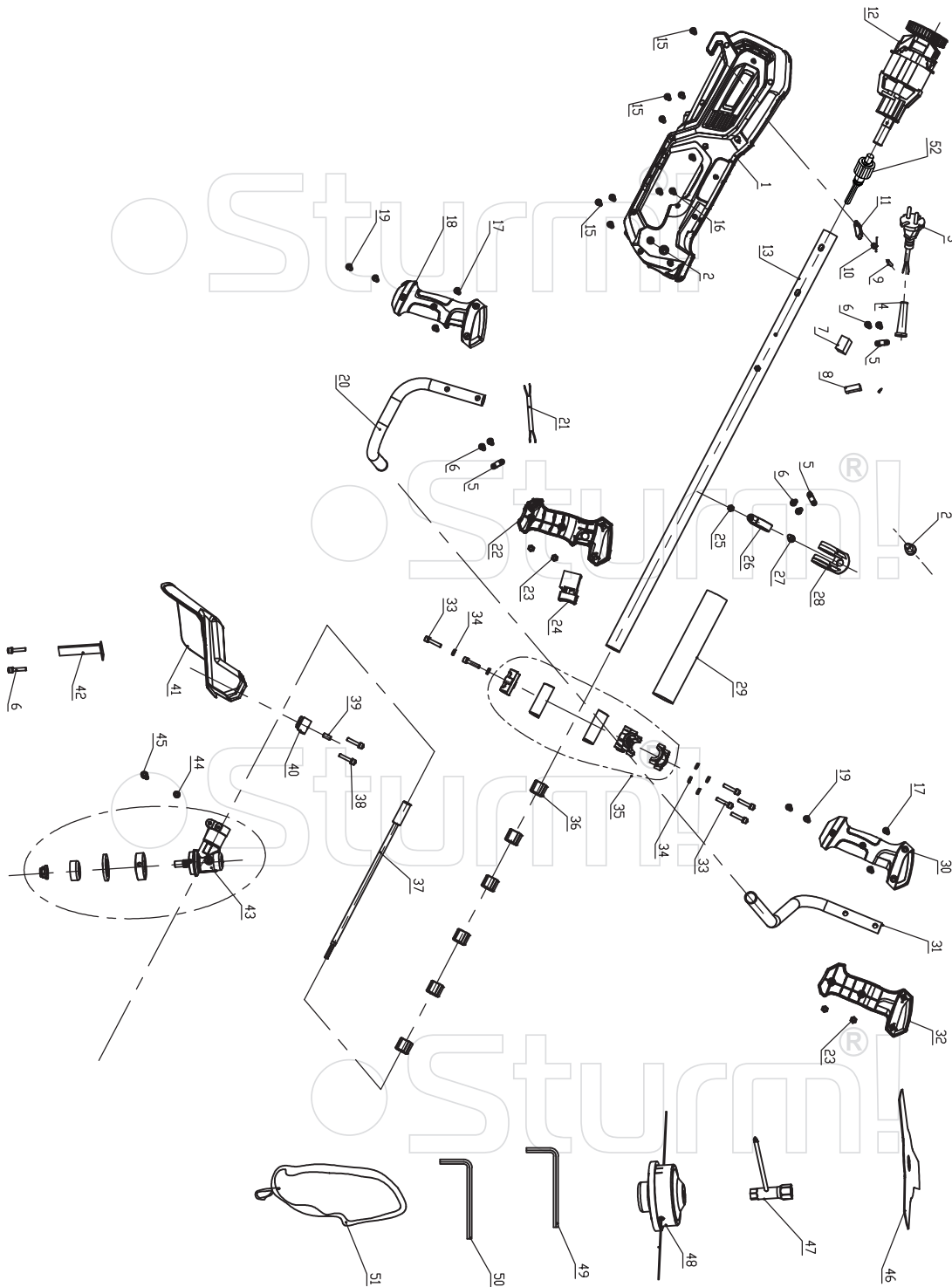


GT35180P



NO.	DESCRIPTION
1	HOUSING
2	SCREW M5*14
3	CABLE
4	CABLE PROTECTOR
5	CABLE ANCHORAGE
6	SCREW ST4*12
7	SOFT START
8	CAPACITOR
9	PIN \varnothing 4X40
10	TORSIONAL SPRING
11	CABLE HOOK
12	MOTOR ASSEMBLY
13	STEEL TUBE ASSEMBLY
15	SCREW ST4*16
16	SCREW ST3*12
17	SCREW ST5*16
18	RIGHT HANDLE 2
19	SCREW M4*30
20	RIGHT STEEL TUBE
21	CABLE
22	RIGHT HANDLE 1
23	NUT M4
24	SWITCH
25	NUT M5
26	LIFTING RING FIXING RING
27	SCREW M5*16
28	LIFTING RING
29	SPONGE TUBE
30	LEFT HANDLE 2
31	LEFT STEEL TUBE
32	LEFT HANDLE 1
33	SCREW M6*20
34	\varnothing 6 SPRING WASHERS
35	CONNECTOR
36	OIL BEARING
37	HARD SHAFT
38	SCREW M6*25
39	RIVET 4X6
40	GUARD PRESS BOARD
41	GUARD
42	GUARD BLADE
43	GEAR BOX ASSEMBLY
44	SCREW M5*12
45	SCREW M5*25
46	THREE TEETH BLADE
47	WRENCH
48	SPOOL
49	HEX KEY S=5
50	HEX KEY S=4
51	DOUBLE HARNESS
52	GEAR SHAFT