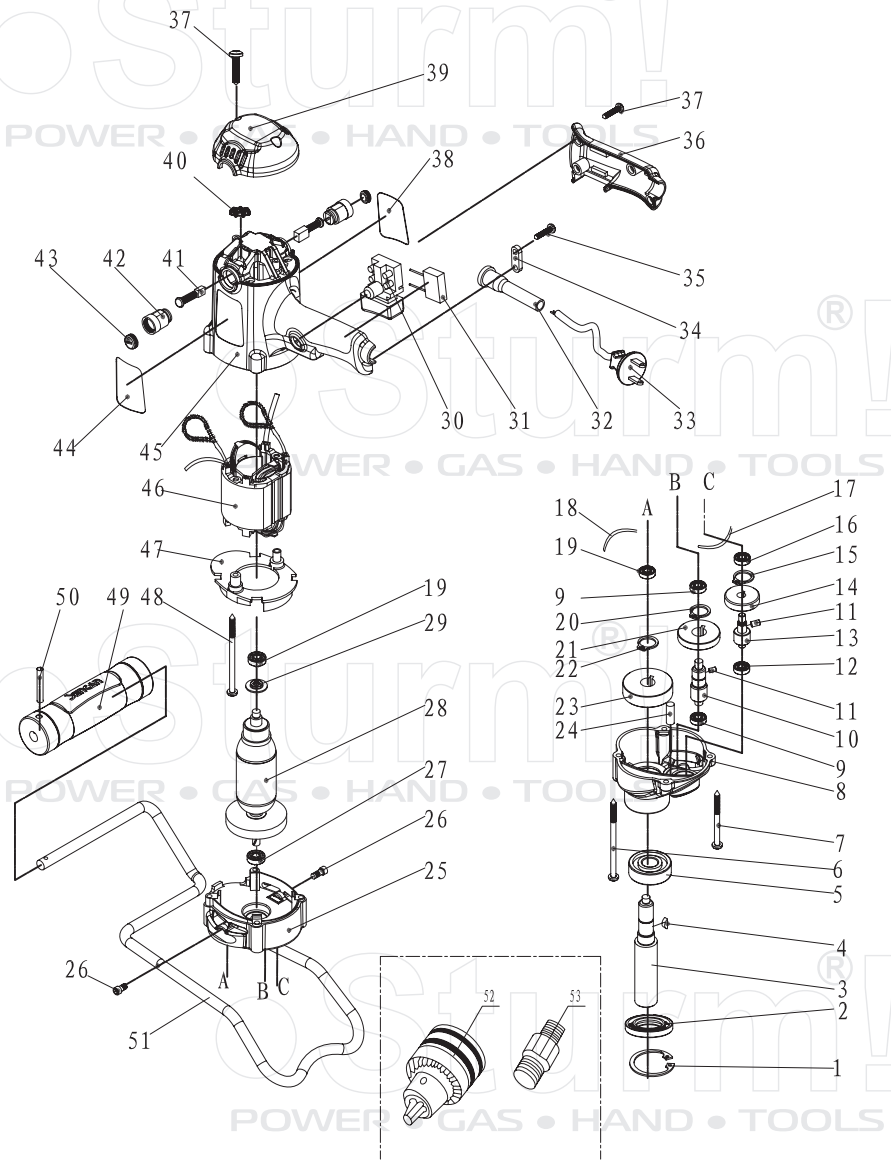


ID2095M



NO.	DESCRIPTION	NO.	DESCRIPTION
1	CIRCLIP FOR HOLE	28	ROTOR
2	OIL SEALED WASHER	29	INSULATION WASHER
3	OUTPUT SPINDLE	30	SWITCH
4	WOODRUFF KEY	31	CAPACITOR
5	BEARING 6002	32	CORD SLEEVE
6	SCREW	33	CORD & PLUG
7	SCREW	34	CORD ANCHOR
8	GEAR BOX	35	SCREW
9	BEARING 607	36	HANDLE COVER
10	THIRD CLASS DRIVEN GEAR	37	SCREW
11	COLUMN PIN	38	NAMEPLATE
12	BEARING 626	39	HOURING REAR COVER
13	SECOND GEAR SHAFT	40	INDUCTOR
14	FIRST DRIVEN GEAR	41	CARBON BRUSH
15	CIRCLIP FOR SHAFT	42	BRUSH HOLDER
16	BEARING 606	43	BRUSH COVER
17	RUBBER ARC	44	TRADEMARK
18	RUBBER ARC	45	HOUSING
19	BEARING 627	46	STATOR
20	CIRCLIP FOR SHAFT	47	AIR DEFLECTOR
21	SECOND DRIVEN GEAR	48	SCREW
22	CIRCLIP FOR SHAFT	49	SIDE HANDLE
23	BIG GEAR	50	COLUMN PIN
24	COLUMN PIN	51	MULTIFUNCTION BRACKET
25	MIDDLE COVER	52	COLLET
26	BOX HEX BOLT	53	COUPLER
27	BEARING 609		

RU20100401

