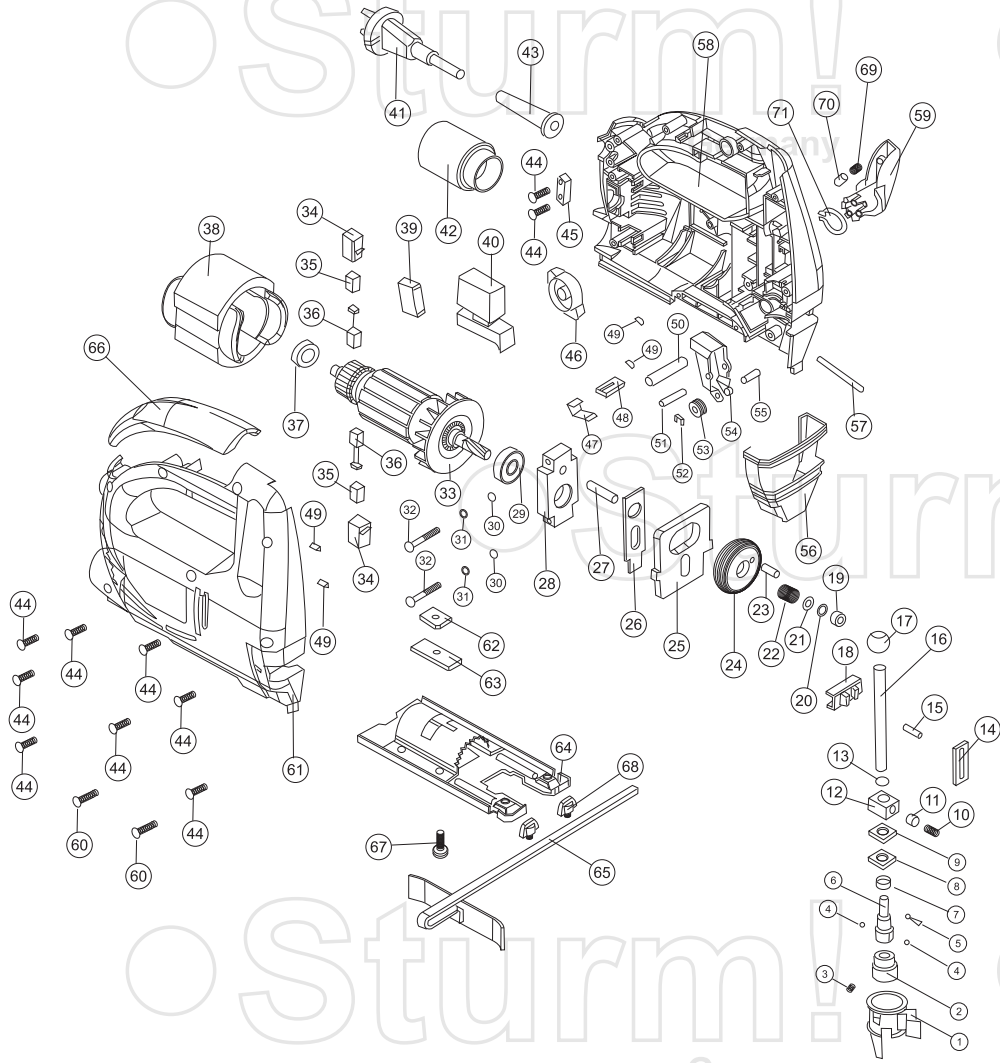


JS4075Q



| NO. | DESCRIPTION | NO. | DESCRIPTION |
|-----|------------------------------|-----|---------------------------|
| 1 | QUICKLY CHANGE BLADE SPANNER | 37 | BEARING 608 |
| 2 | BLADE HOLDER I | 38 | STATOR |
| 3 | PIN II | 39 | CAPACITOR |
| 4 | STEEL BALL | 40 | SWITCH |
| 5 | PIN I | 41 | CORD&PLUG |
| 6 | BLADE HOLDER II | 42 | DUST TUBE |
| 7 | PLATE SPRING | 43 | CORD SLEEVE |
| 8 | DUSTPROOF BLOCK I | 44 | TAPPING SCREW ST4X16 |
| 9 | DUSTPROOF BLOCK SPLINT | 45 | CORD ANCHORAGE |
| 10 | RESETTING SPRING | 46 | VARIABLE SPEED SWITCH |
| 11 | SPRING PIN | 47 | RESETTING SPRING SHEET |
| 12 | HOLDER FOR SAW ARM (DOWN) | 48 | DUSTPROOF BLOCK II |
| 13 | CIRCLIP FOR SHAFT(Ø 8) | 49 | PENDULUM ADJUSTABLE SHAFT |
| 14 | FIXING FOR SAW ARM | 50 | PIN |
| 15 | PIN(Ø 4X16) | 51 | PENDULUM SHAFT |
| 16 | SAW ARM | 52 | CIRCLIP FOR SHAFT(Ø4) |
| 17 | HOLDER FOR SAW ARM | 53 | ROLLER |
| 18 | SLIDING WAY | 54 | ROLLING METAL GUIDE |
| 19 | ROLLER SLIDING BUSHING | 55 | ROLLER PIN |
| 20 | CIRCLIP FOR SHAFT(Ø 6) | 56 | PROTECTING GUARD |
| 21 | WASHER | 57 | RESETTING SPRING |
| 22 | NEEDLE BEARING | 58 | LEFT HOUSING |
| 23 | ECCENTRICITY SMALL SHAFT | 59 | PENDULUM SWITCH KNOB |
| 24 | BIG GEAR | 60 | TAPPING SCREW ST4X20 |
| 25 | BALANCE BLOCK | 61 | RIGHT HOUSING |
| 26 | LIFTING KNIFE PLATE | 62 | SQUARE NUT |
| 27 | PIN | 63 | CONNECTING PLATE |
| 28 | CENTER SUPPORT | 64 | BASE |
| 29 | BEARING 629 | 65 | GUIDE |
| 30 | WASHER(Ø 4) | 66 | HANDLE COVER |
| 31 | SPRING WASHER | 67 | HEX SCREW |
| 32 | TAPPING SCREW ST4X30 | 68 | WING SCREW |
| 33 | ROTOR | 69 | SPRING |
| 34 | BRUSH HOLDER | 70 | PIN |
| 35 | BRUSH BUSHING | 71 | CIRCLIP |
| 36 | CARBON BRUSH | | |

RU5111001