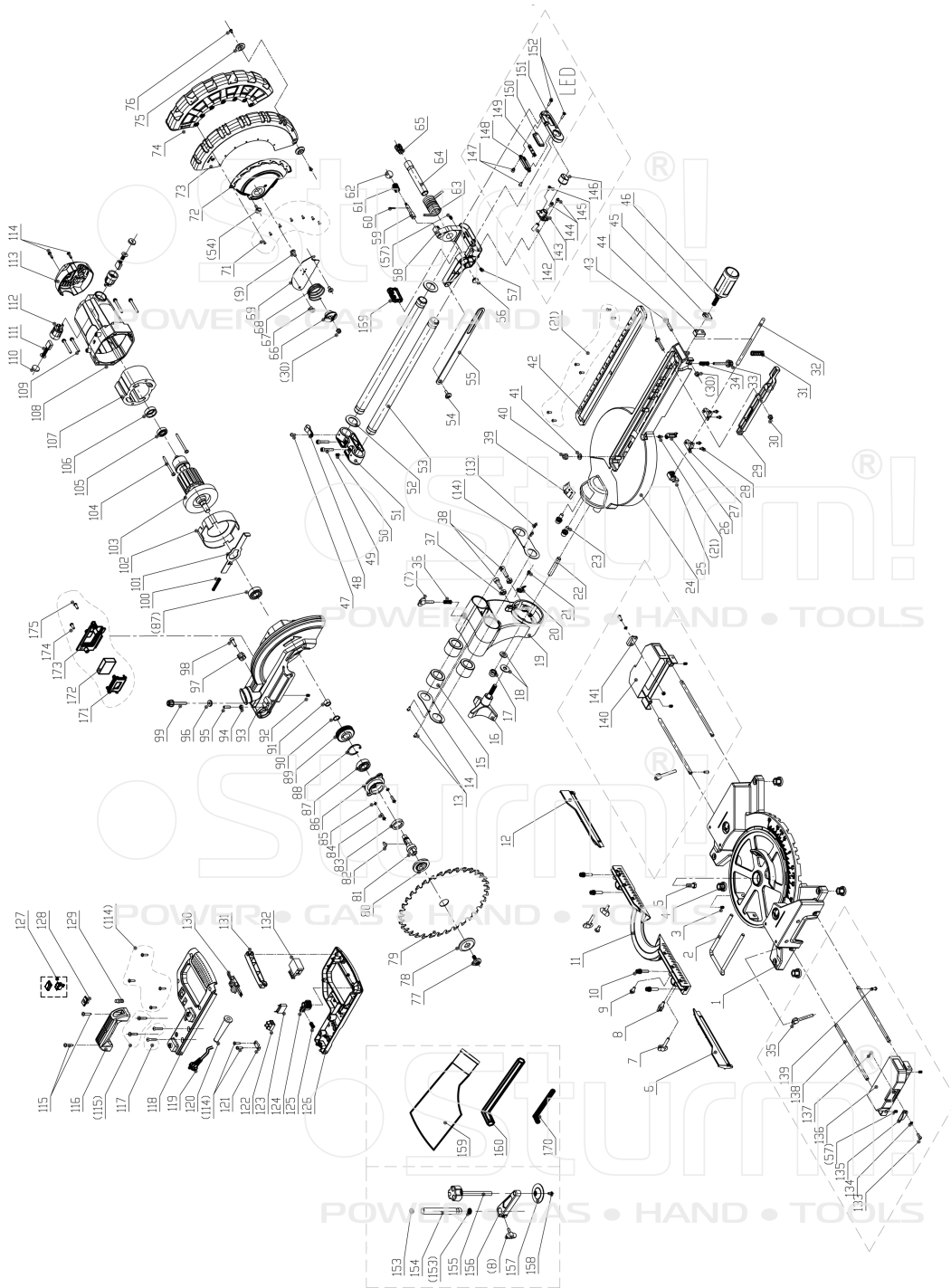


MS5525WM



NO.	DESCRIPTION	NO.	DESCRIPTION	NO.	DESCRIPTION
1	Base	58	Support	116	Cross Groove Pan Head Self Tapping Screw
2	Rear Support Frame	59	Lock Pin	117	Handle M5×303 set
3	Hexagon Socket Set Screw With Flat End M6×8	60	Spring Pin ø2.5×16	118	Above Handle
4	Plum Rubber Foot	61	Lock Pin Spring ø8.4×ø0.8×16 screw pitch4.5	119	Cable 1mm²
5	Hexagon Head Bolt M8×20	62	Ball Nut	120	Cable Jacket
6	Left Active Rest	63	Big Torsional Spring ø18×ø13×112	121	Line Pressing Board
7	Butterfly Screws M6×30	64	The Connecting Shaft	122	Wiring Row 3 rows
8	Butterfly Screws M6×15	65	Clamp Wire Plug	123	Capacitance 0.33µF
9	Pan Head Screw With Cross Groove M6×14	66	Transparent Hood Clamp	124	Switch Self-locking Button
10	Hexagon Socket Cap Screw M6×30 3 set	67	Pan Head Screw With Cross Groove M6×10	125	Button Spring ø8×ø0.6×14 screw pitch4
11	Shelf	68	Large Transparent Housing Spring	126	Bottom Handle
12	Right Active Rest	69	Large Hood	127	Two speed Switch
13	Pan Head Screw With Cross Groove M4×10	71	Rivet ø3×7	128	Ejector Seat
14	Straight Bearing End Cover t=1.5	72	Transparent Cover Guard	129	Jector
15	Linear Bearing 254035	73	Transparent Cover	130	Circuit Board
16	Angle Lock Handwheel Extension length of screw43	74	Transparent Cover Coat	131	Switch Trigger
17	Type 2 Non-metallic Hexagon Lock Nut M10	75	Pulley	132	Switch KR5A
18	Gasket ø10×ø25×2	76	Cross Groove Pan Head With Pad Tapping Screw ST4×10	133	Pan Head Screw With Cross Groove M5×14
19	Connecting Base	77	Saw Blade Fixing Screw M8×20_8.8	134	Spring Washers ø5
20	Oblique Pointer	78	Outer Pressing Plate	135	Left Wing Flap
21	Cross Recess Pan Head Screw M4×10 3 set	79	Blade	136	Left Wing Flap
22	Hexagon Socket Set Screw With Flat End M10×60	80	Inner Pressing Plate	137	Type 2 Non-metallic Hexagon Lock Nut M5
23	Hexagon Socket Cap Screws M8×25 3set	81	Output Shaft	138	Extension Rod ø8×200
24	Disk	82	Woodruff Key 5×16	139	Pan Head Screw With Cross Groove M5×10
25	Clutch Block	83	Skeleton Oil Seal ø24×ø32×6.5	140	Right Wing
26	Disk Pointer	84	Countersunk Head Screw With Cross Recess M5×18	141	Right Wing Flap
27	Disc Locking Rod Fixing Seat	85	Cup Mat ø5	142	Laser Head
28	Cross Recess Pan Head Screw M5×10 3set	86	Front Cover	143	Laser Bench
29	Plastic Retaining Rod	87	Bearing 6202RS	144	Pan Head Screw With Cross Groove M4×143 set
30	Type 2 Non-metallic Hexagon Lock Nut M6	88	Elastic Retainer For Holes ø35	145	Cross Countersunk Head Tapping Screw ST4.2×12/F
31	Fixed Bar Spring ø10.8×ø1.2×35 screw pitch6	89	Big Gear Wheel	146	Laser Transparent Cover
32	Disc Locking Lever ø8	90	Elastic Retaining Ring For Shaft ø15	147	Self Tapping Screw With Cross Grooves ST4×10
33	Lock Knob M6×40	91	Needle Roller Bearing HK1210	148	Led Pressing Plate
34	Switch Trigger Spring ø7.5×ø0.8×36 screw pitch5	92	Hexagon Socket Set Screw With Flat End M6×10	149	Led Light
35	Butterfly Screws M6×40	93	Head Housing	150	Led Transparency
36	Pull Rod Locks The Spring ø8×ø0.8×20 screw pitch4	94	Nut M6	151	Led Light Bench
37	Nut M8	95	Hexagon Socket Set Screw With Flat End M6×20	152	Countersunk Head Screw With Cross Recess M4×18
38	Hexagon Socket Cap Screw M8×30	96	Knurled Thin Nut M6	153	Fixed Rod Cover
39	Connecting Base Label PVC/3M	97	Collision Block	154	Fixed Rod ø16×ø11×120
40	Type 2 Non-metallic Hexagon Lock Nut M8	98	Hexagon Socket Cap Screw M6×20	155	Handwheel
41	Flat Gasket ø8.5×ø16×1.6	99	Lock Knob M6×40	156	Clamp Block
42	Incision	100	Shaft Lock Spring	157	Embedded Iron
43	Pan Head Screw With Cross Groove M6×35	101	Shaft Lock Plate t=2	158	Non-standard Screws M5×7
44	Locking Top Piece	102	Wind Circle	159	Bag Spring
45	Side Handle Support Block	103	Rotor ø54.3×50	160	Hexagon Wrench 6mm, L=120
46	9086side Handle	104	Cross Groove Pan Head Self Tapping Screw ST5×65	170	Hexagon Wrench 3mm
47	Pan Head Screw With Cross Groove M5×10	105	Bearing 6000RS	171	Governor Mounting Seat
48	Line Buckle	106	Bearing Housing	172	Speed Control Module
49	Hexagon Socket Cap Screw M6×30	107	Stator ø95×50	173	Governor Cover Plate
50	Hexagon Socket Set Screw With Flat End M5×6	108	Machine Housing	174	Large Pan Head Screw With Cross Groove M5×203 set
51	Rod Rear Cover	109	Pan Head Screw With Cross Groove M5×453 set	175	Large Pan Head Screw With Cross Groove M5×253 set
52	Rod Gasket	110	Brush Cover		
53	Rod ø25×ø19×407	111	Electric Brush 7X17		
54	Large Pan Head Screw With Cross Groove M5×16	112	Brush Handle		
55	Connecting Rod	113	Machine Rear Cover		
56	The Connecting Shaft Cover	114	Cross Groove Pan Head Self Tapping Screw ST4×16/F		
57	Hexagon Socket Set Screw With Flat End M6×6	115	Cross Groove Pan Head Self Tapping Screw ST5×25		