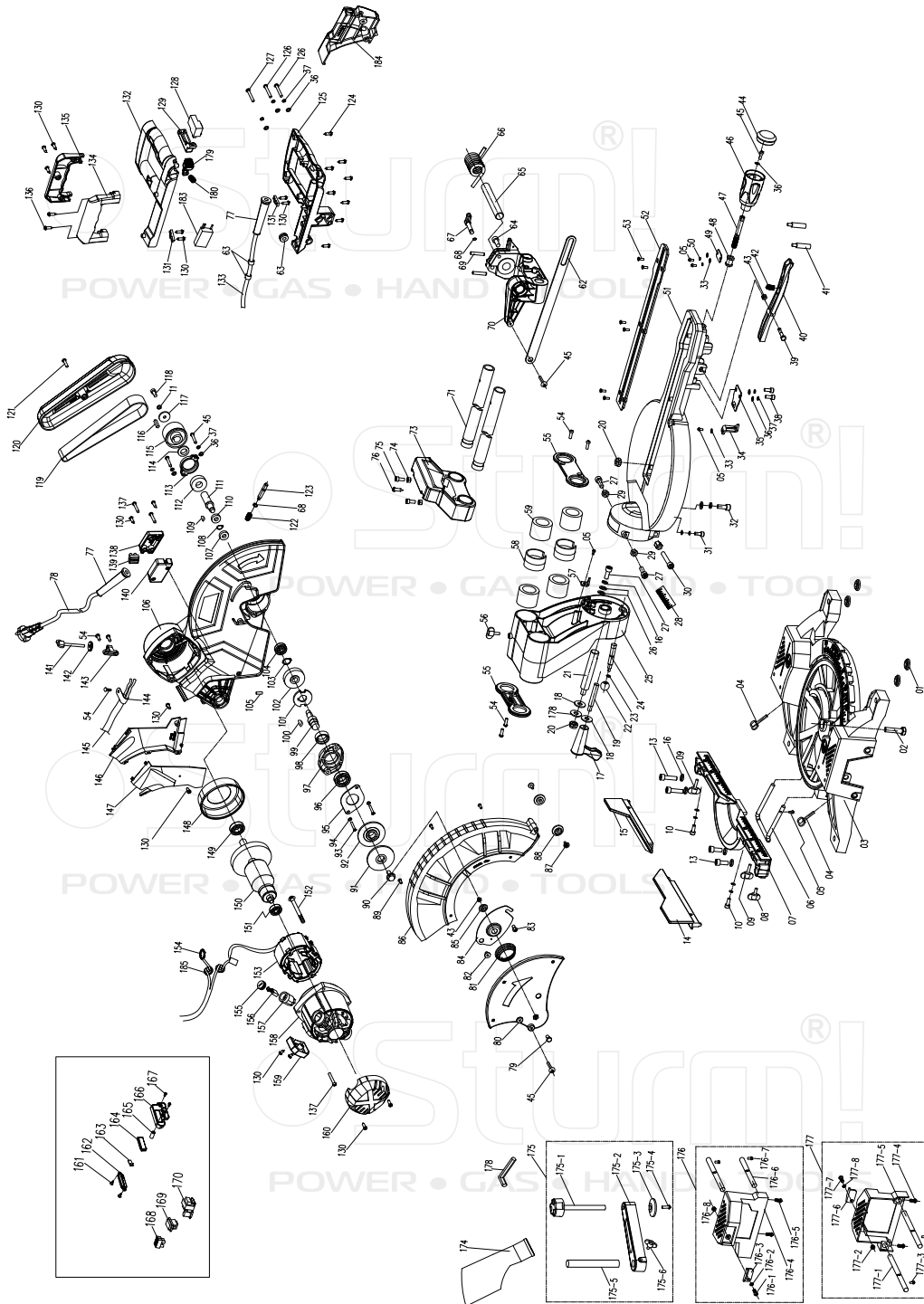


# MS55305BL



NO.	DESCRIPTION	NO.	DESCRIPTION	NO.	DESCRIPTION
1	FOUNDATION WASHER	76	5*16 SLOTTED SELF TAPPING SCREW	148	FAN SHROUD
2	M10*40 OUTER HEXAGON SCREW	77	CABLE JACKET	149	6002 BEARING
3	BASE	78	CABLE	150	ROTOR
4	M6*40 BUTTERFLY SCREW	79	M6*12 OUTER HEXAGON SCREW	151	6200 BEARING
5	M4*10 SPHERICAL PHILLIP'S SCREW	80	TRANSPARENT COVER	152	ST4.8*70 CROSS RECESSED PAN HEAD TAPPING SCREW
6	102R REAR SUPPORT FRAME	81	BIG SPRING OF TRANSPARENT COVER	153	STATOR
7	BACK FRAME	82	10 LATHES M6*7 BIG FLAT HEAD SHCS	154	TENSION SPRING
8	M6*8 BUTTERFLY SCREW	83	M6*10 CROSS RECESSED PAN HEAD SCREW	155	BIG COVER SHEET OF TRANSPARENT COVER
9	M6*30 BUTTERFLY SCREW	84	BIG COVER SHEET OF TRANSPARENT COVER	156	CARBON BRUSH
10	M6*20 SOCKET HEAD CAP SCREW	85	FIXED SLEEVE	157	BRUSH HOLDER
11	6 SPRING WASHER	86	TRANSPARENT COVER	158	MACHINE ENCLOSURE
12	6 FLAT WASHER	87	4*15 TAPPING SCREW WITH GASKET	159	WIRE PRESSING BOX
13	M8*20 SOCKET HEAD CAP SCREW	88	PULLEY	160	REAR SHADE
14	LEFT MOVABLE BACK FRAME	89	M4*14 SPHERICAL PHILLIP'S SCREW	161	ST4.2*10COUNTERSUNK HEAD TAPPING SCREWS
15	RIGHT MOVABLE BACK FRAME	90A	M8 * 20 ALLEN CUSHIONED AGAINST TOOTH (8.8)	162	THE LED HOLDER
16	8 SPRING WASHER	91	EXTERNAL COMPRESSIVE PLATE	163	LED
17	ANGULAR LOCKING HANDLE	92	INTERNAL COMPRESSIVE PLATE	164	TRANSPARENCY
18	Φ10*Φ25*2 GASKET	93	M5*25 GRUB SCREW	165	LASER SWITCH
19	ANGULAR CLAMP AXIS	94	5 BOWEL-SHAPED WASHER	166	THE LASER BOX
20	M10 LOCK NUT	95	GLAND	167	M4X10CROSS PAN HEAD SCREW
21	LOCKING AXIS	96	6003 BEARING	168	TRANSPARENT COVER COAT
22	1240 BALL NUT	97	FRONT COVER	169	LINE BANK
23	O-SHAPED RING (9*2)	98	OIL SEAL	170	LASER SWITCH
24	RIGHT-ANGLE DOWEL PIN	99	OUTPUT SHAFT	171	TRANSPARENT COVER COAT
25	CONNECTING BASE	100	5*16 WOODRUFF KEY	174	DUST BAG PARTS
26	8 FLAT WASHER	101	SELF-LOCKING PLATE	175	CLAMPING BLOCK PARTS
27	M8*25 SOCKET HEAD CAP SCREW	102	LARGE GEAR	175-1	HAND WHEEL
28	SCALE PLATE OF CONNECTING BASE	103	16 CIRCLIP FOR SHAFTS	175-2	CLAMPING BLOCK
29	M9 NUT	104	6000 BEARING	175-3	JAW IRON
30	M8*50 SOCKET HEAD CAP SCREW	105	M6X10 STUD SCREW	175-4	6 LATHES M5*7 PAN HEAD SCREW
31	M6*25 SOCKET HEAD CAP SCREW	106	HEAD SHELL	175-5	FIXED ROD
32	M8*25 SOCKET HEAD CAP SCREW	107	699 BEARING	175-6	M6*15 BUTTERFLY SCREW
33	4 FLAT WASHER	108	12 CIRCLIP	175-7	THE CLAMPING BLOCK
34	POINTER	109	4*13 WOODRUFF KEY	175-8	THE CLAMPING PIECE OF SPRING
35	LIMIT ROD	110	SMALL GEAR	176	LEFT SHELTER PART
36	5 FLAT WASHER	111	INTERMEDIATE SHAFT	176-1	M5*14 PHILLIPS BIG HEAD SCREW
37	5 SPRING WASHER	112	6202 BEARING	176-2	5 SPRING WASHER
38	M5*14 SOCKET HEAD CAP SCREW	113	BEARING GLAND	176-3	LEFT SHELTER MOVABLE PLATE 1
39	M6*35 OUTER HEXAGON SCREW	114	Φ15*Φ22*2 EPOXY GASKET	176-4	LEFT SHELTER 1
40	FIXED ROD	115	BELT PULLEY	176-5	M5*12 PHILLIPS BIG HEAD SCREW 2
41	SUPPORT ROD	116	5*20 SQUARE KEY	176-6	EXTENSION ROD 2
42	SPRING	117	Φ6*Φ25*3 PLAIN WASHER	176-7	M4*10 SPHERICAL PHILLIPS SCREW 2
43	M6 LOCK NUT	118	M6*20 LEFT HAND SOCKET HEAD CAP SCREW	176-8	M5 LOCK NUT 1
44	SIDE HANDLE CAP	119	BELT	177	RIGHT SHELTER PART 1
45	M5*16 CROSS RECESSED PAN HEAD SCREW	120	BELT COVER	177-1	EXTENSION ROD 2
46	SIDE HANDLE	121	M5*20 CROSS RECESSED PAN HEAD SCREW	177-2	M5 LOCK NUT 1
47	LOCKING ROD	124	ST3.9*16 CROSS RECESSED PAN HEAD TAPPING SCREW	177-3	M4*10 SPHERICAL PHILLIPS SCREW 2
48	M10*20 CENTER SLOTTED NUT	125	LOWER HANDLE	177-4	M5*12 PHILLIPS BIG HEAD SCREW
49	LOCK WASHER	126	M5*35 CROSS RECESSED PAN HEAD SCREW	177-5	RIGHT SHELTER
50	4 SPRING WASHER	127	M5*45 CROSS RECESSED PAN HEAD SCREW	177-6	RIGHT SHELTER MOVABLE PLATE
51	DISC	128	SWITCH	177-7	M5*14 PHILLIPS BIG HEAD SCREW
52	TABLE INSERT	129	SWITCH BUTTON	177-8	5 SPRING WASHER
53	M4*10 GRUB SCREW	130	ST3.9*14 CROSS RECESSED PAN HEAD TAPPING SCREW	178	ALLEN KEY 6 X 120
54	M5*10 CROSS RECESSED PAN HEAD SCREW	131	TENSION DISC	179	SINCE THE LOCK BUTTON SWITCH
55	END COVER	132	UPPER HANDLE	180	BUTTON IN THE SPRING
56	M6*25 BUTTERFLY SCREW	133	JUNCTION LINE	183	0.22UF CAPACITANCE
57	CHAMFERING POINTER	134	LEFT LIFTING HANDLE	184	LINE-THROUGH SHIELD PLATE
58	DISTANCE SLEEVE OF LINEAR BEARING	135	RIGHT LIFTING HANDLE	185	MAGNET RING
59	LINEAR BEARING	136	ST3.9*20 CROSS RECESSED PAN HEAD TAPPING SCREW		
60	Φ7*Φ17*1 PLAIN WASHER	137	M5*25 SPHERICAL PHILLIP'S SCREW		
61	Φ10*Φ5.5*4 STEEL BUSHING	138	CONNECTION AXIS LID		
62	CONNECTING ROD	139	LINE BANK		
63	JACKET	140	JUNCTION BOX		
64	M8*30 SOCKET HEAD CAP SCREW	141	M6*50 BUTTERFLY SCREW		
65	CONNECTION AXIS	142	M6 KNURLED THUMB NUT (THIN TYPE)		
66	BIG TORSIONAL SPRING	143	DEPTH LIMIT FRAME		
67	105A SELF-LOCKING PIN TOGGLE BUTTON	144	STRAIN RELIEF BUSHING		
68	6 CIRCLIP FOR SHAFTS	145	JUNCTION LINE		
69	6*40 SPRING PIN	146	RIGHT DUST DISCHARGE COVER		
70	SUPPORT	147	LEFT DUST DISCHARGE COVER		
71	TENSION ROD				
73	TENSION ROD HANDLE				
74	M6 NUT				
75	M6*14 SOCKET HEAD CAP SCREW				