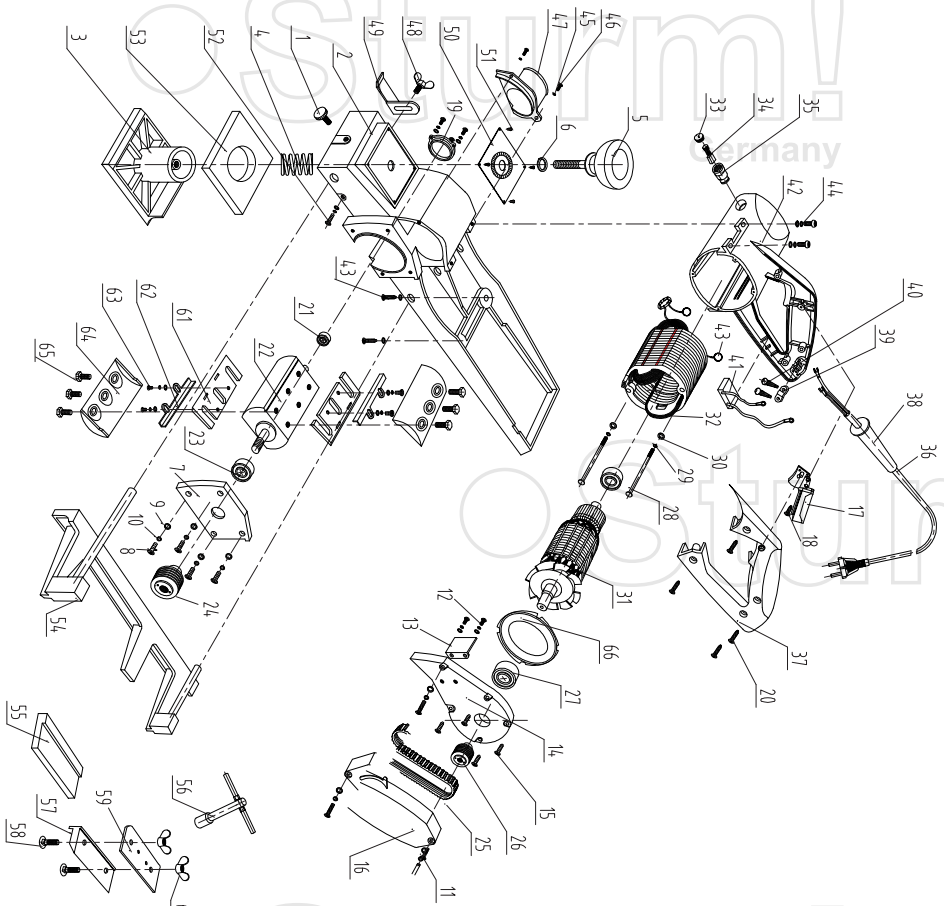


P1012



NO.	DESCRIPTION	NO.	DESCRIPTION
1	FIXED SCREW	34	CARBON BRUSH
2	HOUSING	35	BRUSH HOLDER
3	FRONT BOTTOM PLATE	36	CABLE & PLUG
4	SPRING	37	HANDLE COVER
5	ADJUSTABLE HANDLE	38	CABLE SLEEVE
6	WASHER	39	CABLE ANCHORAGE
7	ROTOR BLADE SHAFT	40	TAPPING SCREW ST4.2X12
8	SCREW M4X12	41	CAPACITOR
9	WASHER	42	MOTOR HOUSING
10	WASHER	43	CONNECTION RING
11	SCREW M4X25	44	SCREW M5X15
12	SCREW M4X25	45	WASHER 3
13	CURVING PLATE	46	SCREW M3X10
14	MOTOR COVER	47	DUST CONNECTOR
15	TAPPING SCREW ST4.8X25	48	WING SCREW
16	BELT COVER	49	ADJUSTABLE BRACKET
17	SWITCH	50	DEPTH INDICATOR
18	TAPPING SCREW ST4.2X10	51	RIVET 2X5
19	BEARING COVER	52	SCREW M4X18
20	TAPPING SCREW ST4.2X18.5	53	PAD
21	BEARING 608Z	54	GUIDE RULE
22	ROTOR BLADE	55	SETTING GAUGE
23	BEARING 6201Z	56	SOCKET
24	BIG WHEEL	57	SHARPENING FIXTURE
25	BELT	58	SCREW M6X30
26	SMALL WHEEL	59	BLADE RETAINER
27	BEARING 6200Z	60	WING NUT
28	SCREW M5X55	61	BLADE
29	WASHER 5	62	PRESSURE BOARD
30	WASHER 5	63	SCREW M4X5
31	ROTOR	64	COVER BOARD
32	STATOR	65	BOLT M6X20
33	BRUSH CAP	66	WIND GUARD

RU511101