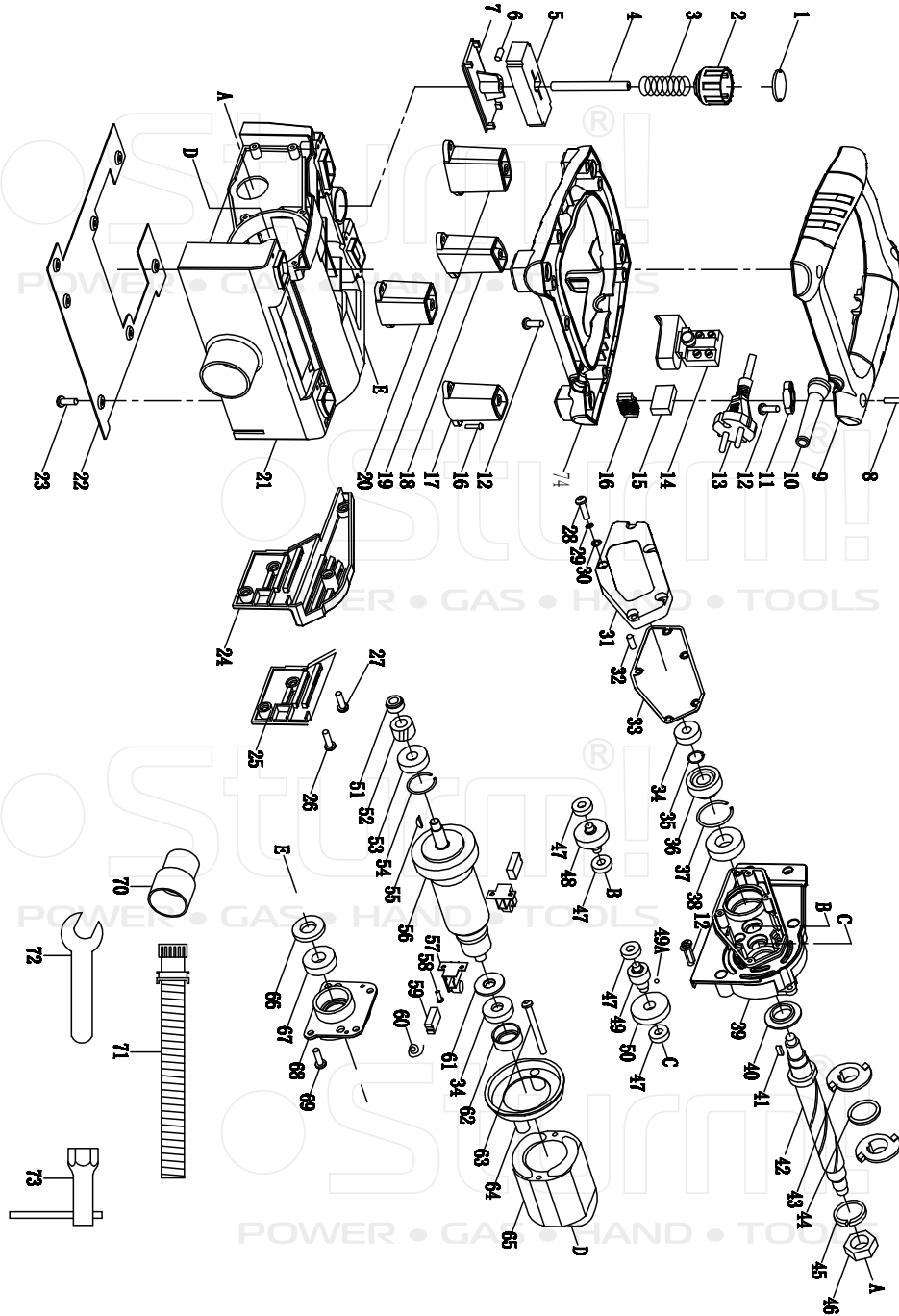


# P1014W



NO.	DESCRIPTION	NO.	DESCRIPTION
1	KNOB COVER	39	GEAR BOX
2	ADJUSTMENT KNOB	40	DUST RING
3	PRESSURE SPRING	41	KEY
4	ADJUSTMENT SCREW	42	BLADE SHAFT
5	FOAM PAD	43	BLADE
6	SCREWM4X6	44	BLADE WASH
7	ADJUSTMENT PLATE	45	SPRING PADM18
8	SCREW	46	SCREW M18
9	UP HANDLE	47	BEARING 607
10	SLEEVE	48	SECOND DRIVEN GEAR 27Z
11	PRESSURE BOARD.	49	SECOND DRIVING GEAR 16Z
12	SCREWST3.9X14	49A	BALL
13	CABLE	50	FIRST DRIVEN GEAR30Z
14	SWITCH	51	NUT M8
15	CAPACITOR	52	FIRST DRIVING GEAR 15Z
16	INDUCTOR	53	BEARING 6000
17	MACHINE BASE 1	54	HOLE RING 26
18	MACHINE BASE 2	55	KEY
19	MACHINE BASE 3	56	ROTOR
20	MACHINE BASE 4	57	CARBON BRUSH HOLDER
21	HOUSING	58	SCREW
22	STEEL BOARD	59	CARBON BRUSH
23	SCREWST3.9X14	60	SPRING
24	BACK COVER	61	ROTOR DUST RING
25	DUST COVER	62	BEARING SLEEVE
26	SCREWST3.9X25	63	SCREW
27	SCREWST3.9X30	64	WIND RING
28	SCREWM4X20	65	STATOR
29	SPRING PAD	66	SKELETON SEAL
30	FLAD PAD	67	BEARING 6001
31	GEAR BOX COVER	68	COVER
32	PIN	69	SCREWST5X16
33	PAPER PAD	70	CONNECT
34	BEARING 608-2RS	71	HORSE TUBE
35	CIRCLE RING	72	SPANNER
36	THIRD DRIVEN GEAR 28Z	73	SOCKET SPANNER
37	HOLE RING	74	DOWN HANDLE
38	BEARING 6002-2RS		