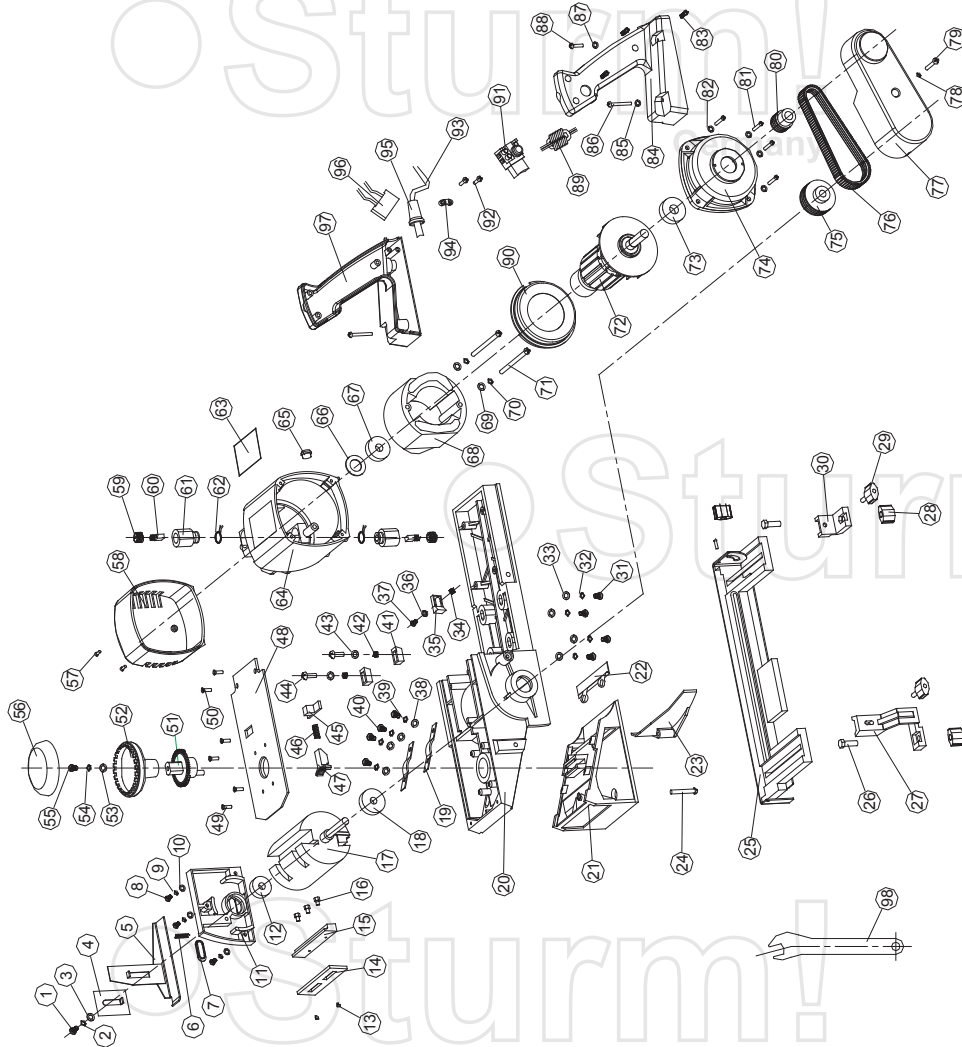


P1020



NO.	DESCRIPTION	NO.	DESCRIPTION
1	SCREW	50	SCREW
2	SPRING WASHER	51	GEAR
3	WASHER	52	HAND WHEEL BASE
4	FLANGE	53	WASHER
5	SOFT GUARD	54	SPRING WASHER
6	SPRING WASHER	55	SCREW
7	LITTLE COVER	56	HAND WHEEL COVER
8	SCREW	57	SCREW
9	SPRING WASHER	58	PLASTIC COVER
10	WASHER	59	HRUSH HOLDER CAP
11	BEARING BASE	60	CARBON BRUSH
12	BEARING 629	61	HOLDER
13	ECCENTRIC PIN	62	SPRING WASHER
14	BLADE	63	NAME PLATE
15	BOTTOM FLANGE	64	PLASTIC HOUSING
16	SCREW	65	PLASTIC PIPE
17	DRUM	66	SPRING WASHER
18	BEARING 6201	67	BEARING 6200
19	SPRING PLATE	68	STATOR
20	METAL BODY	69	WASHER
21	FRONT BASE	70	SPRING WASHER
22	FENDER	71	SCREW
23	ORIENTED FENDER	72	ROTOR
24	SCREW	73	BEARING 6201
25	GUIDE	74	COVER FOR MOTOR
26	BOLT M6*20	75	(BIG) V-PULLEY
27	BRACKET	76	BELT
28	CASTEL NUT	77	BELT COVER
29	CASTEL SCREW	78	WASHER
30	BRACKET	79	SCREW
31	SCREW	80	SMALL V-PULLY
32	SPRING WASHER	81	SCREW
33	WASHER	82	WASHER
34	SPRING	83	SCREW
35	ADJUST BLOCK	84	HANDLE COVER
36	WASHER	85	WASHER
37	SCREW	86	SCREW
38	WASHER	87	WASHER
39	SPRING WASHER	88	SCREW
40	SCREW	89	INDUCTOR
41	ADJUST BLOCK	90	WIND FENDER
42	SRPING	91	SWITCH
43	WASHER	92	SCREW
44	SCREW	93	CORD & PLUG
45	LEVER	94	CORD ANCHORAGE
46	SPRING	95	CORD SLEEVE
47	PLASTIC GEAR	96	CAPACITOR
48	PLATE	97	HANDEL BASE
49	SCREW	98	WRENCH