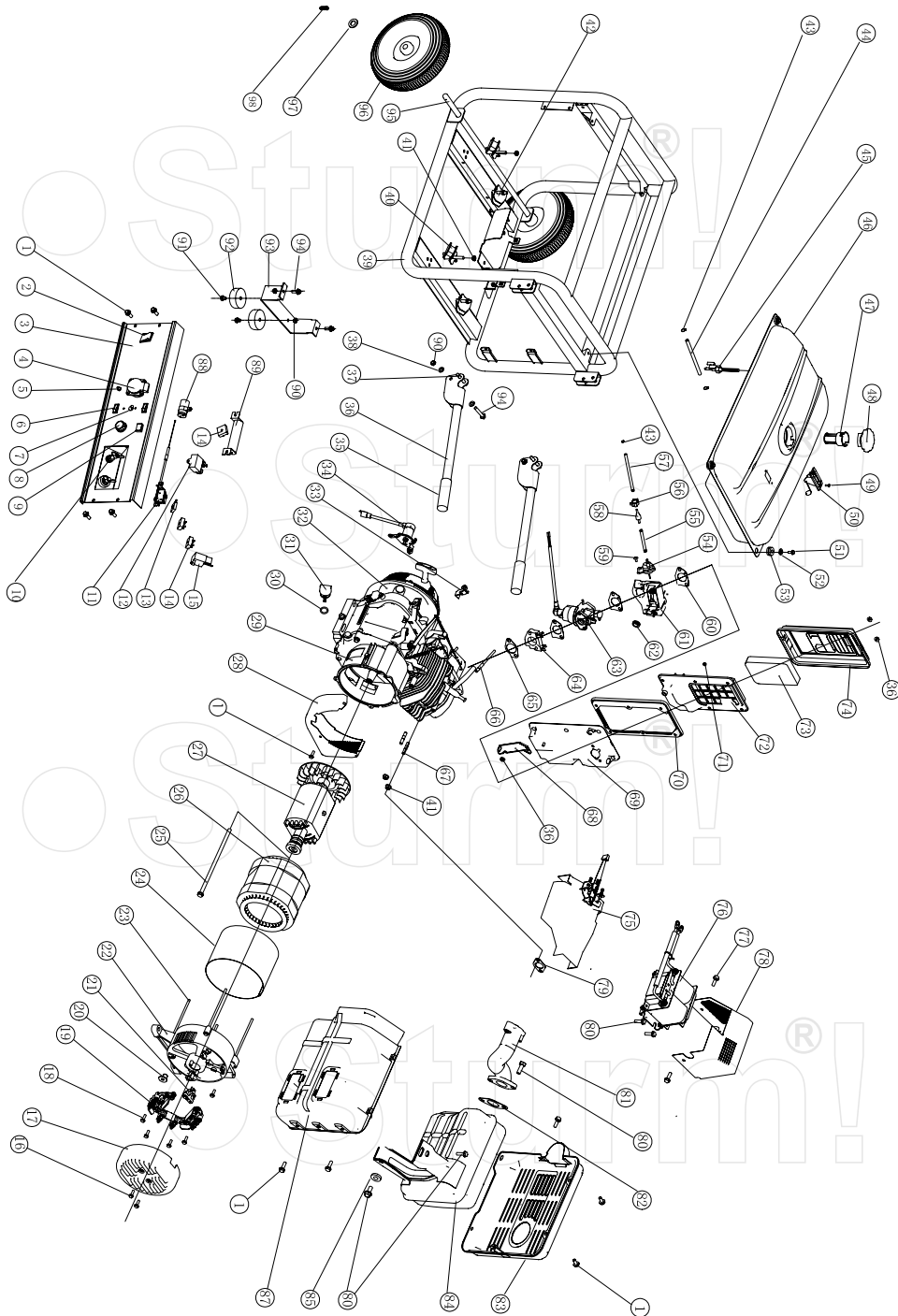
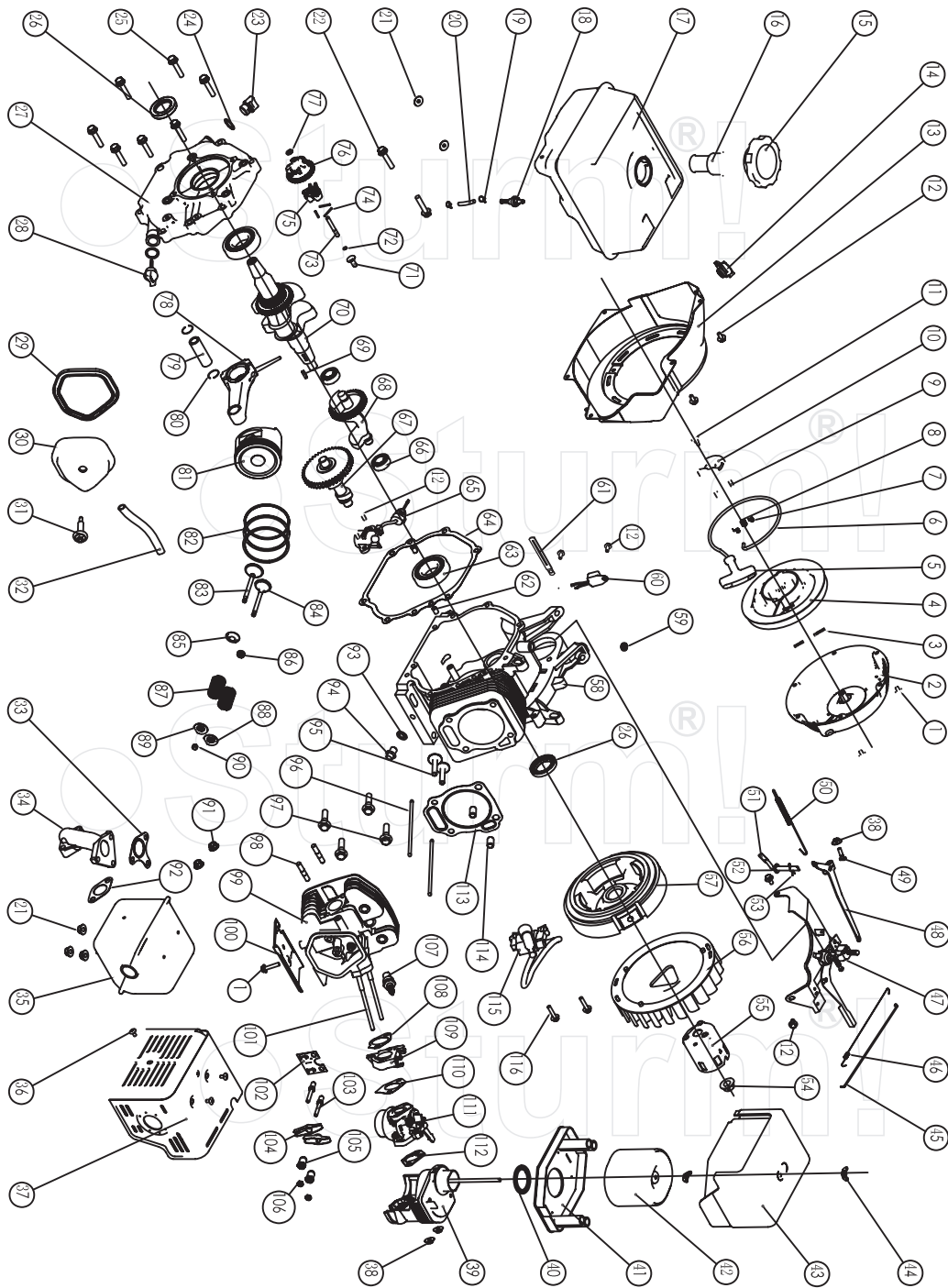


# PG8719W



NO.	DESCRIPTION	NO.	DESCRIPTION
1	FLANGE BOLTM6X12	50	FUEL METER ASSY
2	SWITCH	51	BOLT M6X25
3	CONTROL PANEL	52	WASHER Ø6
4	RECEPTACLE	53	RUBBER
5	EARTH BOLT	54	DIAPHRAGM ASSY.
6	SWITCH	55	GROMMET
7	AC.9.1A CIRCUIT BREAKERS	56	CLIP
8	RHEOSTAT	57	RUBBER TUBE
9	LAMP	58	VALVE
10	OUTPUT TERMINAL , WELDING	59	SCREW M5X10
11	SELECTOR	60	PACKING
12	CONTROLLER	61	STAY ASSY.
13	DIODE COMP	62	GROMMET
14	RECTIFIER	63	CARBURETOR
15	DIODE ASSY	64	CARBURETOR INSULATOR
16	FLANGE BOLTM5X10	65	CARBURETOR INSULATOR PACKING
17	END COVER	66	BOLT
18	FLANGE BOLTM5X16	67	BOLT
19	TERMINAL	68	AIR CLEANER STAY
20	INSULATING SEAR NEGATIVE	69	AIR CLEANER CASE COMP
21	BRUSH ASSY	70	AIR CLEANER SEAL
22	END COVER	71	NUT M5
23	FLANGE BOLTM6X179	72	SEPARATOR
24	STATOR COVER	73	ELEMENT
25	FLANGE BOLTM10X1.25X285	74	AIR CLEANER COVER COMP
26	STATOR ASSY	75	CONTROL ASSY
27	ROTOR COMP	76	REACTOR
28	COVER	77	FLANGE BOLTM6X8
29	CRANK CASE COVER	78	REACTOR COVER
30	O-RING	79	MUFFLER GASKET
31	OIL FILLER CAP	80	FLANGE BOLTM8X20
32	ENGINE	81	EX PIPE
33	WIRE CLIP	82	MUFFLER GASKET
34	CUT OFF INSTALLATION	83	MUFFLER OUTER PROTECTOR
35	HANDLE SHEATH	84	MUFFLER
36	HANDLE	85	BUSHØ8.5
37	PIN	87	MUFFLER INNER PROTECTOR
38	FLAT WASHER	88	CAPACITOR(100V 2200UF)
39	FRAME	89	RESISTANCE
40	BOTTOM RUBBER 1	90	NUT M8
41	NUT M10	91	BOLT M8X30
42	BOTTOM RUBBER 2	92	VIBRATION MOUNT
43	CLIP	93	SUPPORT LEG
44	FUEL TUBE	94	BOLT M8X20
45	FUEL COCK	95	AXLE (31.4 IN)
46	FUEL TANK	96	WHEEL
47	FUEL FILTER	97	WASHER Ø16
48	FUEL TANK CAP	98	RETAIN PIN 3.2X40
49	SCREW M5X6		



## ENGINE FOR PG8745 PG8755 PG87603 PG8719W

No.	DESCRIPTION	No.	DESCRIPTION	No.	DESCRIPTION
1	FLANGE BOLTM6X8	41	SILENCER NOSE	81	PISTON
2	RECOIL STARTER CASE COMP	42	AIR CLEAN ELEMENT	82	OIL SEAL SET COMP
3	STARTER RETURN SPRING	43	AIR CLEAN COVER		SECOND RING SET
4	RECOIL STARTER PULLEY	44	AIR CLEAN COVER NUT		FIRST RING SET
5	RECOIL STARTER KNOB	45	GOVERNOR ROD	83	EX, VALVE
6	RECOIL STARTER ROPE	46	THROTTLE RETURN SPRING	84	IN, VALVE
7	RATCHET SPRING	47	CONTROL ASSY	85	VALVE SPRING WASHER
8	RATCHET GUIDE SPRING	48	GOVERNOR ARM	86	VALVE OIL
9	RATCHET STARTER	49	GOVERNOR ARM BOLT	87	VALVE SPRING
10	RATCHET GUIDE	50	GOVERNOR SPRING	88	IN, VALVE SPRING RETAINER
11	RATCHET GUIDE BOLT	51	COVER ARM SHAFT	89	EX, VALVE SPRING RETAINER
12	FLANGE BOLTM6X12	52	WASHER8.2X17X0.8	90	VALVE ROTATOR
13	FAN CORER COMP	53	PIN CLIP	91	NUT M8
14	SWITCH	54	SPECIAL NUT	92	MUFFLER GASKET
15	FUEL FILLER CAP COMP	55	STARTER PULLEY COMP	93	DRAIN PLUG WASHER
16	OIL FILTER	56	COOLING FAN	94	DRAIN PLUG BOLT
17	FUEL TANK COMP	57	FLYWHEEL COMP	95	VALVE LIFTER
18	FUEL TANK JOINT	58	CRANKCASE ASSY	96	PUSH ROD
19	CLIP	59	OIL SEAL	97	BOLT
20	TUBE	60	DIODE COMP	98	BOLT
21	NUT M8	61	WIRE CLIP	99	HEAD COMP
22	FLANGE BOLTM8X25	62	DOWEL PIN8X14	100	SHROUD
23	OIL FILLER CAP	63	RADIAL BALL BEARING 6207/C3	101	BOLT
24	OIL FILLER CAP PACKING	64	CASE COVER PACKING	102	PUSH ROD GUIDE PLATE
25	FLANGE BOLTM8X40	65	OIL LEVEL SWITCH ASSY	103	PIVOT BOLT
26	OIL SEAL	66	RADIAL BALL BEARING6202/P6	104	VALVE ROCKET ARM
27	CRANKCASE COVER	67	CAMSHAFT COMP	105	ROCKER ARM PIVOT
28	AIR CLEANER PACKING	68	BALANCE GEAR	106	PIVOT ADJUSTING NUT
29	HEAD OVER PACKING	69	KEY	107	SPARK PLUG
30	HEAD COVER COMP	70	CRANKSHAFT COMP	108	CARBURETOR INSULATOR PACKING
31	HEAD COVER BOLT COMP	71	GOVERNOR SLIDER	109	CARBURETOR INSULATOR
32	TUBE	72	GOVERNOR SHAFT CLIP	110	CARBURETOR PACKING
33	EX PIPE GASKET	73	GOVERNOR SHAFT	111	CARBURETOR ASSY
34	EX PIPE	74	GOVERNOR WEIGHT PIN	112	AIR CLEANER PACKING
35	MUFFLER COMP	75	GOVERNOR WEIGHT	113	CYLINDER HEAD CASKET
36	TAPPING SCREEN M5X10	76	GOVERNOR WEIGHT HOLDER	114	DOWEL PIN
37	MUFFLER PROTECTOR	77	WASHER	115	IGNITION
38	NUT M6	78	CONNECTING ROD ASSEMBLY	116	BOLT M6X29
39	AIR CLEAN ELBOW COMP	79	PISTON PIN		
40	ELBOW PACKING	80	PISTON PIN CLIP		