

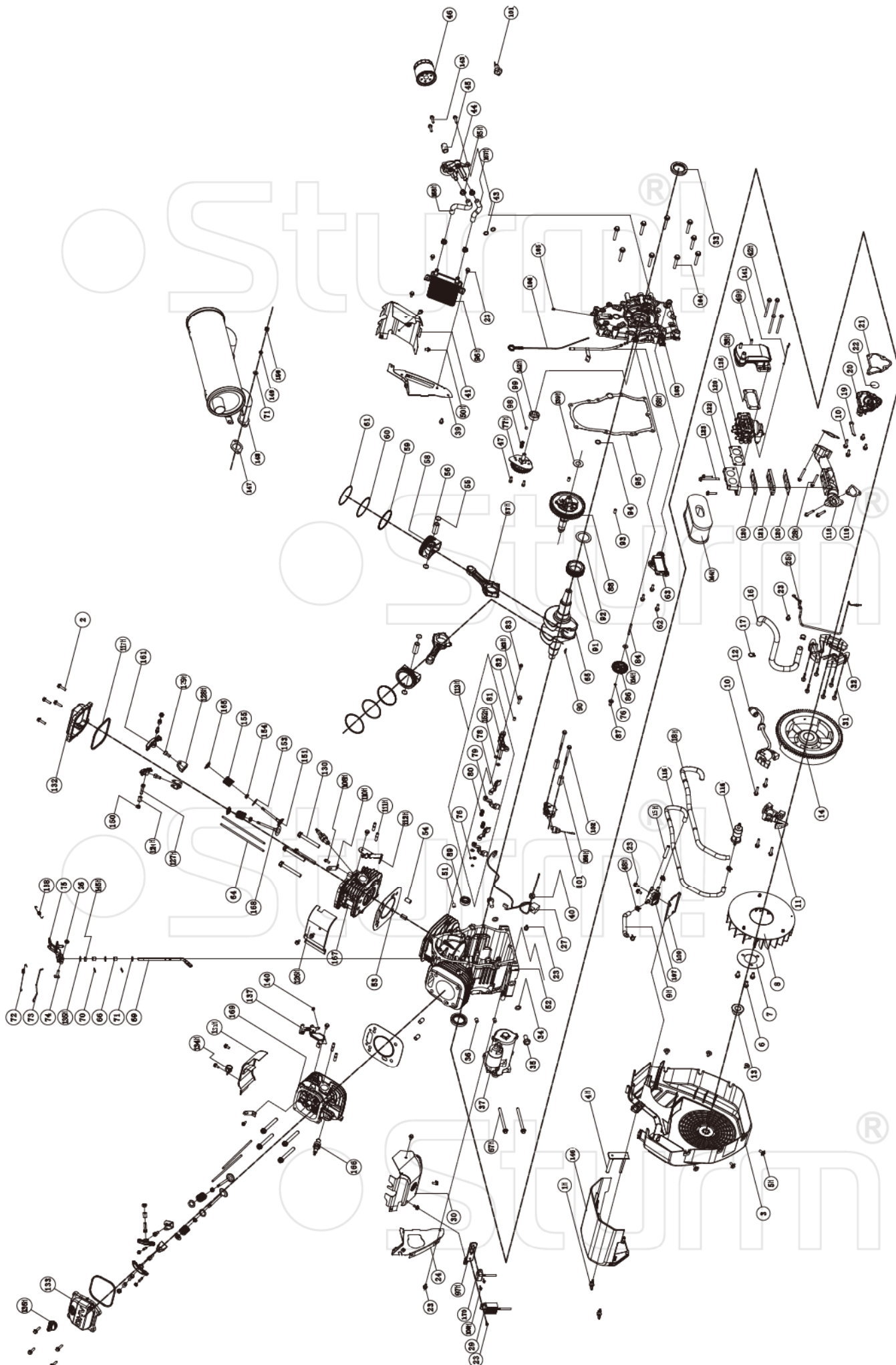
PG87952

NO.	DESCRIPTION	NO.	DESCRIPTION	NO.	DESCRIPTION
1	GENERATOR END COVER	33	BATTERY WIRE ⁺	67	BOLT M5×38
2	FLANGE BOLT M5×16	35	UNDERPROP	68	PANEL COVER
3	SPRING WASHER Φ6	36	BOLT M10×75	69	RCC
4	WASHER Φ6	37N	BRACKET	70	DIGITAL DISPLAY
5	BOLT M6×12	38	SHIELD	71	CHOKE CONTROLLOR
6	TERMINAL	39	WHEEL	72	CONTROL PANEL
7N	END COVER	40	BOLT M8×16	73	SWITCH
8	BOLT M6×8	41	WHEEL	74	RECEPTACLE
9	AVR	42	BOTTOM RUBBER	75	TERMINAL
11N	BRUSH ASSY	43	CUSHION PAD	76	TERMINAL
12	BOLT M10×160	44	SHIELD	77	BOLT M6×22
13	SPRING WASHER Φ10	45	CUSHION ANNULUS Φ20.5	78	NUT M6
14	NUT M10	46	INSULATION PAPER	79	WASHER Φ6
15	WASHER Φ10	47	HANDLE COVER	80	LOCK WASHER Φ6
16	UNDERPROP	48	UP COVER	81	FUSE
17N	STATOR ASSY	49	INSULATION PAPER	82-1	TERMINAL ⁺
18	STATOR COVER	50	SEPARATOR	82-2	TERMINAL ⁻
19	BOLT M10×280	51	BOLT M6×20	83	NUT M4
20	WASHER Φ10	53	WASHER (Ø24×Ø6.5×1.5)	85	BOLT M4×14
21N	ROTOR COMP	54	MOUNT VIBRATION, FUEL TANK	86	BOLT M3×6
22N	FRONT COVER	56	FUEL COCK	89	CIRCUIT BREAKERS
23	NUT M10	57	FUEL TUBE	90	DIODE ASSY
24	BOLT M10×27	58	CLIP	91	BOLT M5×14
25N	ENGINE	59	FUEL TANK CAP	92	BOLT M6×10
26	BATTERY FIXITY	60	FUEL FILTER	93	CUSHION ANNULUS Φ20.5
27	BATTERY(33AH)	61	BOLT M5×10	94	JACKET RUBBER
28	BOLT M8×45	62	FUEL METER	95	BOLT M5×12
29	BATTERY SUPPORT	63	FUEL TANK	96	NUT M5
30	NUT M6	64	RIPPLE PIPE	97N	SUPPORT,AVR
31	BATTERY WIRE ⁻	65	PLUG		
32	JACKET RUBBER	66	PLUG		

UK-ST20150119

尺寸请按A3大小印刷!

ENGINE FOR PG87952



NO.	DESCRIPTION	NO.	DESCRIPTION	NO.	DESCRIPTION
1N	FASTENER 1-4 TURN	56	PIN, PISTON	111N	STUD BOLT M8x35
2	FLANGE BOLT M6x25	57N	CONNECTING ROD	112N	GOVERNOR SPRING CONTROL BRACKET
3	FAN COVER, YELLOW	58	PISTON	113N	FOLLOWER
4N	ELEMENT STOPPER, AIR CLEANER, LONG	59	RING, OIL	114N	WASHER, Ø6.2xØ15x0.5, BLACK
5N	FLANGE BOLT M6x12	60	RING, SECOND PISTON	115	FUEL HOSE, Ø90
6	FLANGE BOLT M8x16	61	RING, FIRST PISTON	116	FUEL FILTER
7	PAWL GUIDE, FAN	62	FLANGE BOLT M6x20	117N	O-RING
8	COOLING FAN	63	FILTER COMPANION, OIL	118	INTAKE MANIFOLD
9N	FUEL HOSE, FUEL PUMP TO CARBURETOR	64	PUSH ROD	119	GASKET INTAKE MANIFOLD
10	FLANGE BOLT M6x29	65	CRANKSHAFT	120	GASKET, CARBURETOR
11	IGNITION COIL, LEFT SIDE	66	ROLLER BEARING HK0810	121	INSULATOR, CARBURETOR
12	IGNITION COIL, RIGHT SIDE	67N	FLANGE BOLT M8x110	122	CONNECTING BASE, CARBURETOR
13	FLANGE LOCK NUT M20x1.5	68N	THIMBLE ASSEMBLY, OIL DIPSTICK	123	FLANGE BOLT M6x65
14	FLYWHEEL	69	SHAFT, GOVERNOR ARM	124N	SLEEVE-ROCKER PIVOT
15N	PULSE LINE TUBE	70	PIN, SHAFT	125	CARBURETOR
16	BREATHER TUBE	71	WASHER Ø8	126N	AIR GUIDE, INNER, CYLINDER-2
17	CLIP, Ø17xØ1.5	72	SPRING, THROTTLE RETURN	127N	FLANGE BOLT M8x28
18N	PROTECTIVE JACKET, FUEL HOSE	73	ROD, GOVERNOR	128N	SUPPORT, ROCKER ARM SHAFT
19	PLATE, COIL	74	BOLT, GOVERNOR ARM, M6x30	129N	HEXAGON BOLT M8x16
20	COVER, BREATHER	75	ARM, GOVERNOR	130	FLANGE BOLT M10x80
21	GASKET, BREATHER COVER	76	CLIP, GOVERNOR GEAR	131N	AIR GUIDE, INNER, CYLINDER-1
22	UNILATERAL VALVE	77N	GEAR COMPINATION, OIL PUMP	132	CYLINDER HEAD COVER, RIGHT SIDE
23	FLANGE BOLT M6x12	78	ROCKER ARM, INTAKE VALVE 2	133	CYLINDER HEAD COVER, LEFT SIDE
24	AIR DEFLECTOR, LEFT SIDE	79	ROCKER ARM, INTAKE VALVE 1	134N	CLIP, Ø17
25N	SOLENOID JUMPER WIRE HARNESS	80	SPRING, SUPPORT	135N	WASHER, Ø8.2xØ17x0.8, BLACK
26	FLANGE LOCK NUT M6	81	BRACKET, ROCKER ARM	136N	CAP OIL FILL
27	SINGLE-STAGE SWITCH, FLAMEOUT	82	DOWEL PIN, Ø8x10	137	CHOKE CONTROL ASSY-BOWDEN WIRE
28N	FLANGE BOLT M6x40	83	FLANGE BOLT M5x16	138	SPRING, GOVERNOR
29	MANOSTAT	84	SHAFT, GOVERNOR GEAR	139N	WASHER, Ø35xØ17.2x1, BLACK
30	AIR GUIDE, LEFT SIDE	85N	CLIP, Ø16.2	140	BRACKET, GOVERNOR
31	FLANGE BOLT M6x33	86	GEAR, GOVERNOR	141	LINK ROD CHOKE
32	COIL ASSY, CHARGER	87	BUSHING, GOVERNOR GEAR	142N	ROTOR, OIL PUMP, OUTER
33	OIL SEAL, Ø38xØ58x9	88	CAMSHAFT	143N	FLANGE BOLT M6x25
34	WASHER, Ø12.5xØ20x2, BLACK	89	SINGLE-SEALED BEARING, Ø17xØ35x10	144N	ELEMENT, AIR CLEANER, SHORT
35	DRAIN BOLT, M12x1.5x15	90	WOODRUFF KEY, 4x5.5x7.5	145N	OIL SEAL, Ø7xØ14x5
36	DOWEL PIN, Ø10x14	91	GEAR, DRIVE	146	COVER, AIR CLEANER
37	STARTER MOTOR ASSEMBLY	92	WASHER, Ø39xØ54x1.2, BLACK	147	GSKT., EXT.
38N	GASKET, AIR CLEANER	93	DOWEL PIN, Ø8x14	148	MUFF., ASSY.
39	AIR DEFLECTOR, RIGHT SIDE	94	SEAL, Ø14xØ2.65	149	SPRING WASHER Ø8
40	BUFFERING RING, Ø9.5x10	95	GASKET, CRANKCASE COVER	150	HEX NUT M8
41	AIR GUIDE, RIGHT SIDE	96N	OIL COOLER	151	VALVE, EXHAUST
42N	FLANGE BOLT M6x83	97N	BRACKET, DLODE COMP.	152N	WASHER, Ø6.4xØ13x1, BLACK
43	SEAL, Ø12xØ2.5	98	SPRING, COMPRESS	153	RETAINER, VALVE SPRING
44	BASE, OIL FILTER	99	STEEL BALL 9.5	154	OIL SEAL, VALVE
45	NUT, CONNECT	100N	FLANGE BOLT M5x12	155	SPRING, VALVE
46	STRAINER, OIL	101	LOW OIL PRESSURE SHUT DOWN SWITCH	156N	BUSH Ø7
47	HEXAGON BOLT M6x16	102	FLANGE BOLT M6x75	157N	HOSE, OIL LINE1
48N	CLIP, Ø12xØ8	103	COVER, CRANKCASE	158N	HOSE, OIL LINE2
49N	CONNECTING BASE, AIR CLEANER	104	FLANGE BOLT M8x50	161	ROCKER ARM
50N	FLANGE BOLT M6x10	105	PLUG, CRANKCASE COVER	165	RETAINER, INTAKE VALVE SPRING
51	PLUG, NPT HEXAGON SOCKET	106	OIL DIPSTICK ASSEMBLY, YELLOW	166	SPARK PLUG, F6RTC
52	CRANKCASE	107	FUEL PUMP	167	CYLINDER HEAD, RIGHT SIDE
53	GASKET, CYLINDER HEAD	108N	FLANGE BOLT M8x20	168	VALVE, INTAKE
54	DOWEL PIN, Ø12x20	109	FUEL PUMP BRACKET	169	CYLINDER HEAD, LEFT SIDE
55	CIRCLIP, Ø17xØ1	110N	SUPPORT	170	DLODE COMP.