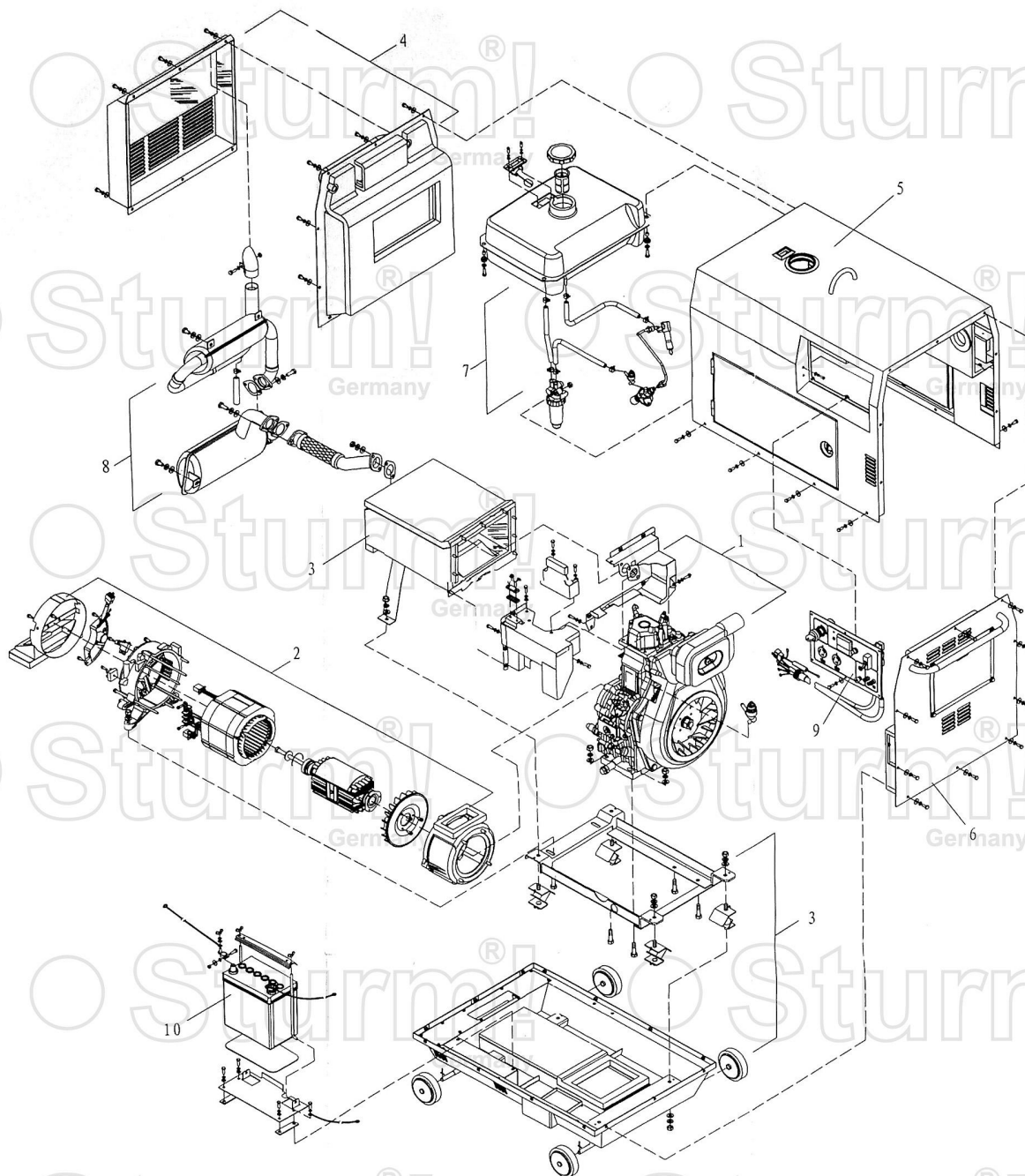


PG8D42E

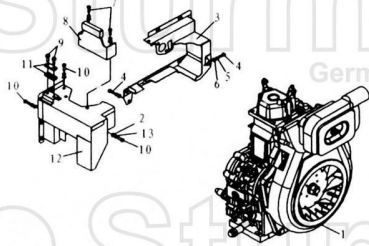


No.	Description
1	diesel engine assembly
2	electric machine assembly
3	chassis
4	left side plate
5	housing unit
6	right side plate
7	fuel system
8	muffler assembly
9	control panel
10	accumulator

PG8D42E

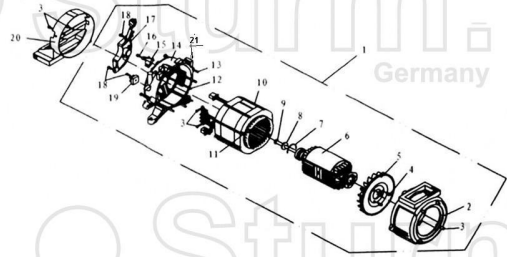
Рисунок 2

PG8D42E-2



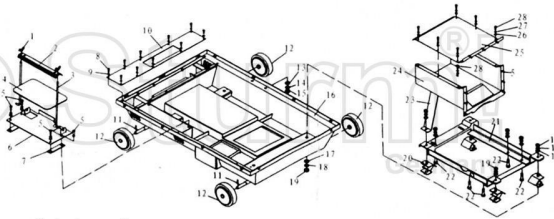
(1) diesel engine assembly

No.	description	quantity	No.	description	quantity
1	air cooled diesel	1	8	buffer support assy	1
2	gasket 6	2	9	bolt M6*30	2
3	front air cover weldment	1	10	hexagonal bolt M6*30	2
4	hexagonal bolt M8*16	2	11	fuel pipe pressure plate assy	1
5	elastic gasket 8	2	12	rear air cover weldment	1
6	gasket 8	2	13	elastic gasket 8	2
7	hexagonal bolt M8*20	2			



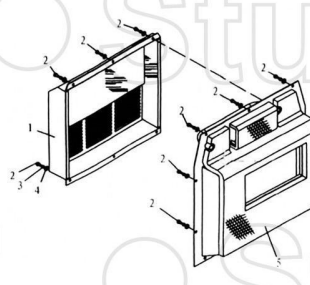
(2) electric machine assembly

No.	description	quantity	No.	description	quantity
1	electric motor	1	11	round nut M5	2
2	front cover of electric motor	1	12	bolt M5 (locking stator)	2
3	hexagonal bolt M8*30	4	13	Bolt M6 (locking front cover)	4
4	screw M5*12	7	14	rear cover of electric motor	1
5	fan	1	15	carbon brush	1
6	rotor	1	16	screw M5*14	2
7	clip	1	17	excitation AVR	1
8	gasket	1	18	screw M5*16	3
9	bolt (locking rotor)	1	19	rectifier	1
10	stator	1	20	air cover of electric motor weldment	1
			21	capacitor	1



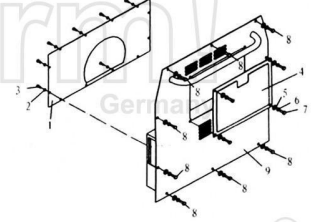
(3) chassis assembly

No.	description	quantity	No.	description	quantity
1	butterfly nut M6	2	15	nut M8	5
2	accumulator pressure plate	1	16	chassis weldment	1
3	accumulator mount rod	2	17	gasket 10	14
4	accumulator washer	1	18	elastic gasket 10	14
5	hexagonal bolt M6*12	13	19	nut M10	14
6	accumulator supporter	1	20	cushion assy	4
7	accumulator supporter washer	2	21	housing base weldment	1
8	screw M5*12	10	22	hexagonal bolt M10*40	6
9	elastic gasket 5	10	23	supporter of heat insulation weldment	1
10	exhaust head of electric motor	1	24	lower body of heat insulation weldment	1
11	cotter pin	4	25	heat insulation cover	1
12	fool wheel	4	26	gasket 6	8
13	gasket 8	17	27	gasket 6	8
14	elastic gasket 8	17	28	bolt M6*20	8



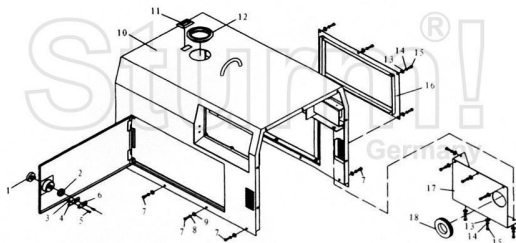
(4) left side plate

No.	description	quantity
1	radiator unit	1
2	hexagonal bolt M6*16	16
3	elastic gasket 6	16
4	big gasket 6	16
5	left side plate weldment	1



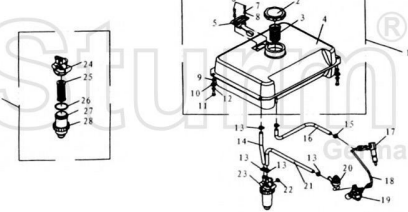
(6) right side plate

No.	description	quantity
1	tank cover	1
2	elastic gasket 5	10
3	screw M5*12	10
4	Air cleaner cover	1
5	big gasket 6	4
6	elastic gasket 6	4
7	bolt M6*16	4
8	hexagonal bolt M6*16	10
9	right side plate weldment	1



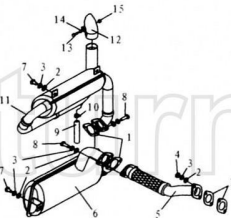
(5) housing unit

No.	description	quantity	No.	description	quantity
1	lock knob	1	10	housing weldment	1
2	washer	1	11	window mount sheath	1
3	nut M5	1	12	fuel tank vent cushion	1
4	lock	1	13	big gasket 6	13
5	screw M5*12	2	14	elastic Gasket 6	13
6	lock reinforced plate	1	15	bolt M6*16	13
7	hexagonal bolt M6*16	8	16	rear plate weldment	1
8	elastic Gasket 6	8	17	filter seal	1
9	Big gasket 6	8	18	air cleaner cushion	1



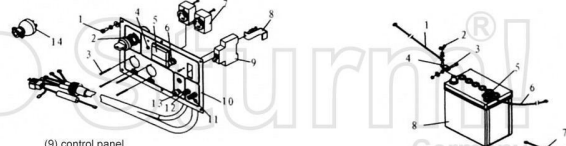
(7) fuel system

No.	description	quantity	No.	description	quantity
1	fuel tank	1	15	clip 2	2
2	fuel tank cover assy	1	16	oil return pipe	1
3	filter filter	1	17	nozzle	1
4	fuel tank weldment	1	18	high pressure fuel pipe	1
5	oil indicator assy	1	19	oil pump unit	1
6	screw M5*12	2	20	fuel control valve	1
7	elastic gasket 5	2	21	fuel pipe 2	1
8	gasket 5	2	22	nut M8	1
9	sheath	4	23	diesel air cleaner unit	1
10	cushion	4	24	diesel air cleaner seat	1
11	bolt M6*16	4	25	filter core	1
12	gasket 6	4	26	seal sheath	1
13	clip 1	4	27	filter cup	1
14	fuel pipe 1	1	28	fasten cap	1



(8) muffler assembly

No.	description	quantity	No.	description	quantity
1	exhaust pipe washer	4	9	end gas outlet hose	1
2	gasket 8	9	10	clip 1	1
3	elastic gasket 8	9	11	second-lever muffler assy	1
4	nut M8	2	12	end gas turn outlet weldment	1
5	exhaust pipe assy	1	13	bolt M6*30	1
6	one-lever muffler assy	1	14	gasket 6	1
7	bolt M8*16	3	15	nut M6	1
8	bolt M8*30	4			



(9) control panel

No.	description	quantity
1	screw M6*12	6
2	electric lock	1
3	screw M3*30	4
4	oil pressure indicator light	2
5	AC voltmeter	1
6	fuse	1
7	receptacle	2
8	air switch mount	1
9	air switch	1
10	control panel	1
11	12V cathode wiring terminal	1
12	12V positive wiring terminal	1
13	control panel earth terminal	1
14	plug	1

(10) accumulator

No.	description	quantity
1	accumulator positive wiring	1
2	butterfly nut M6	2
3	bolt M6*25	2
4	accumulator positive wiring clip	1
5	accumulator cathode wiring clip	1
6	accumulator wiring terminal	1
7	generator wiring earth terminal	1
8	accumulator	1