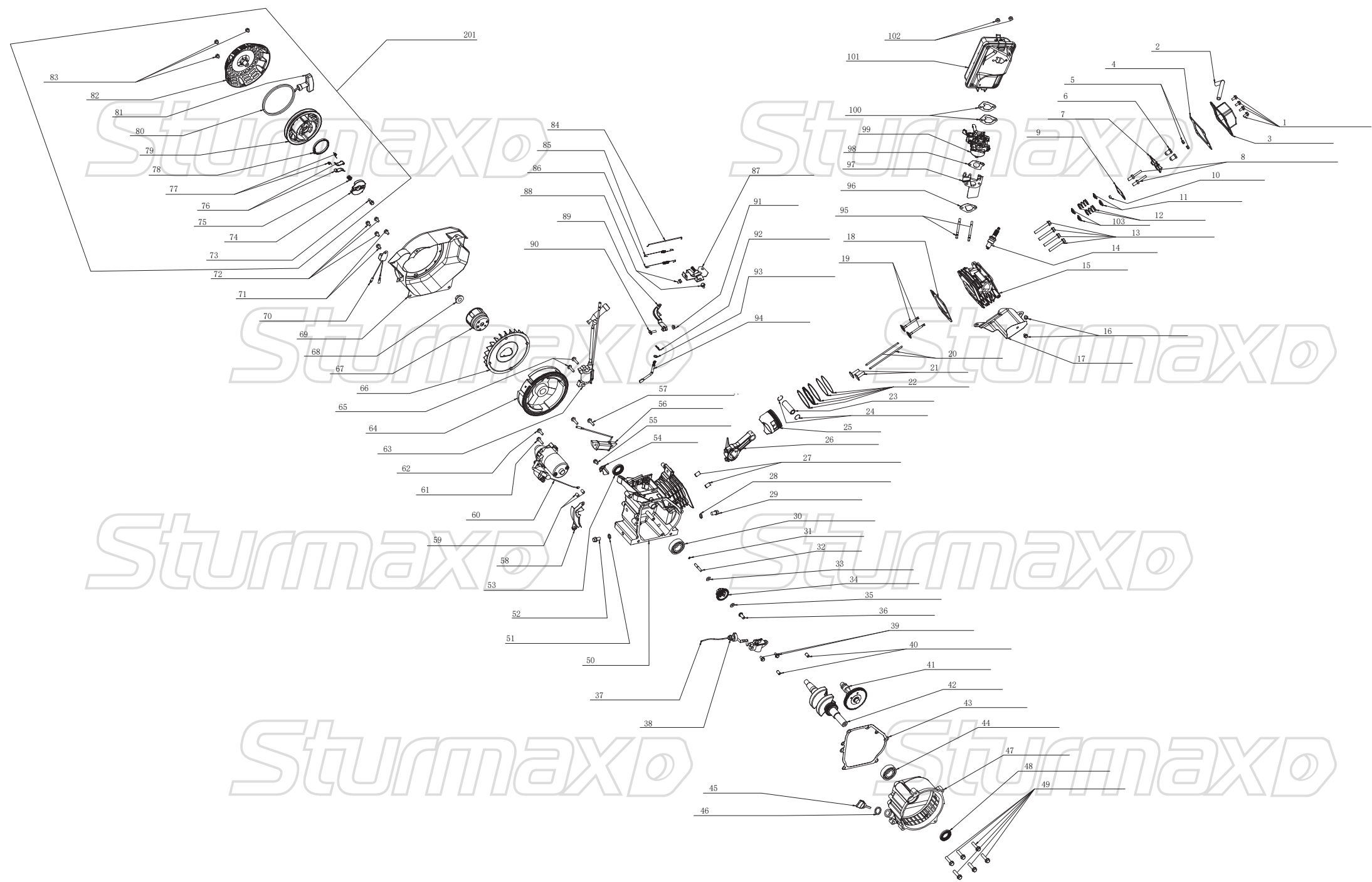


PGM8730ENW

NO.	DESCRIPTION	NO.	DESCRIPTION
1	FUEL TANK COVER	47	LOW OIL ALERT LIGHT
2	FUEL TANK SEAL	49N	VOLTMETER
3	FILTER SCREEN	50	BREAKER
4	FUEL GAUGE (INDICATOR)	52	DC PROTECTOR
5	HEX. FLANGE BOLT	53N	TERMINAL
6	FLAT WASHER	54	EURO STYLE SOCKET
7	BUSH	55	NUT
8	FUEL TANK CUSHION	56	SPRING WASHER
9	FUEL TANK	57	FLAT WAHSER
10	FUEL TANK SWITCH FILTER SCREEN	58	HEX. FLANGE BOLT
11	FUEL TANK SWITCH SEAL	59N	PANEL
12	NUT	60	BOLT
13	FUEL TANK SWITCH ASSEMBLY	62	PANEL REAR COVER
14	FUEL PIPE CLAMP	63	CORD SHEATH
15	FUEL PIPE	64	NUT
16	FLAME	65	SMALL CUSHION PAD
17	ENGINE	66	FLAT WAHSER
18	AIR FILTER BRACKET	67	SPRING WASHER
19	HEX. FLANGE BOLT	68	BIG CUSHION PAD
20	MUFFLER SEAL	69	FLAME STAND
21	MUFFLER ASSEMBLY	70	FLAT WAHSER
22	SPRING WASHER	71	NUT
23	HEX. FLANGE BOLT	73	ELECTRIC STARTING SWITCH KEY
24	HEX. FLANGE BOLT	74	HOOK BOLT
25	MUFFLER GUARD	75	BATTERY PRESS PLATE
26	HEX. FLANGE BOLT	76	CONNECTION WIRE OF BATTERY
27	MUFFLER SUPPORT BRACKET	77	BATTERY
28A	ROTOR	78	BATTERY BOX
29A	STATOR WINDING	79	NUT
30	MOTOR REAR COVER	80N	GUARD BOARD
31	RECTIFIER	81N	GUARD BOARD
32	HEX. FLANGE BOLT	82	SOLID WHEEL
33	CARBON BRUSH ASSEMBLY	83	SHORT AXIS OF WHEEL
34	CONNECTION BLOCK	84	FLAT WASHER
35	HEX. FLANGE BOLT	85	FLAT WASHER
36	AVR	86	NUT
37	HEX. FLANGE BOLT	87	HEX. FLANGE BOLT
38	FLAT WAHSER	88	FLAT WASHER
39	HEX. FLANGE BOLT	89	NUT
40	BACK COVER	90	HANDLE
41	HEX. FLANGE BOLT	91	FLAT WASHER
42	HEX. FLANGE BOLT	92	SPRING WASHER
43	COLLAPSIBLE BEAM	93	HEX. FLANGE BOLT
44	PANEL	94	FLAME BRACKET
45	ELECTRIC STARTING SWITCH	95	NUT
46	POWER INDICATOR	96	RUBBER FOOT PAD



ENGINE FOR PGM8730ENW

NO.	DESCRIPTION	NO.	DESCRIPTION
1	HEX. FLANGE BOLT	53	OIL SEAL
2	RIGHT-ANGLE WASTE PIPE	54	PRESSURE BOARD
3	CYLINDER HEAD COMP	55	HEX. FLANGE BOLT
4	CYLINDER HEAD SEAL	56	CHARGE COIL ASSY
5	VALVE CLEARANCE ADJUSTING NUT	57	HEX. FLANGE BOLT
6	VALVE ARM NUT	58	FLY WHEEL GUARD
7	VALVE ARM	59	MOTOR ASSY POSITION PIN
8	BOLT	60	MOTOR ASSY
9	LEVER BRACKET	61	HEX. FLANGE BOLT
10	VALVE HEAD CAP	62	HEX. FLANGE BOLT
11	VALVE SPRING BASE	63	IGNITION COIL ASSY
12	VALVE SPRING	64	FLY WHEEL WITH GEAR
13	BOLT	65	HEX. FLANGE BOLT
14	SPARK PLUG	66	FAN
15	CYLINDER HEAD	67	START COVER
16	HEX. FLANGE BOLT	68	NUT
17	DOWN WINDING GUARD	69	FAN COVER
18	CYLINDER HEAD SEAL GASKET	70	ONE-WAY CONDUCTOR ASSY
19	INTAKE AND EXHAUST VALVE	71	HEX. FLANGE BOLT
20	LEVER ASSEMBLY	72	HEX. FLANGE BOLT
21	LITER	73	PRESSURE BOARD SCREW
22	PISTON RING ASSY	74	PRESSURE BOARD
23	PISTON PIN	75	PRESSURE BOARD SPRING
24	PISTON PIN CIRCLIP	76	RATCHET
25	PISTON	77	RATCHET SPRING
26	CONNECTION ROD ASSY	78	SPRING
27	VALVE HEAD POSITION PIN	79	RECOIL STARTER REEL
28	OIL DRAIN BOLT WASHER	80	PULLING CORD
29	OIL DRAIN BOLT	81	HANDLE
30	DEEP GROOVE BALLING BEARING 6205	82	REEL COVER
31	CIRCLIP FOR SPEED ADJUSTING SHAFT	83	HEX. FLANGE BOLT
32	SPEED ADJUSTING SHAFT	84	GOVERNOR ROD
33	WASHER	85	TRIMMING SPEED SPRING
34	SPEED GEAR ASSY	86	RESET SPRING
35	WASHER	87	GOVERNOR BASE ASSY
36	SPEED ADJUSTING SHAFT BUSH	88	HEX. FLANGE BOLT
37	OIL SENSOR ASSY	89	GOVERNOR ARM
38	NUT	90	T-SHAPED BOLT
39	HEX. FLANGE BOLT	91	NUT
40	CRANKCASE POSITION PIN	92	GOVERNOR ROD PIN CLAMP
41	CAMSHAFT ASSY	93	WASHER
42	CRANK ASSY	94	GOVERNOR ROD CLAMP
43	CRANKCASE PAPER WASHER	95	STUD BOLT
44	DEEP GROOVE BALLING BEARING 6205	96	INTAKE WASHER
45	OIL LEVEL CAP ASSEMBLY	97	CARBURETOR HEAT INSULATOR
46	OIL LEVEL SEAL	98	(OUT)CARBURETOR WASHER
47	CRANKCASE HIGH COVER	99	CARBURETOR ASSEMBLY
48	OIL SEAL	100	(IN)CARBURETOR WASHER
49	HEX. FLANGE BOLT	101	AIR FILTER ASSEMBLY
50	CRANKCASE	102	NUT
51	OIL DRAIN BOLT WASHER	103	VALVE OIL SEAL
52	OIL DRAIN BOLT	201	RECOIL STARTER