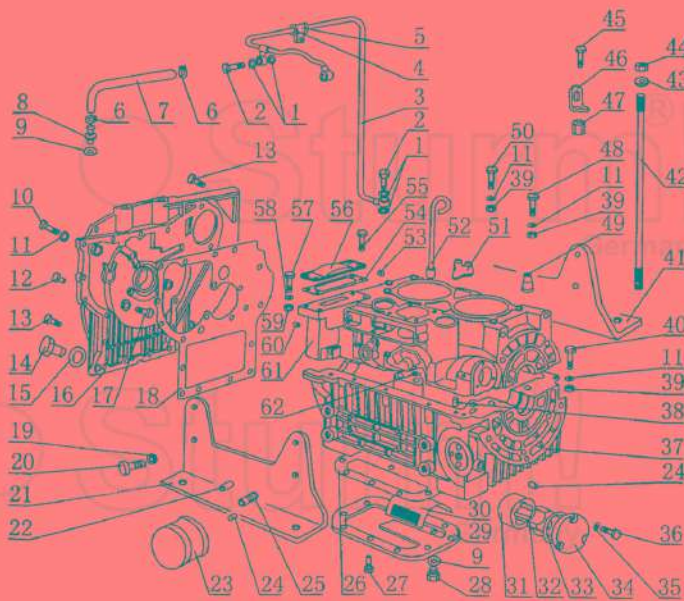


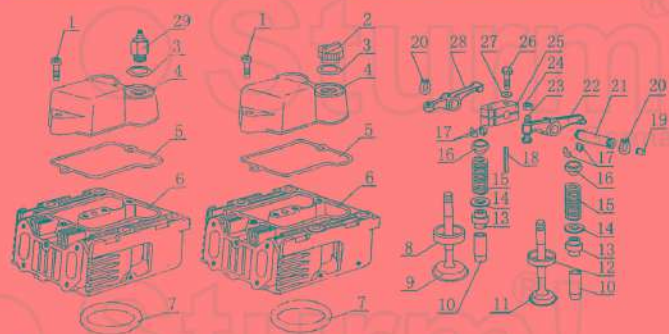
Engine for PG8D8E3



1 Case assembly

No	Part	Qty
1	Gasket	7
2	Fastening bolt of oil pipe (short)	2
3	Oil pipe	1
4	Clip	1
5	Rubber tape of clip	1
6	φ 18	3
7	φ 11	1
8	Joint of breather pipe	1
9	Copper shim	1
10	M6X25	2
11	Washer 5	2
12	M6X12	6
13	M6X20	4
14	Drain plug of side cover	1
15	Copper shim	2
16	Side cover	1
17	M6X25 bolt	6
18	Gasket of side cover	1
19	Washer 10	8
20	M10X25 bolt	8
21	Bottom frame	1
22	Assembly of pressure-limit valve	1
23	Oil filter	1
24	Large bulkhead	4
25	Stud of oil filter	1
26	Gasket of bottom cap	1
27	M6X20 bolt	10
28	M12X1.25 drain plug of bottom cap	1
29	Bottom cap	1
30	Preliminary screen	1
31	Outer rotor of oil pump	1

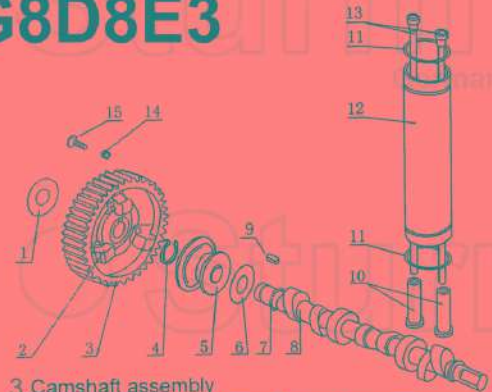
No	Part	Qty
32	Inner rotor of oil pump	1
33	40X1.8 O ring	1
34	Cap of oil pump	1
35	5 washer	4
36	M5X16 bolt	4
37	Lower case	1
38	8X16 pin	2
39	M6 nut	25
40	M6X15 bolt	23
41	Bottom frame	1
42	Bolt of cylinder cap	8
43	Nut shim of cylinder cap	9
44	Nut of cylinder cap (short)	5
45	M10X25 bolt	8
46	Hook	2
47	Nut of cylinder cap (long)	2
48	M6X20 bolt	4
49	Bolt jacket of cylinder cover (small)	4
50	M6X12 bolt	2
51	Bolt jacket of cylinder cover (large)	4
52	Oil gauge	1
53	Small bulkhead	1
54	Gasket of gear cover	1
55	M8X18 bolt	7
56	Gear cover	1
57	M8*45 bolt	2
58	8 washer	2
59	M8 nut	2
60	8X16 pin	1
61	Upper case	1
62	13.2*2.4 O ring	8



2 Cylinder cap assembly

No	Part	Qty
1	M8X25 screw	2
2	Oiling plug	1
3	Gasket of oiling plug	2
4	Housing of cylinder cap	2
5	Gasket of cylinder cap	2
6	Cylinder cap	2
7	Gasket of cylinder cap	Assembled
8	Seat of air inlet	2
9	Air inlet	2
10	Valve guide	2
11	Exhaust	2
12	Exhaust seat	2
13	Oil seal of valve guide	2
14	Bottom seat of valve guide spring	4
15	Valve guide spring	4

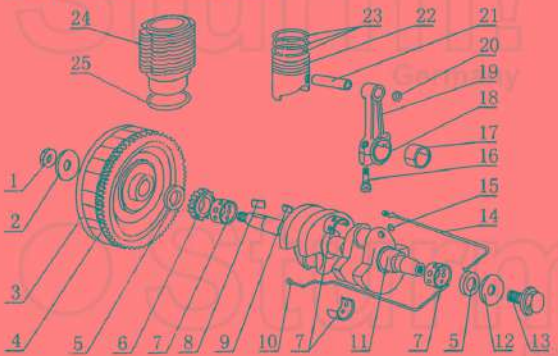
No	Part	Qty
16	Upper seat of valve guide spring	4
17	Lock plug of valve guide	4
18	Oil pipe	2
19	Plug	2
20	17 baffle	4
21	Rocker shaft	2
22	Rocker-arm of exhaust	2
23	Regulating screw	4
24	Regulating nut	4
25	Seat of rocker shaft	2
26	M8X30 bolt	4
27	8 washer	4
28	Rocker-arm of air inlet	2
29	Temperature sensor	1



3 Camshaft assembly

No	Part	Qty
1	Thrust piece	1
2	Flyball	1set
3	Timing gear	1
4	φ 17 baffle	1
5	Pusher tray	1
6	Wearing plate	1
7	Circlep	1
8	Camshaft	1

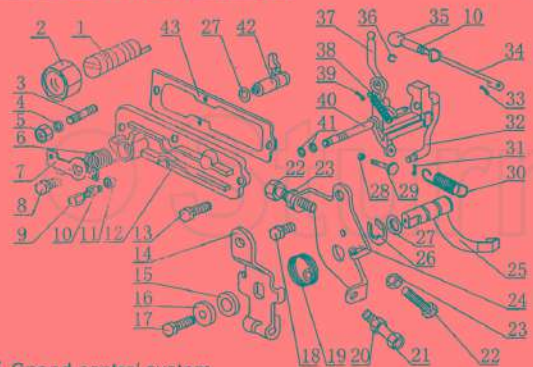
No	Part	Qty
9	4X2 5X14-key	1
10	Tappet	4
11	37 5X3.2 O ring	4
12	Jacket of push rod	2
13	Assembly of push rod	4
14	M5 nut	3
15	M5X16 screw	3



4 Assembly of crankshaft piston rod

No	Part	Qty
1	Flywheel nut	1
2	Gasket of flywheel nut	1
3	Flywheel	1
4	Teeth ring	1
5	Crankshaft oil seal	2
6	Timing gear	1
7	Main bushing	3set
8	6X16 A key	1
9	6X8X16 semicircular key	1
10	Seal strip (left)	1
11	Crankshaft	1
12	12 gasket of output shaft	1
13	Fastening bolt of output shaft	1

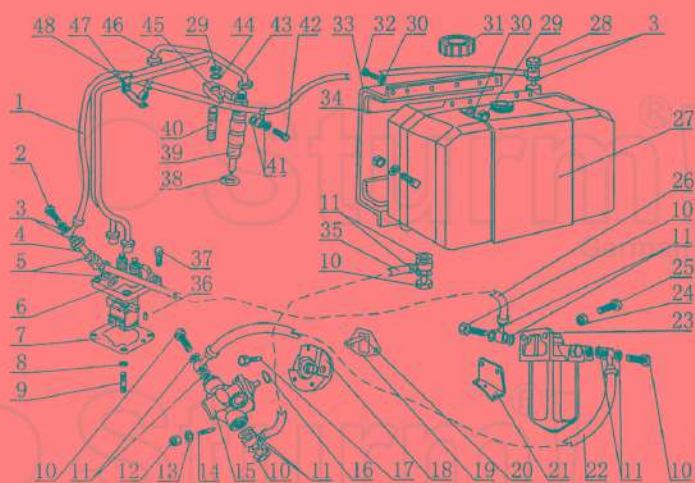
No	Part	Qty
14	Seal strip (right)	1
15	6 steel ball	4
16	Bolt of connecting rod	4
17	Connecting rod bushing	2set
18	Cap of connecting rod	2
19	Body of connecting rod	2
20	Circlep	4
21	Piston pin	2
22	Piston	2
23	Piston ring	6set
24	Cylinder housing	2
25	Gasket of cylinder housing	4



5 Speed control system

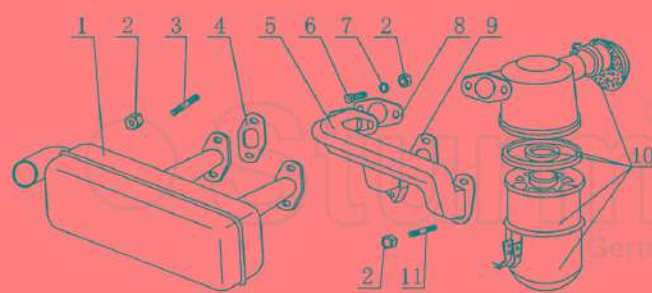
No	Part	Qty
1	Spacing stud	1
2	Nut	1
3	Rack cover stud	1
4	6 gasket	1
5	M6 nut	1
6	Reed	1
7	Stop rocker-arm	1
8	M6X14 bolt	1
9	Joint of flexible rope	1
10	2.5 split pin	1
11	M4X10 screw	1
12	Rack cover	1
13	M6X22 bolt	1
14	Steering rocker-arm	1
15	Bowl-type reed	1
16	Gasket	1
17	M8X14 bolt	1
18	M8X12 bolt	1
19	Steering reed	1
20	M8 nut	1
21	Bolt of dragline	1
22	M6X35 bolt	2

No	Part	Qty
23	M6 nut	2
24	Positioning seat	1
25	Steering shaft assembly	1
26	8 split washer	1
27	5X1.8 O ring	2
28	M4 nut	1
29	Spacing screw	1
30	Governor spring	1
31	Elastic pin	1
32	Fork	1
33	2X10 pin	1
34	Drawbar	1
35	Ball nut	1
36	Circlep	1
37	Governor lever	1
38	Stabilization spring	1
39	1X8 pin	1
40	Lever shaft	1
41	12.8X1.8 O ring	2
42	Stop shaft assembly	1
43	Gasket of rack cover	1



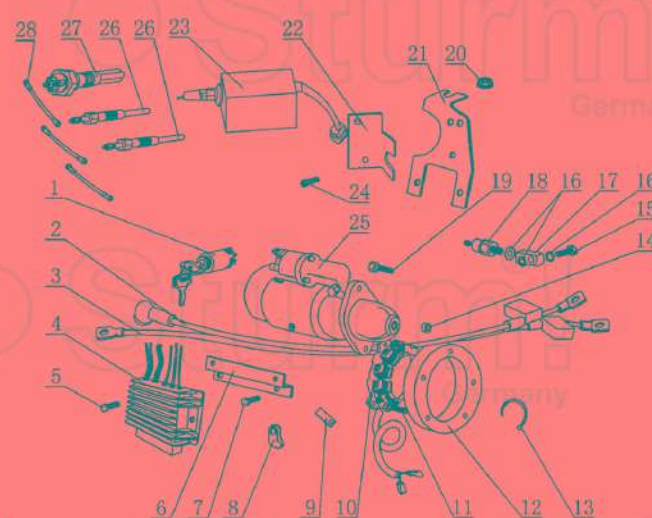
1 Fuel system

No	Part	Qty	No	Part	Qty
1	Return pipe assembly	1	25	M6X20 bolt	2
2	Bolt of return pipe	1	26	Oil delivery pipe (II)	1
3	Gasket of return pipe	2	27	Fuel tank	1
4	M12X15 bolt of oil delivery pipe	1	28	M6 drain bolt of fuel tank	1
5	φ 12 copper thread shim	2	29	M8 nut	2
6	Diesel pump	1	30	8 washer	4
7	Gasket	As required	31	Fuel tank cover	1
8	8-washer	1	32	M8X18 bolt	2
9	Injection pump stud	2	33	Fuel tank support	1
16	M14X1.5 drain bolt of oil delivery pump	5	34	Cushion	2
11	14 compound gasket	10	35	Oil delivery pump(I)	1
12	M6 nut	1	36	4X6 pin	1
13	8 washer	1	37	M8X25 bolt	3
14	Oil delivery pump stud	1	38	Injector gasket	As required
15	Oil delivery pump assembly	1	39	Injector	2
16	13 2X2.65 O ring	1	40	Injector stud	2
17	M6X20 screw	2	41	Gasket of return pipe	4
18	Seat of oil delivery pump	1	42	Bolt of return pipe	2
19	Seat gasket of oil delivery pump	1	43	High-pressure oil pipe assembly(I)	1
20	Top pin	1	44	Washer of clamping plate	2
21	Connecting plate of diesel filter	1	45	Clamping plate of injector	1
22	Oil delivery pipe	1	46	High-pressure oil pipe assembly	1
23	Diesel filter	1	47	Connecting plate	1
24	M8 nut	2	48	Fixture block	1



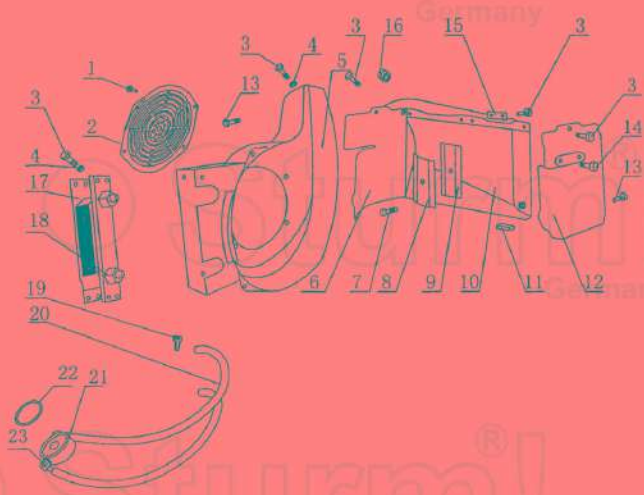
3 Air-inlet/outlet system

No	Part	Qty
1	Muffer	1
2	M8 nut	1
3	Muffer stud	4
4	Gasket of air-outlet pipe	2
5	Air-inlet pipe	1
6	M6X30 bolt	2
7	8 washer	2
8	Air filter gasket	1
9	Gasket of air-inlet pipe	2
10	Air filter assembly	1
11	Stud of air-inlet pipe	2



4 Electric system

No	Part	Qty	No	Part	Qty
1	Switch lock	1	15	Oil pipe bolt (long)	1
2	Line of storage battery (+)	1	16	φ 8 gasket	7
3	Line of storage battery (-)	1	17	Sensor seat	1
4	Voltage regulator	1	18	Pressure sensor	1
5	M6X16 screw	2	19	M10X30 screw	2
6	Bracket of voltage regulator	1	20	M8 nut	1
7	M8X16 bolt	2	21	Support of electromagnet	1
8	Wiring clip of voltage regulator	1	22	Fixture of electricity flameout	1
9	Wiring clip of generator	1	23	Electricity flameout	1
10	Inner rotor of flywheel generator	1	24	M6X14 bolt	2
11	M6X20 screw	3	25	Start motor	1
12	Outer rotor of flywheel generator	1	26	Pre-heater plug	2
13	Strip	1	27	Pre-heater plug (I)	1
14	Rubber ring	1	28	Preheating line	3



2 Cooling system

No	Part	Qty	No	Part	Qty
1	M6X8 bolt	4	13	M6X8 bolt	1
2	Air-inlet cover	1	14	M6X14 bolt	1
3	M6X14 bolt	5	15	Clamping plate	1
4	M8 nut	5	16	M8 safety nut	1
5	Air duct	1	17	Oil cooler	1
6	Front air baffle	1	18	T-joint	2
7	M5X16 bolt	1	19	φ 19-φ 23 collar	4
8	Left air baffle	1	20	φ 11 rubber hose	2
9	Assembly of left air baffle	1	21	Seat of oil filter	1
10	Draught plate	1	22	φ 6X2.65 O ring	1
11	Filler rod of draught plate	1	23	Straight elbow	1
12	Rear air baffle	1			