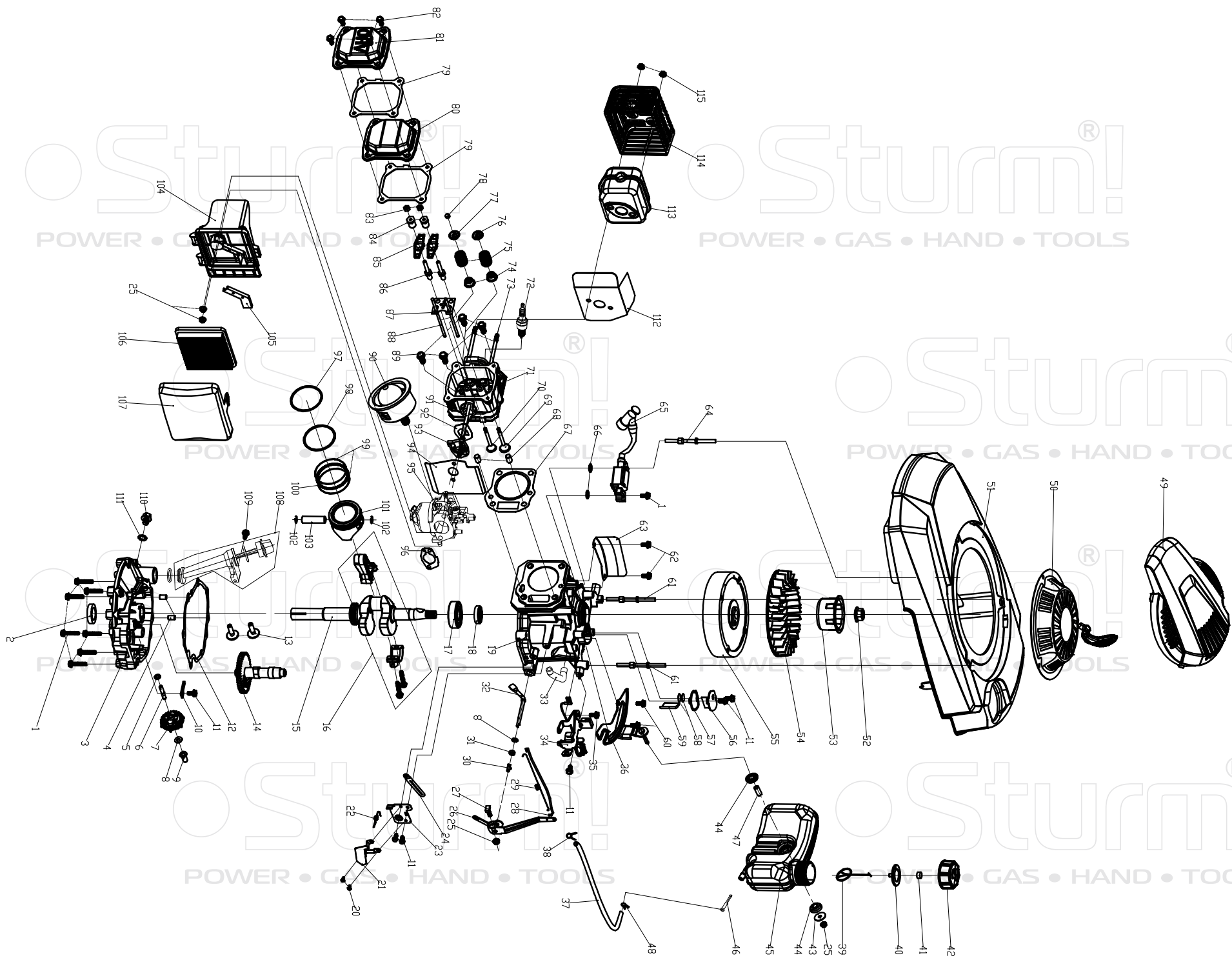


# PL4614S

NO.	DESCRIPTION	NO.	DESCRIPTION	NO.	DESCRIPTION
1	Inch hex flange bolts	31	Side discharge cover bracket	61	Catcher bottom
2	blade washer	32	Self tapping screw	62	Lock washer
3	2pcs Swing blade	33	Self-lock device base	63	Rear discharge cover shaft
4	Blade Adapter Assy	34	Self-lock device spring	64	Rear discharge cover spring
5	Hexagon head bolts	35	Self-lock device limit	65	Rear discharge cover dust proof
6	Hex flange bolts	36	Self-lock device base washer	66	Rear discharge cover
7	Belt cover	37	Cross recessed pan head tapping screw	67	Catcher Top
8	Phillips flat head self tapping screw	38	Outter cover of hub	68	Catcher Screen
9	Bolt	39	Wheel assy	69	Foam pipe
10	Self-locking nut	40	Inner cover of hub	70	Self-propelled Lever
11	deck welding assy.	41	Front drive bushing	71	Upper handle
12	Hieght Adjustment Rod Spring	42	Wave washer	72	Lever block
13	Height Adjustment Rod	43	Front drive assy.	73	Bolt
14	R type pin	44	V belt	74	Rope Guide
15	Self-locking nut	45	Self-propelled spring	75	Cap nut
16	Hex flange bolts	46	Belt limit lever	76	Quick fix knob
17	Left handle bracket	47	GT Transmission	77	Pin
18	Petrol engine	48	Ratchet pin	78	Quick knob lever
19	Outlet pipe	49	Rear drive bushing	79	Knob lever fix
20	Inlet pipe	50	Ratchet washer	80	Lower handle
21	"O" ring	51	Spring washer	81	Half round head square neck bolts
22	Cable Block	52	Ratchet Wheel L	82	Flat washer
23	Mulching plug	53	Rear drive fix plate R	83	3# triangle knob
24	Height Adjustment plate	54	Rear drive fix plate L	84	Hexagon nut
25	Left handle bracket	55	Ratchet Wheel R	85	Cable clip
26	Half round head square neck bolts	56	Outer cover of hub	86	5# triangle knob
27	Side discharge cover shaft	57	Wheel assy.	87	Brake cable
28	Side discharge cover spring	58	Inner cover of hub	88	Self-propelled cable
29	Side discharge cover	59	Rear drive assy.	89	Cable fix base
30	Side discharge chute	60	Height adjustment ball	90	Brake lever



Sturm!  
POWER • GAS • HAND • TOOLS

Sturm!  
POWER • GAS • HAND • TOOLS

Sturm!  
POWER • GAS • HAND • TOOLS

Sturm!  
POWER • GAS • HAND • TOOLS

Sturm!  
POWER • GAS • HAND • TOOLS

Sturm!  
POWER • GAS • HAND • TOOLS

Sturm!  
POWER • GAS • HAND • TOOLS

Sturm!  
POWER • GAS • HAND • TOOLS

# ENGINE FOR PL4614S

NO.	DESCRIPTION	NO.	DESCRIPTION	NO.	DESCRIPTION
1	Bolt	40	Fuel Tank Cap seal gasket	79	Respirator head gasket
2	Oil seal	41	fuel tank cap sponge	80	cylinder head cover I
3	crankcase cover	42	fuel tank cap	81	cylinder head cover II
4	Locating pin	43	The oil tank mount big washer	82	Bolt
5	Gasket	44	Tank damping rubber pad	83	And nuts
6	Rate-limiting gear shaft	45	fuel tank body	84	Valve adjustment nut
7	Rete-limiting gear assy.	46	Filtering Net Duct of Fuel	85	Rocker of Valve
8	Gasket	47	Fuel tank mounting bushing	86	valve rocker arm support bolts
9	Sliding Sleeve	48	fuel pipe lock clamp I	87	push rod director plate
10	rate-limiting gear shaft	49	The transparent cover	88	push rod
11	Bolt	50	pull starter assy.	89	locking bolt
12	Box combination gasket	51	The transparent cover	90	prime button II
13	pin	52	Hex flange nuts	91	Dual-head bolts
14	camshaft assy.	53	starter hub	92	Carburetor paper pad I
15	crankshaft assy.	54	fan	93	Air Inlet Pipe
16	connecting rod assy.	55	flywheel assy	94	Carburetor gasket
17	rolling bearing	56	Respirator Cover Plate Assy	95	Carburetor assy.
18	oil seal	57	Respirator head gasket	96	Carburetor paper pad II
19	Crankshaft box assy	58	Respirator valve plate	97	Piston Ring I
20	Bolt	59	oil filter net	98	Piston Ring II
21	Single-stage speed regulation guard	60	Hexagon head bolts	99	Guide Rail
22	Single-stage speed regulation control spring	61	Different-shaped double-head bolts II	100	Bushing Ring
23	Single-stage speed regulation assy.	62	Bolt	101	Piston
24	clip	63	wind shield	102	Piston Pin circlip
25	Hex flange nuts	64	Different-shaped double-head bolts I	103	piston pin
26	Speed rocker arm	65	ignition assy.	104	An air filter base.
27	bolt	66	flat Gasket	105	Vent groove cover plate
28	Throttle Valve Rod	67	Cylinder head gasket	106	Sponge filter
29	Throttle valve spring	68	spacing pin	107	Air Filter Upper Cover
30	R type pin	69	IntakeValve	108	Lubricating Gauge Assy
31	oil seal	70	Exhaust Valve	109	Bolt
32	rate-limiting rocker arm shaft	71	cylinder head assy.	110	Oil drain bolt
33	waste pipe	72	spark plug	111	Oil drain bolt gasket
34	detent assy.	73	Dual-head bolts	112	Muffler insulating pad
35	Bolt	74	oil seal assy	113	muffler assy.
36	main bracket of fuel tank	75	valve spring	114	muffler cover assy.
37	fuel pipe	76	Spring Coil of Intake Valve	115	Self-locking nut
38	fuel pipe lock clamp II	77	Spring Coil of Exhaust Valve		
39	connect cable of fuel cap	78	Top Cover of Exhaust Valve		