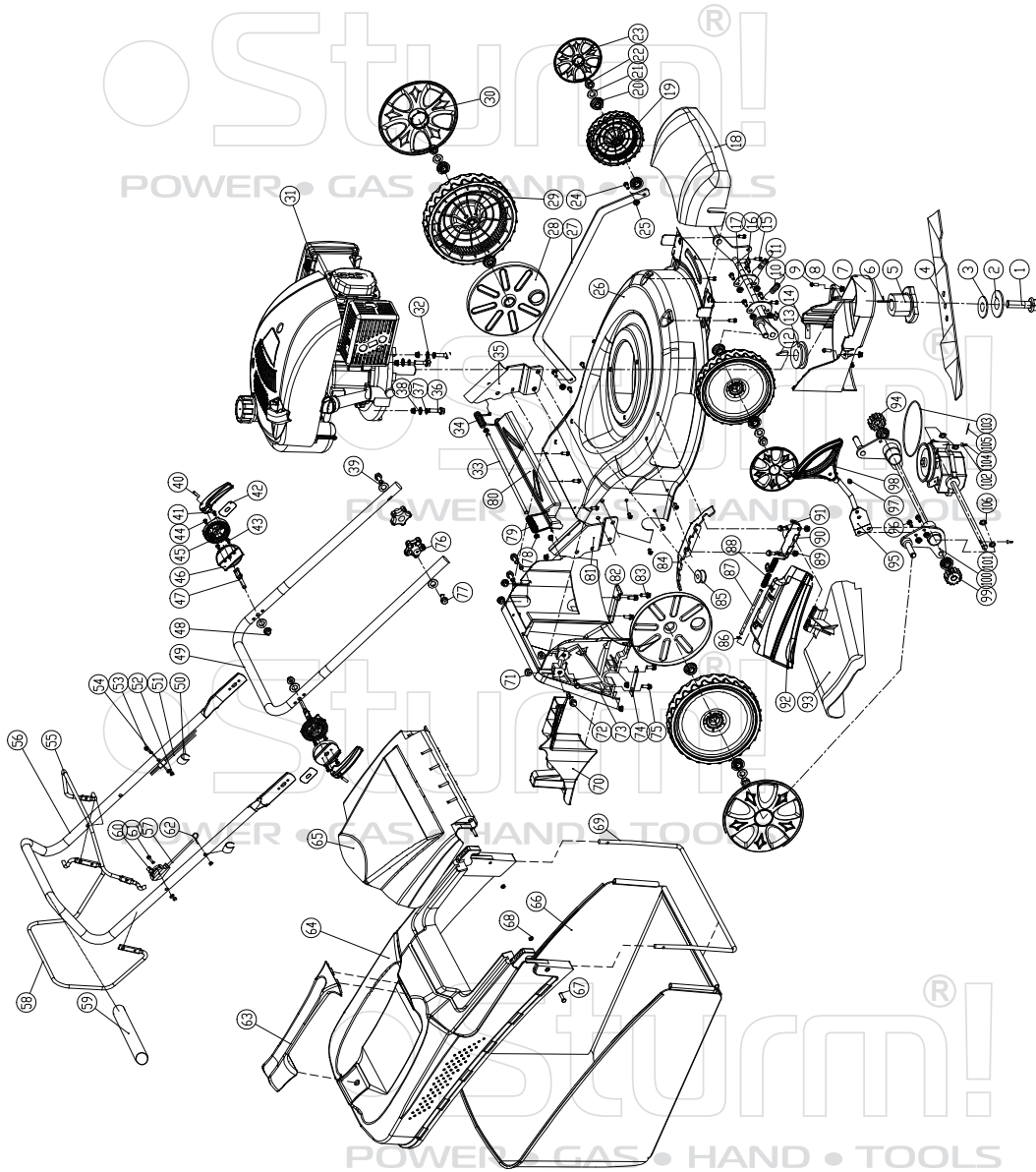


# PL5251S



NO.	DESCRIPTION	NO.	DESCRIPTION
1	BLADE BOLT	54	WASHER 6.4X12X1.4
2	FLAT WASHER	57	THROTTLE CONTROL CABLE
3	BLADE WASHER	55	BRAKE LEVER
4	BLADE	56	UPPER HANDLE
5	BLADE ADAPTER	58	COUPLING LEVER
6	KEY 4.75X5.5X35	59	RUBBER
7	BELT COVER	60	THROTTLE CONTROL
8	NUT M6	61	SCREW M6X45
9	SCREW M6X16	62	ROPE GUIDE SUPPORT
10	HEIGHT ADJUSTER SPRING	63	GRASS BOX HANDLE
11	FRONT AXLE	64	PLASTIC TOP
12	KEY 4X16	65	REAR DEFLECTOR
13	INITIATIVE PULLEY	66	GRASS BAG
14	SCREW M6X7	67	SCREW M5X25
15	SCREW ST4.8X16	68	NUTM5
16	HOLDFAST	69	FRAME
17	FRONT AXLE PRESS PLANK	70	MULCHING PLUG
18	FRONT PLASTIC CARTER	71	NUT M8
19	FRONT WHEEL	72	SCREW M8X20
20	BALL BEARING	73	PLASTIC AIR PATH
21	WASHER 13X20X0.6	74	REAR AXLE RIGHT PRESS PLANK
22	NUT M10	75	SCREW M6X18
23	FRONT WHEEL COVER	76	NUT
24	CUTTING HEIGHT ROD FIX SCREW	77	SCREW M8X45
25	NUT M6	78	CIRCLIP Ø6
26	DECK	79	REAR DEFLECTOR SPRING(RIGHT)
27	CUTTING HEIGHT ROD	80	DECK DECORATION BAR
28	INNER WHEEL	81	RIGHT HANDLE SUPPORT
29	REAR WHEEL	82	LEFT AXLE LEFT PRESS PLANK
30	REAR WHEEL COVER	83	SCREW M6X30
31	ENGINE	84	HEIGHT ADJUSTABLE TOOTH PLATE
32	SCREW M8X65	85	CABLE GUARD
33	REAR DEFLECTOR POLE	86	CIRCLIP Ø5
34	REAR DEFLECTOR SPRING(LEFT)	87	SIDE DEFLECTOR POLE
35	ARM BRACKET(LEFT)	88	SIDE DEFLECTOR SPRING
36	SCREW M8X45	89	NUT M6
37	SPRING WASHER 8.1X2.1	90	SIDE DISCHARGE SPPOINT
38	WASHER 8.4X24X2	91	SCREW M6X16
39	WASHER	92	SIDE DEFLECTOR
40	SQUARE WASHER	93	SIDE AIR PATH
41	FAST ADJUSTER HANDLE	94	LEFT GEAR ASSY
42	SCREW ST4.2X9	95	HEIGHT ADJUSTER
43	PIN 5X18	96	SCREW M6X16
44	SCREW ST4.2X16	97	SCREW M6X16
45	UPPER ADJUSTER COVER	98	CUTTING HEIGHT LEVER
46	LOWER ADJUSTER COVER	99	RIGHT GEAR ASSY
47	FAST SCREW	100	REAR AXLE
48	NUT M8	101	GEAR BOX
49	INFERIOR HANDLE	102	KEY
50	CLIP	103	BELT V Z750
51	BRAKE CABLE	104	SPRING
52	NUT M6	105	CABLE CIRCLIP
53	BOLT M6X35	106	CIRCLIP Ø12