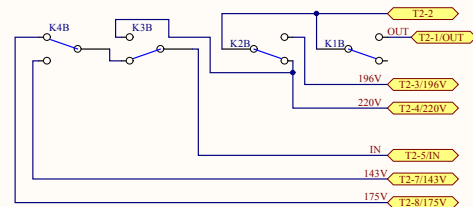
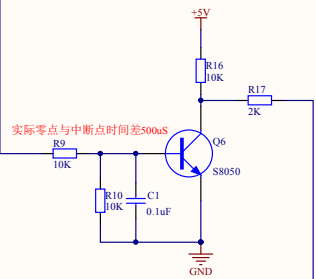
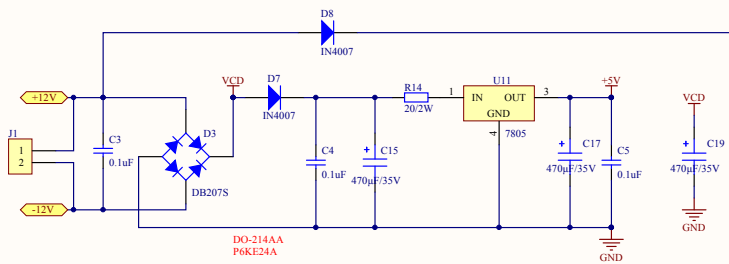


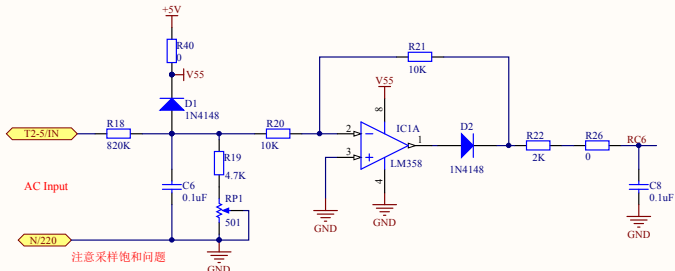
STA-2KW(140-260)原理图



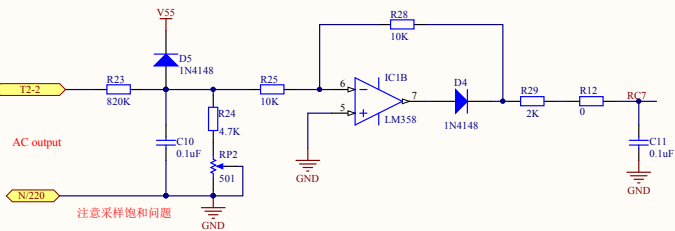
因为一上电输入就接到10的绕组

140--156 K4.K1吸合 -----230/152
 157--185 K4吸合 -----230/180
 186--205 K3.K4吸合 -----208/180
 206--237 K2.K4吸合 -----230/230
 238--260 K2.K3.K4吸合 -----208/230

零点检测电路

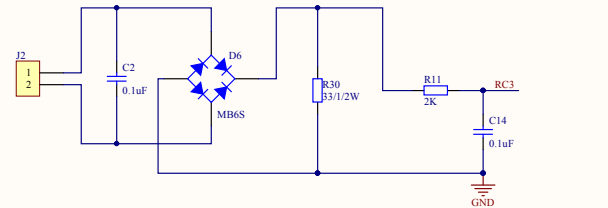


注意采样饱和问题

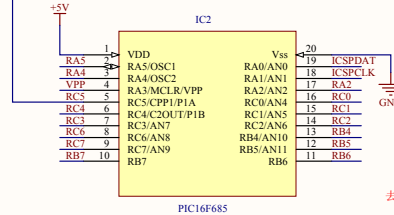


注意采样饱和问题

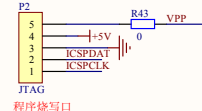
电压检测电路



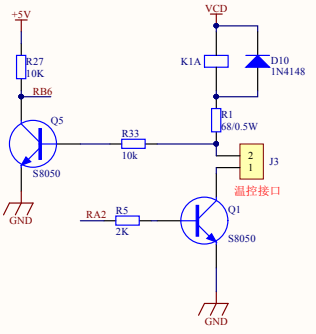
电流检测电路



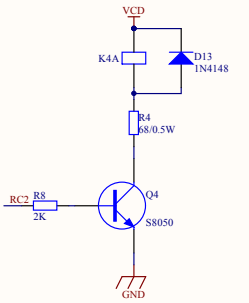
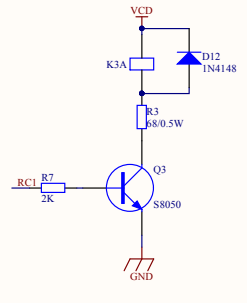
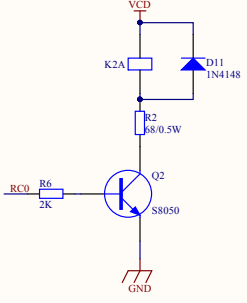
去耦电容：使单片机有稳定的工作环境



程序烧写口



温控接口



| | | |
|-------|----------------------------|-----------|
| Title | | |
| Size | Number | Revision |
| A4 | | |
| Date: | 2014/8/1 | Sheet of |
| File: | F:\技术资料\STA-1K-zero.SchDoc | Drawn By: |