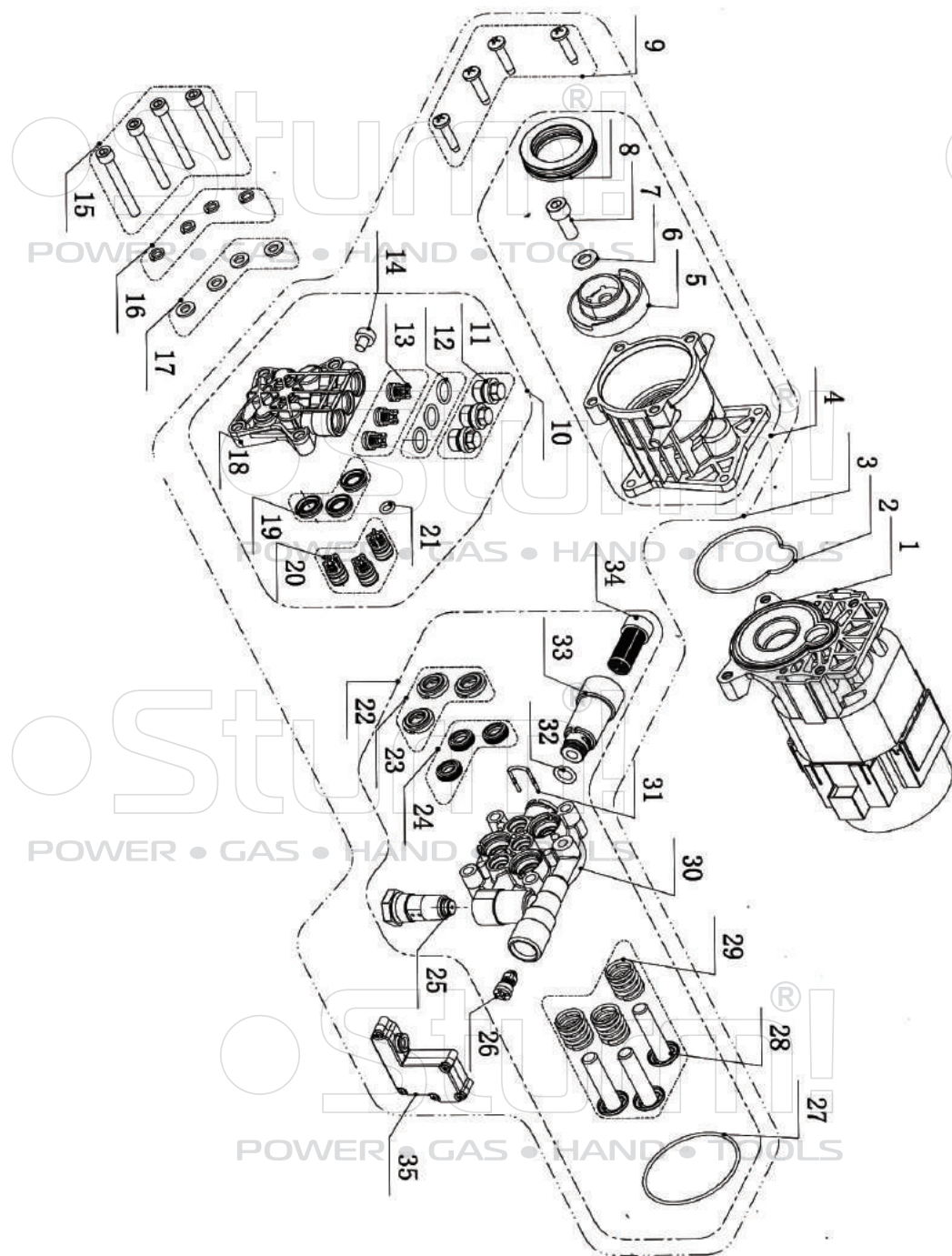


PW9215

NO.	DESCRIPTION	NO.	DESCRIPTION	NO.	DESCRIPTION
2	DUST CONTAINER HANDLE COVER	36	MIDDLE FRAME	73	SIPHON TUBE
3	DUST CONTAINER HANDLE	37	AIR TUBE COVER	74	TANK ONLY
4	DUST CONTAINER LOCK BRACKET	38	SCREW ST3.9*16	75	GUN HOLDER
5	DUST CONTAINER LOCK BUTTON	39	THREE POSITION SWITCH	76	POWER CORD ASSEMBLY (2 PIN EUROPE PLUG)
6	DUST CONTAINER LOCK SPRING	40	SWITCH COVER	77	SQUARE BRUSH
7	DUST CONTAINER COVER	41	CARD LINE BLOCK	78	SHOP-VAC ADAPTER
8	DUST CONTAINER AIR TUBE	42	AIR INLET BLOCK	79	GUN
9	DUST CONTAINER AIR TUBE SEAL	43	SWITCH COVER SEAL RING	80	LANCE
10	SPACED THREAD SCREW(SMALL HEAD)	46	FRONT STRAINER	81	MIDDLE LANCE
11	CROSS HEAD SELF-TAPPING SCREW	48	WATER INLET TUBE	82	SCREW
12	FLOATING BALL BLOCK	49	U-PIN	83	WATER INTLET THREAD CAP
13	FILTER BRACKET SEAL	50	MOTOR/PUMP WITHOUT WATER INLET TUBE	84	WATER OUTLET THREAD CAP
14	FLOATING BALL LEFT	51	MOTOR COVER BLOCK	85	PUMP OUTLET BLOCK
15	FLOATING BALL RIGHT	52	FAN COVER	86	WATER INLET FILTER
16	HEPA FILTER ASSEMBLE	53	FAN WATERPROOF PROTECTOR	88	CONNECTION TUBE
17	DUST CONTAINER	54	BACK MOTOR HOUSING FILTER	89	END CAP
18	TOP COVER ASSEMBLY	55	AIR OUT SUCKING POLE BASE	100	DUST CONTAINER ASSEMBLY
19	AIR TUBE SEAL RING	56	DRY AIR BLOCK	101	MIDDLE FRAME ASSEMBLY
20	AIR TUBE	57	PUMP FIXTURE	102	HANDLE ASSEMBLY
21	DUST CONTAINER AIR OUTLET WATER BLOCKING	58	PUMP FIX SHEATH	103	MOTOR/PUMP ASSEMBLY WITH COVER
22	SPACED THREAD SCREW(BIG HEAD)	59	BASE	104	MOTOR/PUMP ASSEMBLY
23	DUST CONTAINER SEAL RING	60	SPACED THREAD SCREW(BIG HEAD)	105	MOTOR/PUMP WITH WATER INLET TUBE
24	DUST CONTAINER AIR INLET SEAL RING	61	WHEEL ASSEMBLY		
25	TOP COVER	62	WHEEL		
27	MOTOR COVER SEAL RING	63	WHEEL COVER		
28	MOTOR HOUSING	65	HANDLE COVER RUBBLE COATING		
29	D28 MOTOR LOWER GLAND	66	HANDLE		
30	D28 MOTOR SEAL RING	67	SPACED THREAD SCREW(BIG HEAD)		
31	D28 MOTOR FOR DRY/WET USING	68	ST SCREW ST3.9X20		
32	MOTOR UPPER SEAL RING	69	SOFT TUBE ASSEMBLY		
33	D28 MOTOR UPPER GLAND	70	HOSE		
34	FAN COVER SEAL RING	71	DETERGENT TANK ASSEMBLY		
35	D28 MOTOR EXTENSION TUBE	72	TANK CONNECTOR		

ST-UK20180327



PUMP FOR PW9215

NO.	DESCRIPTION
1	INDUCTION MOTOR
2	PEACH SHAPE RING
3	PUMP ASSEMBLY
4	GEAR BOX ASSY
5	WOBBLE PLATE
6	WASHER
7	INNER HEXAGON SCREW
8	BEARING
9	ST SCREW
10	PUMP HEAD ASSEMBLY
11	CHECK VALVE NUT
12	O-RING
13	OULET VALVE KIT
14	SCREW
15	INNER HEXAGON SCREW
16	ELASTIC WASHER
17	WASHER
18	PUMP HEAD
19	WATER SEAL
20	INLET VALVE KIT
21	O-RING
22	PISTON BODY ASSEMBLY
23	SEALING BASE
24	PISTON OIL SEAL
25	BYPASSING VALVE KIT
26	TOTAL VAVE KIT
27	O-RING
28	PISTON ASSY
29	PISTON SPRING
30	PISTON GUIDE
31	U-PIN
32	O-RING
33	INLET PIPE
34	INLET FILTER
35	MICRO SWITCH ASSY

ST-UK20180327