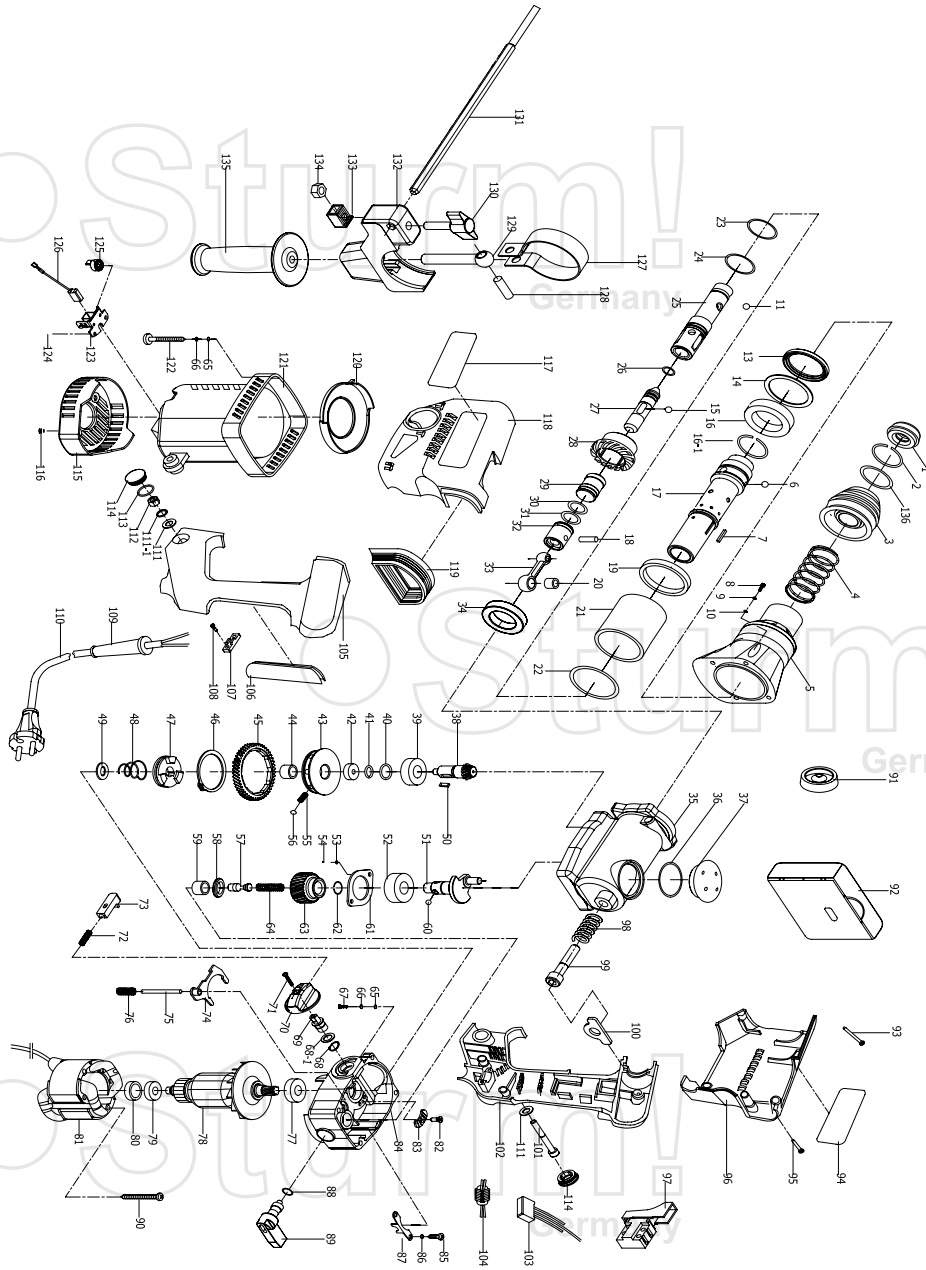


RH2510



NO.	DESCRIPTION	NO.	DESCRIPTION	NO.	DESCRIPTION
1	FRONT CAP	47	CLUTCH	92	BMC
2	STEEL RING	48	DISHING SPRING	93	TAP BOLT ST4.2X52
3	SLIDER	49	WASHER	94	BRAND LABEL
4	SPRING	50	FLAT PIN4X12	95	TAP BOLT ST4.2X20
5	CYLINDER CASE	51	CRANK SHAFT	96	RIGHT HOUSING
6	STEEL BALL Ø 7.94	52	BEARING6202	97	SWITCH
7	FLAT PIN3X18	53	SPRING WASHER Ø 4	98	DAMPING SPRING
8	BOLT M4X16	54	BOLT M4X16	99	DAMPING BOLT
9	SPRING WASHER Ø 4	55	SPRING	100	DAMPING WASHER
10	FLAT WASHER Ø 4	56	STEEL BALL Ø 5	101	BOLT M6X35
11	STEEL BALL Ø 7.14	57	LIFTING POLE	102	RIGHT HANDLE
13	OIL SEAL	58	ANTI-FRICTION RING	103	CAPACITANCE
14	BIG WASHER	59	NEEDLE BEARING HK1210	104	INDUCTANCE
15	STEEL BALL Ø 7.14	60	STEEL BALL Ø 5.5	105	LEFT HANDLE
16	BEARING 61907	61	BEARING CAP	106	GRIP BUFF
16-1	STEEL RING	62	RETAINER RING FOR SHAFT	107	CABLE CLAMP
17	CYLINDER	63	FIRST GEAR	108	TAP BOLT ST4.2X12
18	PISTON PIN	64	SPRING	109	CABLE SHEATH
19	RUBBER RING	65	FLAT WASHER Ø 5	110	CABLE
20	NEEDLE BEARING HK0810	66	SPRING WASHER Ø 5	111	WASHER
21	BUSHING	67	BOLT M5X20	111-1	SPRING WASHER Ø 6
22	O-RING	68	CIRCLIP FOR SHAFT Ø 11	112	NUT M6
23	WASHER	68-1	FLAT WASHER	113	O-RING
24	O-RING	69	KNOB HANDLE	114	BOLT CASE
25	GUARD RING SLEEVE	70	KNOB	115	BOTTOM COVER
26	O-RING	71	CROSS BOLT M4X8	116	TAP BOLT ST4.2X12
27	SECOND STRIKER	72	KNOB SPRING	117	BRAND LABEL
28	CONE GEAR	73	LOCKING BUTTON	118	LEFT HOUSING
29	RAM	74	PLECTRUM	119	DAMPING COVER
30	O-RING	75	PIN4X40	120	WIND GUARD
31	O-RING	76	SPRING	121	MOTOR CASING
32	PISTON	77	BEARING6001	122	BOLT M5X35
33	CONNECTING ROD	78	ROTOR	123	BRUSH HOLDER
34	OILY BEARING	79	BEARING608	124	TAP BOLT ST4.2X8
35	CRANK CASE	80	BEARING BUSHING	125	WHORL SPRING
36	O-RING	81	STATOR	126	BRUSH
37	OIL CAP	82	SUNK BOLT M4X8	127	CHUCK RING
38	SMALL CONE GEAR	83	THRUST PLAN	128	ELASTIC COLUMN PIN
39	BEARING 6002	84	GEAR CASE	129	SLIPKNOT BOLT
40	WASHER	85	CROSS BOLT M4X8	130	PLASTIC CARRYING BOLT
41	CIRCLIP FOR SHAFT Ø 12	86	SPRING WASHER Ø 4	131	DEPTH GAUGE
42	BEARING 627	87	LOCK PLATE	132	HANDLE CLIP
43	WHEEL CORE	88	O-RING	133	DEPTH GAUGE LOCKER
44	NEEDLE BEARING HK1210	89	SWITCH GRIP	134	NUT M6
45	SECOND GEAR	90	TAP BOLT ST4.8X60	135	SIDE HANDLE
46	CIRCLIP FOR SHAFT Ø 52	91	DUST CAP	136	WASHER